

MOUNTING INSTRUCTIONS



A-12096

REAR WIPER KIT

FOR JDX MY14 COZY CABS A-12098

Before you begin, read these instructions and identify all components. Please retain these instructions for future reference and parts ordering information.

Note: Cab should be installed prior to installing this kit. Refer to kit components and Figure 1 for general layout.

Kit Components:	ITEM	QTY	PART No.	DESCRIPTION
	1	2	3-10083	WASHER, No.10
	2	1	3-10308	NUT, NYLOCK, No.10-24NC
	3	1	3-10645	WASHER, RUBBER, .25"
	4	1	3-15577	WIPER MOTOR COVER
	5	1	3-18189	ROCKER SWITCH, BODY
	6	1	3-18606	ROCKER SWITCH ACTUATOR
	7	1	3-18672	FUSE, BLADE TYPE, 5 AMP
	8	1	3-18703	BOLT, No.10-24NC x 1.00" LONG, BUTTON HEAD
	9	1	3-18955	WIPER MOTOR, Y TYPE, 12V, 110 DEG
	10	1	3-19686	WIRE HARNESS, JUMPER, FB TO SW
	12	1	3-20567	WIPER BLADE, 10 INCH
	13	1	3-20350	WIPER ARM, ADJ 10-13
	14	1	3-20390	SPACER, NYLON
	15	1	3-20445	WIRE HARNESS, REAR WIPER
	16	1	05-11551	MOUNTING INSTRUCTIONS

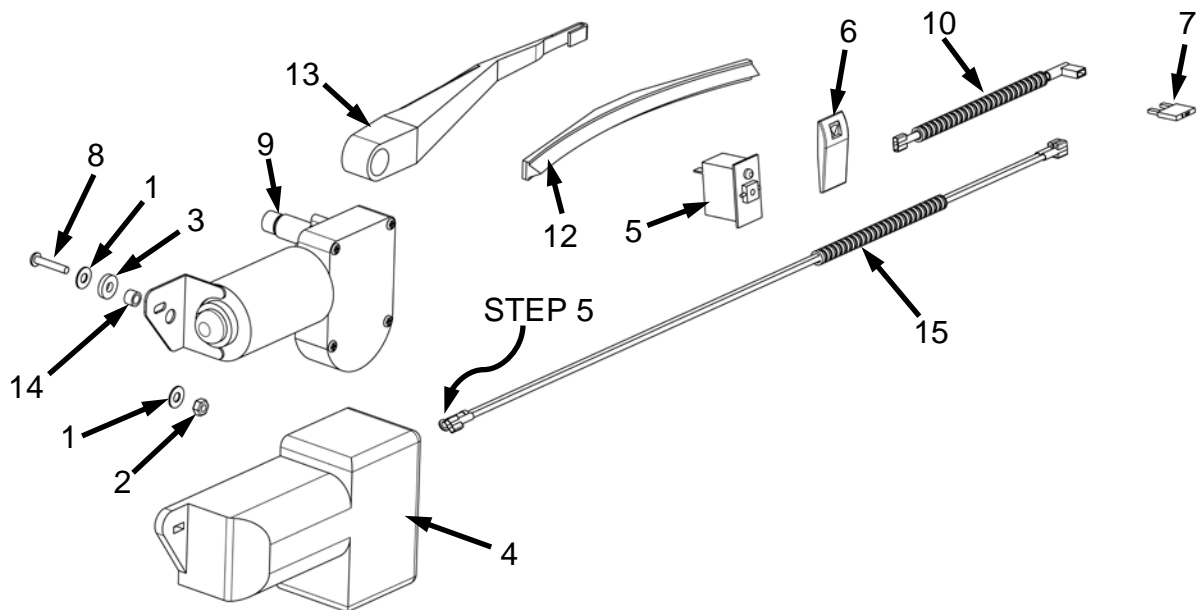


Figure 1
(General Layout)

MOUNTING INSTRUCTIONS

Installing rear wiper;

1. Remove hole plugs from upper rear window. Remove fuse block cover panel.
2. From inside of cab, place wiper motor cover (4) against inside surface of rear window.
3. Install wiper motor (9) into wiper motor cover (4) and secure to window using rubber washer, ring collar and nut, supplied with wiper motor (**Figure 2**).
4. Secure tab end of wiper motor(9) to glass using (**Figure 2**);
 - (1) No. 10-24NC x 1.00 long bolt (8)
 - (2) No. 10 Flat washer (1)
 - (1) Rubber washer (3)
 - (1) Spacer (14)
 - (1) No. 10-24NC, Nylock nut (2)
5. Locate terminal eye on the black wire of wiper harness (15). Connect terminal eye to wiper motor by removing one of the bolts on the wiper motor cover and reinstalling it with the terminal eye (**Figures 3 & 4**).
6. Install wiper arm (13) onto wiper motor shaft.
7. Install wiper blade (12) onto wiper arm (13).
8. Select an empty rocker switch location on switch panel. Remove knockout.
9. Install rocker switch body (5) into knockout hole.
10. Install rocker switch actuator (6) onto rocker switch (5).
11. Connect wire jumper (10) from either terminal on rocker switch (5) to an empty fuse block terminal location.
12. Connect remaining end of black wire of wire harness (15) to ground bar on fuse block.
13. Connect green wire of wire harness (15) from wiper motor terminal to remaining rocker terminal on switch (5) (**Figure 4**).
14. Install 5 amp fuse into empty fuse block location selected in step 10.
15. Turn on tractor ignition key. Toggle wiper switch on and off to check wiper operation. Adjust wiper arm, if needed.
16. Install wiper motor cover.
17. Re-install fuse block cover panel.



Figure 2

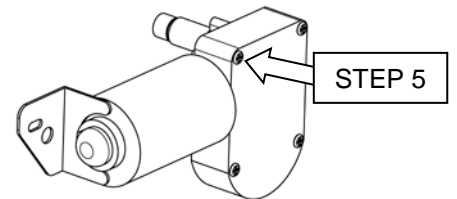


Figure 3

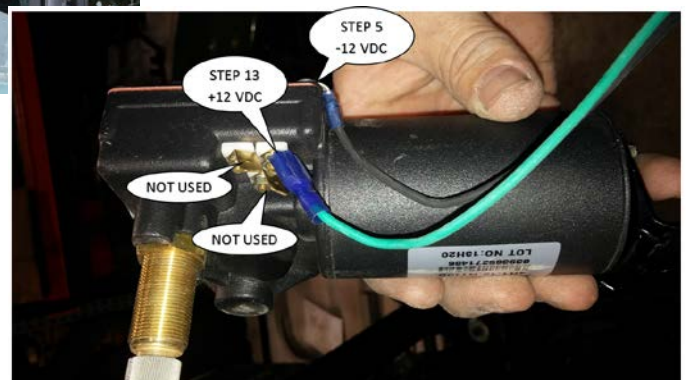


Figure 4

 **CUSTOM PRODUCTS** ©2014
OF LITCHFIELD, INC.
PO BOX 70, 1715 S. Sibley Avenue, Litchfield, MN 55355-0070
Ph: (320) 693-3221 Fax: (320) 693-7252
www.800cabline.com

05-11551
October 5, 2016