



A-11864 LIGHT KIT, 12VDC

Note: This kit requires a minimum current draw of 9 amps at 12 VDC. Do not exceed the machine's available alternator capacity. If you do not know how much current is available, contact your dealer or manufacturer of this machine, prior to installing this kit.

Before you begin, read these instructions and identify components. Please retain these instructions for future reference and parts ordering information.

Lights are to be mounted on front of cab. This kit is for the X Series cab A-11762 and 20 Series cab A-11858, which includes a main feed breaker and relay wire harness and 6-slot fuse block, already installed in the headliner from the factory.

Kit Components: (Figure 3)

ITEM	QTY	PART NO.	DESCRIPTION
1	2	1-47300	LIGHT MOUNT BRACKET, X SERIES
2	2	3-18315	LIGHT, FLOOD BEAM, 55 WATT HALOGEN
3	4	3-19340	5/16 X 3/4" LONG, BUTTON HEAD BOLT
4	4	3-17111	5/16" FLANGE NUT
5	1	3-18189	ROCKER SWITCH BODY
6	1	3-18514	ROCKER SWITCH ACTUATOR, LIGHT IMPRINT
7	1	3-19593	WIRE HARNESS, LIGHTS
8	1	3-16057	FUSE, 10 AMP ATO/ATC BLADE TYPE
9	4	3-19594	CABLE TIE WITH RETAINER FOR 1/4" HOLE
10	4	3-16629	NYLON TIE, 7.50" BLACK
12	1	05-11129	MOUNTING INSTRUCTIONS, A-11864
15	2	1-48797	LIGHT MOUNT BRACKET, 20 SERIES

Installation Steps:

1. Remove the (4) 5/16" button head bolts that secure the headliner to the cab frame.
2. Remove front roof bolts and block up roof 2-3"
3. Using a wire crimping tool, connect wire harness ends labeled lights to each light wires. Crimp black wire to black wire on light and the brown wire to red wire on light.
4. Secure each light to light mount bracket using hardware supplied with light kit (**Figure 1**). Use light mount 1-47300 for X series and 1-48797 for the 20 series. On 20 series the light is mounted to the bottom of the bracket.
5. If mirrors are present, remove bracket mounting bolts (**Figure 1**).
6. Secure each light to cab (If mirrors are present, secure each light with mirror brackets using the same holes) using (**Figure 1**);
 - (2) 5/16 x 3/4" long button head bolts
 - (2) 5/16" flange nuts
7. Route wire harness from each light to headliner area.
8. Re-install front roof bolts.
9. Select an empty location in headliner for front lights rocker switch and remove rectangular knockout.
10. Connect switch end of wire harness to rocker switch. Run switch end of wire harness through switch knockout. Refer to labels on harness and refer to Figure 2 for correct wire connections.
11. Remove fuse block access cover from headliner and select an empty fuse terminal location.
12. Connect **brown** wire of harness labeled +12VDC Lights to the empty fuse block terminal.
13. Connect **black** wire of harness labeled -12VDC Lights to 1/4" ground terminal of fuse block.
14. Attach switch actuator to rocker switch then install switch into knockout.
15. Install 10 amp fuse into fuse block location selected in Step 11.

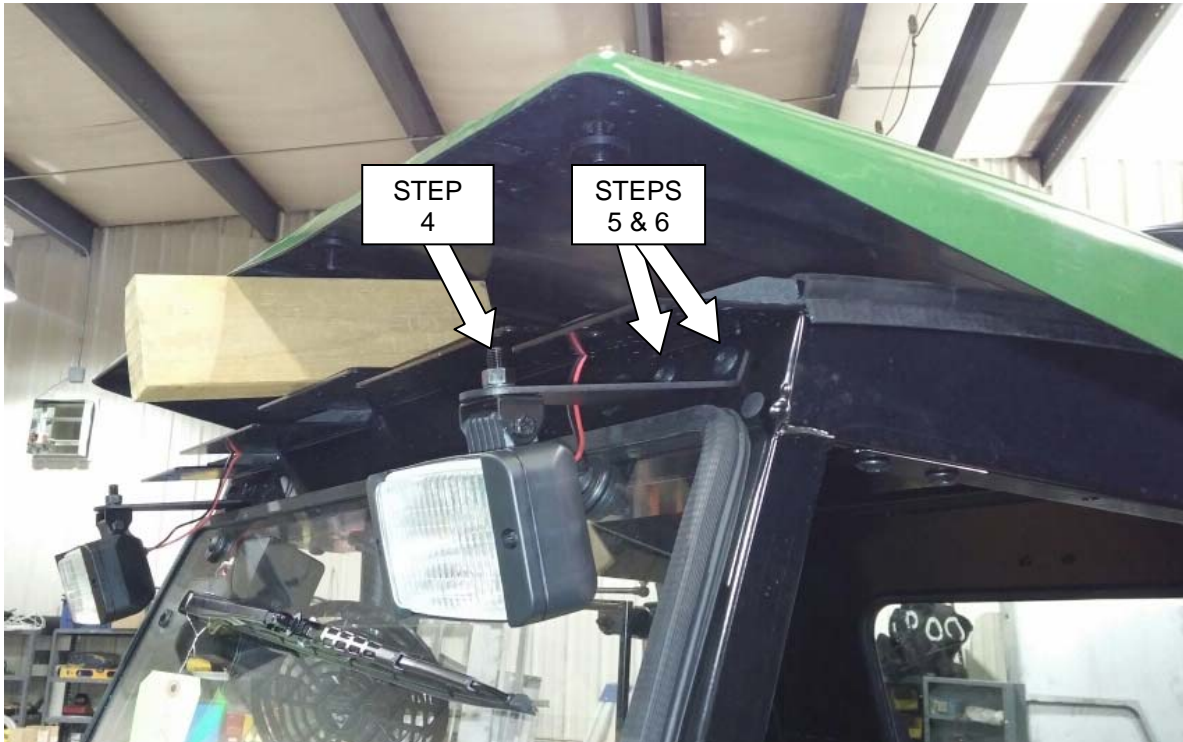
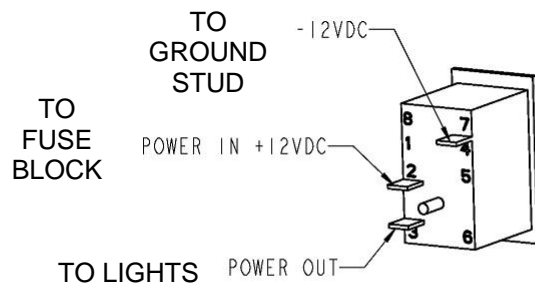


Figure 1
(Bracket 1-48797 Shown)



ROCKER SWITCH 3-18189
20A MAX AT 12VDC
TYPICAL SWITCH WIRING

Figure 2

Completing installation:

16. Turn tractor's ignition key to "On".
17. Turn lights on and off to check proper operation. Check coverage area and adjust lights if needed.
18. Secure loose wires by using wire loom and nylon ties.
19. Secure headliner to cab frame and fuse block access cover to headliner.

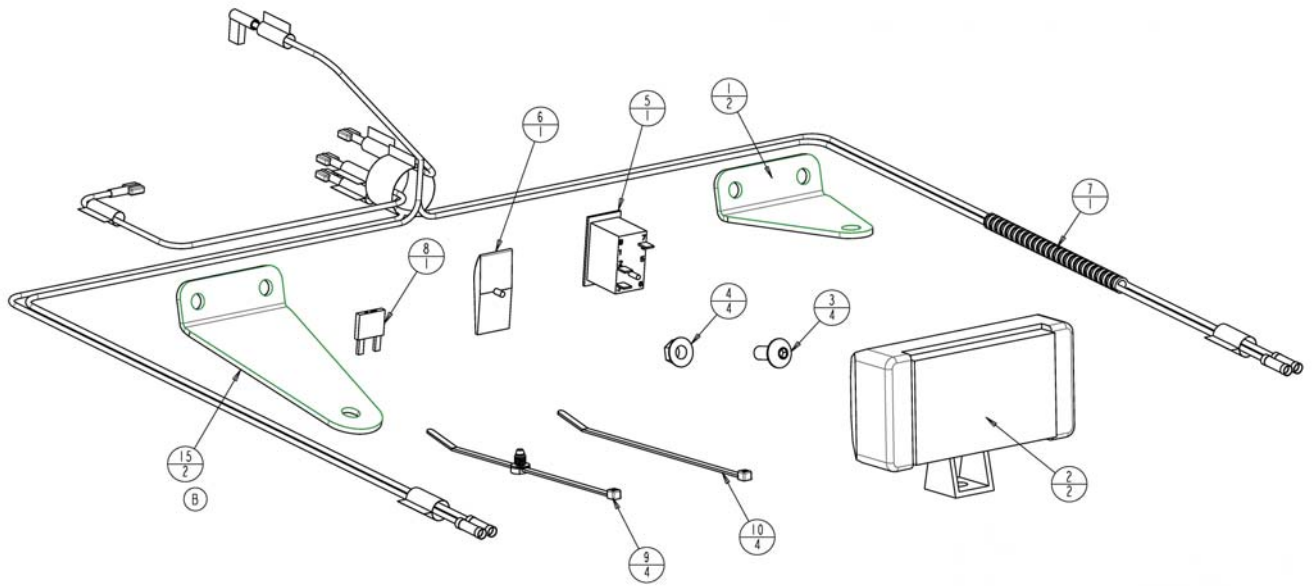


Figure 3

Manufactured by:



BOX 70 • LITCHFIELD, MINNESOTA 55355-0070

(320) 693-3221 Fax: (320) 693-7252

www.800cabline.com

05-11129
October 6, 2014