

# INSTALLATION INSTRUCTIONS

## A-11838 Wiper Kit



This wiper kit fits Toro 5800 Multi-Pro Sprayer Cabs A-11836, model years 2010 and newer.

**Preparation of machine;**

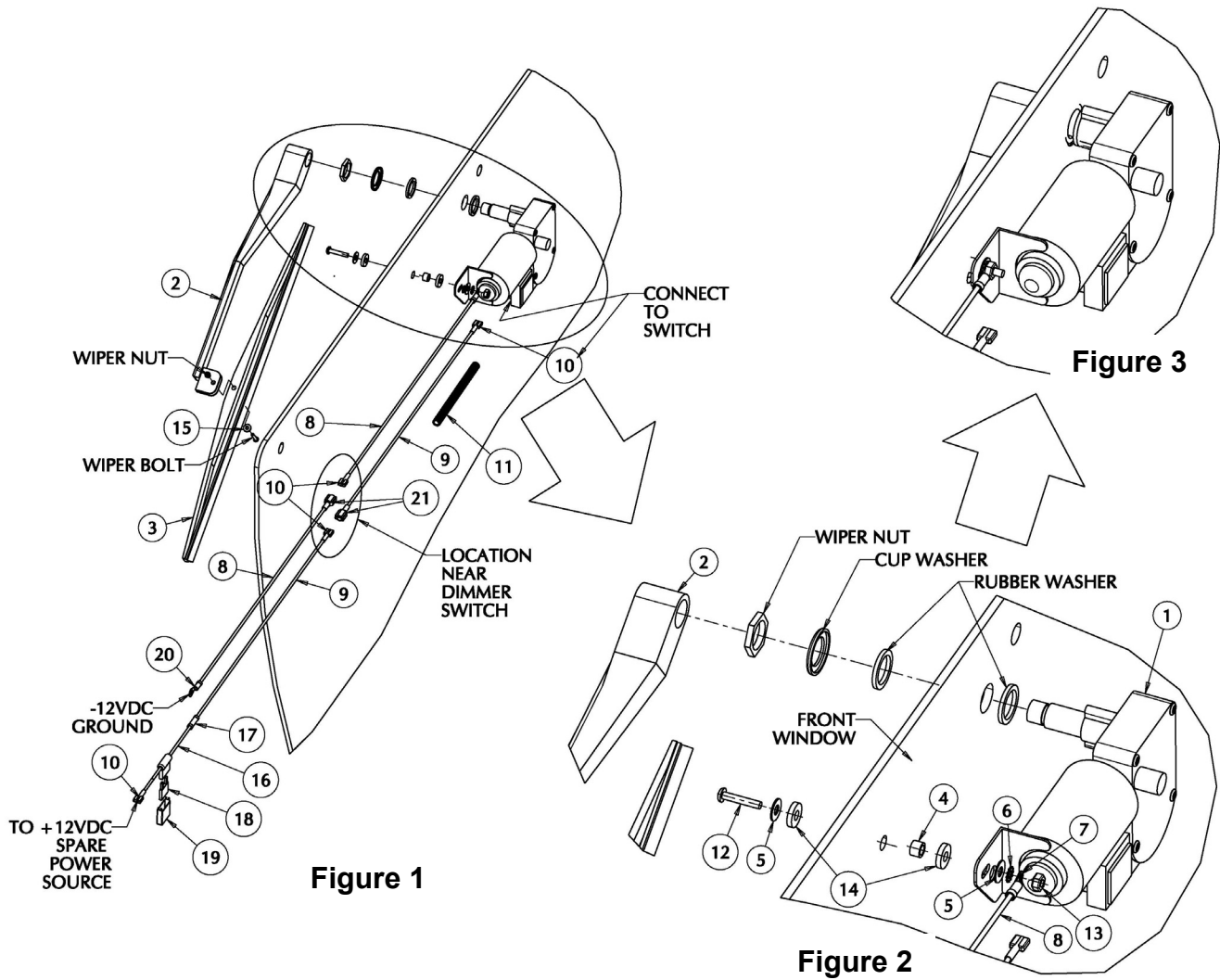
1. Position vehicle on a clean level surface, stop engine, engage parking brake and remove key from ignition switch.
2. If Cab or Sunshade front window kit is not installed, do so prior to installing this kit.
3. Unpack and identify components (**Figure 1**).

Parts list;

ITEM	QTY	DESCRIPTION	CP P/N
1	1	WIPER MOTOR, Y TYPE 12VDC, 1" SHAFT W/ SW	3-18708
2	1	WIPER ARM, 10-15 ADJUSTABLE	3-15079
3	1	WIPER BLADE, 18"	3-15566
4	1	SPACER TUBE	1-22030
5	2	No. 10 FLAT WASHER	3-10083
6	1	No. 10 LOCK WASHER, STAR EXT TOOTH	3-13083
7	1	TERMINAL CONNECTOR, 14GA No.10 EYE	3-11433
8	1	WIRE, BLACK 14 GA, 16FT LONG	3-10345
9	1	WIRE, GREEN 14 GA, 16FT LONG	3-10367
10	4	TERMINAL CONNECTOR, 14GA BLADE 1/4" FEMALE	3-10073
11	1	WIRE DUCT, .350" X 15 FT LONG	3-10704
12	1	No. 10 x 1.00" LONG, BUTTON HD BOLT	3-18703
13	1	No. 10 NYLOCK NUT	3-10308
14	2	1/4" WASHER, RUBBER	3-10645
15	1	No. 6 FLAT WASHER	3-18322
16	1	FUSE HOLDER, ATO/ATC TYPE	3-18231
17	1	BUTT SPLICE, 14 GA	3-10672
18	1	FUSE, 5 AMP ATO/ATC BLADE TYPE	3-18672
19	1	FUSE HOLDER COVER	3-18519
20	1	TERMINAL CONNECTOR, 14 GA x 1/4" EYE	3-11434
21	2	TERMINAL CONNECTOR, 14 GA X 1/4" BLADE MALE	3-16074
22	8	NYLON CABLE TIE	3-16629
23	8	CABLE TIE MOUNT PAD	3-17517

# INSTALLATION INSTRUCTIONS

## A-11838 Wiper Kit



**Wiper Kit Installation without headliner (Wire crimping tool required);**

1. Attach female blade connector (Item 10) to one end of green wire (Item 9) (**Figure 1**).
2. Connect green wire with female blade connector to empty wiper motor blade terminal (**Figure 1**).
3. Remove (1) 7/8" and 3/8" hole plugs located at the top center of the windshield.
4. Install the wiper motor into front window and secure the threaded shaft of the wiper motor using hardware supplied with wiper motor (**Figure 2**).
5. Attach No. 10 terminal ring connector (Item 7) to one end of black wire (Item 8) (**Figure 2**).
6. Secure black wire with No. 10 terminal eye to the slotted end of the wiper motor to window using;
  - (1) No. 10 x 1" long button head bolt (Item 12)
  - (2) No. 10 flat washer (Item 5)
  - (1) No. 10 external tooth lock washer (Item 6)
  - (1) No. 10 nylock nut (Item 13)
  - (2) 1/4" rubber washers (Item 14)
  - (1) Spacer tube (Item 4)**(See figures 1, 2 & 3)**
7. Route green and black wires **down the LH front cab side frame tube**, near the dimmer switch and to the dash panel location of machine. A splice may be installed using male and female terminal connectors at the dimmer switch location for easy cab removal disconnect.
8. Cover wires using wire duct (Item 11).

## INSTALLATION INSTRUCTIONS

### A-11838 Wiper Kit

9. Attach 1/4" terminal ring (Item 20) to remaining end of black wire. Black wire may need to be shortened depending on model year. Secure to -12V terminal ground location.
10. Connect fuse link (Item 16) to remaining end of green wire using the blue butt splice connector (Item 17). Green wire may also need to be shortened depending on tractor models and brands (**Figure 1**).
11. Attach 1/4" female blade terminal connector (Item 10) to remaining end of fuse link wire. Secure to a spare +12V power source located near fuse block.
12. Install 5 amp fuse (Item 18) into fuse holder and attach fuse cover (Item 19) to fuse holder.
13. Secure the wiper blade (Item 3) onto the wiper arm (Item 2) using No. 6 hardware supplied with arm and the additional No.6 flat washer (Item 15) supplied with kit (**Figure 1**).
14. Located the rocker switch on the wiper motor. Turn switch on and off. The wiper motor will run for a period of time and then stop by itself. This will be the parked position. Note: coverage angle of shaft so that wiper arm is installed on correct side.
15. Install the wiper arm with blade onto the wiper motor shaft.
16. Adjust the arm length, if required.
17. Turn wiper switch on and off. Check coverage area and adjust if needed.
18. Secure loose wires using nylon ties and tie mount pads.

Installation is now complete. For questions or comments, contact;



PO BOX 70, 1715 S. Sibley Avenue, Litchfield, MN 55355-0070  
Ph: (320) 693-3221 Fax: (320) 693-7252  
Website: [www.800cabline.com](http://www.800cabline.com)