

# INSTALLATION INSTRUCTIONS

## A-11836 Cab with Doors Kit



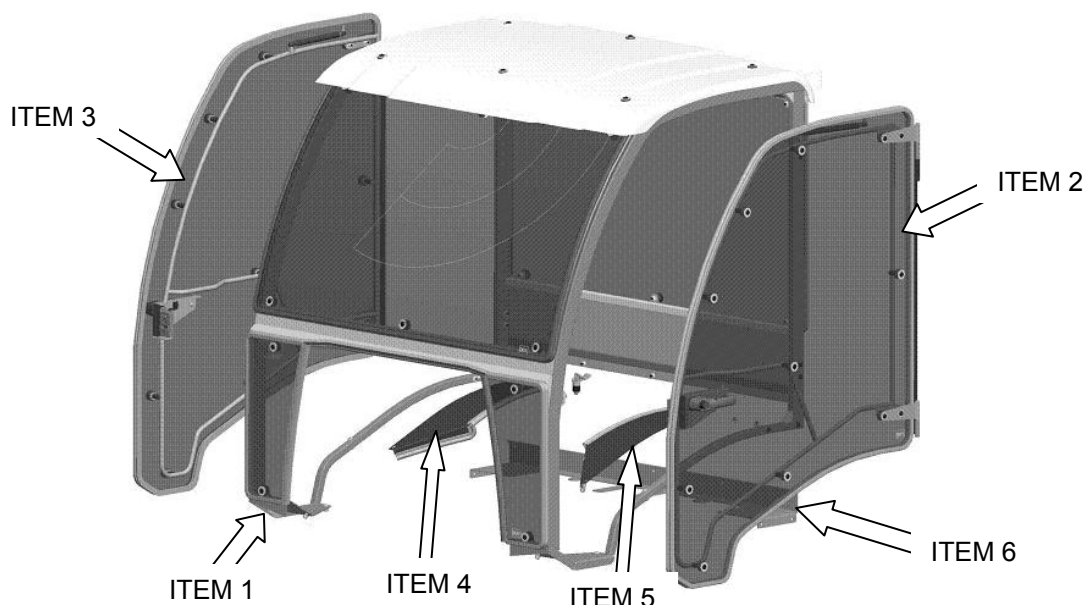
### Vehicle set up instructions;

This cab is designed to be used on model year 2010 and newer, Multi-Pro 5800 Sprayer Vehicles equipped with a ROPS. **Replacement of standard front leaf springs with heavy duty leaf springs (Purchased separately from The Toro Company, part number 99-0569), is required for use with this cab. Contact your Toro Dealer to purchase (2) heavy duty leaf springs.**

### Preparation of machine;

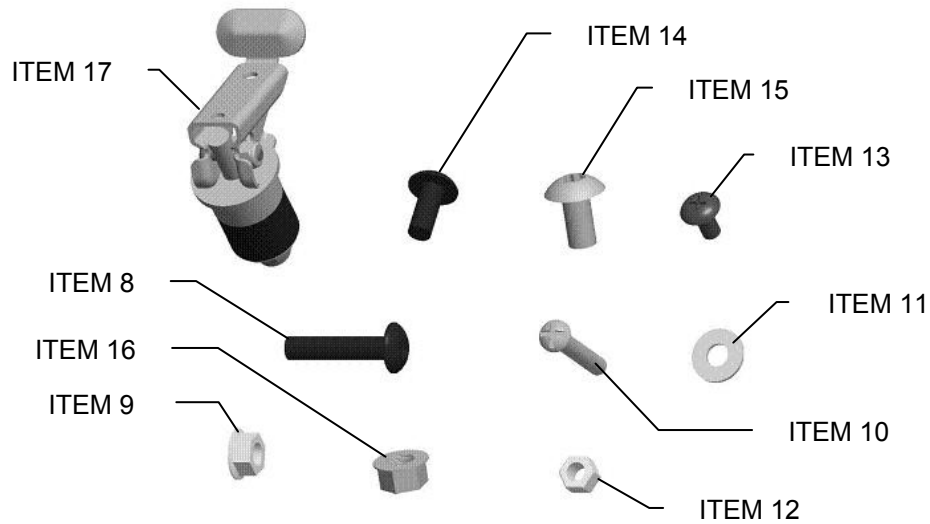
1. Position vehicle on a clean level surface, stop engine, engage parking brake and remove key from ignition switch.
2. Disconnect positive cable from battery.
3. Remove crating from cab and open mounting kit box. Layout parts for identification. See Figures 1 and 2.

| Parts list; | ITEM | QTY | DESCRIPTION                                 | CP PART NUMBER |
|-------------|------|-----|---|----------------|
|             | 1    | 1   | CAB SHELL ASSEMBLY                          | 4-15538        |
|             | 2    | 1   | DOOR ASSEMBLY LH                            | 4-15536        |
|             | 3    | 1   | DOOR ASSEMBLY RH                            | 4-15537        |
|             | 4    | 1   | FENDER PANEL ASSEMBLY LH                    | 4-15568        |
|             | 5    | 1   | FENDER PANEL ASSEMBLY RH                    | 4-15569        |
|             | 6    | 1   | REAR MOUNT PANEL                            | 1-47035        |
|             | 7    | 1   | MOUNTING KIT CONSISTS OF;                   | 4-15539        |
|             | 8    | 4   | 5/16" X 1.50" LONG, BUTTON HEAD SCREW       | 3-19342        |
|             | 9    | 9   | 5/16" FLANGE NUT                            | 3-17111        |
|             | 10   | 2   | 1/4" X 1.50" LONG, ROUND HEAD SCREW         | 3-10101        |
|             | 11   | 4   | 1/4" FLAT WASHER                            | 3-10084        |
|             | 12   | 4   | 1/4" NYLOCK NUT                             | 3-10070        |
|             | 13   | 4   | 1/4" X 1/2" LONG, PHILLIPS TRUSS HEAD SCREW | 3-17057        |
|             | 14   | 5   | 5/16" X 3/4" LONG, TRUSS HEAD SCREW         | 3-19340        |
|             | 15   | 4   | 3/8" X 3/4" LONG, TRUSS HEAD SCREW          | 3-17805        |
|             | 16   | 4   | 3/8" FLANGE NUT                             | 3-17622        |



**Figure 1**

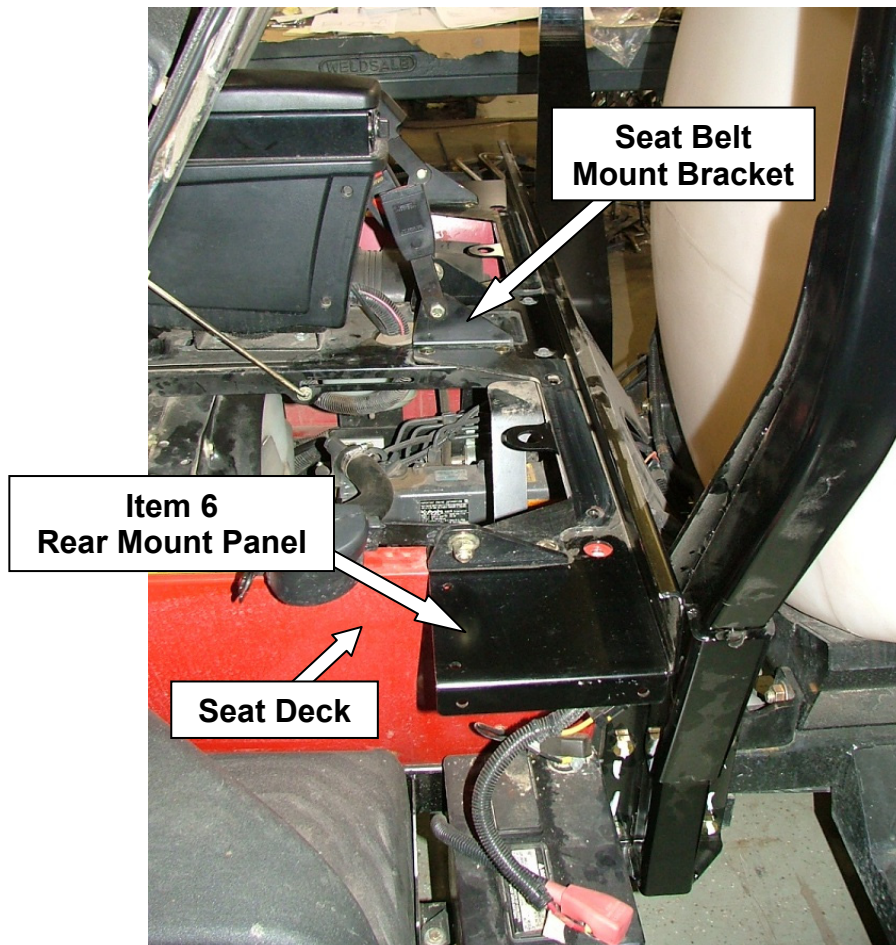
## INSTALLATION INSTRUCTIONS A-11836 Cab with Doors Kit



**FIGURE 2**  
**(Hardware Kit 4-15539)**

### Installation of Rear Mount Plate;

4. Tip up both seats forward and remove seatbelt mount brackets.
5. Place rear mount panel (Item 6) onto seat deck and re-install seatbelt mount brackets reusing hardware (Figure 3).



**Figure 3**

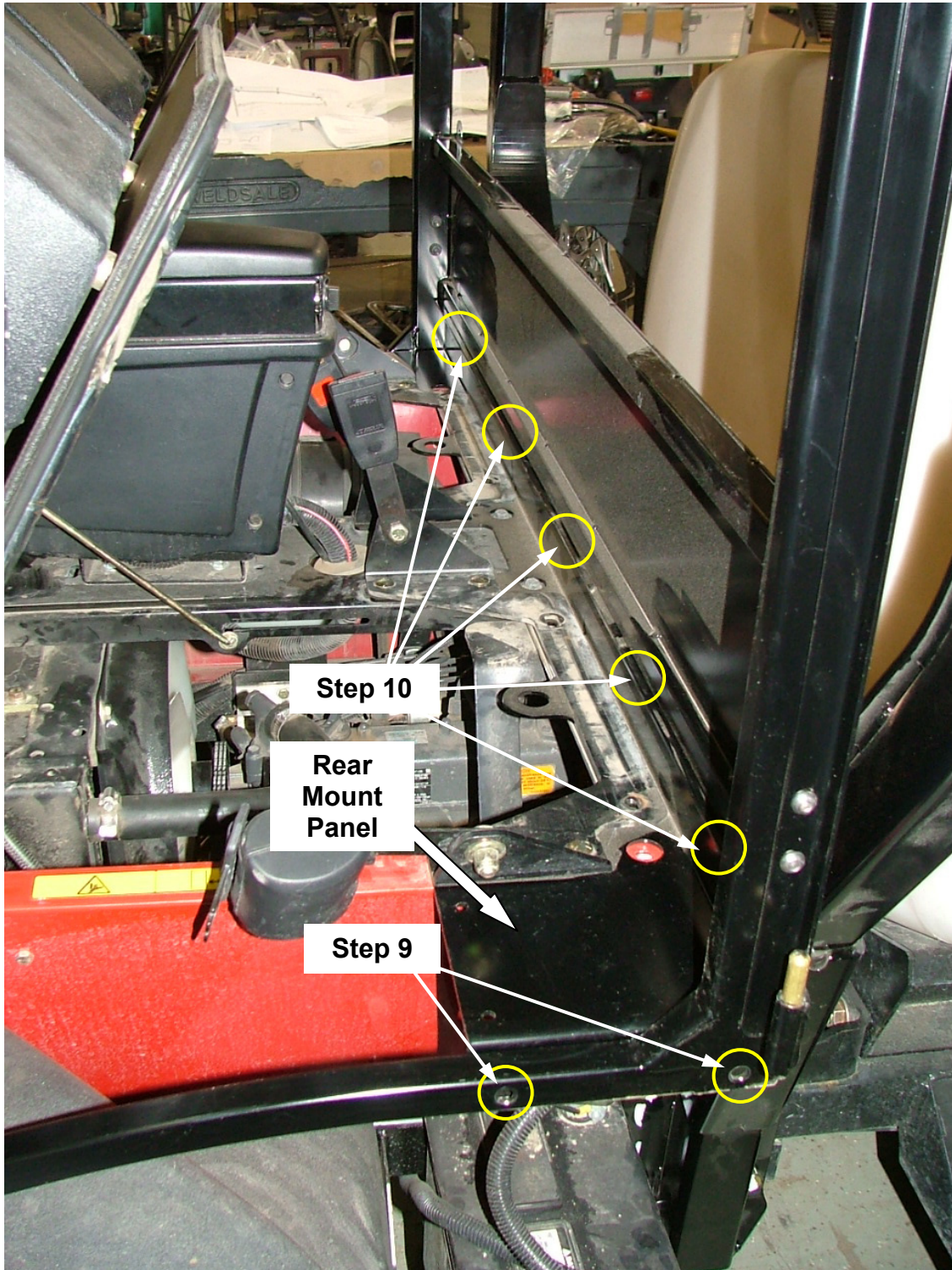


## INSTALLATION INSTRUCTIONS

### A-11836 Cab with Doors Kit

#### Installation of Cab;

6. Open cab doors and disconnect gas spring. Remove doors from cab by pulling the door upward, off the hinge pins. Carefully set doors aside.
7. Lift cab up using a strap and hoist. Remove shipping pallet from cab.
8. Place cab onto machine by aligning the rear mount plate holes with the rear cab tube connection holes and the front of cab around the hood (**Figure 4**).



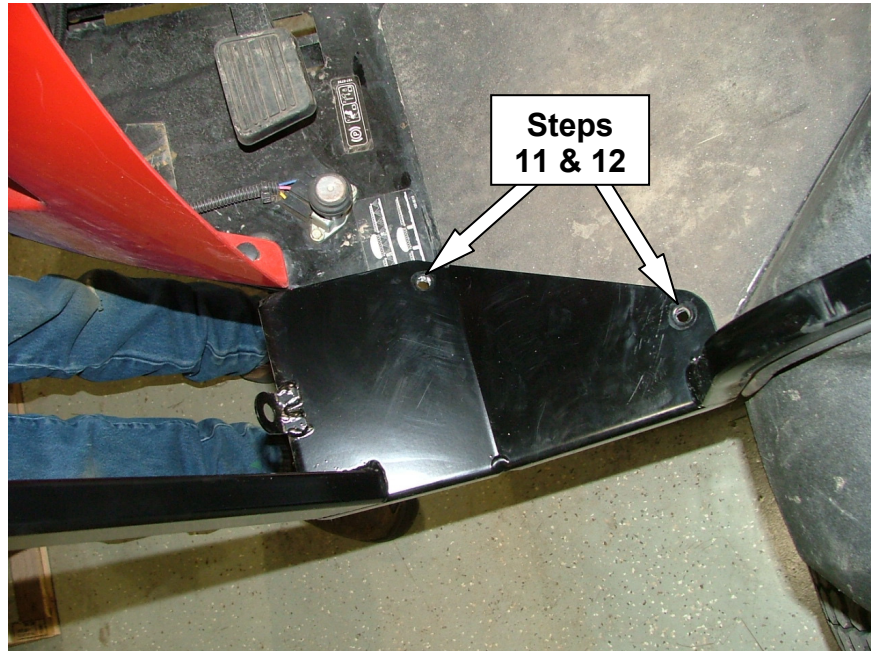
**Figure 4**



## INSTALLATION INSTRUCTIONS

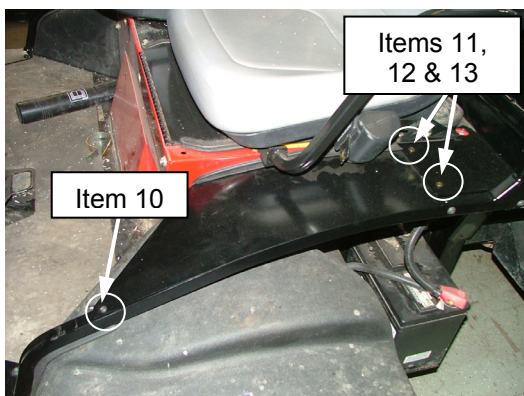
### A-11836 Cab with Doors Kit

9. Secure each rear-side frame of cab to rear mount plate using **(Figure 4)**;  
(4) 5/16" x 1.50" long button head screws (Item 8)  
(4) 5/16" flange nuts (Item 9).
10. Secure rear of cab to rear mount plate using **(Figure 4)**;  
(5) 5/16" x 3/4" long button head screws (Item 14)  
(5) 5/16" flange nuts (Item 9).
11. Using a 3/8" drill bit, transfer-drill (4) 3/8" holes into the foot deck platform **(Figure 5)**.
12. Secure the front of the cab to the foot deck using;  
(4) 3/8" x 3/4" long button head screws (Item 15)  
(4) 3/8" nylock nuts (Item 16)

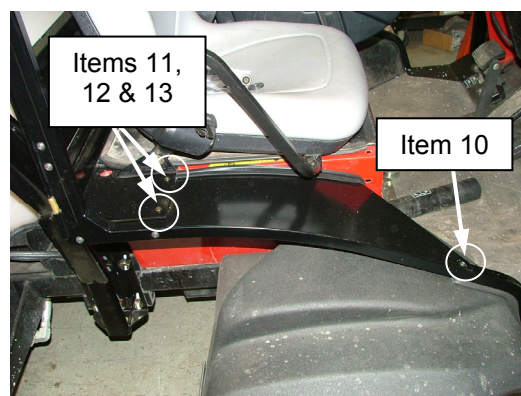


**Figure 5**

13. Install LH fender panel assembly (Item 4) to LH cab side frame **(Figure 6)**. Secure using;  
(1) 1/4" x 1-1/2" button head screw (Item 10)  
(2) 1/4" flat washer (Item 11)  
(2) 1/4" nylock nut (Item 12)  
(2) 1/4" x 1/2" long, Phillips truss head bolt (Item 13)
14. Repeat step 13 for RH fender panel assembly onto RH cab side frame **(Figure 7)**.



**Figure 6**



**Figure 7**

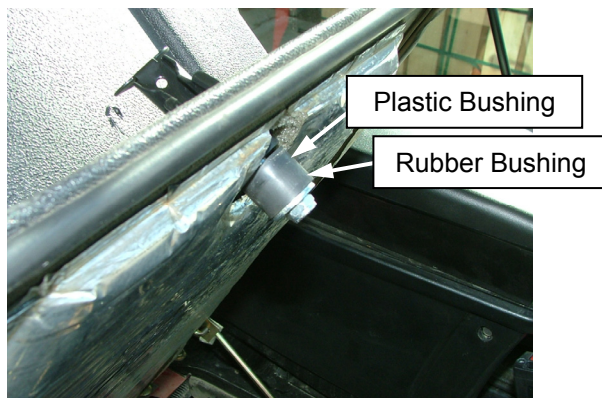
## INSTALLATION INSTRUCTIONS

### A-11836 Cab with Doors Kit

15. Re-install doors and connect gas springs.
16. Open and close the doors. The striker stud can be adjusted for proper 2-stage rotary latch engagement.
17. Layout hole location on each seat panel and drill a .375" diameter hole as shown in **Figure 8**. Install locking compression plungers (Item 17) into seat panels as shown in **Figure 9**.
18. Raise and lower seats. When lowered, rubber part of plunger is to fit into 1" hole located in rear mount panel. Fold lever to lock seat down, lift lever to tip seat up.



**Figure 8**



**Figure 9**

19. Additional foam seal and butyl tape is supplied with hardware kit and can be installed in various areas as needed.
20. Make sure all installation hardware is fully tightened at this time. Reconnect battery.
21. Cab installation is now complete.
22. Proceed with replacing the vehicle's standard front leaf springs with **heavy duty front springs, Toro P/N 99-0569 (Purchased separately from The Toro Company)**.

**Optional kits are available for your Multi-Pro 5800 Sprayer Cab and are noted below;**

- |         |  |
|---------|--|
| A-11838 | Wiper kit, radial coverage with park, switch, wiring and fuse                    |
| A-11839 | Washer fluid tank with pump, wet arm, switch, wiring and fuse                    |
| A-11840 | Interior mirror, full width 5 panel  |
| A-11841 | Air Conditioner kit, compressor, condenser, plenum, wire harnesses and controls  |
| A-11845 | Defroster fan kit with switch, wiring and fuse                                   |
| 99-0569 | Heavy Duty Leaf Springs (Supplied by the Toro Company; (2) required per machine) |



**Sunshade and Front Window kits are also available for the Multi-Pro 5800 Sprayer;**

- |         |                                 |
|---------|---------------------------------|
| A-11837 | Sunshade roof and frame         |
| A-11842 | Front window for sunshade frame |

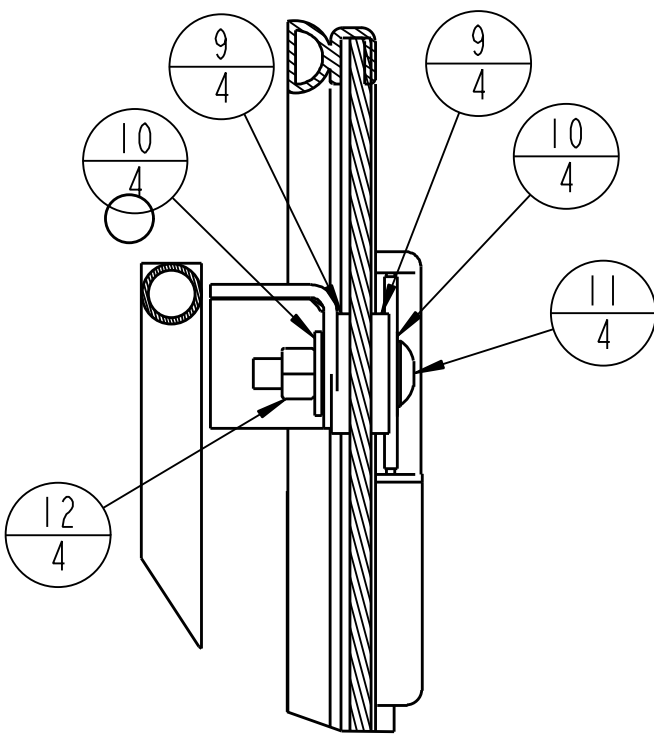
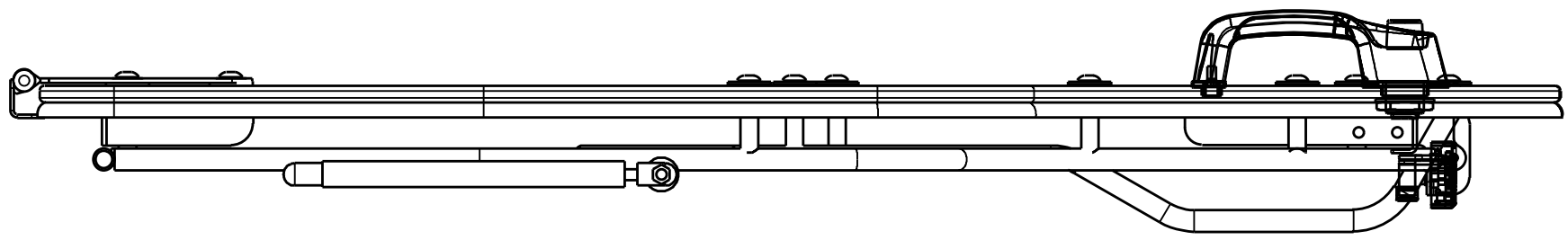
**For questions or comments, contact;**



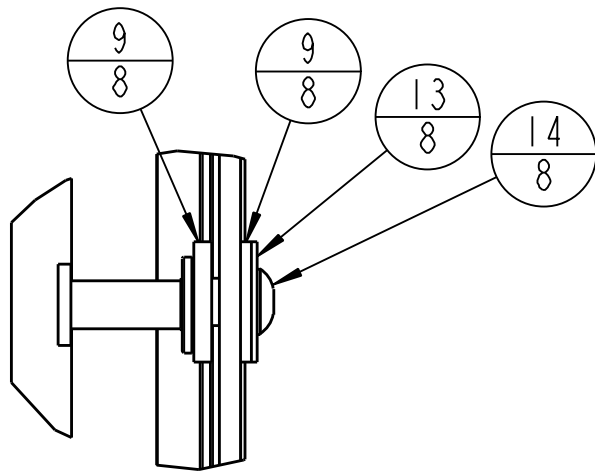
PO BOX 70, 1715 S. Sibley Avenue, Litchfield, MN 55355-0070  
Ph: (320) 693-3221 Fax: (320) 693-7252  
Website: [www.800cabline.com](http://www.800cabline.com)

05-11069  
12/27/2012

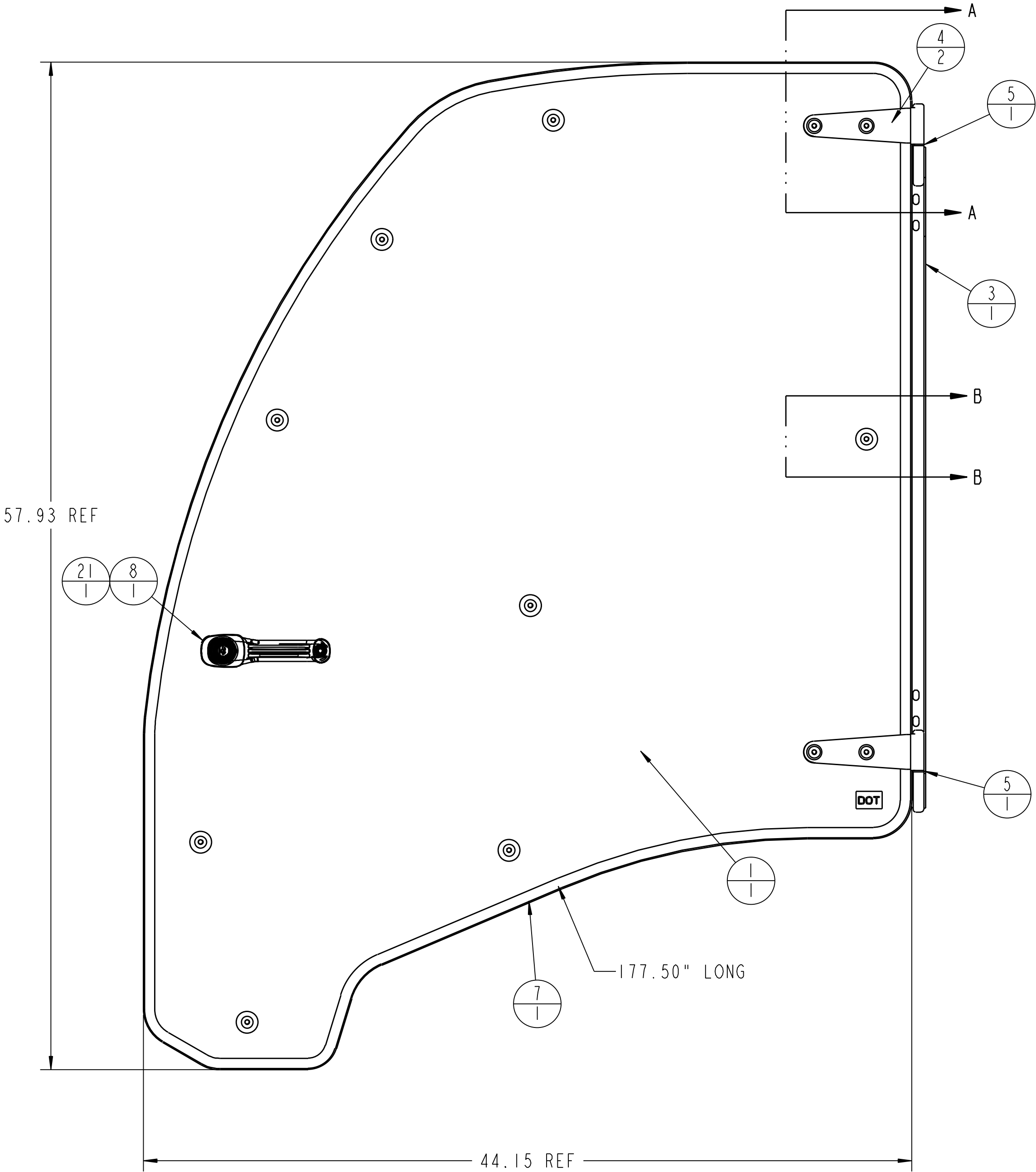
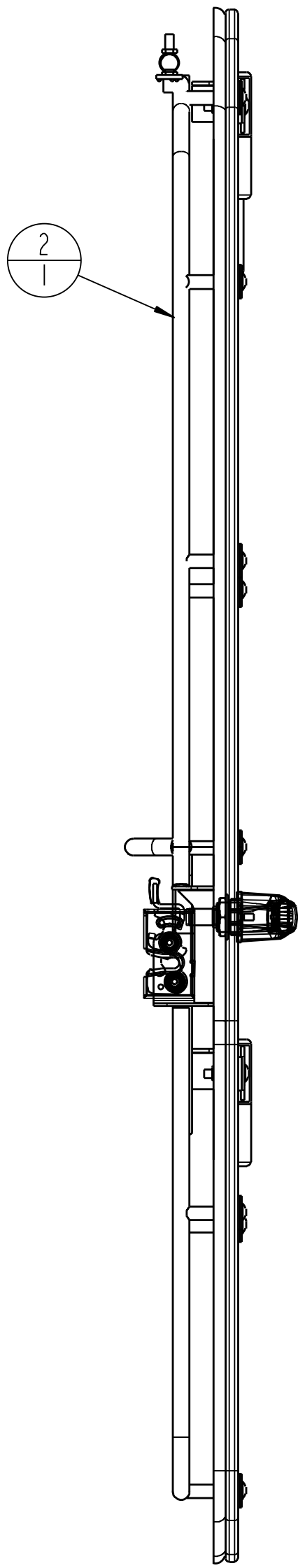
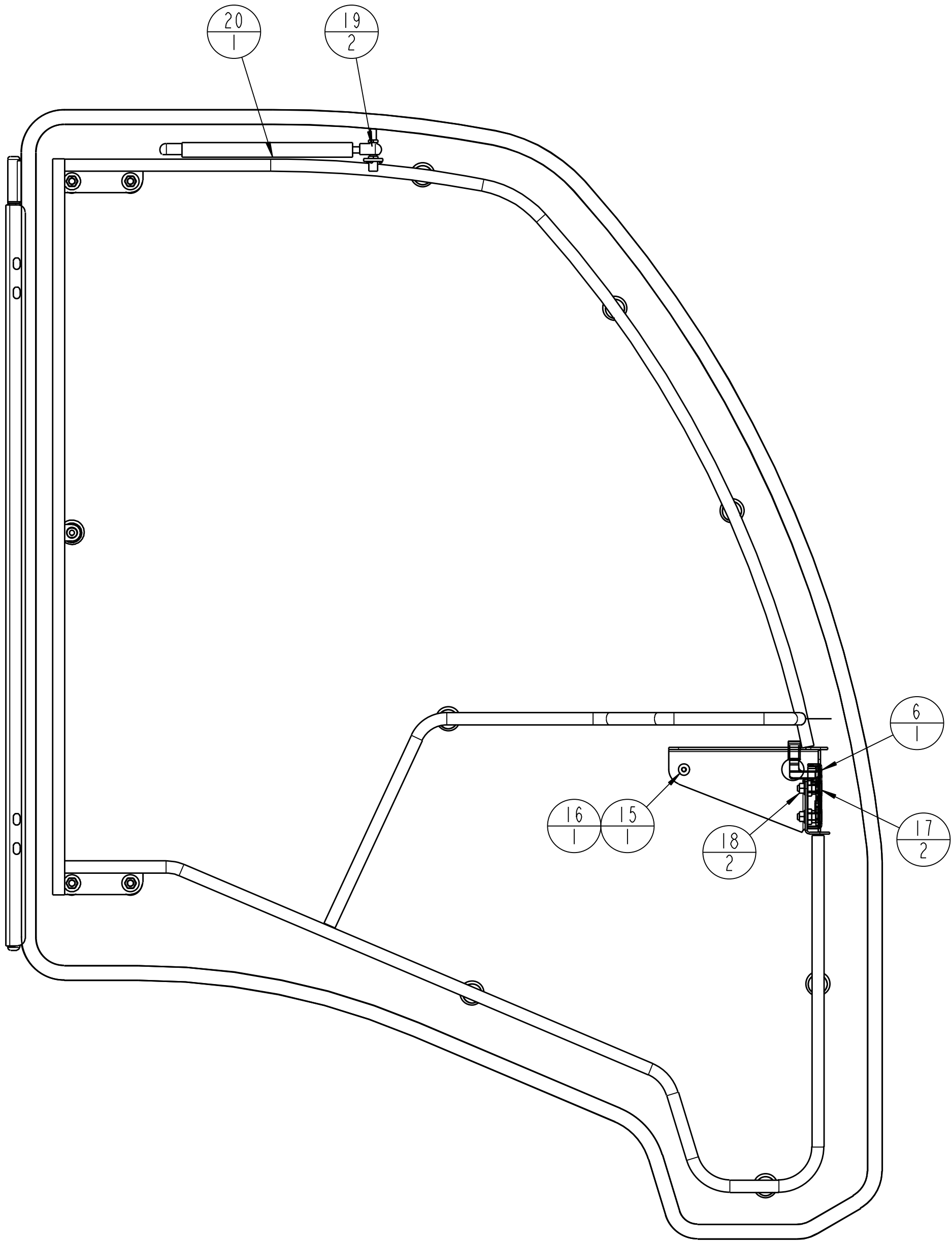
| REV. | DCR NO. | DESCRIPTION                     | DRAFTSMAN | DATE     |
|------|---------|---------------------------------|-----------|----------|
| A    | 9934    | CHANGED BOLT LENGTH SECTION A-A | LPJ       | 10/25/10 |
| B    | 10016   | LATCH 3-19308 WAS 3-19309       | CAD       | 12/8/10  |



SECTION A-A  
SCALE 0.500



SECTION B-B  
SCALE 0.500



| ITEM # | DESCRIPTION                     | QTY |
|--------|---------------------------------|-----|
| 1      | 3-19500_DOOR_GLASS_TORO_5800    | 1   |
| 2      | 2-16597_DOOR_FRAME_LH           | 1   |
| 3      | 2-16603_DOOR_MOUNT_LH           | 1   |
| 4      | 2-16504_HINGE_DOOR_WELDMENT     | 2   |
| 5      | 3-15971_HINGE_WASHER            | 2   |
| 6      | 3-19308_LATCH_DLP_615100-2_SW   | 1   |
| 7      | 3-19324_BUB_RUB_DOOR_177_50     | 1   |
| 8      | 3-19307_HANDLE_EXTERI_SW0001    | 1   |
| 9      | 3-16217_GLASS_WASHER            | 24  |
| 10     | 3-10085_3125_WASHER             | 8   |
| 11     | 3-19342_MSCR_313X150_TRUSS_TORX | 4   |
| 12     | 3-10072_3125_NYLOCK             | 4   |
| 13     | 3-18187_31_FENDER_WASHER        | 8   |
| 14     | 3-18324_313_18_NC_125_TH_TORX   | 8   |
| 15     | 3-10076_250_LOCK_WASHER         | 1   |
| 16     | 3-18312_MSCR_M6X20_TH_TORX      | 1   |
| 17     | 3-18453_MSCR_312-18X125_FH_TORX | 2   |
| 18     | 3-17111_SER_FLNG_NUT_312        | 2   |
| 19     | 3-11821_BALL_STUD               | 2   |
| 20     | 3-13024_GAS_SPRING_6IN          | 1   |
| 21     | 3-19325_FOAM_SPACER_DOOR_MIR    | 1   |

WEIGHT = 56.2 LBS

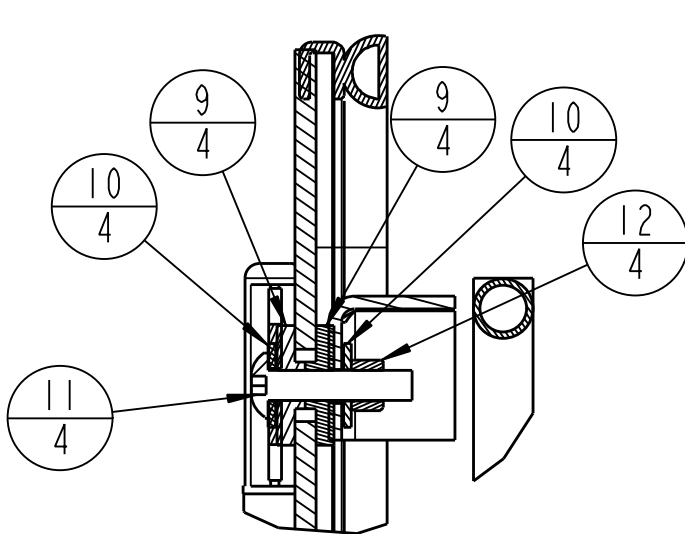
REFERENCE MIRROR PART 4-15537

|   |  |  |                   |                |  |
|---|--|--|-------------------|----------------|--|
| TOLERANCES UNLESS NOTED OTHERWISE                                       |  | CUSTOMER NAME & MOD NO: A-11836 TORO 5800 MY 10            |                   | MATERIAL SPEC: |  |
| X ± .09<br>XX ± .06<br>XXX ± .03<br>HOLE SIZE<br>1/16/100<br>ANGLE ± 5° |  | CUSTOM PRODUCTS 1775 SOUTH SIBLEY AVE LITCHFIELD, MN 55355 |                   |                |  |
| TITLE   |  | DRWG SIZE  | DRWG NO.          | REV LEVEL      |  |
| DOOR ASM LH   |  | D  | 4-15536<br>1 of 1 | B              |  |
| DRAWN: CAD  |  | DATE   |                   | 04-21-10       |  |

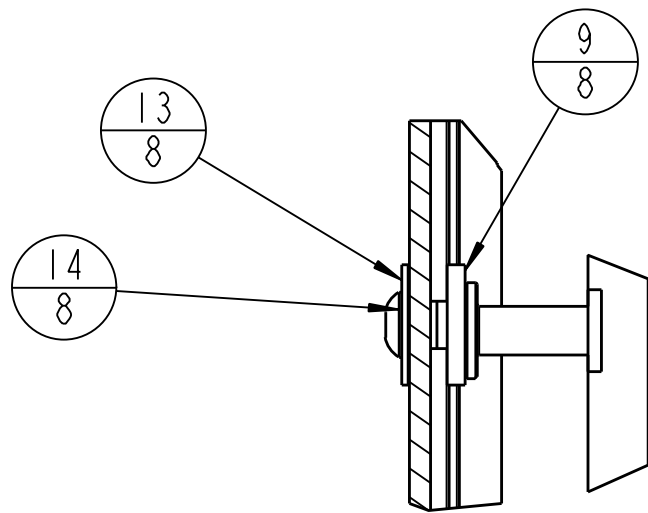
SCALE 0.200



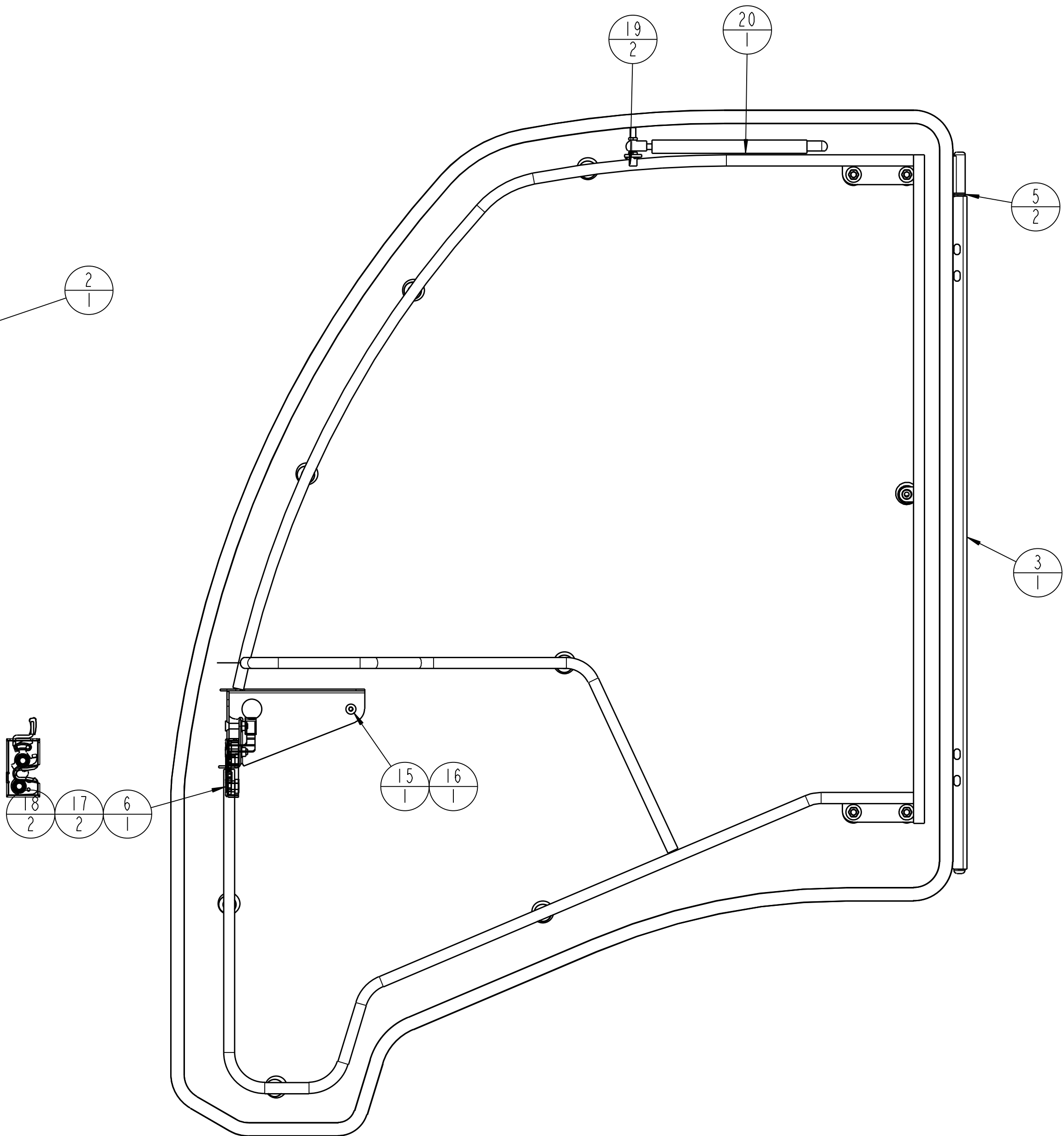
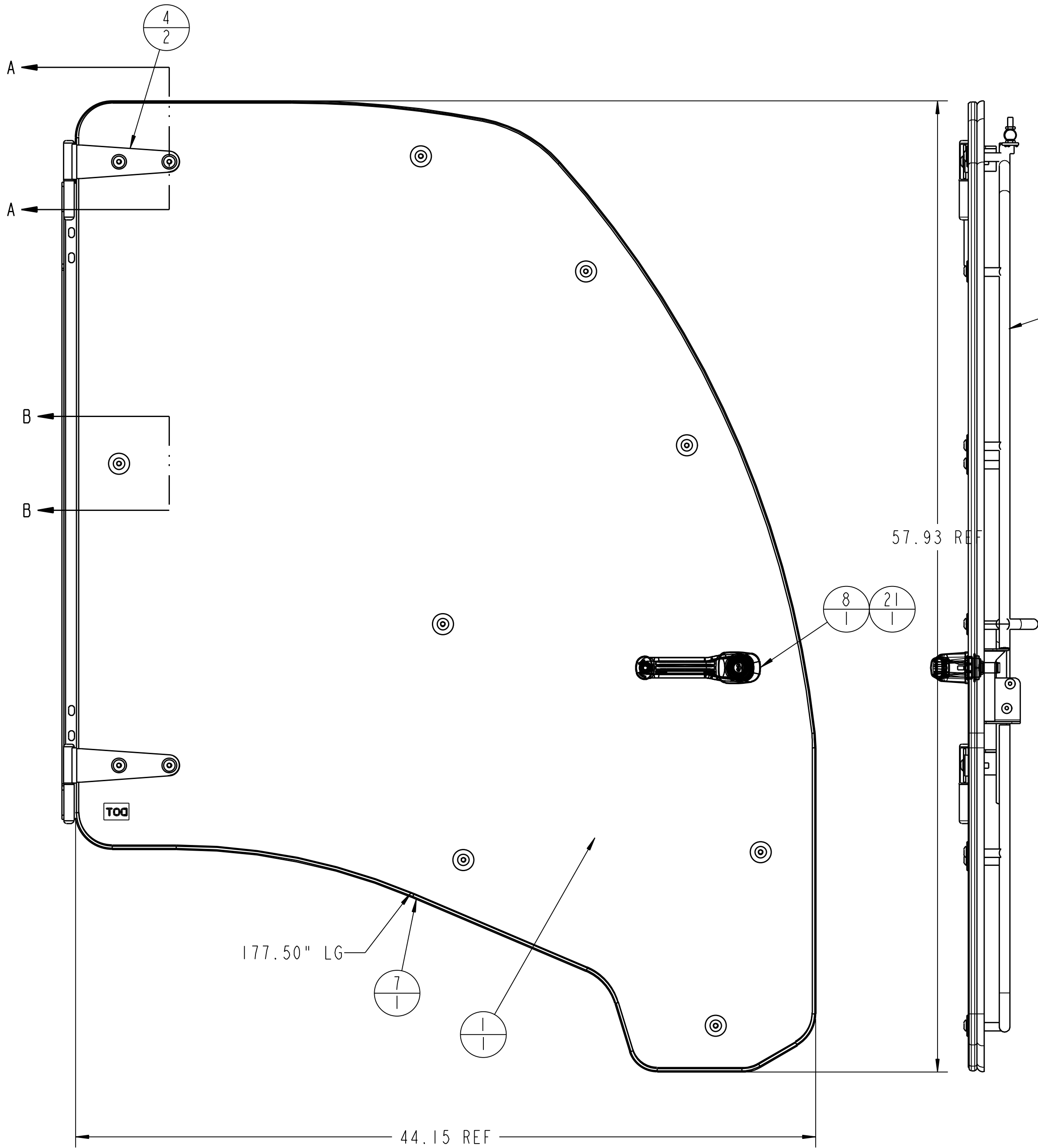
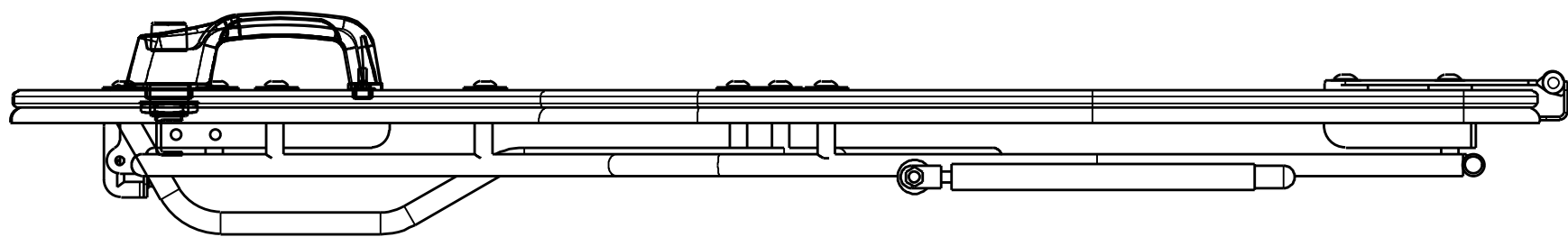
| REV. | DCR NO. | DESCRIPTION                     | DRAFTSMAN | DATE     |
|------|---------|---------------------------------|-----------|----------|
| A    | 9934    | CHANGED BOLT LENGTH SECTION A-A | LPJ       | 11/25/10 |
| B    | 10016   | LATCH 3-19309 WAS 3-19308       | CAD       | 12/8/10  |



SECTION A-A  
SCALE 0.500



SECTION B-B  
SCALE 0.500



SCALE 0.200

| ITEM # | DESCRIPTION                     | QTY |
|--------|---------------------------------|-----|
| 1      | 3-19500_DOOR_GLASS_TORO_5800_MR | 1   |
| 2      | 2-16598_DOOR_FRAME_RH_MIR       | 1   |
| 3      | 2-16604_DOOR_MOUNT_RH_MIR       | 1   |
| 4      | 2-16504_HINGE_DOOR_WELDMENT_MR  | 2   |
| 5      | 3-15971_HINGE_WASHER_MIR        | 2   |
| 6      | 3-19309_LATCH_DLP_MIR_REF_-1    | 1   |
| 7      | 3-19324_BUB_RUB_MIR_177_50      | 1   |
| 8      | 3-19307_HANDLE_EXTERI_SWI_MIR   | 1   |
| 9      | 3-16217_GLASS_WASHER_MR         | 24  |
| 10     | 3-10085_3125_WASHER_MIR         | 8   |
| 11     | 3-19342_MSCR_313X150_TRUSS_TORX | 4   |
| 12     | 3-10072_3125_NYLOCK_MIR         | 4   |
| 13     | 3-18187_31_FENDER_WASHER_MR     | 8   |
| 14     | 3-18324_313_18_NC_125_TH_TRX_MR | 8   |
| 15     | 3-10076_250_LOCK_WASHER_MIR     | 1   |
| 16     | 3-18312_MSCR_M6X20_TH_TORX_MIR  | 1   |
| 17     | 3-18453_MSCR_312-18X125_FH_TRX_ | 2   |
| 18     | 3-17111_SER_FLNG_NUT_312_MIR    | 2   |
| 19     | 3-11821_BALL_STUD_MIR           | 2   |
| 20     | 3-13024_GAS_SPRING_6IN_20_MIR   | 1   |
| 21     | 3-19325_FOAM_SPACER_DOOR_MIR    | 1   |

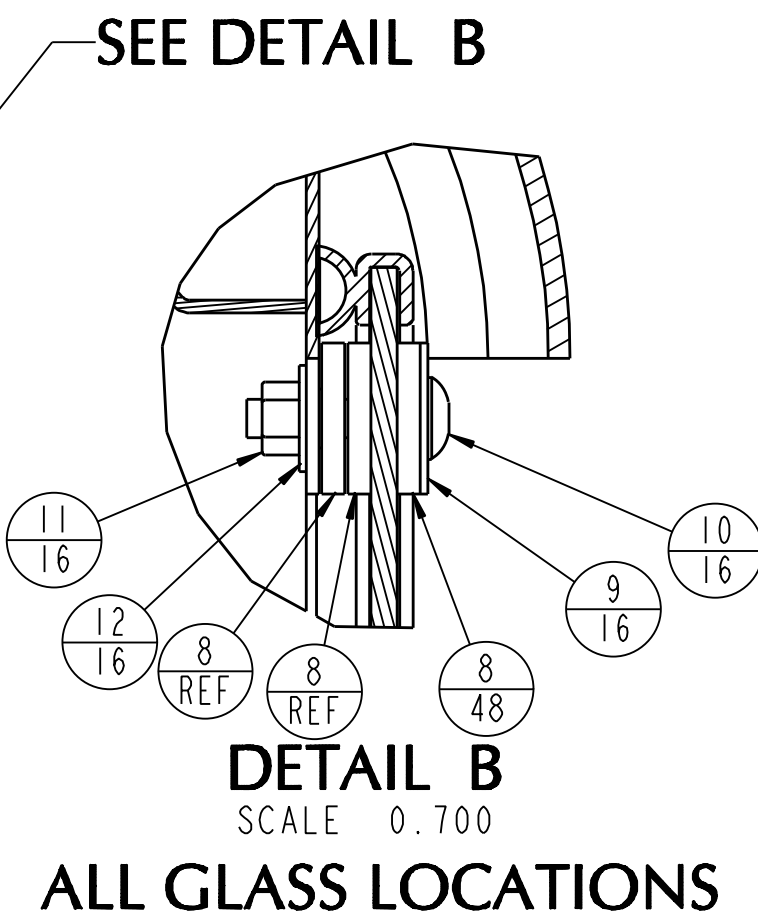
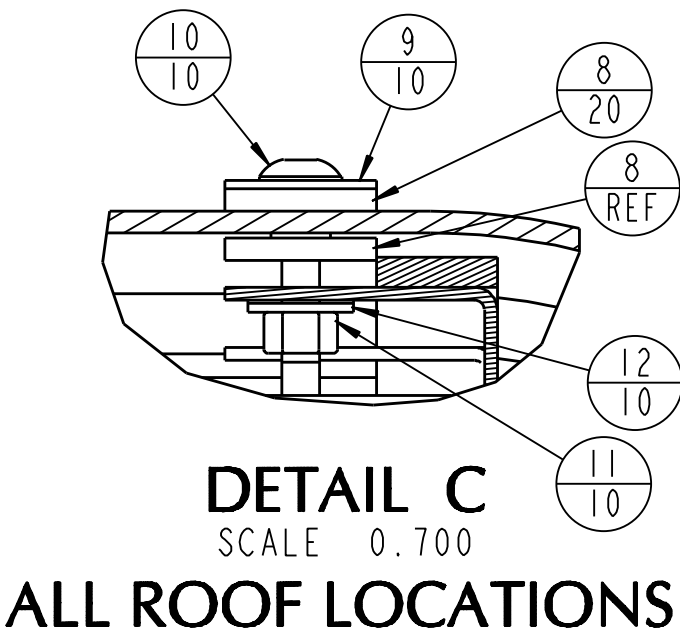
WEIGHT = 56.2 LBS

REFERENCE MIRROR PART 4-15536

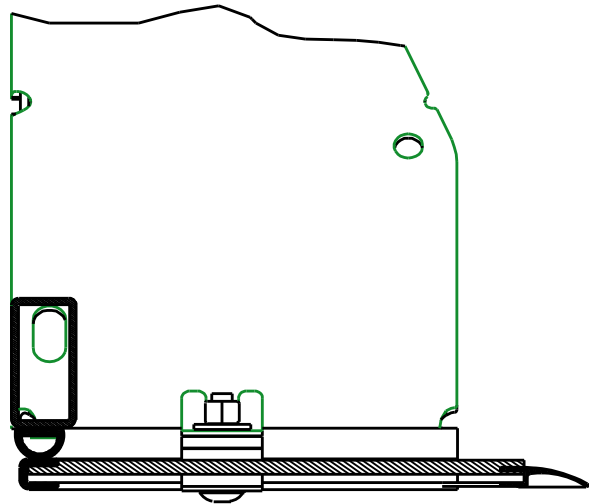
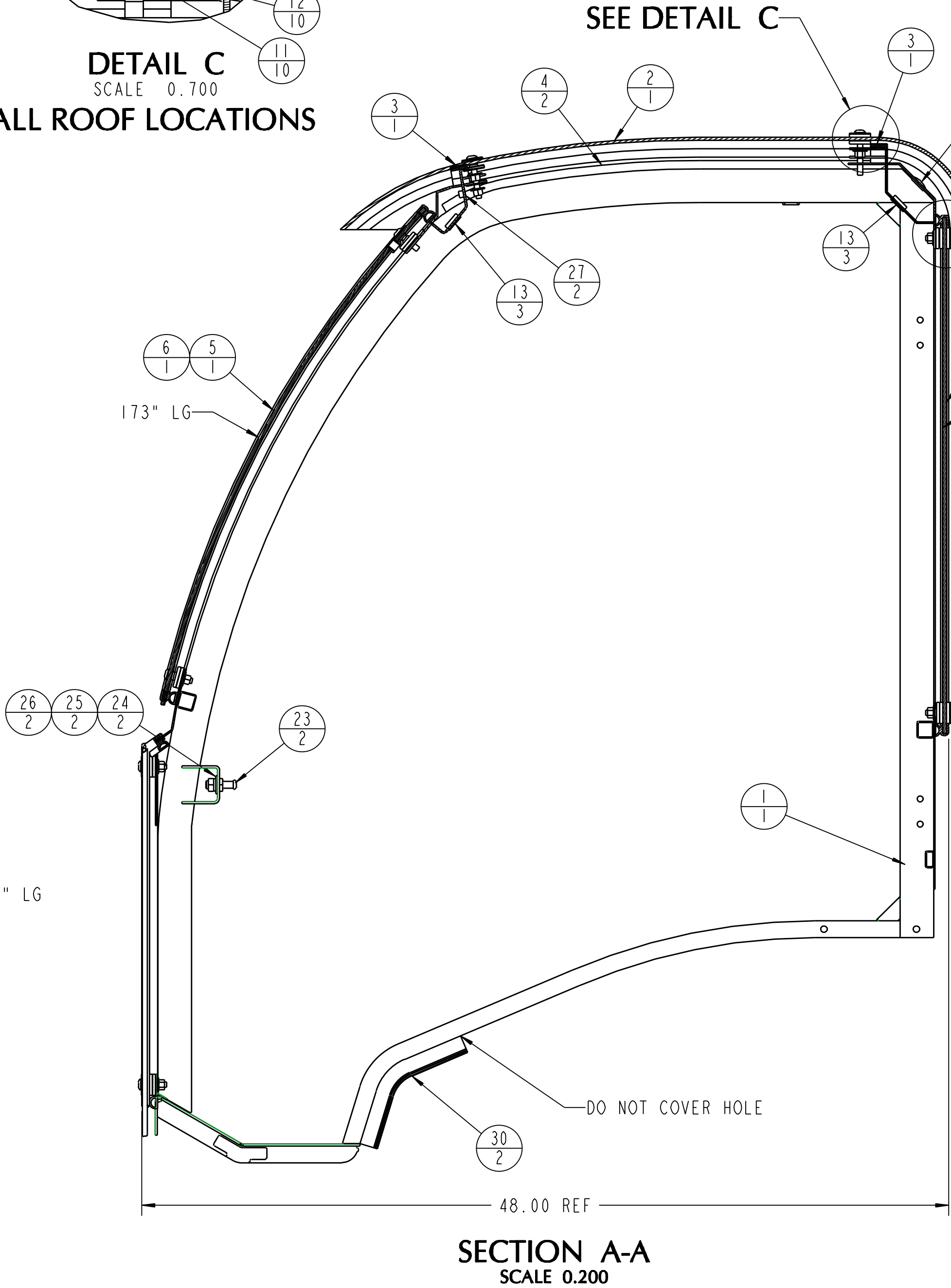
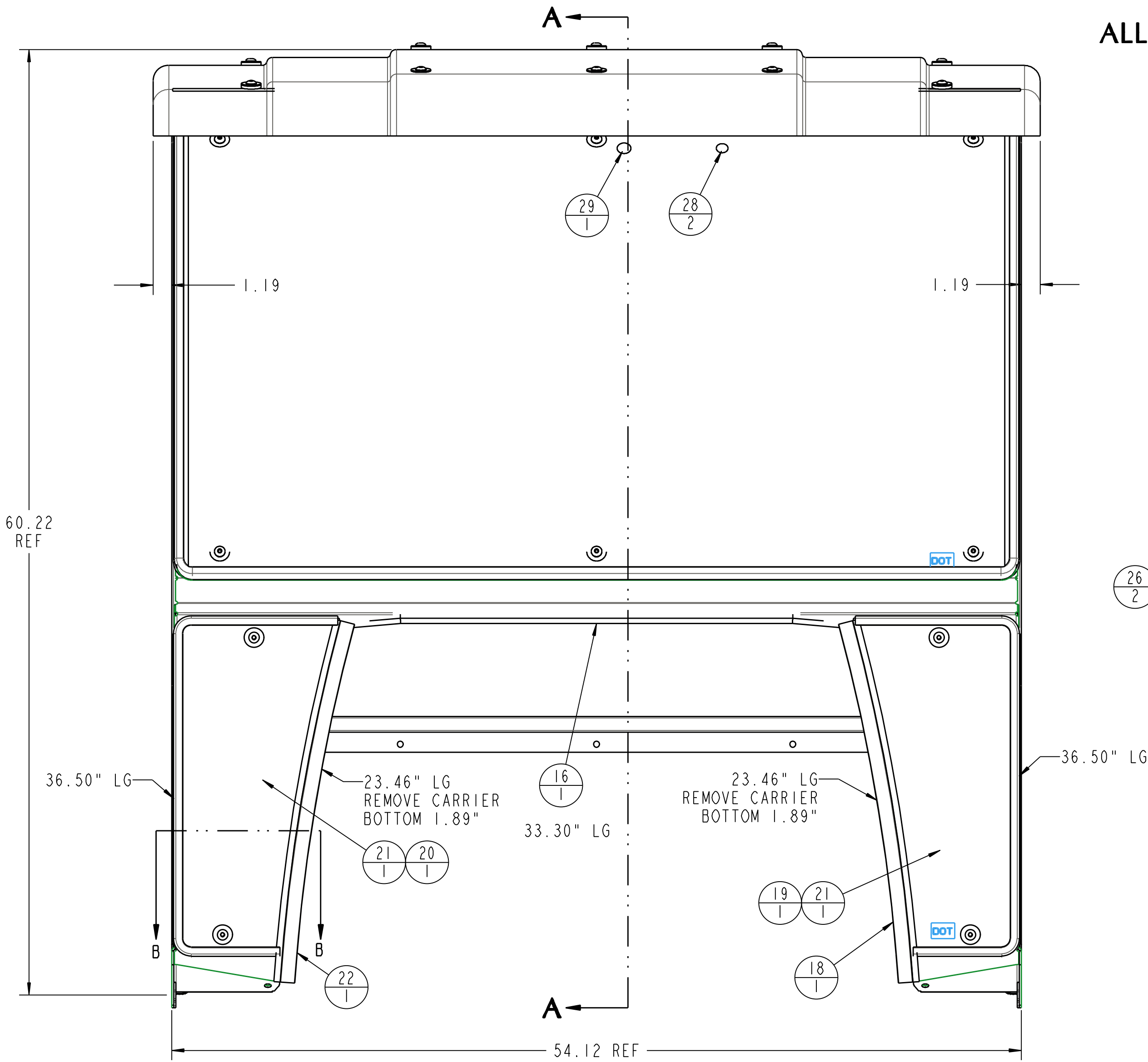
THIS DOCUMENT CONTAINS CONFIDENTIAL INFORMATION AND IS THE PROPERTY OF CUSTOM PRODUCTS OF LITCHFIELD, INC. AND MAY NOT BE COPIED, REPRODUCED OR DISCLOSED IN ANY MANNER WITHOUT EXPRESSED WRITTEN CONSENT FROM CUSTOM PRODUCTS OF LITCHFIELD, INC.

|  |   |               |  |                |
|--|---|---------------|--|----------------|
| TOLERANCES<br>UNLESS NOTED<br>OTHERWISE<br><br>X ± .09<br>XX ± .06<br>XXX ± .03<br>HOLE SIZE<br>1/16/100<br>ANGLE ± 5° | CUSTOMER NAME & MOD NO: A-11836 TORO 5800 MY 10               |               | MATERIAL SPEC:                             |                |
|  | CUSTOM PRODUCTS 1715 SOUTH SIBLEY AVE<br>LITCHFIELD, MN 55355 |               |  |                |
|  | TITLE<br><br>DOOR ASM RH                                      |               | DRWG SIZE<br><b>D</b><br>4-15537<br>1 of 1 | REV LEVEL<br>B |
| DRAWN: CAD   |   | DATE 04-22-10 |  |                |

| REV. | DCR NO. | DESCRIPTION   | DRAFTSMAN | DATE     |
|------|---------|---|-----------|----------|
| A    | 9939    | ADDED ITEMS 28 & 29; ADDED SECTION A-A AND DETAIL VIEWS B & C | CAD       | 10-15-10 |
| B    | 9934    | ADDED ITEM 28 AND NOTE  | MRB       | 10-21-10 |
| C    | 9957    | ADDED ITEM 24 & 25; EXTENDED FLAT SEAL AND ADDED SECION B-B   | MRB       | 10-25-10 |
| D    | 9934    | ITEM 10 3-19342 WAS 3-18538                                   | LPJ       | 10/26/10 |



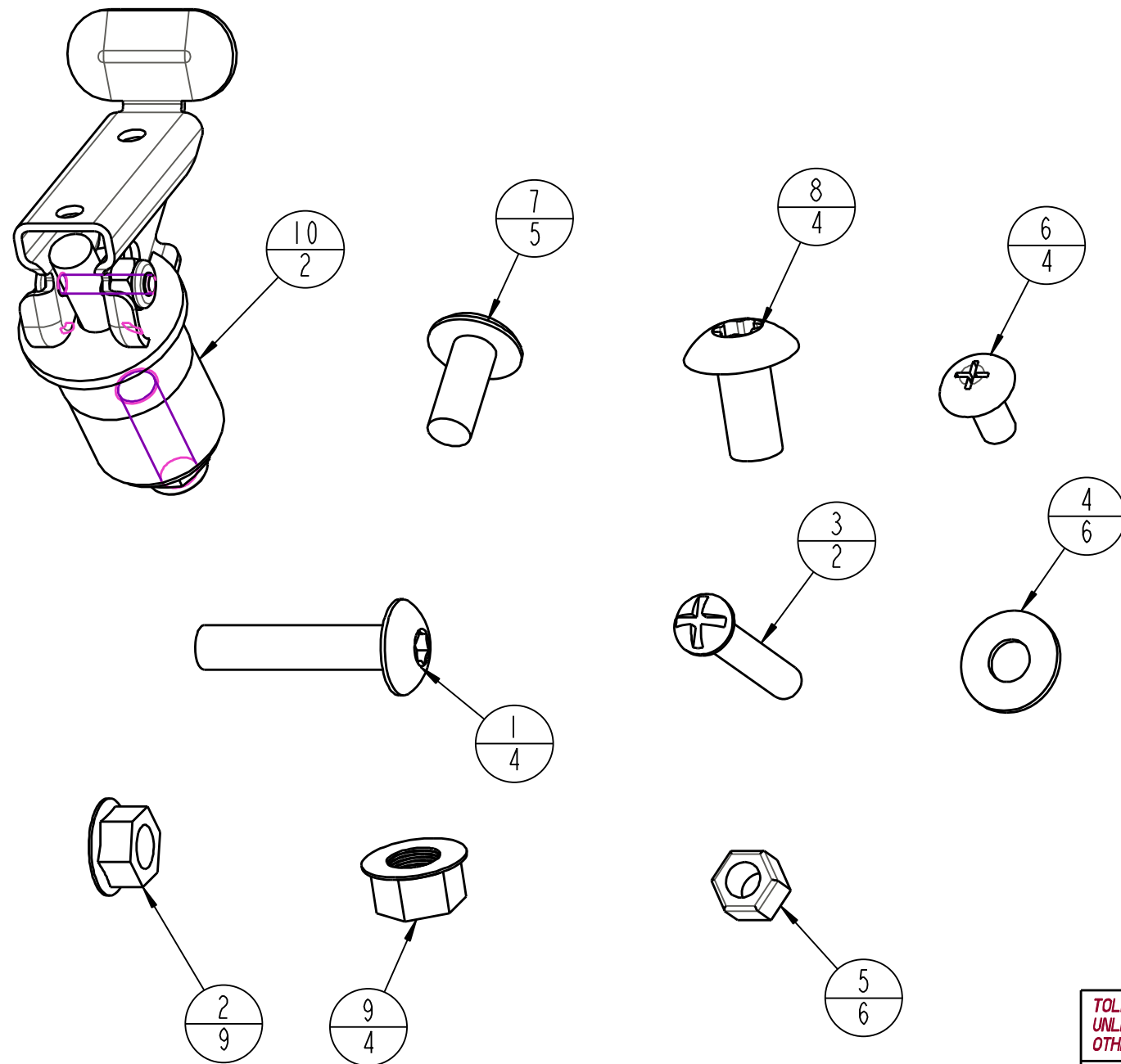
| ITEM # | DESCRIPTION                     | QTY |
|--------|---------------------------------|-----|
| 1      | 2-16599_CAB_WELDMENT            | 1   |
| 2      | 3-19501_ROOF_PANEL_ABS_WHITE    | 1   |
| 3      | 3-18805_FOAM_1X1X55LG           | 2   |
| 4      | 3-18805_FOAM_SEAL_1X1X26_LG     | 2   |
| 5      | 3-19499_FRONT_WINDOW_TORO_5800  | 1   |
| 6      | 3-19324_BUB_RUB_FRONT_173       | 1   |
| 7      | 3-19502_REAR_WINDOW             | 1   |
| 8      | 3-16217_GLASS_WASHER            | 68  |
| 9      | 3-18187_31_FENDER_WASHER        | 26  |
| 10     | 3-19342_MSCR_313X150_TRUSS_TORX | 26  |
| 11     | 3-10072_3125_NYLOCK             | 26  |
| 12     | 3-10085_3125_WASHER             | 26  |
| 13     | 3-18552_GROMMET_SNAP_UNIV_1_00  | 6   |
| 14     | 3-17390_1_HOLE_PLUG             | 3   |
| 15     | 3-19324_BUB_RUB_REAR_169        | 1   |
| 16     | 3-18829_BUB_RUB_33_3_LG         | 1   |
| 17     | 3-15658_BUB_RUB_33_3_LG         | 1   |
| 18     | 3-19349_FLAP_SEAL_23_46         | 1   |
| 19     | 3-19324_BUB_RUB_LO_36_50        | 1   |
| 20     | 3-19324_BUB_RUB_MIR_36_50       | 1   |
| 21     | 3-19503_WINDOW_FRONT_LO         | 2   |
| 22     | 3-19349_FLAP_SEAL_MIR_23_46     | 1   |
| 23     | 3-18069_STRIKER_DLP_10MM        | 2   |
| 24     | 3-12466_WASHER_50_TYPE_A_N      | 2   |
| 25     | 3-10079_50_LOCK_WASHER          | 2   |
| 26     | 3-18070_JAM_NUT_FOR_10MM_STRKR  | 2   |
| 27     | 3-14387_25_NUT-SERT             | 2   |
| 28     | 3-19336_RACHET_PLUG_375_X_250   | 2   |
| 29     | 3-19337_HOLE_PLUG_750_X_THICK   | 1   |
| 30     | 3-17865_D-SEAL-9_5IN-LONG       | 2   |



|  |  |                            |             |
|--|--|----------------------------|-------------|
| WEIGHT = 206.0 LBS   |  |                            |             |
| THIS DOCUMENT CONTAINS CONFIDENTIAL INFORMATION AND IS THE PROPERTY OF CUSTOM PRODUCTS OF LITCHFIELD, INC. AND MAY NOT BE COPIED, REPRODUCED OR DISCLOSED IN ANY MANNER WITHOUT EXPRESSED WRITTEN CONSENT FROM CUSTOM PRODUCTS OF LITCHFIELD, INC. |  |                            |             |
| TOLERANCES UNLESS NOTED OTHERWISE  | CUSTOMER NAME & MOD NO. A-11836 TORO 5800 MY 10            | MATERIAL SPEC.             |             |
|  | CUSTOM PRODUCTS 1715 SOUTH SIBLEY AVE LITCHFIELD, MN 55365 |                            |             |
| X ± .09<br>XX ± .06<br>XXX ± .03<br>HOLE SIZE 1/16 < .001<br>ANGLE ± 5°  | TITLE CAB SHELL ASSEMBLY                                   | DRAWING NO. 4-15538 1 of 1 | REV LEVEL D |
|  | DRAWN CAD  | DATE                       | 04-21-10    |



| REV. | DCR NO. | DESCRIPTION         | DRAFTSMAN | DATE     |
|------|---------|---------------------|-----------|----------|
| A    | 9934    | 3-19342 WAS 3-18538 | LPJ       | 10/27/10 |



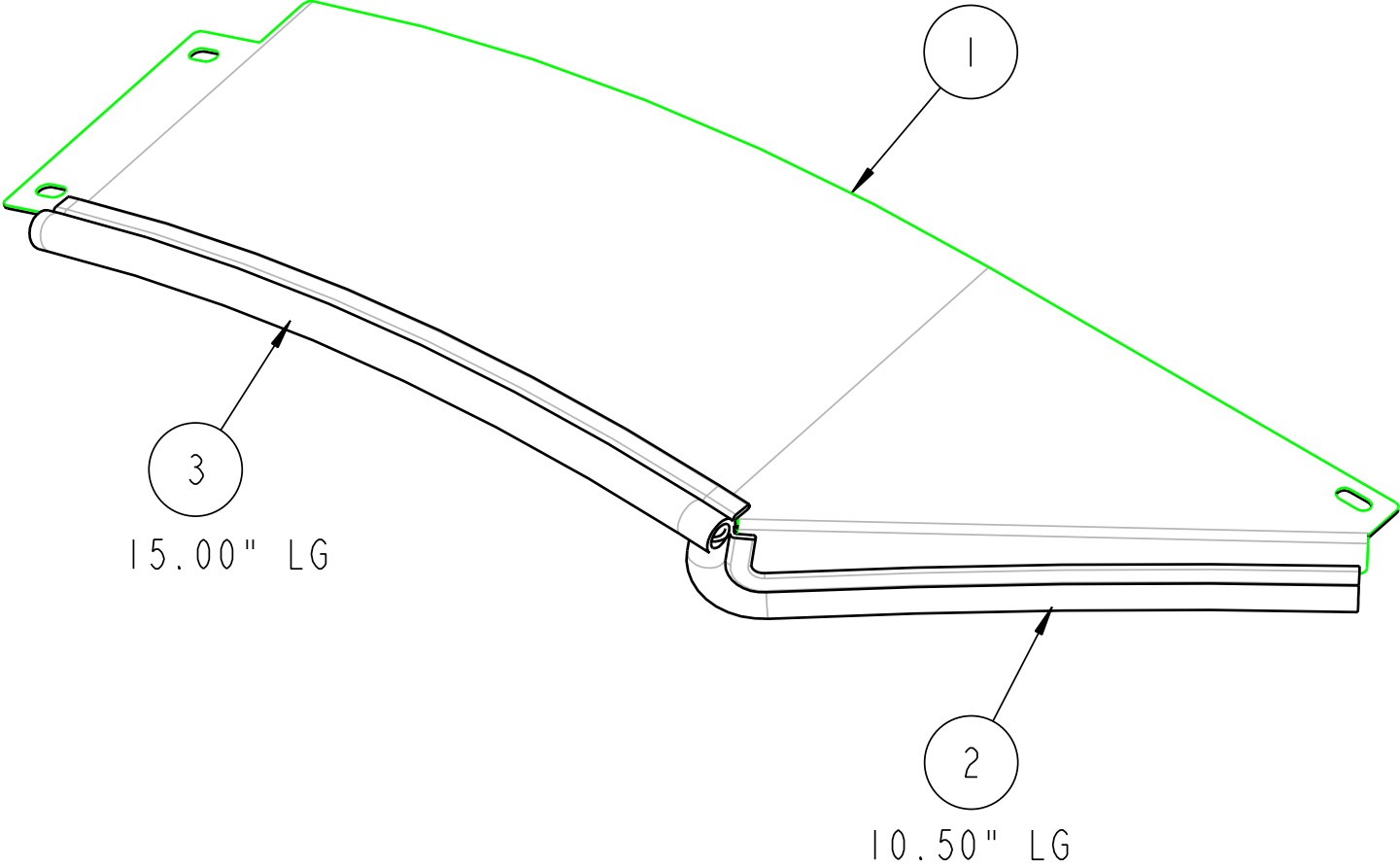
| ITEM # | DESCRIPTION                     | QTY |
|--------|---------------------------------|-----|
| 1      | 3-19342_MSCR_313X150_TRUSS_TORX | 4   |
| 2      | 3-17111_SER_FLNG_NUT_312        | 9   |
| 3      | 3-10101_MSCR_25_RHSL            | 2   |
| 4      | 3-10084_250_WASHER              | 6   |
| 5      | 3-10070_25_NYLOCK               | 6   |
| 6      | 3-17057_25X500_TH_PHIL          | 4   |
| 7      | 3-19340_MSCR_313X75_TRUSS_TORX  | 5   |
| 8      | 3-17805_375_75BH_TRX            | 4   |
| 9      | 3-17622_SER_FLG_NUT_375-16      | 4   |
| 10     | 3-19295_ASM_LOCKED              | 2   |
| 11     | 05-11069_MOUNT_INSTR_A-11836    | 1   |
| 12     | 3-16265_BAG_ZIPLOCK_10X12       | 1   |

SCALE 1.000

THIS DOCUMENT CONTAINS CONFIDENTIAL INFORMATION AND IS THE PROPERTY OF CUSTOM PRODUCTS OF LITCHFIELD, INC. AND MAY NOT BE COPIED, REPRODUCED OR DISCLOSED IN ANY MANNER WITHOUT EXPRESSED WRITTEN CONSENT FROM CUSTOM PRODUCTS OF LITCHFIELD, INC.

|  |  |  |            |          |           |
|--|--|--|------------|----------|-----------|
| TOLERANCES<br>UNLESS NOTED<br>OTHERWISE  | CUSTOMER NAME & MOD NO.: A-11836 TORO 5800 MY 11               |  | MATL SPEC: |          |           |
|  | CUSTOM PRODUCTS 1715 SOUTH SIBLEY AVE.<br>LITCHFIELD, MN 55355 |  |            |          |           |
| .X ± .09<br>.XX ± .06<br>.XXX ± .03<br>HOLE SIZE<br>+.015/-0.010<br>ANGLE ± .5 ° | TITLE<br><br>HARDWARE KIT                                      |  | DRWG SIZE  | DRWG NO. | REV LEVEL |
|  |  |  | B          | 4-15539  | A         |
|  | DRAWN: CAD   |  | DATE:      | 06-10-10 |           |

| REV. | DCR NO. | DESCRIPTION | DRAFTSMAN | DATE |
|------|---------|-------------|-----------|------|
|------|---------|-------------|-----------|------|



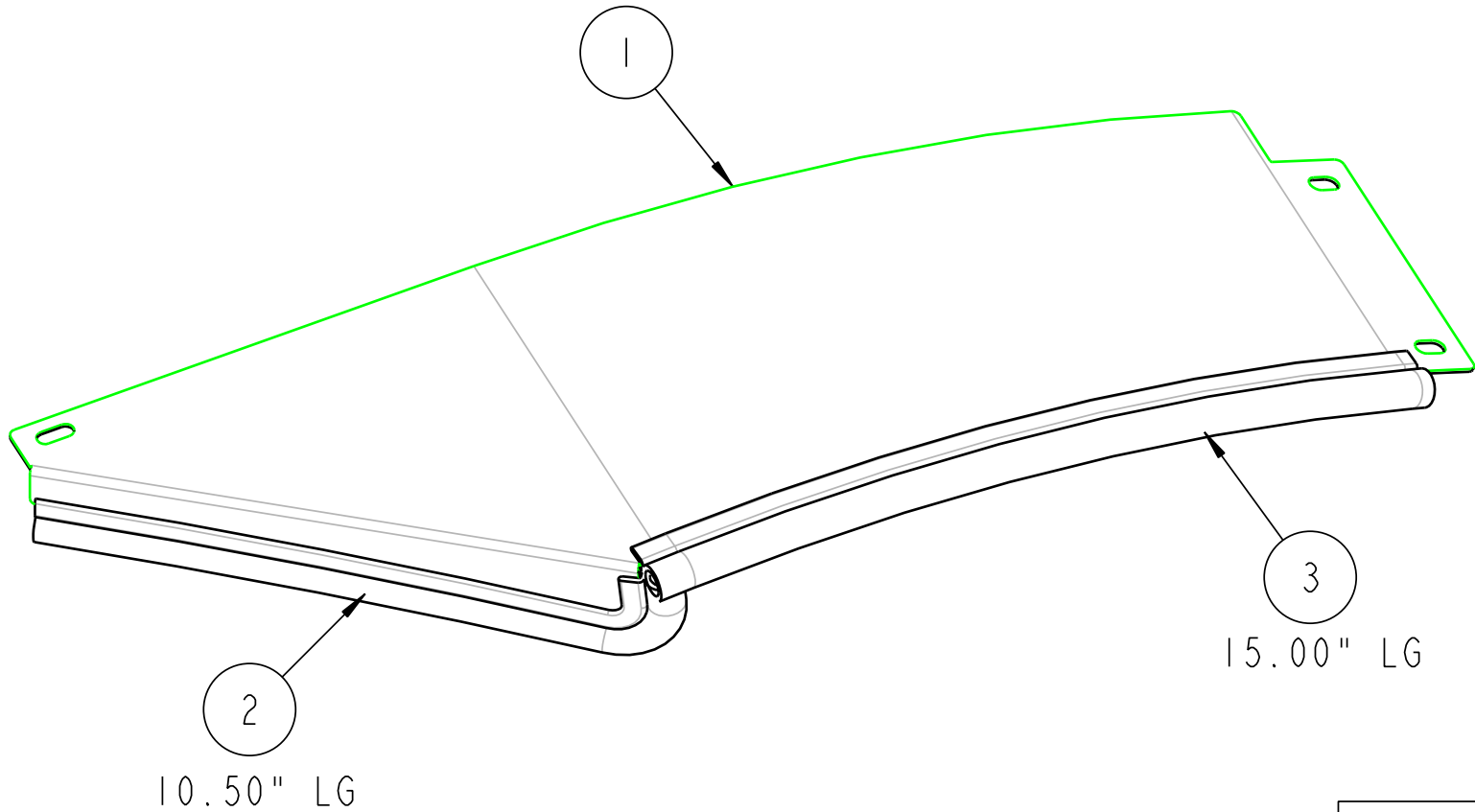
| ITEM # | DESCRIPTION                  | QTY |
|--------|------------------------------|-----|
| 1      | 1-47039_FENDER_SEAL_PANEL_LH | 1   |
| 2      | 3-18110_BUB_RUB_10_50_LG     | 1   |
| 3      | 3-18110_BUB_RUB_15_LG        | 1   |

QTY=1 PER ASM  
REF MIRROR RH ASM 4-15569

THIS DOCUMENT CONTAINS CONFIDENTIAL INFORMATION AND IS THE PROPERTY OF CUSTOM PRODUCTS OF LITCHFIELD, INC. AND MAY NOT BE COPIED, REPRODUCED OR DISCLOSED IN ANY MANNER WITHOUT EXPRESSED WRITTEN CONSENT FROM CUSTOM PRODUCTS OF LITCHFIELD, INC.

|  |                                   |                         |  |            |       |           |
|--|-----------------------------------|-------------------------|--|------------|-------|-----------|
| TOLERANCES<br>UNLESS NOTED<br>OTHERWISE  | CUSTOMER NAME & MOD NO.:          | A-11836 TORO 5800 MY 11 |  | MATL SPEC: |       |           |
|  | CUSTOM PRODUCTS                   |                         | 1715 SOUTH SIBLEY AVE.<br>LITCHFIELD, MN 55355 |            |       |           |
| .X ± .09<br>.XX ± .06<br>.XXX ± .03<br>HOLE SIZE<br>+0.05/-0.00<br>ANGLE ± .5° | TITLE<br><br>FENDER PANEL ASM, LH |                         | DRWG SIZE                                      | DRWG NO.   |       | REV LEVEL |
|  |                                   |                         | B  | 4-15568    |       |           |
|  |                                   |                         | DRAWN:   | CAD        | DATE: | 06-10-10  |

| REV. | DCR NO. | DESCRIPTION | DRAFTSMAN | DATE |
|------|---------|-------------|-----------|------|
|------|---------|-------------|-----------|------|



SCALE 0.333

| ITEM # | DESCRIPTION                  | QTY |
|--------|------------------------------|-----|
| 1      | 1-47040_FENDER_SEAL_PANEL_RH | 1   |
| 2      | 3-18110_BUB_RUB_MIR          | 1   |
| 3      | 3-18110_BUB_RUB_15_LG_MIR    | 1   |

QTY=1 PER ASM  
REF MIRROR RH ASM 4-15568

THIS DOCUMENT CONTAINS CONFIDENTIAL INFORMATION AND IS THE PROPERTY OF CUSTOM PRODUCTS OF LITCHFIELD, INC. AND MAY NOT BE COPIED, REPRODUCED OR DISCLOSED IN ANY MANNER WITHOUT EXPRESSED WRITTEN CONSENT FROM CUSTOM PRODUCTS OF LITCHFIELD, INC.

|   |                                   |                         |  |            |       |           |
|---|-----------------------------------|-------------------------|--|------------|-------|-----------|
| TOLERANCES<br>UNLESS NOTED<br>OTHERWISE   | CUSTOMER NAME & MOD NO.:          | A-11836 TORO 5800 MY 11 |  | MATL SPEC: |       |           |
|   | CUSTOM PRODUCTS                   |                         | 1715 SOUTH SIBLEY AVE.<br>LITCHFIELD, MN 55355 |            |       |           |
| .X ± .09<br>.XX ± .06<br>.XXX ± .03<br>HOLE SIZE<br>1:015/-.010<br>ANGLE ± .5 ° | TITLE<br><br>FENDER PANEL ASM, RH |                         | DRWG SIZE                                      | DRWG NO.   |       | REV LEVEL |
|   |                                   |                         | B  | 4-15569    |       |           |
|   |                                   |                         | DRAWN:   | CAD        | DATE: | 06-10-10  |