



A-11644 HEATER KIT FOR EZ CABS

12VDC, 15,000 BTU, 2-SP, 140 CFM

Note: This kit requires a minimum current draw of 8 amps at 12 VDC. Do not exceed the machine's available alternator capacity. If you do not know how much current is available, contact your dealer or manufacturer of this machine, prior to installing this kit.

Before you begin, read these instructions and identify components. Please retain these instructions for future reference and parts ordering information.

This kit is for use with or without headliner Kit A-11638. The headliner kit includes a main feed breaker and relay wire harness, 10-slot fuse block, accessories wire harness and switches wire harness.

Kit Components:	ITEM	QTY	PART NO.	DESCRIPTION
	1	1	1-46500	HEATER MOUNT BRACKET
	2	1	3-18067	HEATER UNIT 12V 15K BTU 2-SP
	3	2	3-18076	LOUVER, FOR HEATER UNIT 3-18067
	4	1	3-18190	ROCKER SWITCH BODY
	5	1	3-18511	ROCKER SWITCH ACTUATOR
	6	3	3-10127	1/4" X 3/4" SELFTAP SCREW
	7	2	3-18538	5/16" X 1.50" BUTTON HEAD BOLT
	8	2	3-17111	5/16" FLANGE NUT
	9	2	3-10730	GROMMET 1.375 HOLE
	10	2	3-11172	HEATER HOSE 5/8" ID x 4.00" LONG
	11	2	3-11172	HEATER HOSE 5/8" ID x 18.00" LONG
	12	1	3-16692	VALVE, H-VALVE TYPE, HEATER
	13	12	3-10858	HOSE CLAMP, No.10
	14	2	3-16693	REDUCER FITTING, 5/8" TO 1/2" HOSE
	15	2	3-14214	HEATER HOSE 1/2" ID x 48.00" LONG
	16	1	3-19155	HOSE COVER, FABRIC
	17	2	3-17517	NYLON TIE MOUNT PAD, PSA BACK
	18	8	3-16629	NYLON TIE, BLACK
	19	1	05-10846	MOUNTING INSTRUCTIONS A-11644
	20	1	3-10364	RED 14 GA WIRE 8 FT.
	21	3	3-10670	1/4" FEMALE TERMINAL BLADE CONNECTOR
	22	1	3-16057	FUSE, ATOATC, 10 AMP, RED
	23	1	3-10345	BLACK 14 GA WIRE 8 FT.
	24	1	3-10704	LOOM, PLASTIC 6 FT.
	25	1	3-18519	FUSE COVER
	26	2	3-10672	BUTT SPLICE CONNECTOR
	27	1	3-18231	FUSE HOLDER
	28	1	3-16074	1/4" MALE TERMINAL BLADE CONNECTOR
	29	1	3-18253	SPLICE T-TAP
	30	2	3-10669	TERMINAL 5/16 RING

Note: Cab should be installed prior to installing heater kit.

Preparation of Tractor:

1. Park tractor on level surface and turn ignition key off. Allow engine to cool.
2. Drain coolant from radiator.
3. Remove hood. NOTE: STEPS 3, 4 & 5 ARE NOT USED IN ALL APPLICATIONS.
4. Loosen rubber air cleaner intake hose and rotate. See Figure 1.
5. Remove gas spring bracket that holds hood up.
6. Remove water pump bypass hose. See Figure 1.
7. Attach (2) ½" x 48" long heater hoses to each water-pump bypass nipple. Route hoses to RH side of cab. See Figure 1.

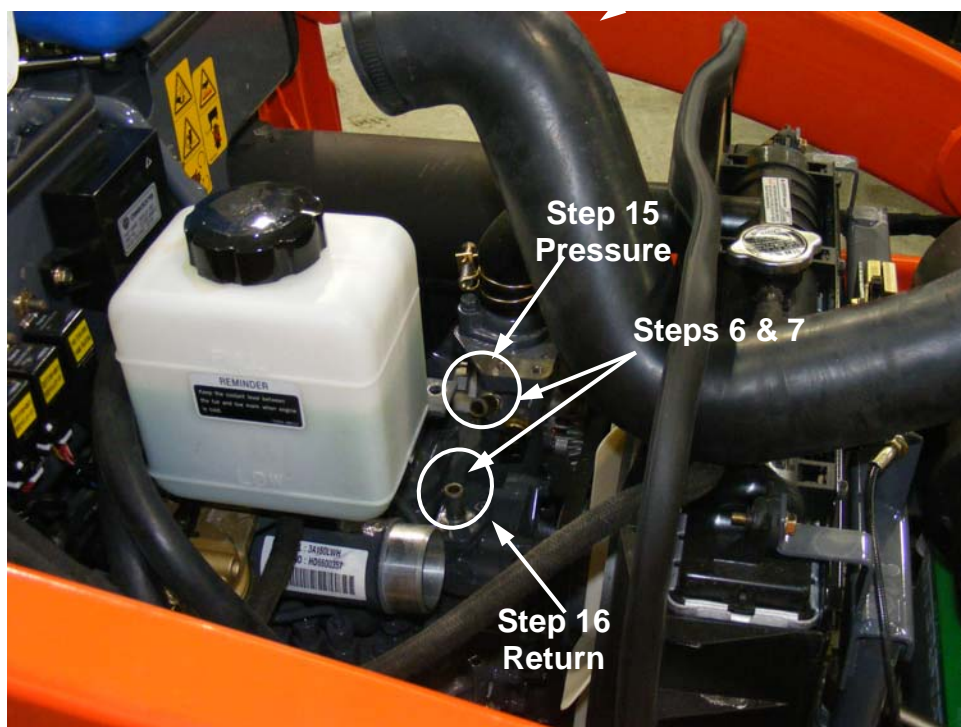


Figure 1

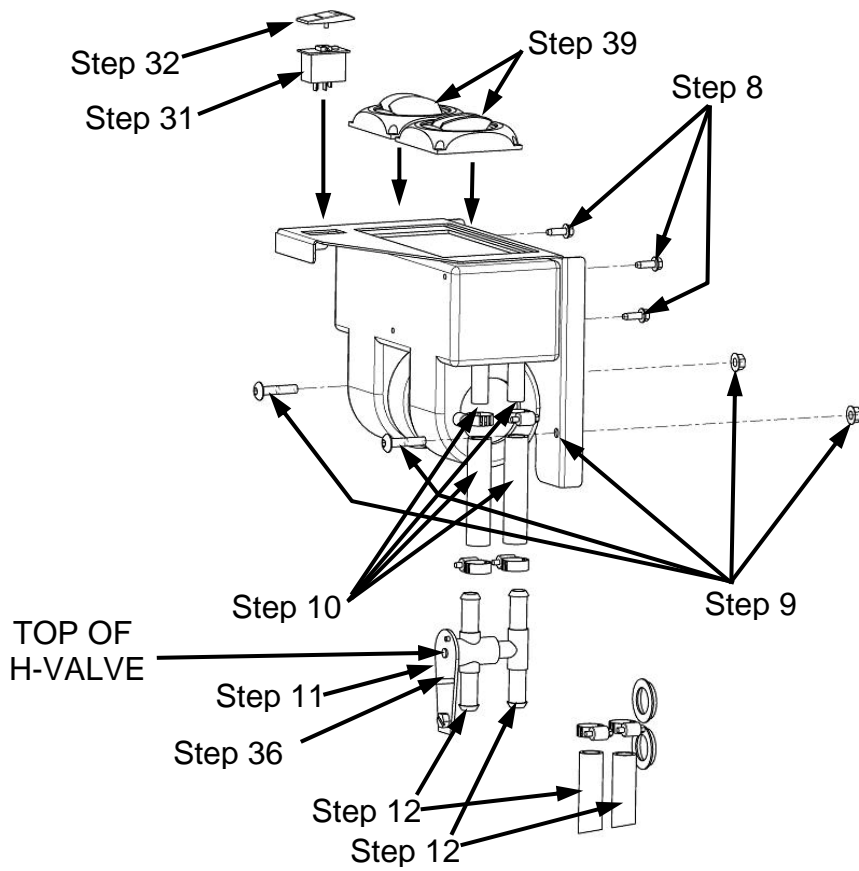


Figure 2

Heater Unit Installation:

8. Secure heater unit 3-18067 to mount bracket 1-46500 using (3) ¼" x ¾" long self-tapping screws. See Figure 2.



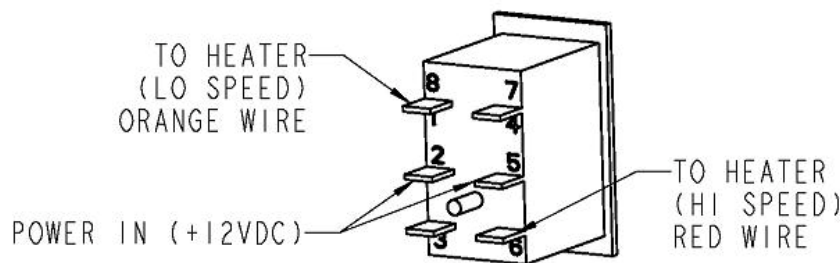
Figure 3

9. Secure heater unit with mount bracket to front lower cab panel using (2) 5/16" x 1.50" long button head bolts and (2) 5/16" flange nuts. See figure 2 & 3.
10. **Important! Remove and discard heater nipple cap plugs if present.** Connect (2) 5/8" x 4.00" long heater hoses onto heater nipples. Secure using (2) No.10 hose clamps. See Figure 2.
11. Orientate H-valve as shown in figures 2 & 3 and connect to the (2) 5/8" x 4.00" long hoses. Secure using (2) No.10 hose clamps.
12. Install (2) 5/8" x 18.00" long heater hoses to H-valve and secure using (2) No.10 hose clamps. See Figure 2.
13. Depending on which EZ CAB you are installing, cab may have (2) 1.375" knockouts from either the bottom RH side frame mount panel or front lower RH panel. Remove knockouts and install (2) 1.375" hose grommets. If knockouts are not present, route hoses along side front panel as shown in figure 3.
14. Route both 5/8" x 18.00" long hoses to front of cab.
15. Connect the 5/8" x 18.00" long heater hose from top of H-valve to the 1/2" x 48.00" long hose that routes from the top water pump nipple using (1) 5/8" to 1/2" hose reducer fitting and (2) No.10 hose clamps. See Figures 1 & 2.
16. Connect the remaining 5/8" x 18.00" long heater hose from bottom of H-valve to remaining 1/2" x 48.00" long hose that routes from the return water pump nipple using (1) 5/8" to 1/2" hose reducer fitting and (2) No.10 hose clamps. See Figures 1 & 2.

Connecting Electrical: Heater unit wires control the follow fan operations:

Orange –Lo speed
 Red –Hi speed
 Black – Ground (-12VDC)

17. Using a wire crimping tool, crimp (2) 1/4" female connector blade terminals (3-10670) to orange and red wires and (1) butt splice (3-10672) to the black wire of the heater unit.
18. Install rocker switch into heater mount bracket.
19. Install rocker switch actuator onto rocker switch.



**ROCKER SWITCH 3-18190
 TERMINAL LEGEND**

For cabs with headliners complete steps 18 through 22.

20. Remove (4) headliner bolts and allow headliner to tip down and rotate rearward. Allow headliner to hang from the cab side frame tubes.
21. Route the red and black wire supplied from the heater unit location up the inside front RH side frame tube to the headliner fuse block location. Crimp (1) terminal (3-10670) to each end of red the wire. Crimp (1) terminal (3-10669) to the black wire near the grounding stud in headliner. Connect the other end to the heater unit's black wire. At switch location add a 3" jumper wire to the red wire using "T" tap (3-18523) and connect to switch locations 2 & 5. See rocker switch legend and Figure 4.

22. Remove the fuse panel access cover from the headliner and select an empty fuse location.
23. Connect the red wire with a ¼" female terminal blade connector to the empty fuse location.
24. Connect the black wire with the 5/16" terminal eye to a ground stud located near the fuse block.

For cabs without headliners complete steps 23 through 28.

25. Route red and black wire supplied from the heater unit and switch area to power source of tractor. Using a blue wire butt splice connector, attach (1) inline ATO/ATC blade type fuse holder to red wire.
26. Attach a 3/8" terminal ring to the remaining end of inline fuse holder. Attach the red wire with inline fuse holder to +12VDC battery terminal.
27. Attach a 3/8" terminal ring to the black wire and attach to the -12VDC battery terminal.
28. Connect the red wire with inline fuse holder to rocker switch terminals 2 and 5.
29. Connect the black (-12VDC) wire, from the battery to the heater unit's black wire.

Completing wire connections (with and without headliner);

30. Connect the orange wire of wire harness from the heater unit to rocker switch terminal 8.
31. Connect the red wire of wire harness from the heater unit to rocker switch terminal 6.
32. Install a 10 amp fuse into the fuse block location or the inline fuse holder.

Completing Installation:

33. Re-fill the radiator.
34. Start tractor and allow engine to run at lo idle.
35. Toggle the rocker switch Hi, Off and Lo to verify proper fan operation.
36. Activate the H-valve by rotating the lever from side to side, several times. See figure 2.
37. Check coolant and purge remaining air from system.
38. Install the (2) louvers into heater unit as shown in figure 2.
39. For cabs with headliners, secure fuse block access cover panel and headliner.
40. Reconnect air intake hose.
41. Reinstall hood and gas spring bracket, if removed.
42. Secure loose hoses and install protective heater hose cover fabric to cover heater hoses.
43. Cover loose wires with plastic loom (3-10704) and secure with nylon ties and nylon tie mount pads.

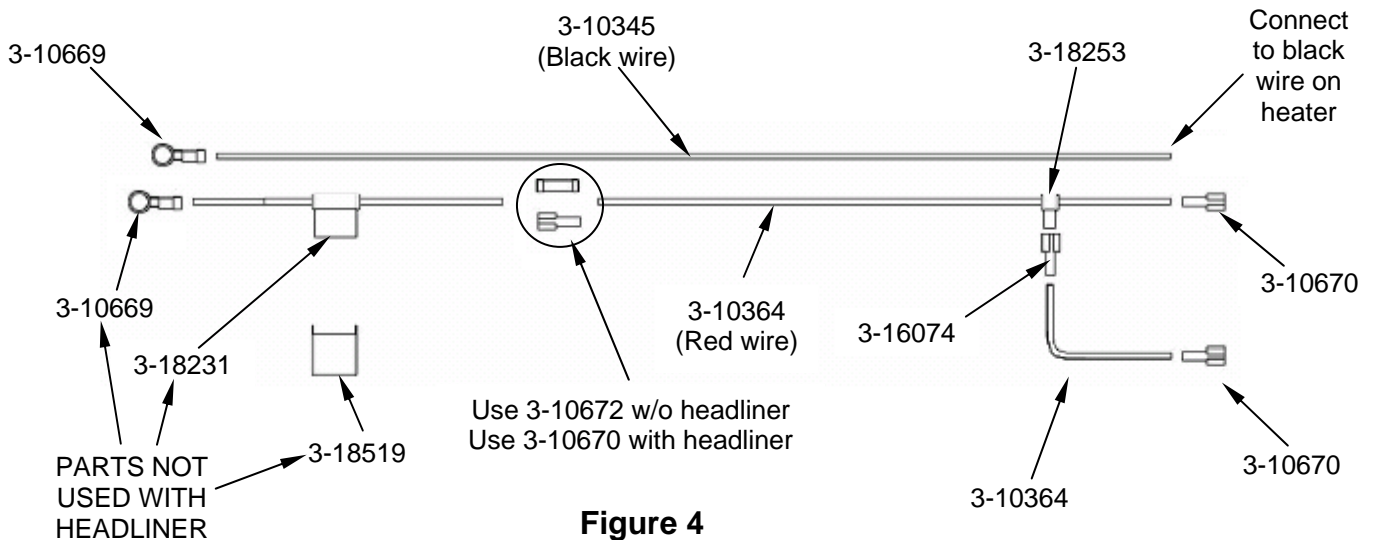


Figure 4

Manufactured by:

CUSTOM PRODUCTS
OF LITCHFIELD, INC.
BOX 70 • LITCHFIELD, MINNESOTA 55355-0070
(320) 693-3221 Fax: (320) 693-7252
www.800cabline.com

05-10846
February 15, 2010