



# A-11639 EZ CAB WIPER KIT 12VDC

**Note:** This kit can draw up to 4.5 amps at 12 VDC. Do not exceed the machine's available alternator capacity. If you do not know how much current is available, contact your dealer or manufacturer of this machine, prior to installing this kit.

This kit can be installed with or without Headliner Kit A-11638. Headliner kit includes a main feed breaker and relay wire harness, 10-slot fuse block, accessories and switches wire harnesses.

Before you begin, read these instructions and identify all components. Please retain these instructions for future reference and parts ordering information.

Kit Components:	ITEM	QTY	PART NO.	DESCRIPTION
	1	1	3-11100	WIPER MOTOR, 3" SHAFT, 2 SP WITH SWITCH
	2	1	3-13628	WIPER ARM, 16"
	3	1	3-15566	WIPER BLADE, FLEX, 18" LONG
	4	1	3-18189	ROCKER SWITCH, ON-OFF, LIT
	5	1	3-18606	ACTUATOR FOR ROCKER SW, WIPE IMPRINT
	6	1	05-10801	MOUNTING INSTRUCTIONS, WIPER, A-11639
	7	1	3-10083	No.10 FLAT WASHER
	8	1	3-18701	No.10 x 1/2" LONG, BUTTON HEAD BOLT
	9	1	3-13083	No.10 WASHER, EXTERNAL TOOTH LOCK
	10	1	3-18322	No.6 FLAT WASHER
	11	1	3-16582	FUSE, 5 AMP ATO/ATC BLADE TYPE
	12	1	3-10345	WIRE, BLACK, 14 GA X 9FT
	13	1	3-10364	WIRE, GREEN, 14 GA X 8 FT
	14	1	3-18231	FUSE HOLDER, ATO/ATC BLADE TYPE
	15	1	3-10672	BUTT SPLICE CONNECTOR, 14 GA BLUE
	16	1	3-10670	TERMINAL BLADE CON, FEMALE, 14 GA
	17	1	3-11433	TERMINAL RING CONNECTOR, 3/16"
	18	1	3-10674	TERMINAL RING CONNECTOR, 5/16"
	19	1	3-10669	TERMINAL RING CONNECTOR, 3/8"
	20	1	3-18519	FUSE HOLDER COVER

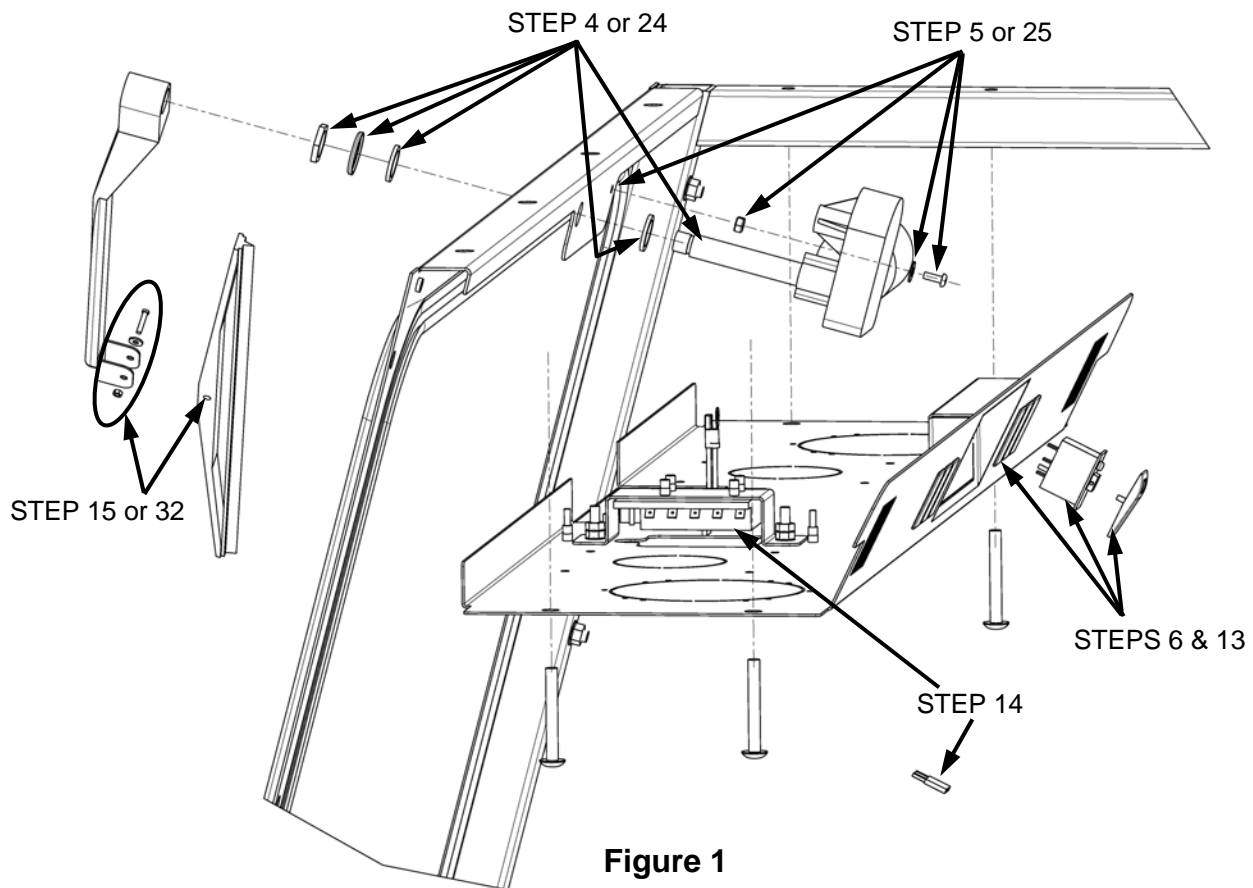
**Note:** Items 12 through 20 are **ONLY INSTALLED** if headliner is not present. If headliner is to be installed, headliner is already supplied with wire harnesses for connecting to fuse block, rocker switch and wiper motor.

Refer to drawings 4-15389, 3-19281 and 3-19282 in mounting instructions supplied with Headliner Kit A-11638 for detailed wiring information.

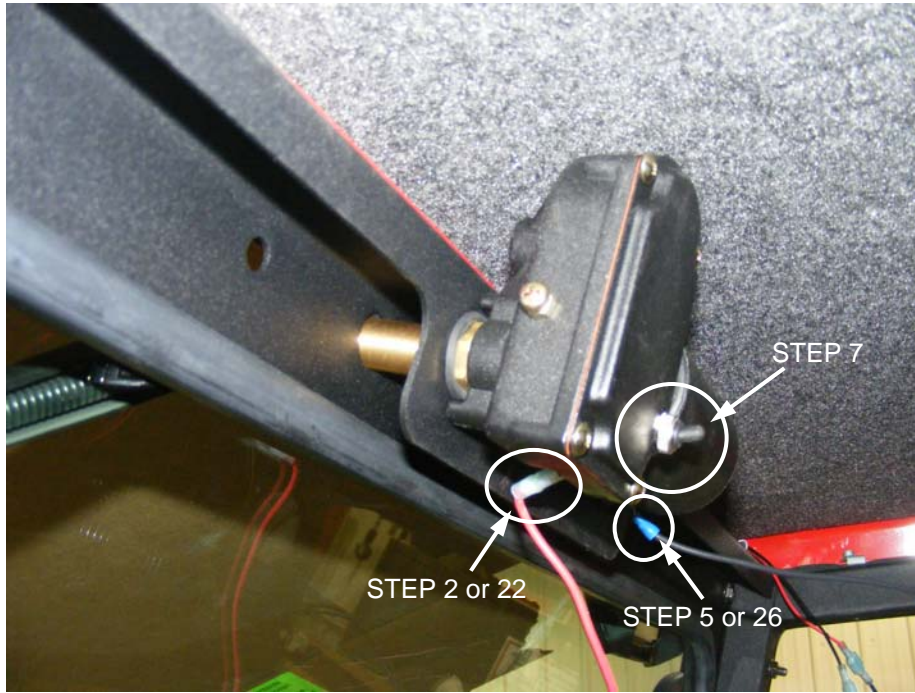
### Wiper Kit Installation with headliner (for cabs without headliners skip steps 1-20):

1. If headliner is already installed, remove the (4) 5/16" x 2.50" long button head bolts that secure the headliner to the inside of cab frame. See figure 1. Allow headliner to tip down and pivot rearward.
2. Locate switch to accessory wire harness 3-19281, supplied with headliner kit. Identify wire harness end for wiper motor connection. Connect green wire with female blade connector to wiper motor blade terminal. See figure 2.

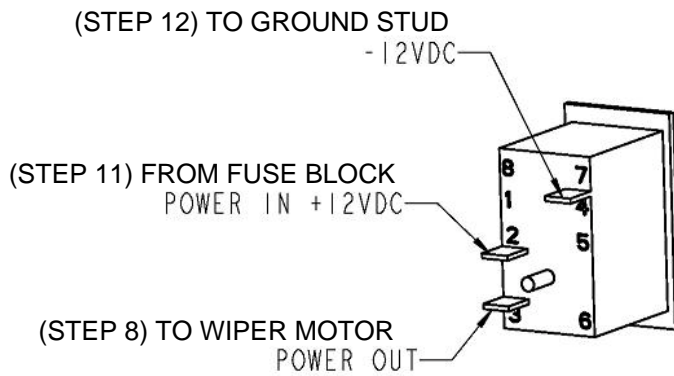
3. Remove (1) 7/8" hole-plug located at the top center of the windshield.
4. Install the wiper motor into front window panel and secure the threaded shaft of the wiper motor using hardware supplied with wiper motor. See figures 1 & 2.
5. Attach black ground wire with 3/16" round terminal eye to the slotted end of the wiper motor and front panel using (1) No. 10 x 5/8" long serrated flange screw, (1) No. 10 flat washer, (1) No.10 external tooth lock washer and (1) 10-24unc nylock nut. See figures 1 & 2.
6. The headliner will block access to the toggle switch located on the wiper motor. The rocker switch and switch actuator will need to be installed into the headliner. Select a location for the wiper switch and remove the rectangular plug.
7. Make sure the toggle switch located on the wiper motor is in the upward position. See figure 2.
8. Locate the switch to accessories wire harness 3-19281. Connect green wire from the wiper motor to rocker switch terminal 3. See figure 3.
9. Connect black wire from wiper motor mount bolt to a 1/4" ground stud on the headliner.
10. Remove fuse block cover and select an empty fuse location.
11. Locate fuse block to switches wire harness 3-19282, supplied with headliner kit. Connect green wire of wire harness from rocker switch terminal 2 to an empty fuse block location. See figure 3.
12. Connect the black wire from the rocker switch terminal 7 to a 1/4" ground stud. See figure 3.
13. Install rocker switch and switch actuator into headliner. See Figure 1.
14. Install 5 amp fuse into the empty fuse location. See Figure 1.



**Figure 1**



**Figure 2**



**ROCKER SWITCH 3-18189**

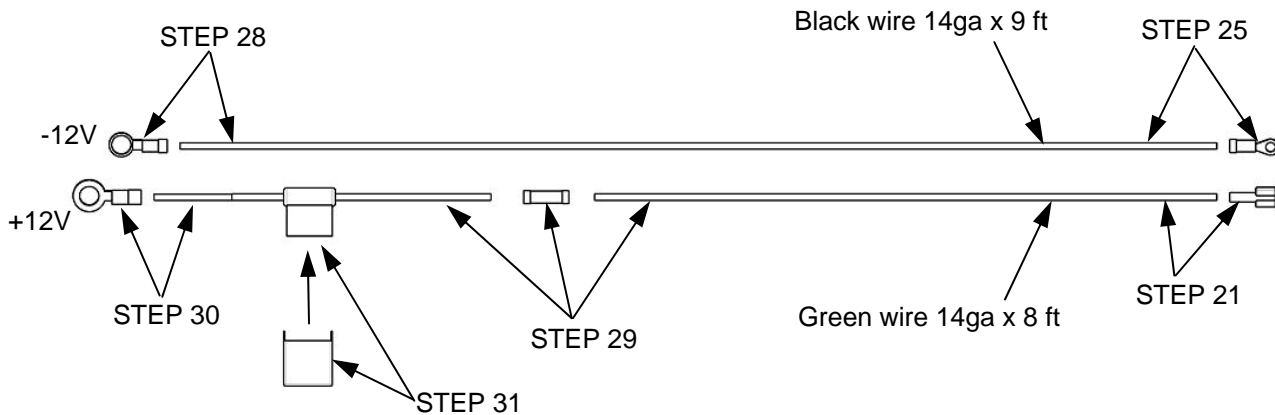
20A MAX AT 12VDC  
TYPICAL SWITCH WIRING

**Figure 3**

15. Secure the wiper blade onto the wiper arm using No. 6 hardware supplied with arm and the additional No.6 flat washer supplied with kit. See figure 1.
16. Turn the wiper switch on and off. Orientate wiper motor shaft so that it stops at the end of rotation.  
Note: If wiper motor fails to run, verify that the toggle switch located on the wiper motor itself is in the upward position, as noted in step 7.
17. Install the wiper arm onto the wiper motor shaft.
18. Adjust the arm length, if required.
19. Turn tractor's ignition key "ON" and turn wiper switch on and off. Check coverage area and adjust if needed.
20. Secure headliner to cab frame and fuse access cover panel to headliner.

## Wiper Kit Installation without headliner (Wire crimping tool required);

21. Attach female blade connector (Item 16) to one end of green wire (Item 13). See Figure 4.
22. Connect green wire with female blade connector to wiper motor blade terminal. See figure 2.
23. Remove (1) 7/8" hole-plug located at the top center of the windshield.
24. Install the wiper motor into front window panel and secure the threaded shaft of the wiper motor using hardware supplied with wiper motor. See figures 1 & 2.
25. Attach 3/16" terminal ring connector (Item 17) to one end of black wire (Item 12).
26. Secure black wire with 3/16" round terminal eye to the slotted end of the wiper motor and front panel using (1) No. 10 x 5/8" long serrated flange screw, (1) No. 10 flat washer, (1) No.10 external tooth lock washer and (1) 10-24unc nylock nut. See figures 1 & 2.
27. Route green and black wire **down the inside of the either front cab frame tube**, to the battery location of tractor.
28. Attach 5/16" terminal ring (Item 18) to remaining end of black wire. Black wire may need to be shortened depending on tractor models and brands. Secure to -12V terminal of battery.
29. Connect fuse link (Item 14) to remaining end of green wire using the blue butt splice connector (Item 15). Green wire may also need to be shortened depending on tractor models and brands.
30. Attach 3/8" terminal ring connector (Item 19) to remaining end of fuse link wire. Secure to +12V terminal of battery.
31. Install 5 amp fuse (Item 11) into fuse holder and attach fuse cover (Item 20) to fuse holder.



**Figure 4**  
**(For use in cabs without headliners, ONLY)**

32. Secure the wiper blade onto the wiper arm using No. 6 hardware supplied with arm and the additional No.6 flat washer supplied with kit. See figure 1.
33. Located the toggle switch on the wiper motor. Turn switch on and off. The wiper motor will run for a period of time and then stop by itself. This will be the parked position. Note coverage angle of shaft so that wiper arm is installed on correct side.
34. Install the wiper arm onto the wiper motor shaft.
35. Adjust the arm length, if required.
36. Turn wiper switch on and off. Check coverage area and adjust if needed.

Manufactured by:  
**CUSTOM PRODUCTS**  
OF LITCHFIELD, INC.  
BOX 70 • LITCHFIELD, MINNESOTA 55355-0070  
(320) 693-3221 Fax: (320) 693-7252  
[www.800cabline.com](http://www.800cabline.com)

05-10801  
February 15, 2010