



## JOHN DEERE 4100, 4110 and 4115 CAB MOUNTING INSTRUCTIONS



**Fits 410 loaders with 2 post non-folding ROPS**

**A-11170**

Manufactured by:



BOX 70 • LITCHFIELD, MINNESOTA 55355  
(320) 693-3221 Fax: (320) 693-7252

[www.800cabline.com](http://www.800cabline.com)



# SAFETY INSTRUCTIONS

Read operator's manual. Be thoroughly familiar with the controls, capabilities, and proper use of the equipment.

NEVER ALLOW ANY RIDERS.

**IMPORTANT:** This cab must only be used on tractors outfitted with a NON-FOLDING ROPS.

**DO NOT** place this cab on a tractor outfitted with a folding ROPS.

**DO NOT** remove the top half of a folding ROPS to accommodate this cab.

Thoroughly inspect cab mounting periodically.

Stay alert for hidden hazards and traffic.

Avoid sudden starts, excessive speeds, and sudden stops when operating on hillside, rough ground and most off-the-road operations.

Use extreme care when working close to fences, ditches, or on hillsides.

Wait for tractor to STOP before dismounting.

Check clearance carefully before driving under any objects.

Avoid operating sideways on a steep slope whenever possible.

ALWAYS buckle safety belt while operating tractor.

Never exceed factory recommended specifications.

**DO NOT** weld, cut, drill or modify ROPS in any manner unless instructed by manufacturer.

# Mounting Instructions

## John Deere 4100, 4110 and 4115

### 1. PREPARATION OF TRACTOR:

- A. Remove grab handles from tractor fenders.
- B. Disconnect battery power.
- C. Remove rear warning lights from roll bar. Attach warning lights to cab using (1) LH #7-15662 and (1) RH #7-15661 dual light mounting brackets. Secure lights to bracket with; (See Figure 1C).
  - (4) 8mm x 25mm cap-screws
  - (4) 5/16" lock washers
- D. Secure brackets to cab, on each side using;
  - (4) 1/4-20unc capscrews
  - (4) 1/4-20unc nyloc nuts
  - (8) 1/4" flat washers
- E. Install Dual Light Wire Extension Kit #8-14639 to route wires into cab and down each side of the interior cab wall. See Figure 1C and 1E.
- F. Remove side engine panels and hood.

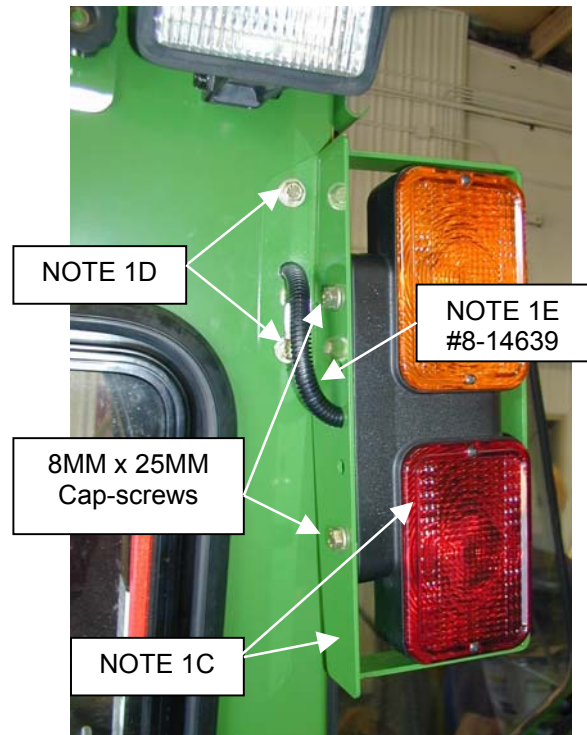


Figure 1C

### 2. INSTALLING THE CAB MOUNT PLATES:

- G. **Note:** Loader brackets must be purchased from John Deere in order to mount the front cab mount plates.
- H. Attach JD Loader Brackets to each side of the tractor frame using and secure with;
  - (6) 10mm x 35mm bolts
  - (6) 7/16" lock washers
  - (4) 7/16-14unc x 1" long bolts
  - (4) 7/16" lock washers
  - (4) 7/16-14unc Nyloc Nuts
 See Figure 2H.

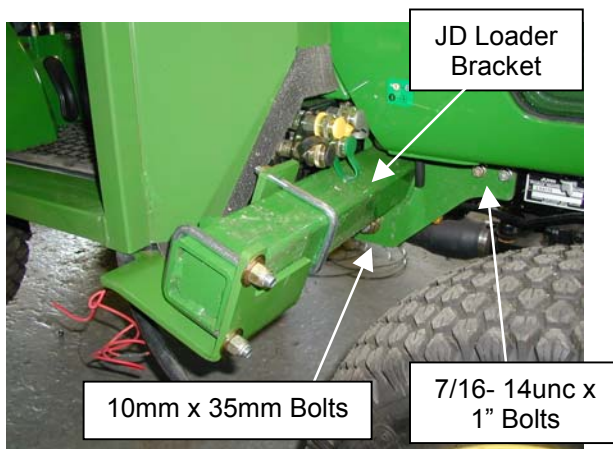


Figure 2H



Figure 1E



## Mounting Instructions John Deere 4100, 4110 and 4115

### 2. MOUNTING THE CAB MOUNT PLATES:

- I. Mounting Front Cab Mount Plates;  
**For 4100 and 4110 models**, attach left mount #6-39308 and right mount #6-39309 to the JD Loader Brackets, just installed in step "H". See Figure 2H.  
**For 4115 models**, attach left mount #6-42584 and right mount #6-42585.
- J. Secure front cab mount plates with;  
 (4) ½-13unc U-bolts  
 (8) ½" flat washers  
 (8) ½-13unc nyloc-nuts.  
 See Figure 2J.
- K. Remove (2) bolts (on each side) from the roll bar mount. See Figure 2K. Install rear mounting bracket #6-39310 on each side of unit. Secure with;  
 (4) 12mm x 50mm bolts  
 (4) ½" flat washers  
 (4) ½" lock washers
- L. Install (4) Rubber isolator bushing in front and rear mounts. **NOTE:** Isolator mounts (#3-16635) with pipe bushing should be inserted from the top side of mount.
- M. Adjust seat forward, tilt and remove hinge pin and seat. Attach rear seal panel assembly #8-14239 using (2) existing holes in the roll bar cross member and secure with;  
 (2) ¼"-20unc x 1" long bolts  
 (2) ¼" flat washers  
 (2) ¼"-20unc Nyloc Nuts  
 See Figure 3M.  
 Some trimming of fabric may be needed to achieve proper fit of rear seal panel. Reinstall seat and seat pivot pin.

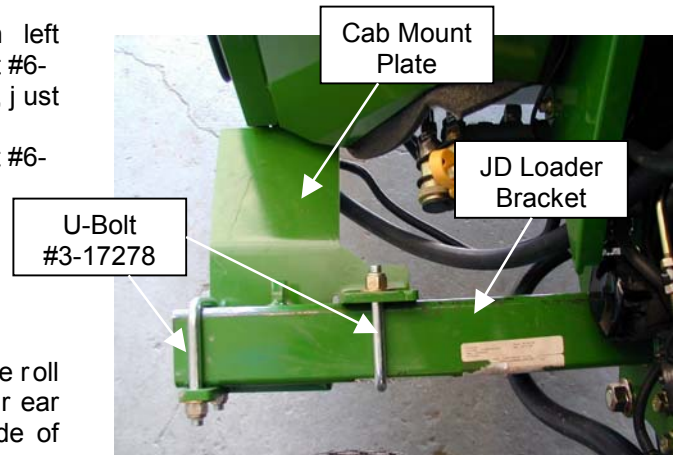


Figure 2J

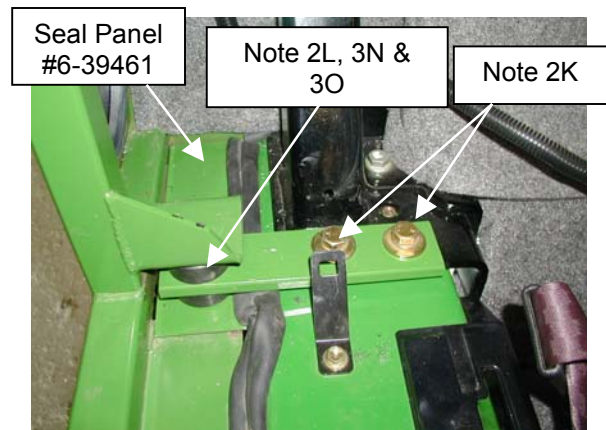


Figure 2K

### 3. INSTALLATION OF CAB

- N. Remove cab from shipping stand. Lower cab over roll bar until cab contacts front and rear isolator bushings. See Figure 2K and 3M.
- O. Secure cab to bushings with;  
 (4) ½-13unc x 3.0" long Bolts  
 (4) ½-13unc Nyloc Nuts  
 (4) ½" Snubbing Washers  
 Seal Panel #6-39461 will be secured from the bottom side of the rubber mount with the fasteners noted above. See Figure 2K.
- P. Install **front hood panel**;  
**For models 4100 and 4115:** #8-14240  
**For model 4110:** #8-14649  
 Secure hood panel with;  
 (2) ¼-20unc x 1" bolts  
 (2) ¼-20unc nylock nuts (See Figure 3P)

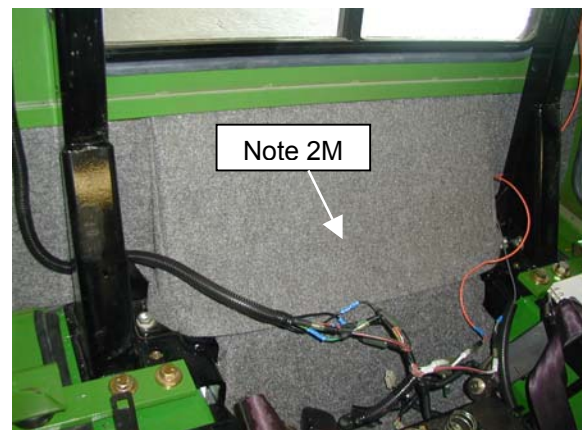


Figure 3M

## Mounting Instructions John Deere 4100, 4110 and 4115

- Q. Install right and left floor mats on each side.
- R. Remove Slow Moving Vehicle sign and bracket from tractor seat. Re-mount sign and bracket using holes located on the back-left side of cab.



Figure 3M

Note 5F



Figure 3P  
(4110 hood shown)

#### **4. ELECTRICAL HOOKUP (All Models)**

- A. Mount #3-17803 Universal Wire Relay Breaker Kit in the engine compartment area. Bracket #6-42329 may be used if room permits. See Figure 4A.
- B. Refer to drawing #3-17803 and #8-14376 for additional electrical connections and details.
- C. Make sure the cab is grounded to frame by installing cab to ground wire #8-14258.



Figure 4A

#### **5. HEATER HOSE HOOKUP (Ref. Drawing #8-14232)**

- A. Drain coolant from radiator and engine block.
- B. Remove temperature sensor from thermostat housing area.
- C. Install aluminum fitting #3-15815 with O-ring washer #3-16823 into the thermostat housing. See Figure 5C.
- D. Re-install temperature sensor into the aluminum fitting just installed (Step 5C).
- E. Install hose to NPT fitting #3-12119 into the side port of the aluminum fitting.
- F. Measure and cut the 5/8" heater hose that routes (Supply Line) from the left (Driver) side of the cab to the thermostat-aluminum-hose nipple fitting. Plastic elbow #3-10282 should be used at the bottom of the cab tubes. See Figure 3M.

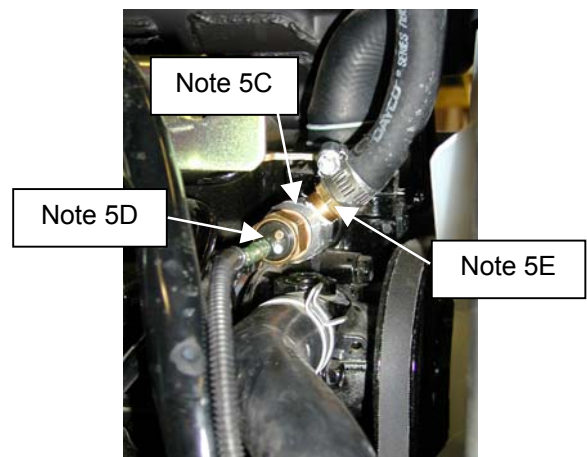


Figure 5C



## John Deere 4100, 4110 and 4115 Mounting Instructions

- G. The lower radiator hose will need to be cut for installation of the lower radiator hose "T" fitting #7-11308. See Figure 5G.
- H. Install 5/8" hose to NPT fitting #3-12119 into the lower radiator hose "T" fitting. See Figure 5G.
- I. Measure and cut the 5/8" heater hose from the right side (Return Line) of the cab with the 90-degree elbow # 3-10282 to the lower radiator hose "T" nipple fitting. See Figure 5G.
- J. Tighten all hose connections with hose clamps.
- K. Re-connect Battery Power.
- L. Refill radiator. Start engine and run at fast idle to purge air from coolant system. Make sure the Heat-Pull Lever is pulled out (Turned On).
- M. Check for leaks.
- N. Check coolant level after heater core and hoses are filled.

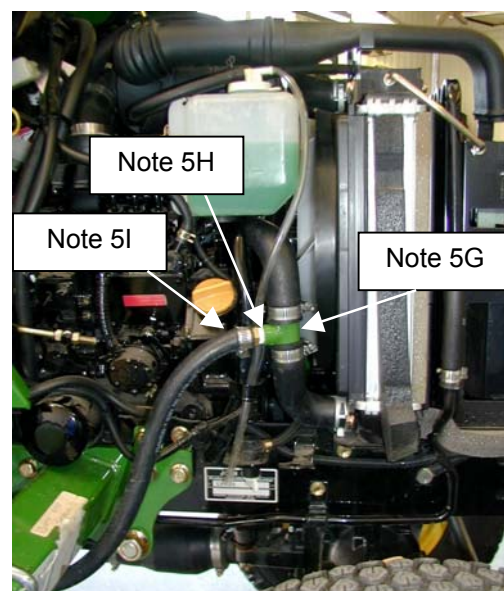


Figure 5G

### **6. ADDITIONAL INSTRUCTIONS (4110 models, ONLY!)**

- A. Since the 4110 hood slightly differs from the 4100 and 4115, the fuel cap lid needs to be modified. Remove 3/4" from the end of the fuel cap lid as shown in Figure 6A.
- B. The 4110 hood also sets back further towards the cab and therefore the hood will not open as far as the other models. Install the shorter hood rod #7-15714 to prevent the hood from contacting the cab. See Figure 6B.

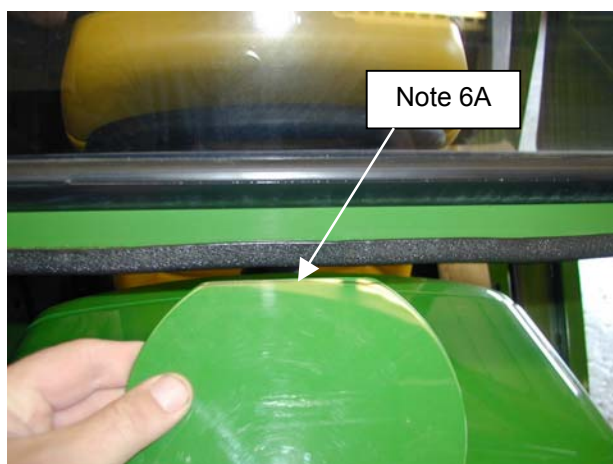


Figure 6A  
(4110 Models ONLY)

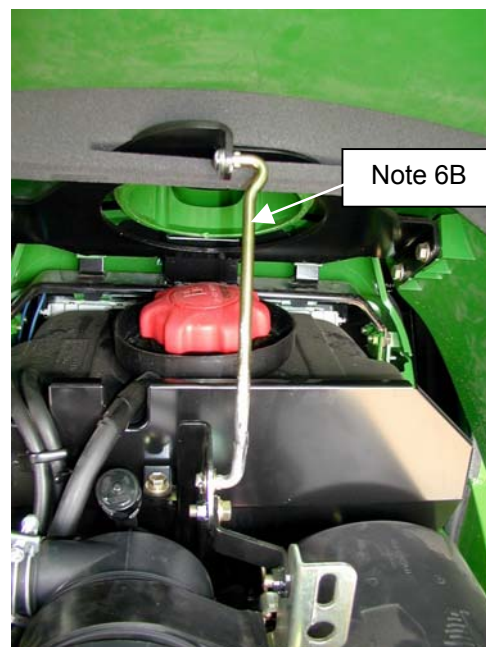


Figure 6B  
(4110 Models ONLY)

### **7. VERTICAL EXHAUST KIT**

- A. For applications that require a high exhaust system, over the head of the operator, a vertical exhaust kit is available through your local John Deere dealer.

# **John Deere 4100, 4110 and 4115 Mounting Instructions**

## **Drawing Index**

8-14172	CAB ASSEMBLY
8-14173	DOOR ASSEMBLY RIGHT
8-14174	DOOR ASSEMBLY LEFT
8-14630	HEADLINER ASSEMBLY
8-14176	MOUNT KIT -COMMON
8-14241	MOUNT KIT FOR 4100
8-14647	MOUNT KIT FOR 4110
8-14648	MOUNT KIT FOR 4115
8-14232	HEATER KIT
8-14376	ELECTRICAL SCHEMATIC
3-17803	WIRE RELAY BREAKER HARNESS
8-14639	WIRE EXTENSION FOR DUAL LIGHTS

John Deere 4100, 4110 and 4115  
A-11170 Replacement Parts

**8-14172 Cab Assembly**

<u>ITEM</u>	<u>QTY</u>	<u>PART NO.</u>	<u>DESCRIPTION</u>
1	1	7-15074	Cab Weldment
2	4	3-15917	Right Upper Door Glass
3	1	8-14173	Right Door Assembly
4	1	8-14174	Left Door Assembly
5	1	8-14630	Headliner Assembly
6	2	3-10166	.437 Flat Washer
7	2	3-10472	.437-14 Nyloc Hex Nut
8	1	3-15944	Filter, 2.19 x 3" x 20.88"
9	2	3-15407	Striker Stud & Washer
10	1	6-37535	Air Filter Cover
11	1	3-11099	Wiper Motor
12	1	3-15776	Wiper Arm
13	1	3-15763	Wiper Blade
14	10 FT	3-10649	Window Rubber
15	2 FT	3-10649	Window Rubber, 2 FT
16	9 FT	3-10649	Window Rubber
17	7 FT	3-10649	Window Rubber
18	7 FT	3-10649	Window Rubber
19	2	3-17176	Side Rear Glass
20	2	3-17177	Lower Front Glass
21	1	3-17173	Front Windshield Glass
22	1	3-16652	Rear Sliding Window Assembly
23	1	6-39855	Rear Headliner Insulation
24	1	6-39856	Right Rear Side Headliner Insulation
25	1	6-39857	Left Rear Side Headliner Insulation
26	1	6-39859	Top Rear Panel Insulation
27	1	6-39860	Bottom Center Rear Insulation
28	1	6-39861	Left Rear Bottom Insulation
29	1	6-39862	Bottom Right Rear Insulation
30	1	6-39864	Lower Left Front Insulation
31	1	6-39865	Lower Right Front Insulation
32	1	7-15208	Roof Weldment
33	2	3-15573	Black Plastic Knob
34	2	6-20618	Lifting Ear
35	2	3-10087	.500 Flat Washer
36	2	3-10079	.500 Lock Washer
37	2	3-10129	Hex-Head Bolt, 1/2-13 NC X 1" Long, Grd 5
38	2	3-10077	.312 Lock Washer
39	2	3-11821	Gas Spring Ball Stud
40	2	3-13024	6" Stroke Gas Spring
41	2	3-10135	Machine Screw, #10-24 X 1.00 TH SL

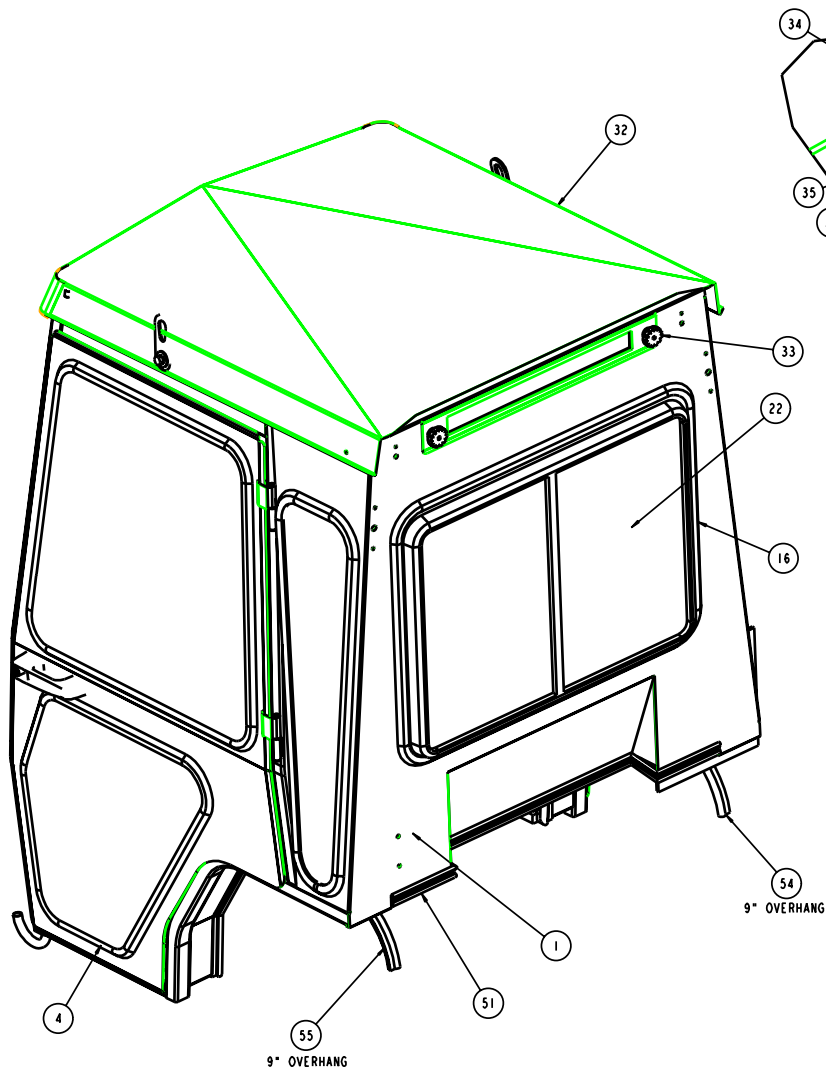


John Deere 4100, 4110 and 4115  
A-11170 Replacement Parts

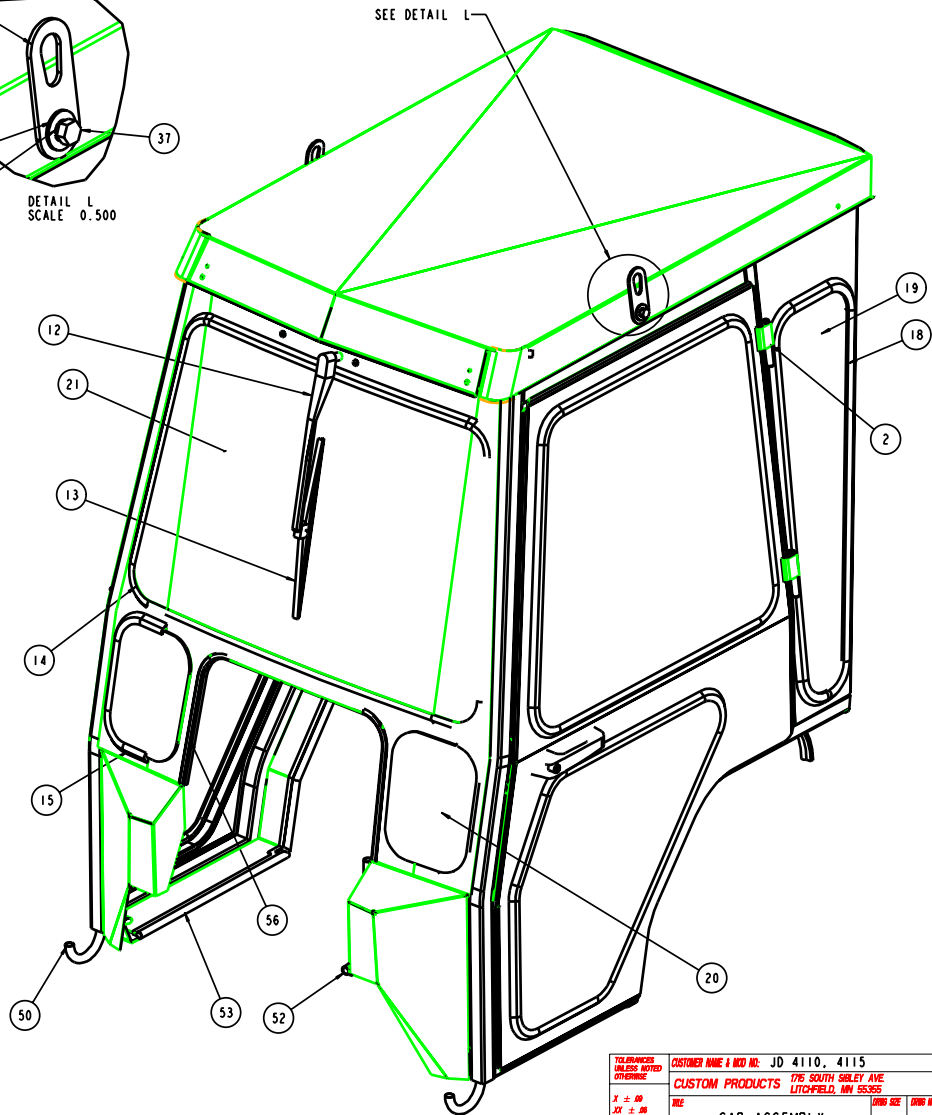
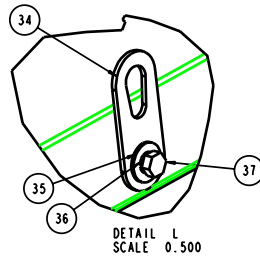
**8-14172 Cab Assembly (Continued)**

<u>ITEM</u>	<u>QTY</u>	<u>PART NO.</u>	<u>DESCRIPTION</u>
42	2	3-10083	.187 Flat Washer
43	2	3-10308	Nyloc Hex Nut, #10-24 NC
44	4	3-14387	.25-20 NC Nut Sert
45	4	3-10076	.250 Lock Washer
46	4	3-10220	Hex-Head Bolt, 1/4-20 NC X 1" Long, Grd 5
47	2	3-10282	Plastic Elbow
48	3	3-10858	#10 Hose Clamp
49	4 FT	3-11264	Sponge Polyfoam
50	2	3-11172	Heater Hose
51	1	3-10610	Seal Rubber, Clip-on Bubble, 180 Degrees
52	1	3-15952	Seal Rubber, 3/4" OD Bubble, Up TO 1/8" Material
53	1	3-15952	Seal Rubber, 3/4" OD Bubble, Up TO 1/8" Material
54	1	3-10610	Seal Rubber, Clip-on Bubble, 180 Degrees
55	1	3-10610	Seal Rubber, Clip-on Bubble, 180 Degrees
56	1	3-12138	Trim Seal, 7/16 OD Bubble, 1/8 Mat

REV.	DCR NO.	DESCRIPTION	DRAFTSMAN	DATE
------	---------	-------------	-----------	------

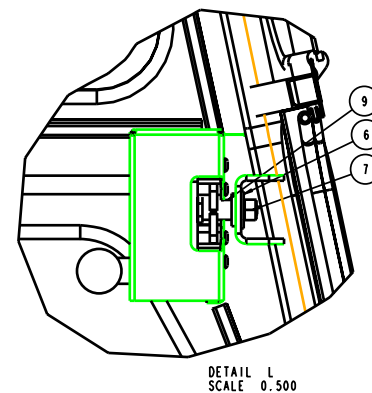
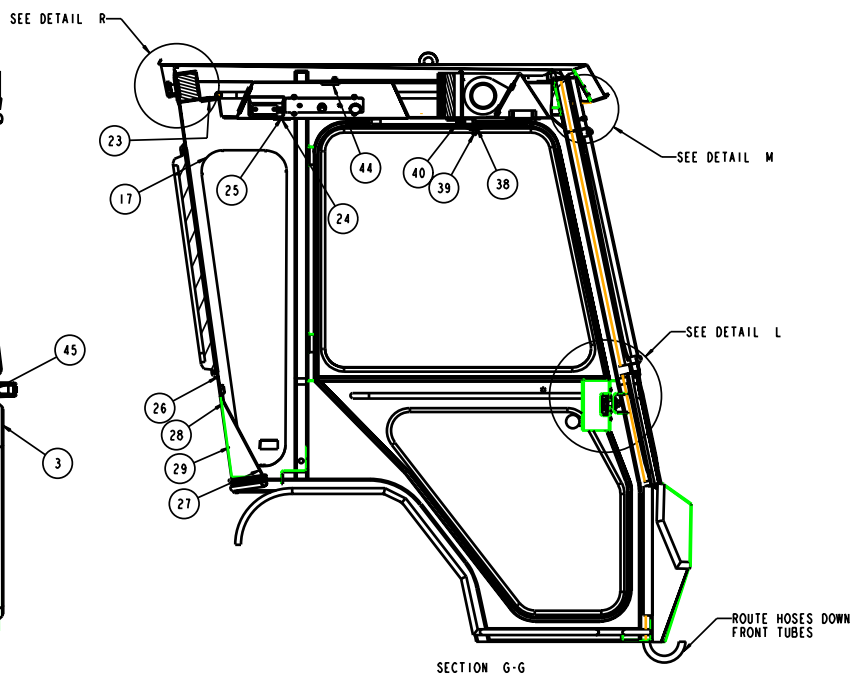
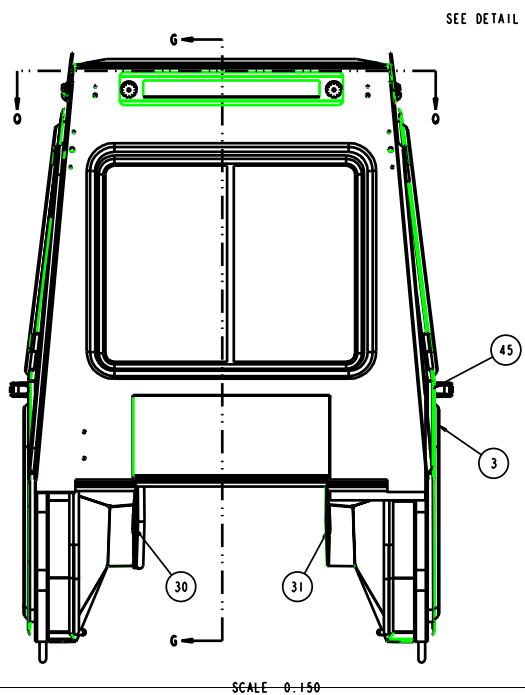
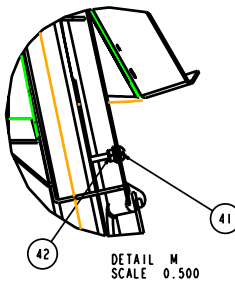
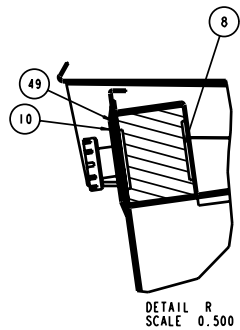
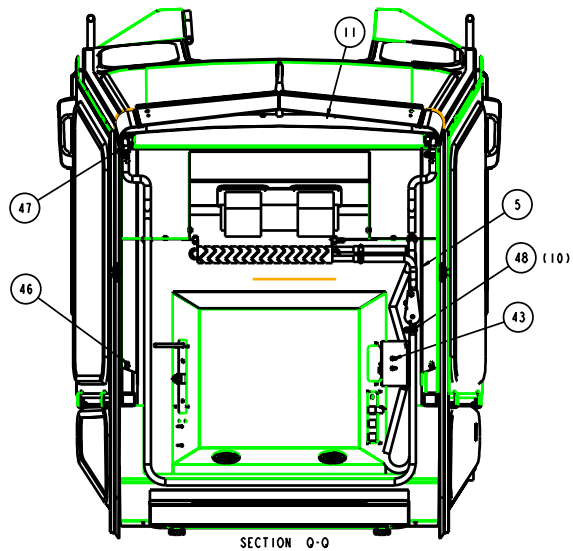


SCALE 0.200



SCALE 0.200

<b>TOLERANCES UNLESS NOTED OTHERWISE</b> 3" ± .00 1/2" ± .00 JOCK ± .00 HOLE SIZE H/2" ± .00 ANGLE ± 5°	CUSTOMER NAME & MFG NO. JD 4110, 4115		MFG. SPEC.	
	CUSTOMER PRODUCTS		576 SOUTH GALEY AVE LITCHFIELD, MN 55355	
	D		8-14172	REV. LEVEL
	CAB ASSEMBLY TOP LEVEL		SHEET 1 of 2	DATE 7-11-02



REV.	DCR NO.	DESCRIPTION	DRAFTSMAN	DATE
------	---------	-------------	-----------	------

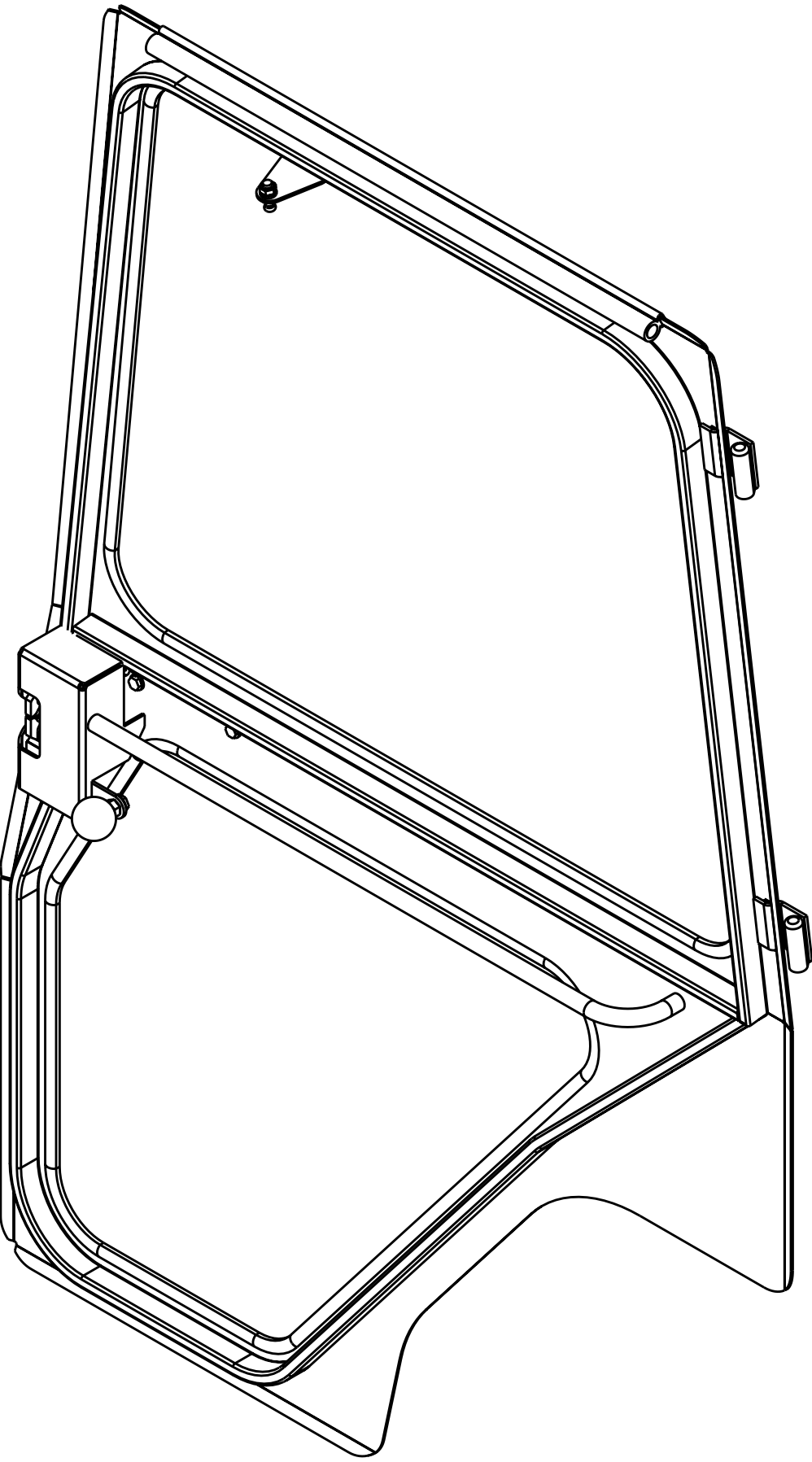
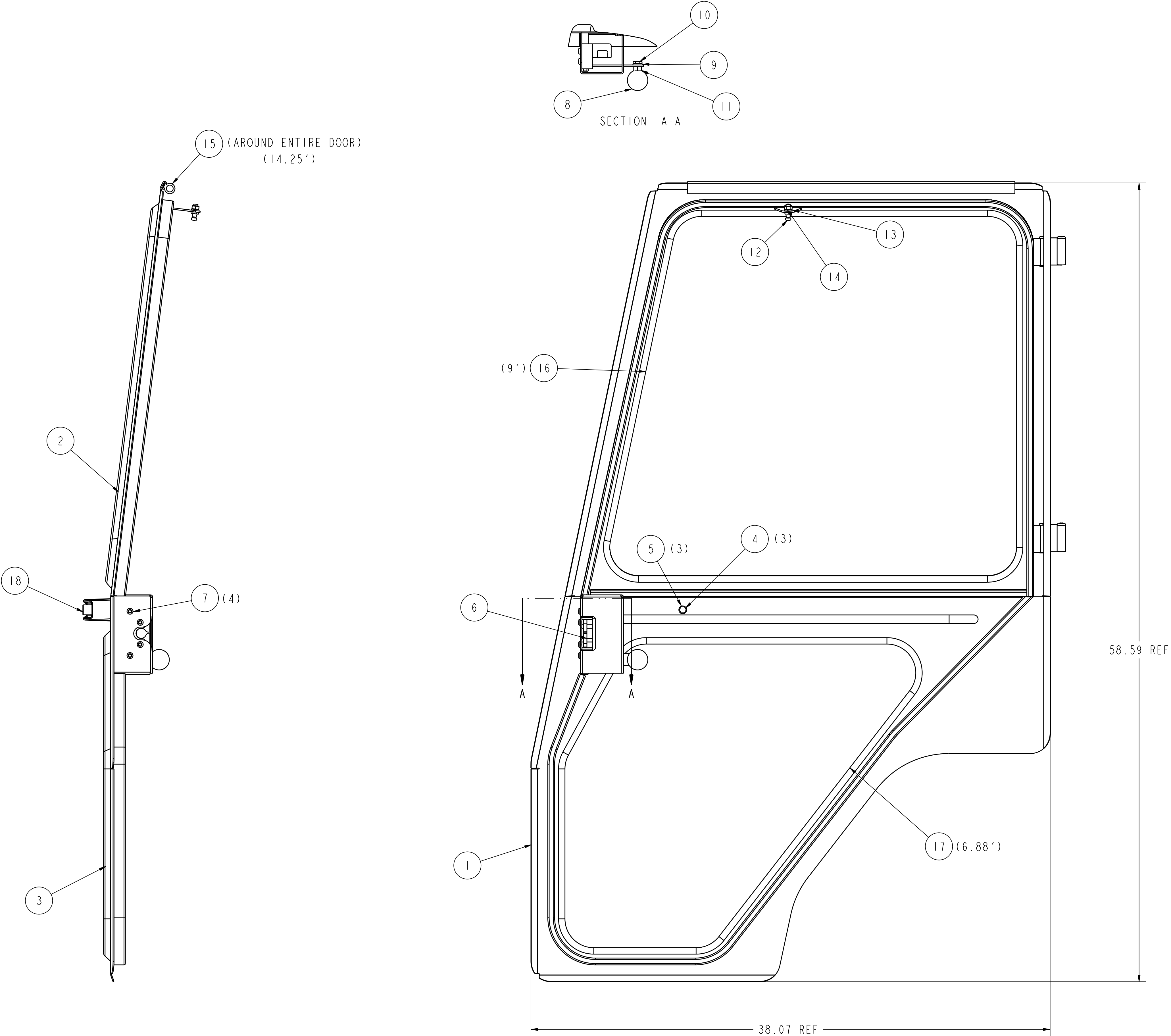
TOLERANCES UNLESS NOTED OTHERWISE X ± .00 XX ± .01 XXX ± .02 HOLE SIZE H/4H ANGLE ± 5°	CUSTOMER NAME & ADDR. JD4110 AND 4115		DATE SPEC.	
	CUSTOM PRODUCTS 176 SOUTH GALEY AVE			
	LITTONFIELD, MN 55355			
	CAB ASSEMBLY		8-14172	
TOP LEVEL		SHEET 2 of 2		REV LEVEL
DWM CAD		DATE 7-11-02		

John Deere 4100, 4110 and 4115  
A-11170 Replacement Parts

**Right Door Assembly 8-14173**

<u>ITEM</u>	<u>QTY</u>	<u>PART NO.</u>	<u>DESCRIPTION</u>
1	1	7-15075	Right Door Weldment
2	1	3-17178	Upper Door Glass
3	1	3-17179	Lower Door Glass
4	3	3-12692	Hex-Head Bolt, M6-15 x 1" Long, Gr 8.8
5	3	3-10076	.250 Lock Washer
6	1	3-15640	Latch, Rotary
7	4	3-10106	.250-20 NC X .630 Machine Screw
8	1	3-14231	Knob
9	1	3-10078	.375 Lock Washer
10	1	3-10147	.375-16 NC x 1.00 Hex Head Cap Screw
11	1	3-10065	.375-16 NC Hex Nut
12	1	3-11821	Ball Stud
13	1	3-10077	.312 Lock Washer
14	1	3-10064	.312-18 NC Hex Nut
15	14.3 FT	3-15952	Trim Seal 90 degree bubble
16	9.0 FT	3-10649	Window Rubber, Upper Right
17	6.9 FT	3-10649	Window Rubber, Lower Right
18	1	3-15574	Handle, Exterior





SCALE 0.188

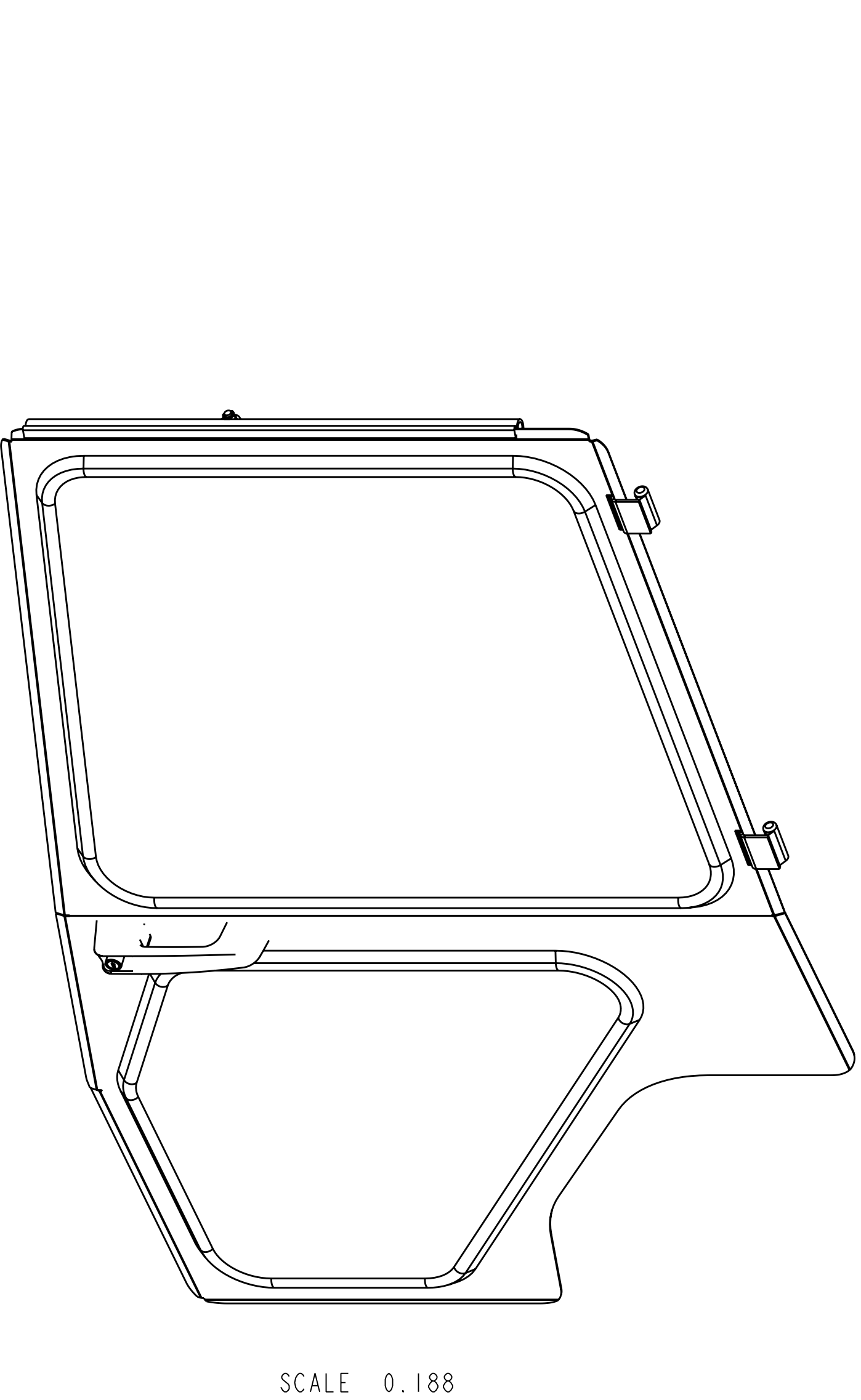
SCALE 0.250

TOLERANCES UNLESS NOTED OTHERWISE	CUSTOMER NAME & MOD NO: JD 4100		MATERIAL SPEC:	
	CUSTOM PRODUCTS 1715 SOUTH SIBLEY AVE. LITCHFIELD, MN 55355			
	TITLE	DRWG SIZE	DRWG NO.	REV LEVEL
	ASSEMBLY, DOOR RIGHT SIDE	D	8-14173	
X ± .09 XX ± .06 XXX ± .03 HOLE SIZE /06/00 ANGLE ± 5°	DRAWN: SLE		DATE 11-10-98	

John Deere 4100, 4110 and 4115  
A-11170 Replacement Parts

**Left Door Assembly 8-14174**

<u>ITEM</u>	<u>QTY</u>	<u>PART NO.</u>	<u>DESCRIPTION</u>
1	1	7-15076	Left Door Weldment
2	1	3-15567	Latch, Rotary
3	1	3-17178	Upper Door Glass
4	1	3-17179	Lower Door Glass
5	1	3-11821	Ball Stud
6	1	3-10077	.312 Lock Washer
7	1	3-10064	.312-18 NC Hex Nut
8	4	3-10106	.250-20 NC X .630 Machine Screw
9	1	3-10147	.375-16 NC x 1.00 Hex-Head Cap Screw
10	1	3-10078	.375 Lock Washer
11	1	3-10065	.375-16 NC Hex Nut
12	1	3-14231	Knob
13	3	3-10076	.250 Lock Washer
14	3	3-12692	M6 x 1.00 Hex-Head Cap Screw
15	9.0 FT	3-10649	Window Rubber, Upper Left
16	6.9 FT	3-10649	Window Rubber, Lower Left
17	14.3 FT	3-15952	Seal Rubber, 3/4" OD Bubble, Up to 1/8" Material
18	1	3-15574	Handle, Exterior



		SCALE 0.250	
TOLERANCES UNLESS NOTED OTHERWISE	CUSTOMER NAME & MOD NO: JD 4100		MATL SPEC:
	CUSTOM PRODUCTS 1715 SOUTH SIBLEY AVE LITCHFIELD, MN 55355		
	TITLE	DRWG SIZE	DRWG NO.
		D	8-14174
XX ± .09 XX ± .06 XXX ± .03 HOLE SIZE (05/00) ANGLE ± 5°	ASSEMBLY, DOOR LEFT SIDE	REV LEVEL	
		DRAWN: SLE DATE 11/10/98	

X ± .09	XX ± .06	XXX ± .03	HOLE SIZE	ANGLE ± 5°
---------	----------	-----------	-----------	------------

SCALE 0.250
-------------

SCALE 0.188
-------------

SECTION A-A
-------------

17 (AROUND ENTIRE DOOR) (14.25')
-------------------------------------

18
----

3
---

4
---

5
---

6
---

7
---

8 (4)
-------

9
---

10
----

11
----

12
----

13 (3)
--------

14 (3)
--------

15 (9')
---------

16 (6.88')
------------

1
---

2
---

38.10 REF
-----------

58.59 REF
-----------

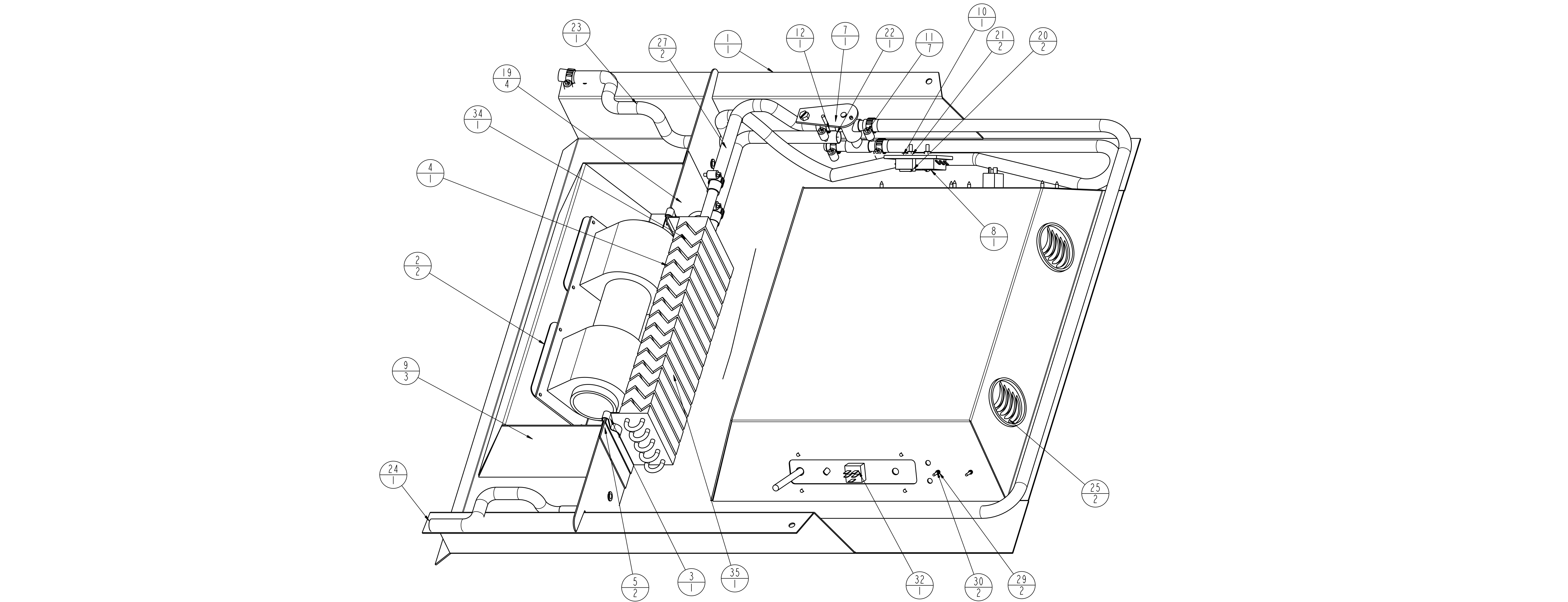
Page 15
---------

John Deere 4100, 4110 and 4115  
A-11170 Replacement Parts

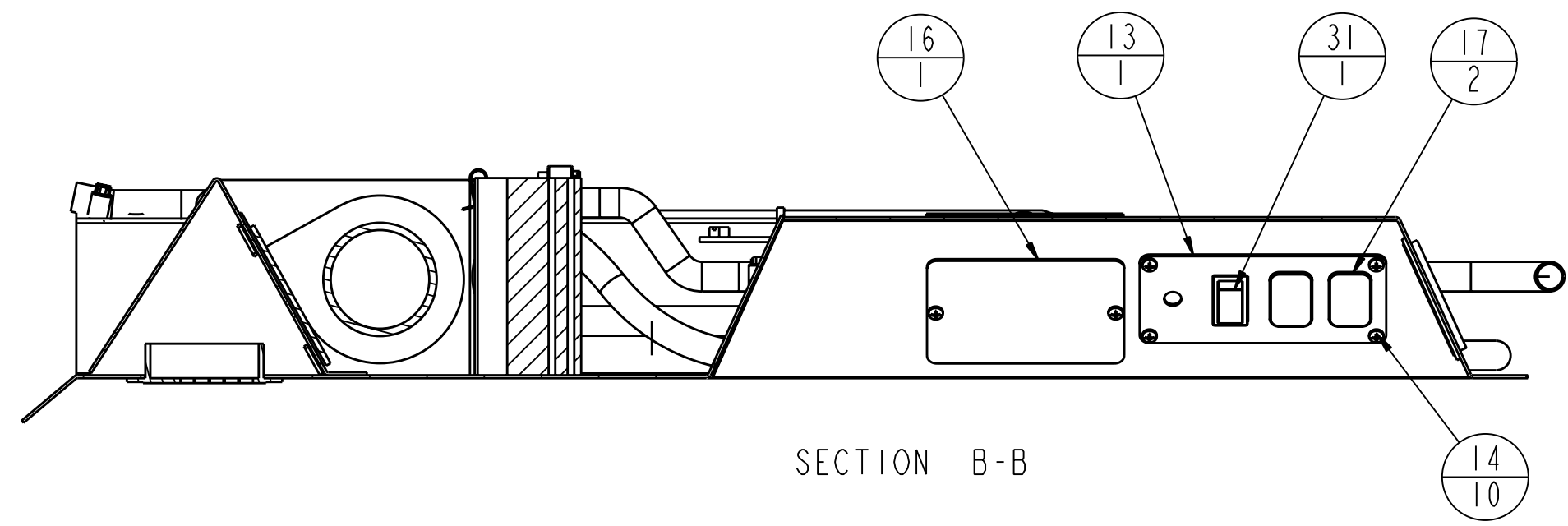
**Headliner Assembly 8-14630**

<u>ITEM</u>	<u>QTY</u>	<u>PART NO.</u>	<u>DESCRIPTION</u>
1	1	7-15105	Headliner weldment
2	2	3-11202	Blower Gasket
3	1	3-15935	Dual Wheel Blower
4	1	3-16572	Heater Core
5	2	3-16672	Heater Core Flange Frame Clip
6	1	3-16232	Dome light, 12V
7	1	3-16692	Heater Temp. Control Valve
8	1	3-16033	Fuse Block
9	3	3-15594	Round Louver
10	1	3-16580	ATO/ATC Fuse, 30 AMP
11	7	3-10858	#10 Hose Clamp
12	1 FT	3-11172	Heater Hose
13	1	6-37263	Wiper & Lights Switch Plate
14	10	3-11812	Self tap Screw, #10 x 6.25
15	1	6-37482	Switch Mounting Plate
16	1	6-36057	Fuse Cover
17	2	3-16677	Rocker Switch Hole Plug
18	1	6-39854	Center Headliner Insulation
19	4	3-10729	Snap Bushing Grommet
20	2	3-10099	Machine Screw, #10-24 NC X 1.50
21	2	3-10308	Nyloc Hex Nut, #10-24 NC
22	1 FT	3-11172	Heater Hose
23	5 FT	3-11172	Heater Hose
24	7 FT	3-11172	Heater Hose
25	2	3-15928	Black Round Louver
26	1	3-11149	Heater Control Assembly Cable
27	2	3-11738	Grommet, 1.125 Dia. MTG Hole
28	2	3-16984	Machine Screw, #6-32 NC X 1.50 RH SL
29	2	3-12637	Hex Nut, #6-32 NC
30	2	3-12638	Washer, #6 Lock
31	1	3-16274	Rocker Switch
32	1	3-15432	Rotary Switch
33	1	3-11173	Blower Switch Knob
34	1	3-11741	Plug, Hole, Plastic, .750 Dia.
35	1	6-39858	Front Headliner Insulation

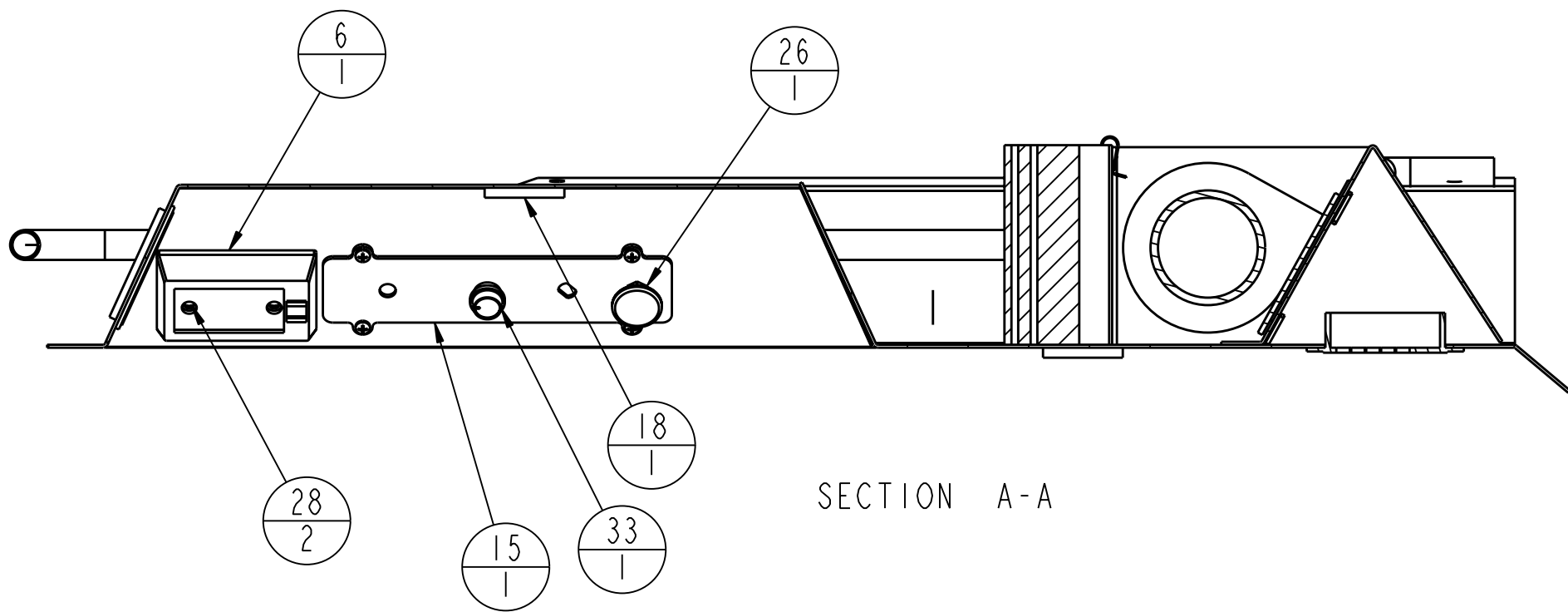
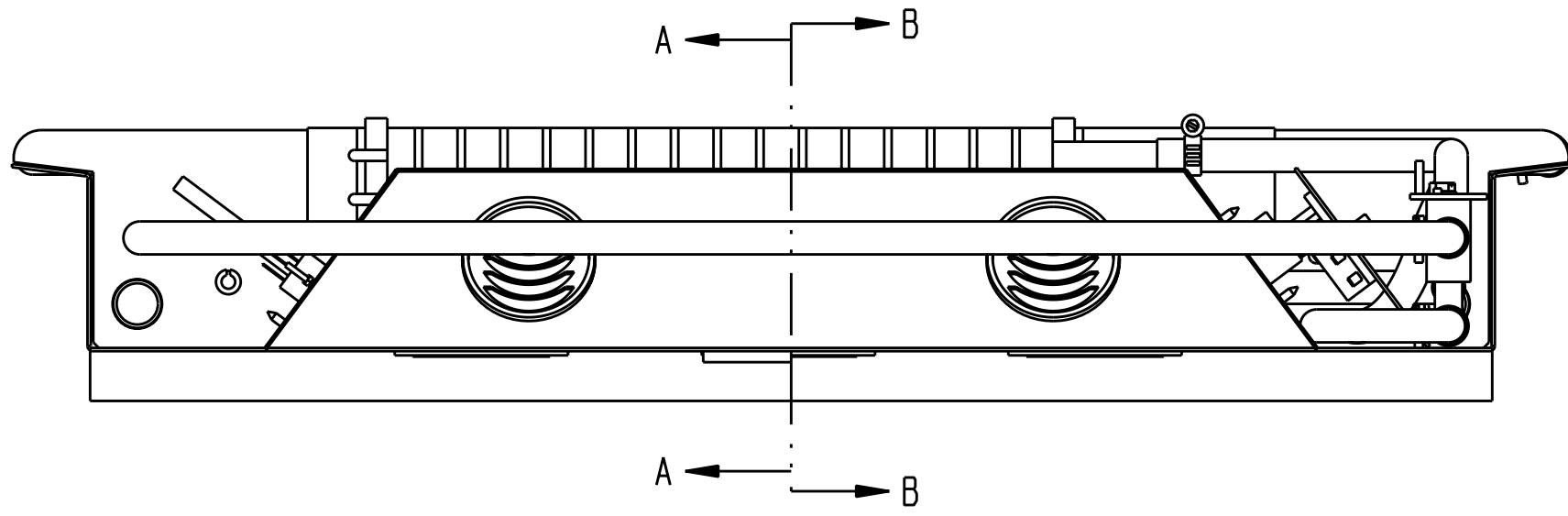




SCALE 0.333



SECTION B-B



SECTION A-A

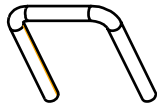
TOLERANCES UNLESS NOTED OTHERWISE	CUSTOMER NAME & MOD NO: JD 4100		MATL. SPEC:		
	CUSTOM PRODUCTS 1715 SOUTH SIBLEY AVE LITCHFIELD, MN 55355				
X ± .09 XX ± .06 XXX ± .03 HOLE SIZE /06/00 ANGLE ± 5°	TITLE		DRWG. SIZE	DRWG. NO.	REV. LEVEL
	HEADLINER ASSEMBLY		D	8-14630	
			DRAWN: CAD DATE 7-2-02		

John Deere 4100, 4110 and 4115  
A-11170 Replacement Parts

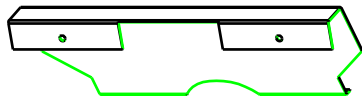
**Mount Kit -Common 8-14176**

<u>ITEM</u>	<u>QTY</u>	<u>PART NO.</u>	<u>DESCRIPTION</u>
1	2	6-39310	Rear Mount
2	2	6-39461	Rear Mount Seal
3	1	3-17871	Left Floor mat
4	1	3-17872	Right Floor mat
5	1	3-10002	Hex-Head Bolt, 1/4-20 NC X 5/8" Long, Grd 5
6	3	3-10070	Nyloc Hex Nut, .250-20 NC
7	4	3-10077	.312 Hel Spring Lock Washer
8	6	3-10079	.500 Hel Spring Lock Washer
9	2	3-10084	.250 Flat Washer
10	12	3-10087	.500 Flat Washer
11	4	3-10123	Hex-Head Bolt, M8-25 X 1-1/4" Long, Grd 8.8
12	4	3-10131	Hex-Head Bolt, .50-1 3 NC x 3.00, Grade 5
13	4	3-10220	Hex-Head Bolt, 1/4-20 NC X 1" Long, Grd 5
14	12	3-10379	Nyloc Hex Nut, .50-113 NC
15	4	3-13295	Hex-Head Bolt M 12 x 30 x 1.75 C 933 C 10.9
16	4	3-16635	Rubber Mount
17	1	05-10324	Mounting Instructions
18	4	3-16636	Snubbing Washer 1/2"
19	1	8-14232	Heater Hook Up Kit
20	1	8-14239	Rear Seal Panel Asy
21	3	3-11812	Self tap screw
22	1	6-39863	Insulation
23	4 FT	3-15068	Seal Rubber, 3/8" OD Bubble, Up to 1/8" Material
24	1	6-42329	Relay Breaker Mount
25	4	3-17278	U-Bolt, 1/2-13unc
26	2	8-14639	Dual light wire extension kit
27	1	3-17803	Universal wire breaker relay harness
28	1	7-15661	LH Dual Light Mount
29	1	7-15662	RH Dual Light Mount

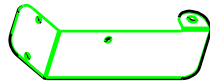
REV.	DCR NO.	DESCRIPTION	DRAFTSMAN	DATE
A	-	COMMON MOUNT KIT PARTS 4100-4115	CAD	8-21-02



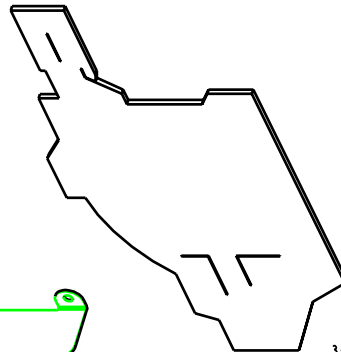
3-17278  
U-BOLT 1/2-13UNC  
(4) REQ'D PER CAB



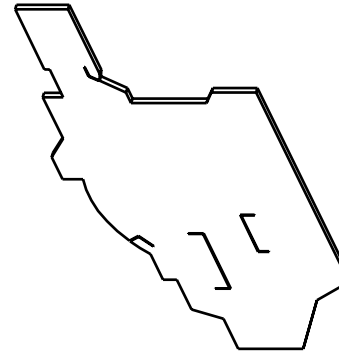
8-14239  
REAR SEAL PANEL ASY  
(1) REQ'D PER CAB



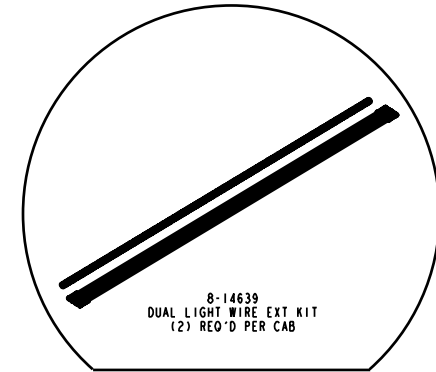
6-42329  
RELAY-BREAKER MOUNT  
(1) REQ'D (USED ON 4115 CAB)



3-17871  
FLOOR MAT LH  
(1) REQ'D PER CAB



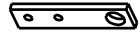
3-17872  
FLOOR MAT RH  
(1) REQ'D PER CAB



8-14639  
DUAL LIGHT WIRE EXT KIT  
(2) REQ'D PER CAB



3-16635  
RUBBER MOUNT  
(4) REQ'D PER CAB



6-39310  
REAR MOUNT  
(2) REQ'D PER CAB



6-39461  
REAR MOUNT SEAL  
(2) REQ'D PER CAB



3-10077  
LOCK WASHER 5/16"  
(4) REQ'D PER CAB



3-10379  
NYLOC HEX NUT  
1/2-13UNC  
(12) REQ'D PER CAB



3-10079  
LOCK WASHER 1/2"  
(6) REQ'D PER CAB



3-10084  
FLAT WASHER 1/4"  
(2) REQ'D PER CAB



3-16636  
SNUBBING WASHER 1/2"  
(4) REQ'D PER CAB



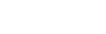
3-10087  
FLAT WASHER 1/2"  
(12) REQ'D PER CAB



3-10123  
HEX HEAD CAP SCREW  
M8 x 25MM x 1.25 GR 8.8  
(4) REQ'D PER CAB



3-10070  
NYLOC HEX NUT  
1/4-20UNC  
(3) REQ'D PER CAB



3-10082  
HEX HEAD CAP SCREW  
1/4-20UNC x 5/8" LG  
(1) REQ'D PER CAB



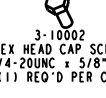
3-10131  
HEX HEAD CAP SCREW  
1/2-13UNC x 3.00 LG  
(4) REQ'D PER CAB



3-13295  
HEX HEAD CAP SCREW  
M12 x 30MM 1.75 GR 10.9  
(4) REQ'D PER CAB



3-10220  
HEX HEAD CAP SCREW  
3/8-16UNC x 1.00 LG GR 5  
(4) REQ'D PER CAB



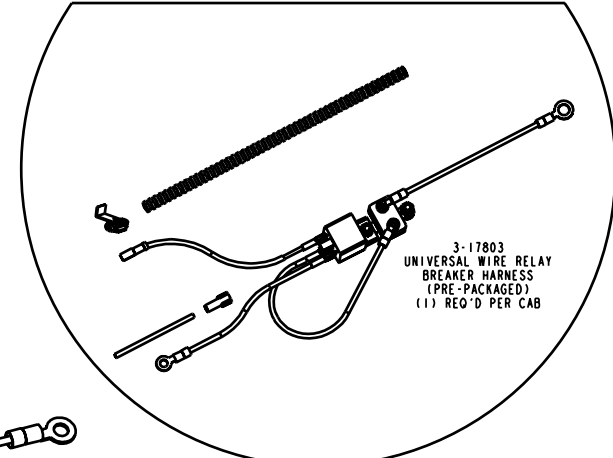
7-15662  
RH DUAL LIGHT MOUNT BRKT  
(1) REQ'D PER CAB



7-15661  
LH DUAL LIGHT MOUNT BRKT  
(1) REQ'D PER CAB



8-14258  
CAB TO GROUND WIRE ASSEMBLY  
(1) REQ'D PER CAB



3-17803  
UNIVERSAL WIRE RELAY  
BREAKER HARNESS  
(PRE-PACKAGED)  
(1) REQ'D PER CAB

#### NOT SHOWN ITEMS LIST

ITEM	QTY	DESCRIPTION
19	1 EA	05-10324 INSTRUCTION MANUAL AUGUST 2002
21	1 EA	8-14232 HEATER HOOKUP KIT
33	1 EA	6-39863 POLYFOAM
34	4 FT	3-15068 TRIM SEAL

MOUNT KIT CROSS REFERENCE NOTES:  
MODEL 4100 - MOUNT KIT #8-14241  
MODEL 4110 - MOUNT KIT #8-14647  
MODEL 4115 - MOUNT KIT #8-14648

ALL MODELS REQUIRE LOADER MOUNTS PURCHASED  
DIRECT FROM JOHN DEERE

TOLERANCES UNLESS NOTED OTHERWISE		THIS DOCUMENT CONTAINS CONFIDENTIAL INFORMATION AND IS THE PROPERTY OF CUSTOM PRODUCTS OF LITCOFIELD, INC. AND MAY NOT BE COPIED, REPRODUCED OR DISCLOSED IN ANY MANNER WITHOUT EXPRESS WRITTEN CONSENT FROM CUSTOM PRODUCTS OF LITCOFIELD, INC.	
CUSTOMER NAME & MAILING ADDRESS		MAIL STOP	
CUSTOMER NAME & MAILING ADDRESS		MAIL STOP	
CUSTOMER NAME & MAILING ADDRESS		MAIL STOP	
CUSTOMER NAME & MAILING ADDRESS		MAIL STOP	
CUSTOMER NAME & MAILING ADDRESS		MAIL STOP	
CUSTOMER NAME & MAILING ADDRESS		MAIL STOP	
CUSTOMER NAME & MAILING ADDRESS		MAIL STOP	
CUSTOMER NAME & MAILING ADDRESS		MAIL STOP	
CUSTOMER NAME & MAILING ADDRESS		MAIL STOP	

John Deere 4100, 4110 and 4115  
A-11170 Replacement Parts

**Replacement Parts List**  
**Mount Kit for 4100**  
**8-14241**

<u>ITEM</u>	<u>QTY</u>	<u>PART NO.</u>	<u>DESCRIPTION</u>
1	1	6-42584	Left Front Mount Plate 4100 and 4110
2	1	6-42585	Right Front Mount Plate 4100 and 4110
3	1	8-14240	Hood Panel for 4100 and 4115

**Replacement Parts List**  
**Mount Kit for 4110**  
**8-14647**

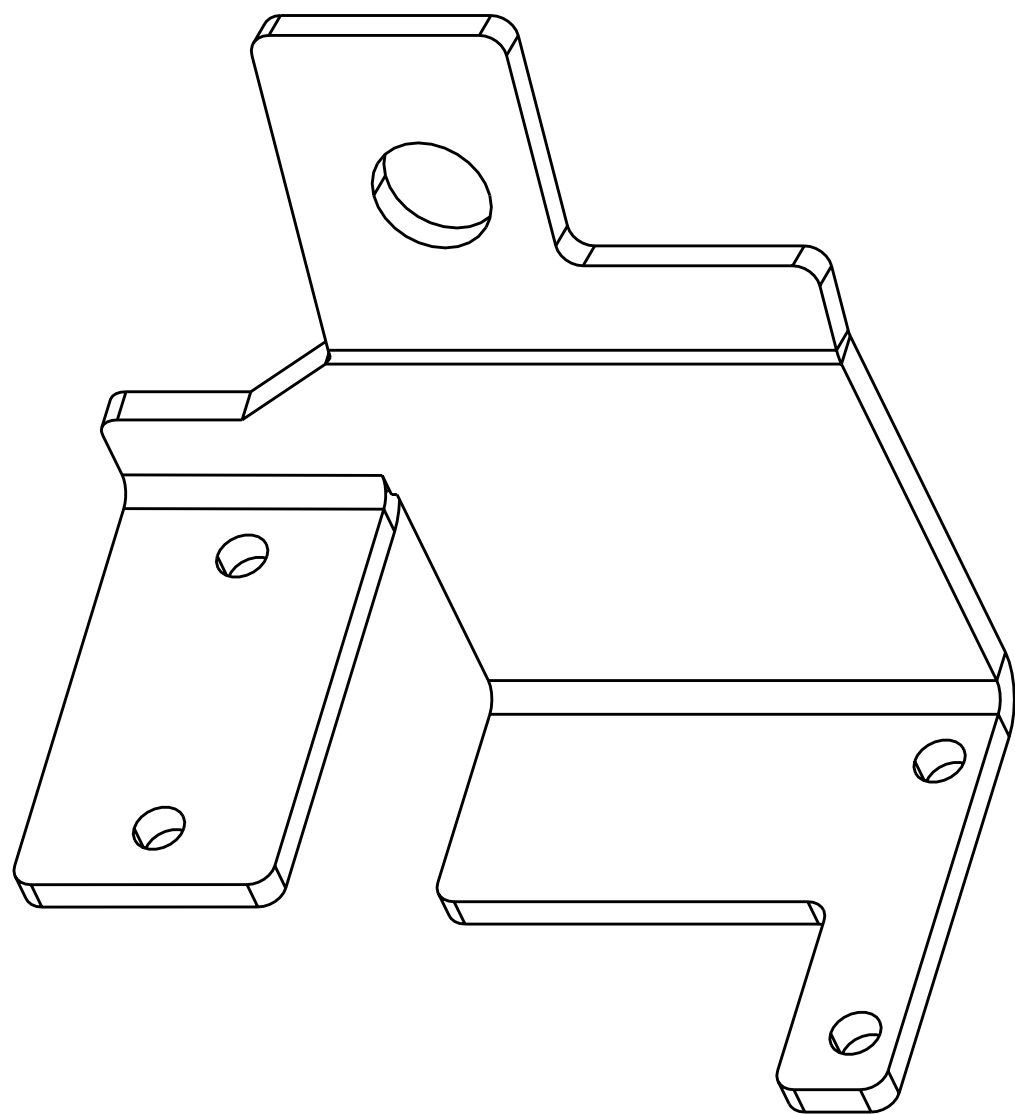
<u>ITEM</u>	<u>QTY</u>	<u>PART NO.</u>	<u>DESCRIPTION</u>
1	1	6-42584	Left Front Mount 4100 and 4110
2	1	6-42585	Right Front Mount 4100 and 4110
3	1	8-14649	Hood Panel for 4110 -ONLY

**Replacement Parts List**  
**Mount Kit for 4115**  
**8-14648**

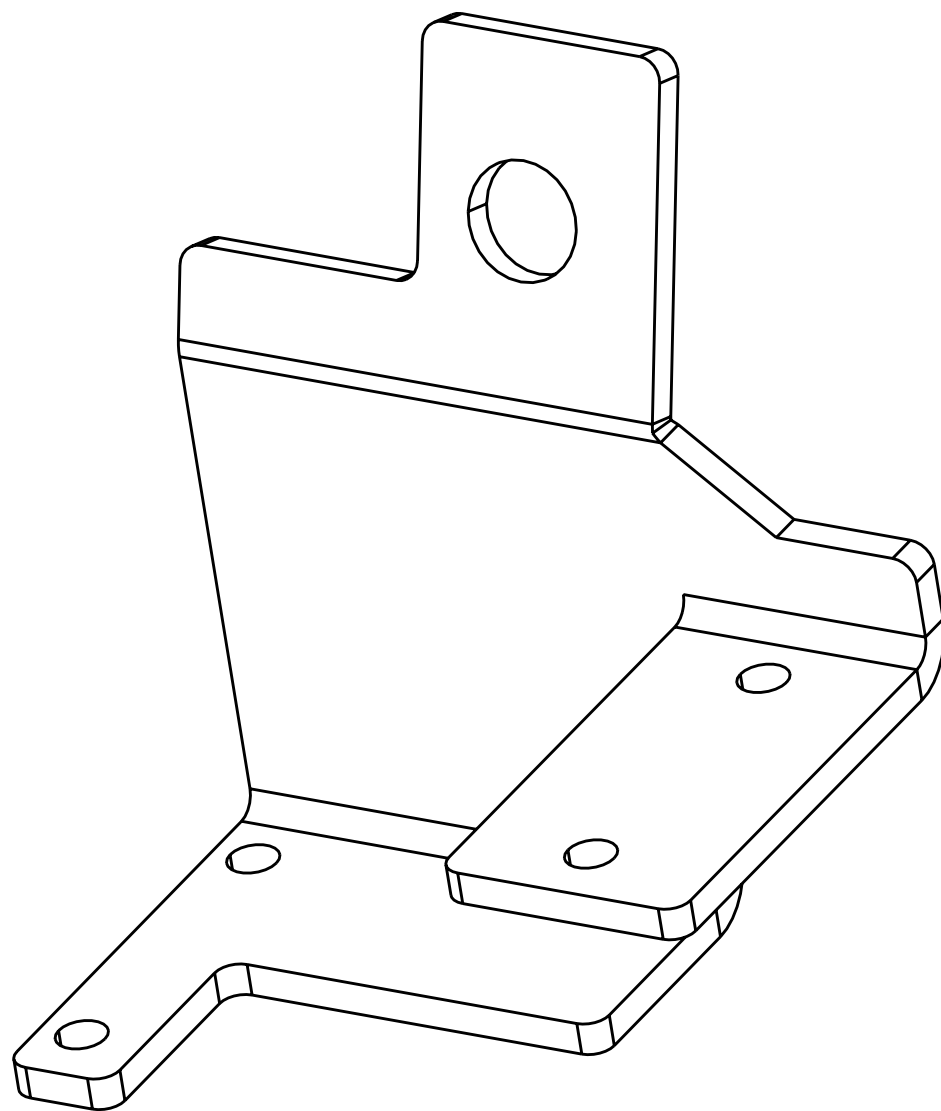
<u>ITEM</u>	<u>QTY</u>	<u>PART NO.</u>	<u>DESCRIPTION</u>
1	1	6-42584	Left Front Mount Plate for 4115 -ONLY
2	1	6-42585	Right Front Mount Plate for 4115 -ONLY
3	1	8-14240	Hood Panel for 4100 and 4115



REV.	DCR NO.	DESCRIPTION	DRAFTSMAN	DATE
A		PER 4100 UPDATE	CAD	8-21-02



6-39308  
LEFT FRONT MOUNT  
(1) REQUIRED



6-39309  
RIGHT FRONT MOUNT  
(1) REQUIRED



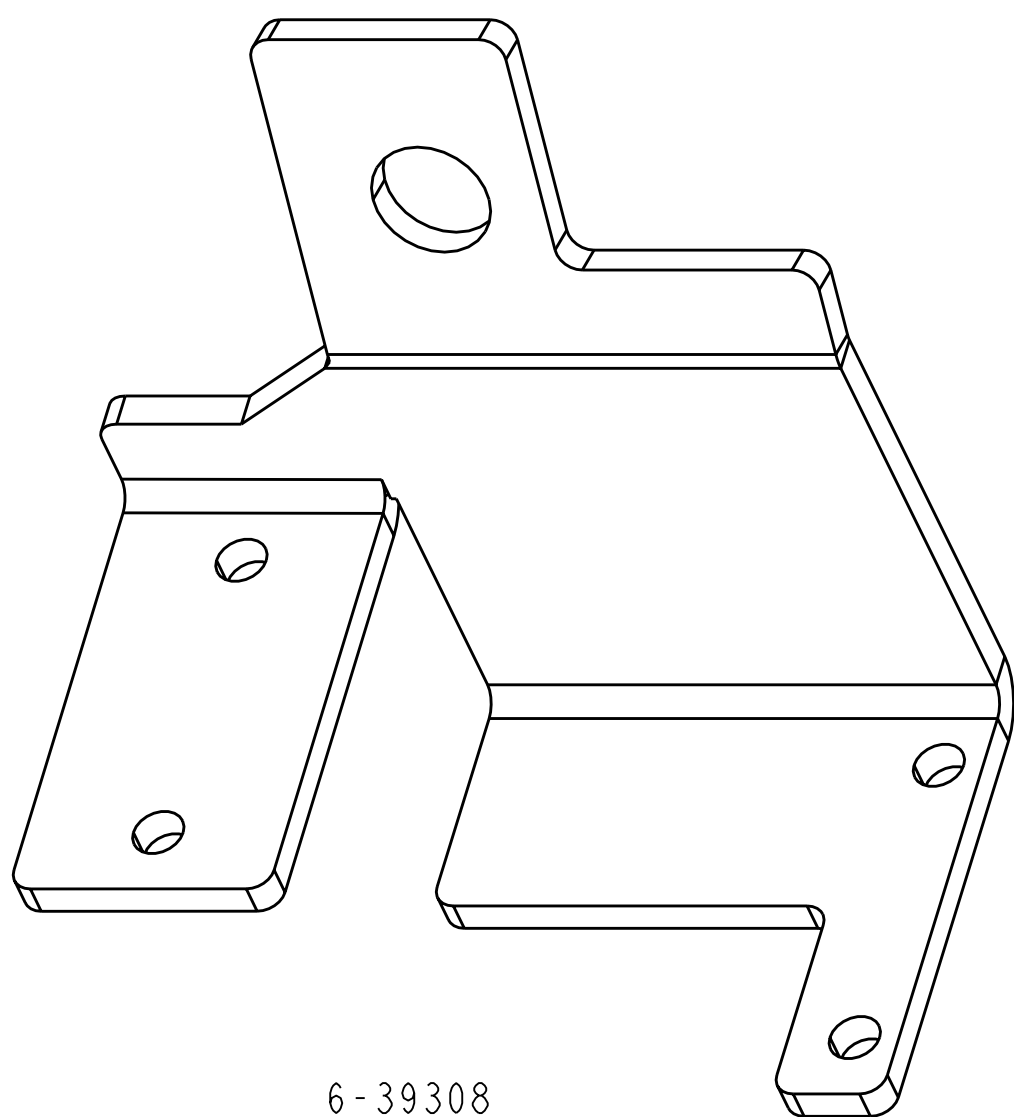
8-14240  
HOOD FOR 4100 (AND 4115 MODELS)  
(1) REQUIRED PER CAB

SEAL 3-15068  
55" LG

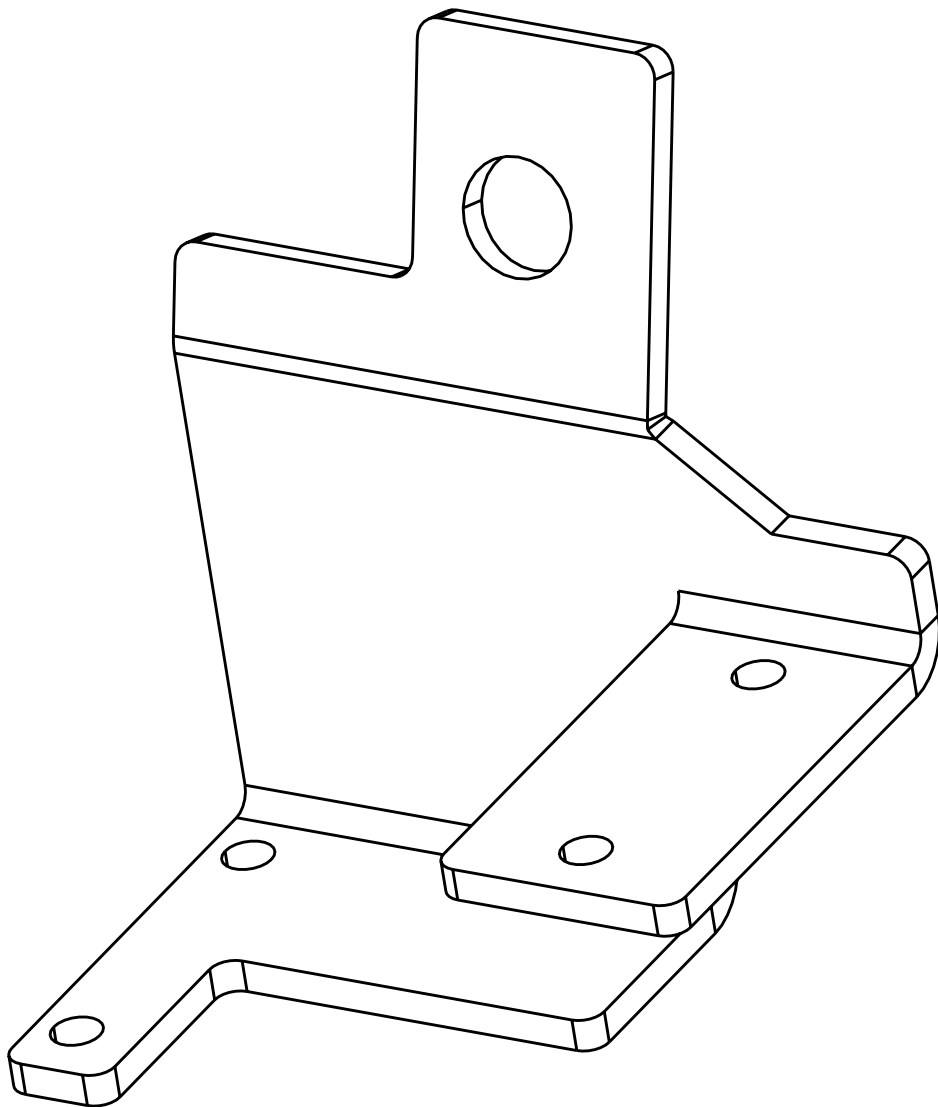
HOOD WELDMENT  
REF 7-15433

TOLERANCES UNLESS NOTED OTHERWISE  X ± .09 XX ± .06 XXX ± .03 HOLE SIZE .015/-.010 ANGLE ± .5°	CUSTOMER NAME & MOD NO: JD 4100		MATL SPEC:	
	CUSTOM PRODUCTS 1715 SOUTH SIBLEY AVE. LITCHFIELD, MN 55355			
	TITLE	DRWG SIZE	DRWG NO.	REV LEVEL
	MOUNT KIT FOR JD 4100 -ONLY-	C	8-14241	A
DRAWN: JKN DATE: 3/22/99				

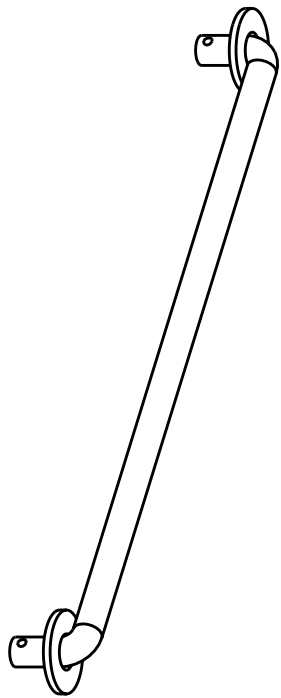
REV.	DCR NO.	DESCRIPTION	DRAFTSMAN	DATE
A		PER 4110 RELEASE	CAD	8-21-02



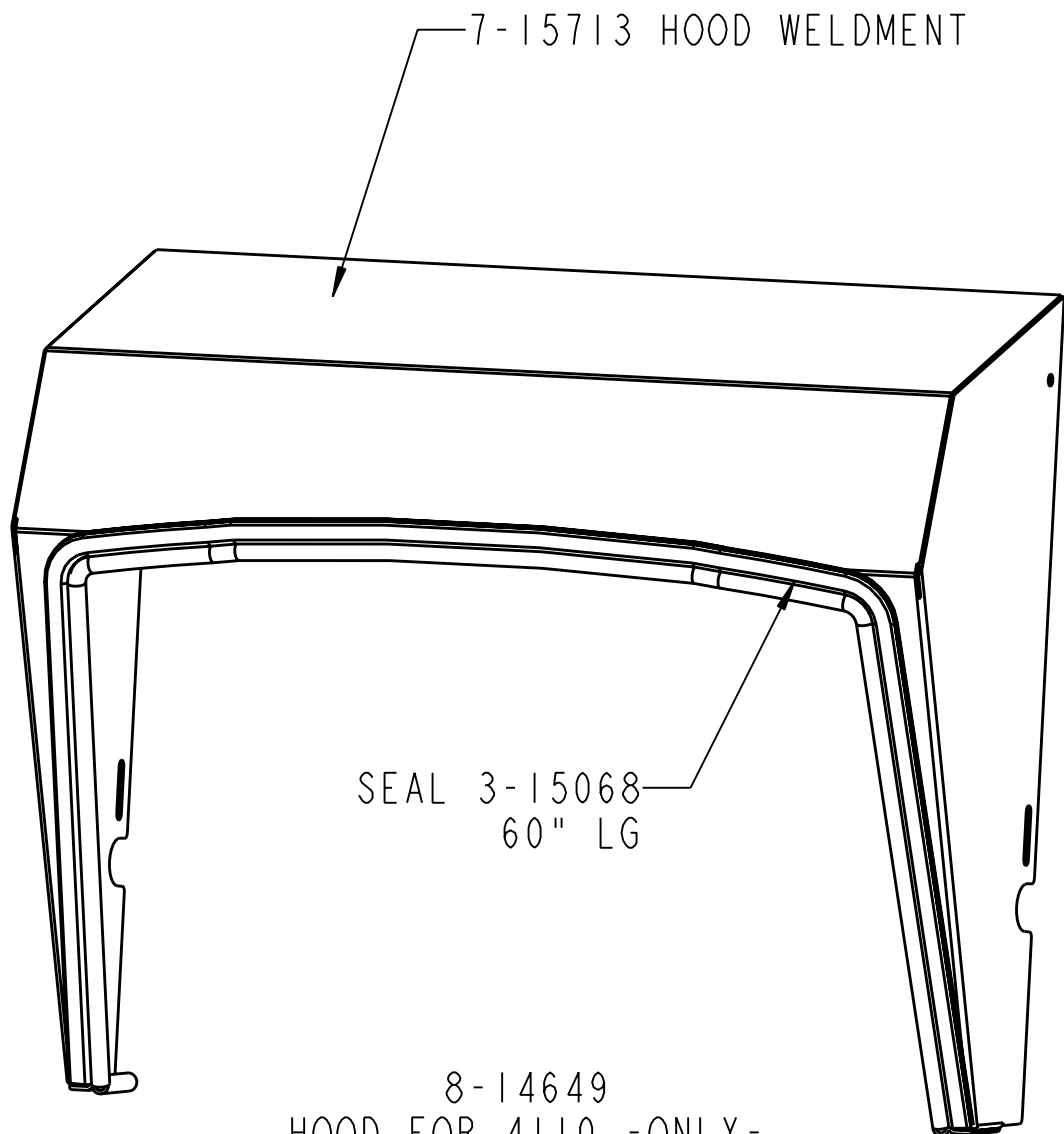
6-39308  
LEFT FRONT MOUNT  
(1) REQUIRED



6-39309  
RIGHT FRONT MOUNT  
(1) REQUIRED



7-15714  
4110 HOOD ROD WELDMENT  
(1) REQUIRED  
MUST BE USED FOR  
PROPER HOOD ACCESS

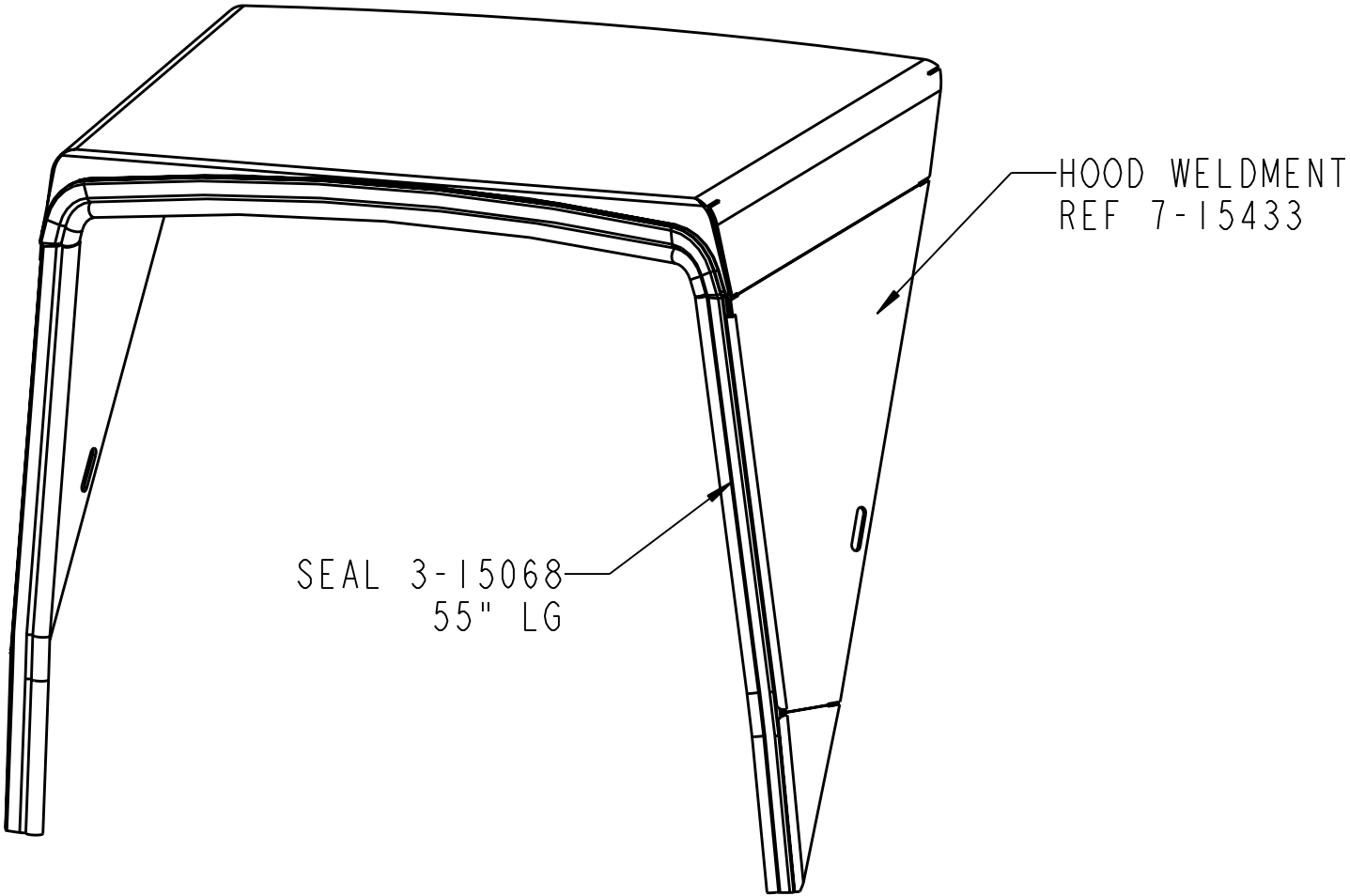
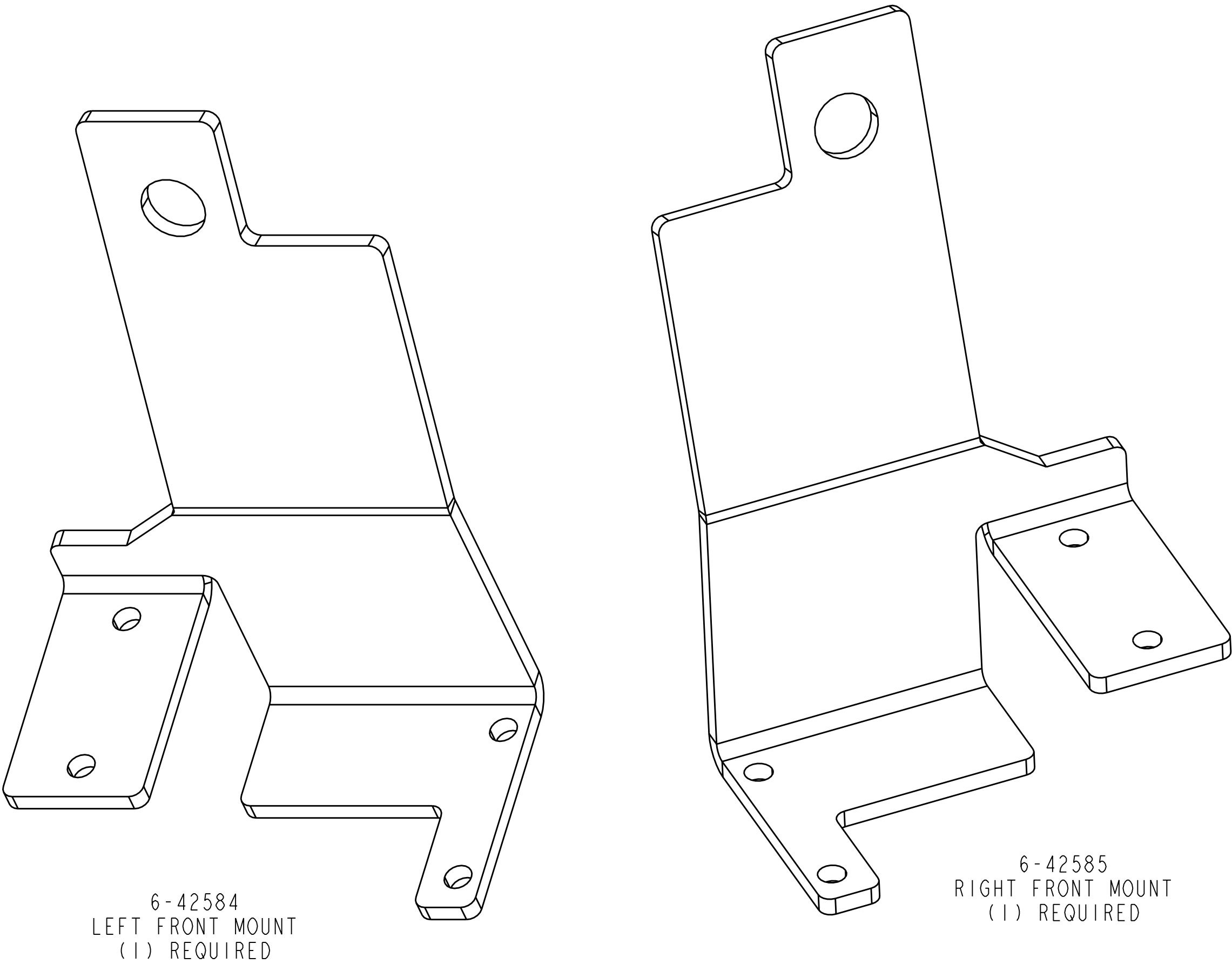


8-14649  
HOOD FOR 4110 -ONLY-  
(1) REQUIRED PER CAB

NOTE: FUEL COVER LID NEEDS TO BE MODIFIED  
BY CUSTOMER FOR PROPER HOOD ACCESSING

TOLERANCES UNLESS NOTED OTHERWISE  X ± .09 .XX ± .06 .XXX ± .03 HOLE SIZE .065/.010 ANGLE ± 5°	CUSTOMER NAME & MOD NO: JD 4110		MATL SPEC:	
	CUSTOM PRODUCTS 1715 SOUTH SIBLEY AVE. LITCHFIELD, MN 55355			
	TITLE	DRWG SIZE	DRWG NO.	REV LEVEL
	MOUNT KIT FOR JD 4110 -ONLY-	C	8-14647	A
DRAWN: JKN DATE: 3/22/99				

REV.	DCR NO.	DESCRIPTION	DRAFTSMAN	DATE
A		PER 4115 UPDATE	CAD	8-21-02



8-14240  
HOOD FOR 4115 (AND 4100) MODELS  
(1) REQUIRED PER CAB

TOLERANCES UNLESS NOTED OTHERWISE	CUSTOMER NAME & MOD NO: JD 4115		MATL SPEC:		
	CUSTOM PRODUCTS 1715 SOUTH SIBLEY AVE. LITCHFIELD, MN 55355				
X ± .09 .XX ± .06 XXX ± .03 HOLE SIZE .015/-.010 ANGLE ± 5 °	TITLE		DRWG SIZE	DRWG NO.	REV LEVEL
	MOUNT KIT FOR JD 4115 -ONLY-		C	8-14648	A
			DRAWN: JKN DATE: 3/22/99		

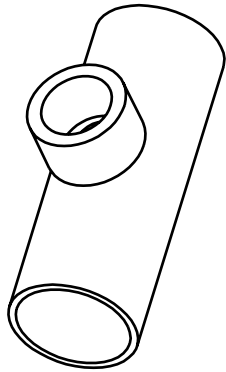
John Deere 4100, 4110 and 4115  
A-11170 Replacement Parts

**Heater Kit 8-14232**

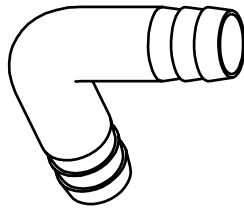
<u>ITEM</u>	<u>QTY</u>	<u>PART NO.</u>	<u>DESCRIPTION</u>
1	1	7-11308	Heater Tee Weldment
2	2	3-10282	90 degrees Plastic Tee
3	4	3-10725	Nylon Wire Ties
4	6	3-10858	# 10 Hose Clamp
5	8 FT	3-11172	Heater Hose
6	1	3-15815	Aluminum Adapter Fitting
7	2	3-13442	# 16 Hose Clamp
8	1	3-16823	O-Ring
9	2	3-12119	3/8-18 NPT TO 5/8 HOSE NIPPLE



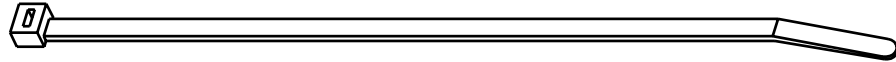
REV.	DCR NO.	DESCRIPTION	DRAFTSMAN	DATE
-	-	UPDATED TO 4110 AND 4115 MODELS	CAD	7-29-02



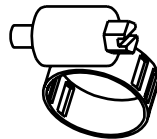
7-11308  
LOWER RADIATOR "T"  
(1) REQUIRED PER CAB



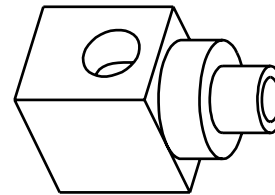
3-10282  
PLATICE ELBOW  
FOR 5/8" HOSE  
(2) REQUIRED PER CAB



3-10725  
WIRE TIE NYLON  
(4) REQUIRED PER CAB



3-10858  
5/8" HOSE CLAMP  
(6) REQUIRED PER CAB



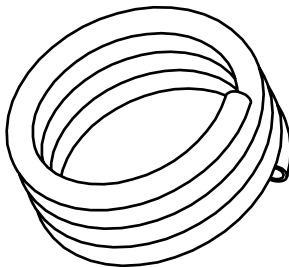
3-12123  
ALUMINUM ADAPTER FITTING  
(USED ON JD 4100 CABS)  
(1) REQUIRED



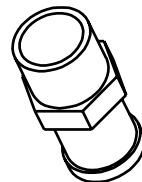
3-15815  
ALUMINUM ADAPTER FITTING  
(USED ON 4110 AND 4115 CABS)  
(1) REQUIRED



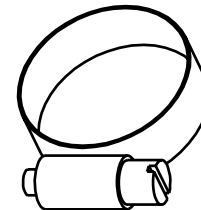
3-16823  
O-RING  
(1) REQUIRED PER CAB



3-10704  
WIRE DUCT 3/8" x 3 FT LONG  
(1) REQUIRED PER CAB



3-12119  
3/8-18 NPT TO 5/8 HOSE  
(2) REQUIRED PER CAB



3-13442  
LARGE HOSE CLAMP  
(2) REQUIRED PER CAB

ITEM 3-12136, BOX 21.25 x 11.00 x 13.00 (NOT SHOWN)

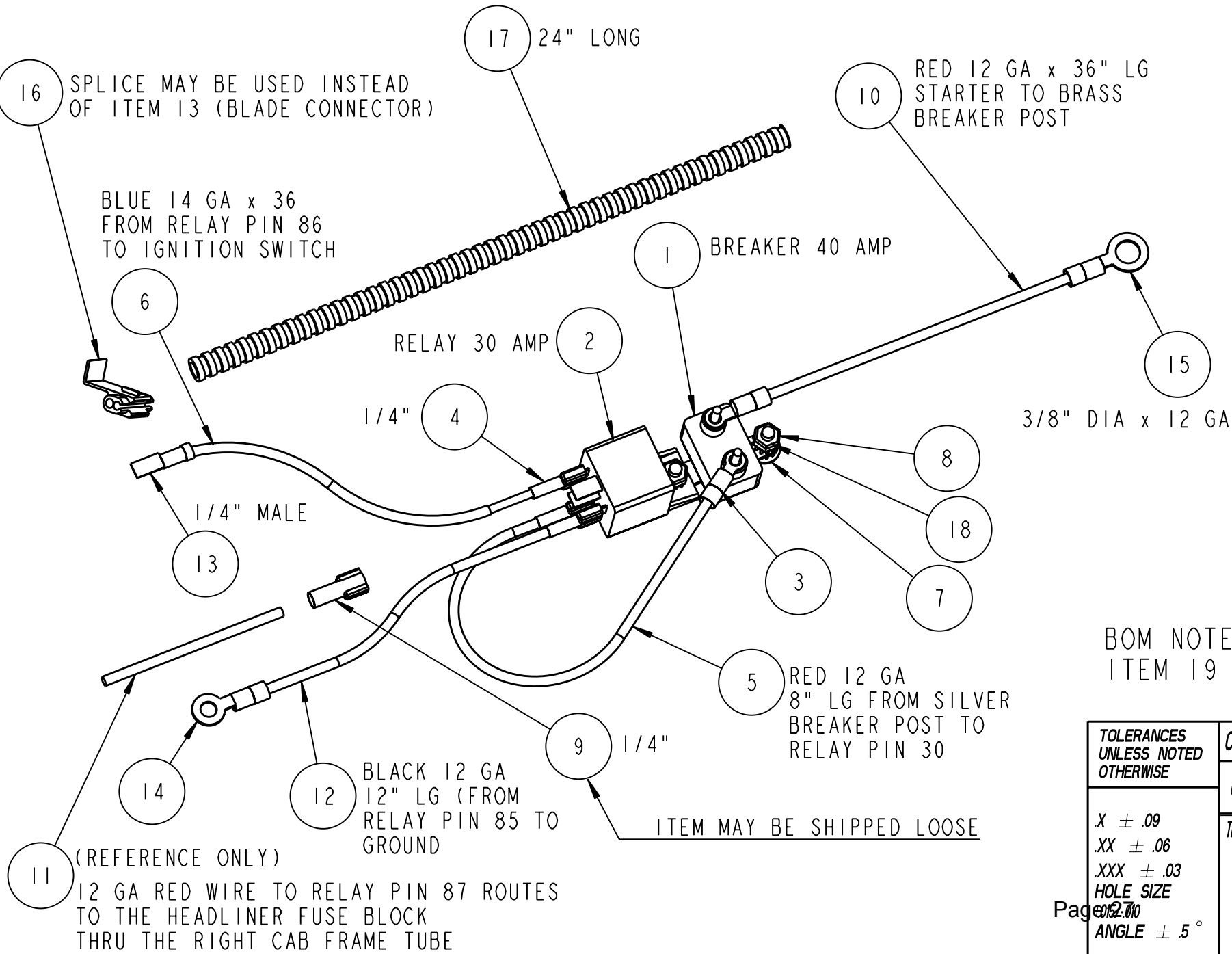
TOLERANCES UNLESS NOTED OTHERWISE  X ± .09 XX ± .06 XXX ± .03 HOLE SIZE .005/.010 ANGLE ± .5°	CUSTOMER NAME & MOD NO: JD 4100, 4110 AND 4115 CUSTOM PRODUCTS 1715 SOUTH SIBLEY AVE. LITCHFIELD, MN 55355		MATL SPEC:	
	TITLE  HEATER KIT	DRWG SIZE  B	DRWG NO.  8-14232	REV LEVEL  A
DRAWN: JKN DATE: 3/22/99				



REV.	DCR NO.	DESCRIPTION	DRAFTSMAN	DATE
A		RELEASED FOR VENDOR PROCESSING	CAD	4-18-02

ITEM #	DESCRIPTION	QTY
1	3-11317_BREAKER_40_AMP	1
2	3-12955_RELAY_30_AMP_	1
3	3-10305_TERMINAL EYE 10-12 SMALL	2
4	3-10670_SLIDE FEM CON 14 GA	3
5	3-10351_WIRE_12GA-RED_X-8_	1
6	3-10314_WIRE_14GA-BLUE_X-20_	1
7	3-10104_MSCR_NO10_X-63_THSL	2
8	3-10308_1024_NYLOCK_	2
9	3-14553_SLIDE_FEM_10-12_GA_	1
10	3-10351_WIRE_12GA-RED_X-20_	1
11	3-10351_WIRE_12GA-RED_X-180(REFERENCE ONLY)	
12	3-10340_WIRE_12GA-BLACK_X-12_	1
13	3-11428_TERMINAL-MALE STR	1
14	3-10673_TERMINAL EYE 10-12 GA MED	1
15	3-10674_TERMINAL EYE 10-12 LARGE	1
16	3-10982_WIRE SPLICE BLUE 14-16 GA	1
17	3-10704_DUCT_WIRE_350X24	1
18	3-13083_WASHER_LOCK_EXT_T	4
19	3-16265_BAG_ZIP_10_X-12	SEE BOM

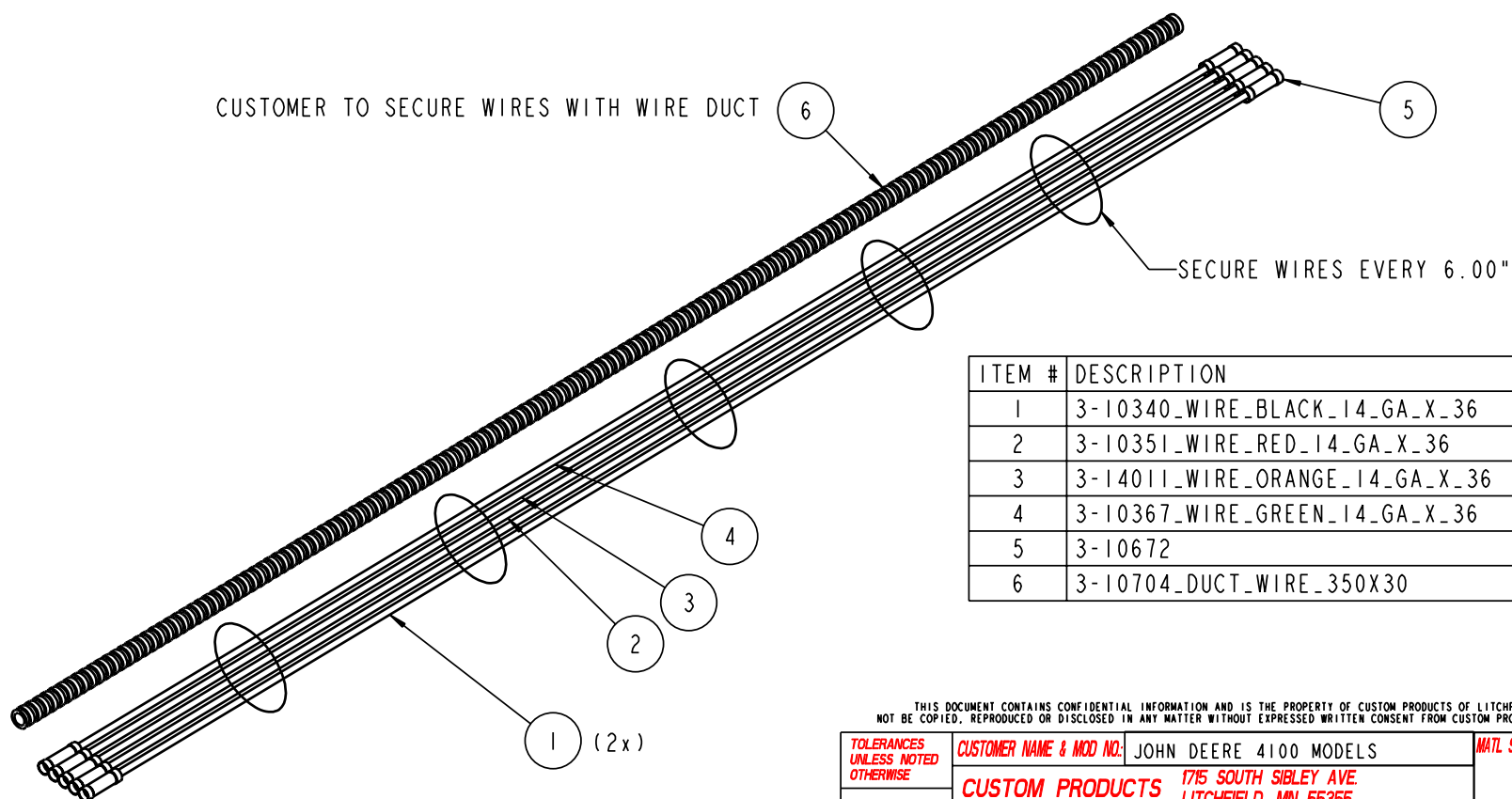
BOM NOTES:  
ITEM 19 - (NOT SHOWN) ALL PARTS  
TO BE PLACED IN THIS BAG



TOLERANCES UNLESS NOTED OTHERWISE  X ± .09 .XX ± .06 .XXX ± .03 HOLE SIZE OF 2.00 ANGLE ± .5°	CUSTOMER NAME & MOD NO.: UNIVERSAL RELAY-BREAKER HARNESS		MATL SPEC:	
	CUSTOM PRODUCTS 1715 SOUTH SIBLEY AVE. LITCHFIELD, MN 55355			
	TITLE <b>UNIVERSAL WIRE RELAY BREAKER HARNESS</b>		DRWG SIZE <b>B</b>	DRWG NO. <b>3-17803</b>
		REV LEVEL <b>A</b>		
DRAWN: CAD		DATE: 4-5-02		

REV.	DCR NO.	DESCRIPTION	DRAFTSMAN	DATE
------	---------	-------------	-----------	------

CUSTOMER NOTE: ONCE DUAL LIGHTS ARE REMOVED FROM FACTORY ROPS  
ROUTE WIRE EXTENSION KIT THROUGH DUAL LIGHT BRACKET HOLES THEN INTO CAB



ITEM #	DESCRIPTION	QTY
1	3-10340_WIRE_BLACK_14_GA_X_36	2
2	3-10351_WIRE_RED_14_GA_X_36	1
3	3-14011_WIRE_ORANGE_14_GA_X_36	1
4	3-10367_WIRE_GREEN_14_GA_X_36	1
5	3-10672	10
6	3-10704_DUCT_WIRE_350X30	1

THIS DOCUMENT CONTAINS CONFIDENTIAL INFORMATION AND IS THE PROPERTY OF CUSTOM PRODUCTS OF LITCHFIELD, INC. AND MAY NOT BE COPIED, REPRODUCED OR DISCLOSED IN ANY MANNER WITHOUT EXPRESSED WRITTEN CONSENT FROM CUSTOM PRODUCTS OF LITCHFIELD, INC.

TOLERANCES UNLESS NOTED OTHERWISE	CUSTOMER NAME & MOD NO.: JOHN DEERE 4100 MODELS		MATL SPEC:	
	CUSTOM PRODUCTS 1715 SOUTH SIBLEY AVE. LITCHFIELD, MN 55355			
X ± .09 .XX ± .06 .XXX ± .03 HOLE SIZE .015/.010 ANGLE ± .5°	TITLE WIRE EXTENSION KIT FOR DUAL LIGHTS		DRWG SIZE B	DRWG NO. 8-14639
			DATE 8-21-02	REV LEVEL

SCALE 0.500