

INSTALLATION INSTRUCTIONS A-11836 Cab with Doors Kit



Vehicle set up instructions;

This cab is designed to be used on model year 2010 and newer, Multi-Pro 5800 Sprayer Vehicles equipped with a ROPS. **Replacement of standard front leaf springs with heavy duty leaf springs (Purchased separately from The Toro Company, part number 99-0569), is required for use with this cab. Contact your Toro Dealer to purchase (2) heavy duty leaf springs.**

Preparation of machine;

1. Position vehicle on a clean level surface, stop engine, engage parking brake and remove key from ignition switch.
2. Disconnect positive cable from battery.
3. Remove crating from cab and open mounting kit box. Layout parts for identification. See Figures 1 and 2.

Parts list;	ITEM	QTY	DESCRIPTION	CP PART NUMBER
	1	1	CAB SHELL ASSEMBLY	4-15538
	2	1	DOOR ASSEMBLY LH	4-15536
	3	1	DOOR ASSEMBLY RH	4-15537
	4	1	FENDER PANEL ASSEMBLY LH	4-15568
	5	1	FENDER PANEL ASSEMBLY RH	4-15569
	6	1	REAR MOUNT PANEL	1-47035
	7	1	MOUNTING KIT CONSISTS OF;	4-15539
	8	4	5/16" X 1.50" LONG, BUTTON HEAD SCREW	3-19342
	9	9	5/16" FLANGE NUT	3-17111
	10	2	1/4" X 1.50" LONG, ROUND HEAD SCREW	3-10101
	11	4	1/4" FLAT WASHER	3-10084
	12	4	1/4" NYLOCK NUT	3-10070
	13	4	1/4" X 1/2" LONG, PHILLIPS TRUSS HEAD SCREW	3-17057
	14	5	5/16" X 3/4" LONG, TRUSS HEAD SCREW	3-19340
	15	4	3/8" X 3/4" LONG, TRUSS HEAD SCREW	3-17805
	16	4	3/8" FLANGE NUT	3-17622

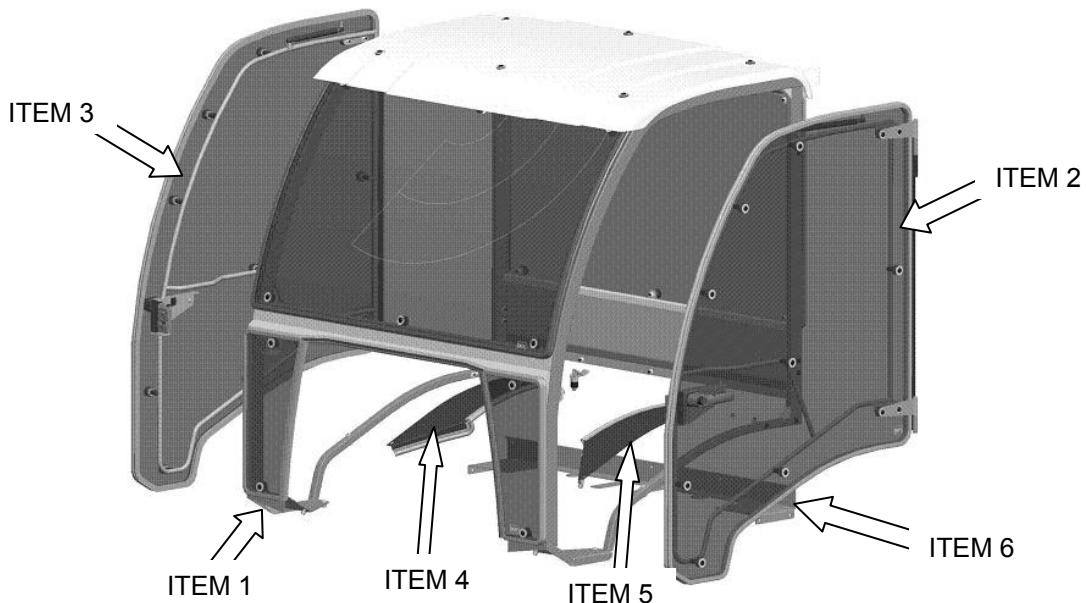


Figure 1

INSTALLATION INSTRUCTIONS A-11836 Cab with Doors Kit

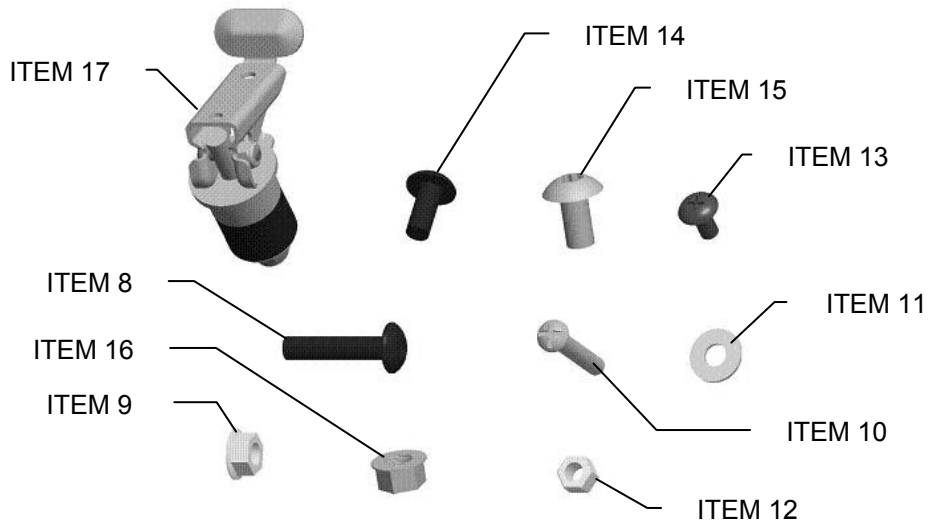


FIGURE 2
(Hardware Kit 4-15539)

Installation of Rear Mount Plate;

4. Tip up both seats forward and remove seatbelt mount brackets.
5. Place rear mount panel (Item 6) onto seat deck and re-install seatbelt mount brackets reusing hardware (**Figure 3**).

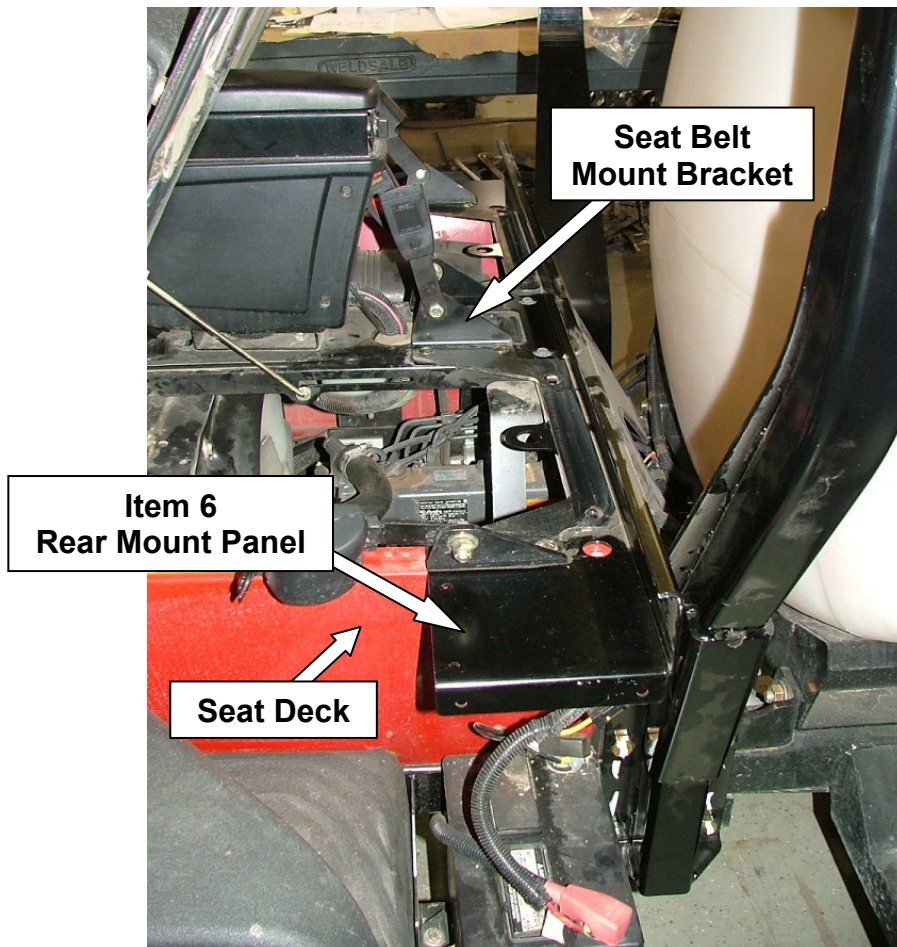


Figure 3

INSTALLATION INSTRUCTIONS

A-11836 Cab with Doors Kit

Installation of Cab;

6. Open cab doors and disconnect gas spring. Remove doors from cab by pulling the door upward, off the hinge pins. Carefully set doors aside.
7. Lift cab up using a strap and hoist. Remove shipping pallet from cab.
8. Place cab onto machine by aligning the rear mount plate holes with the rear cab tube connection holes and the front of cab around the hood (**Figure 4**).

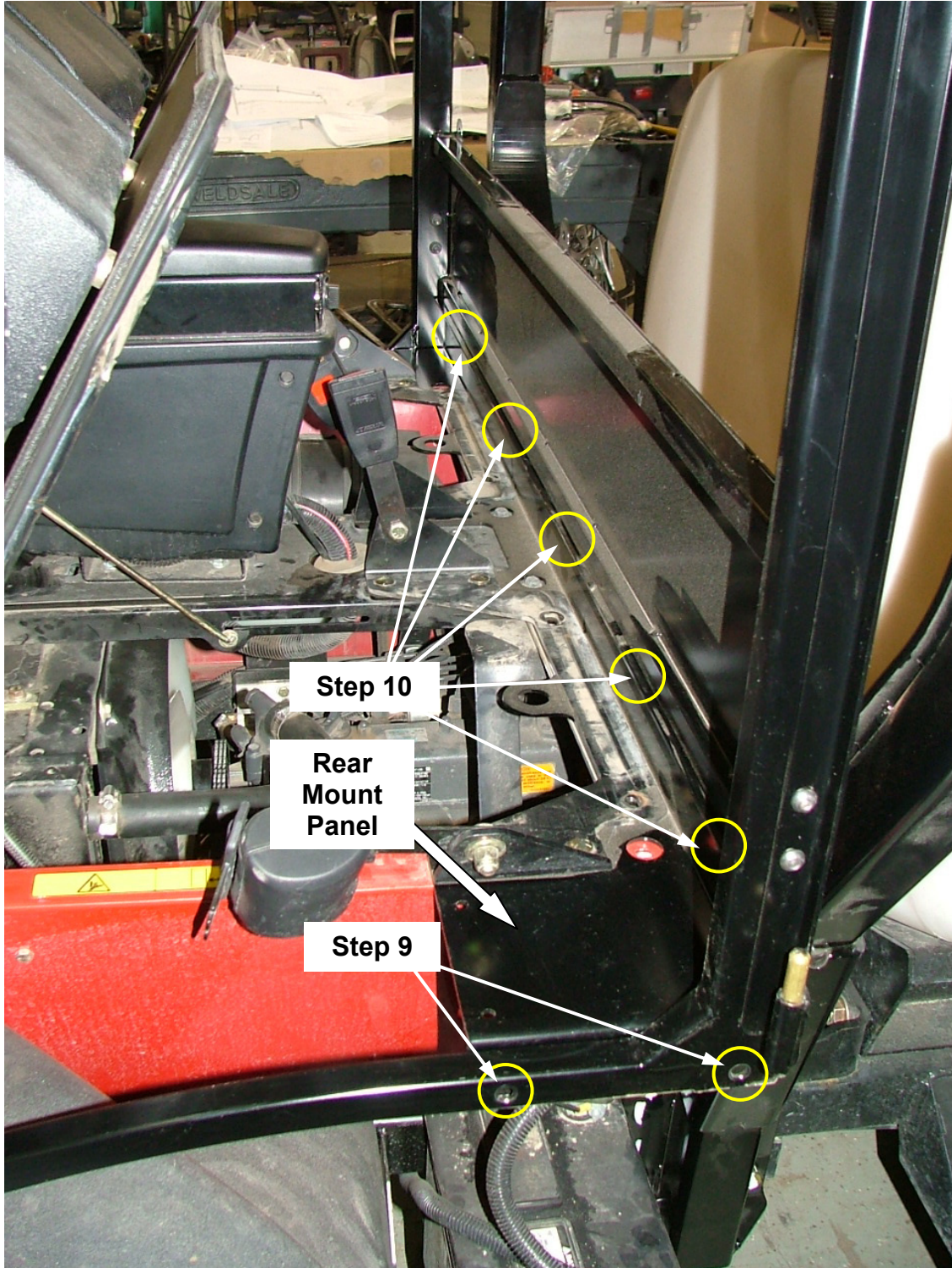


Figure 4

05-11069
12/27/2012

INSTALLATION INSTRUCTIONS A-11836 Cab with Doors Kit

9. Secure each rear-side frame of cab to rear mount plate using **(Figure 4)**;
(4) 5/16" x 1.50" long button head screws (Item 8)
(4) 5/16" flange nuts (Item 9).
10. Secure rear of cab to rear mount plate using **(Figure 4)**;
(5) 5/16" x 3/4" long button head screws (Item 14)
(5) 5/16" flange nuts (Item 9).
11. Using a 3/8" drill bit, transfer-drill (4) 3/8" holes into the foot deck platform **(Figure 5)**.
12. Secure the front of the cab to the foot deck using;
(4) 3/8" x 3/4" long button head screws (Item 15)
(4) 3/8" nylock nuts (Item 16)

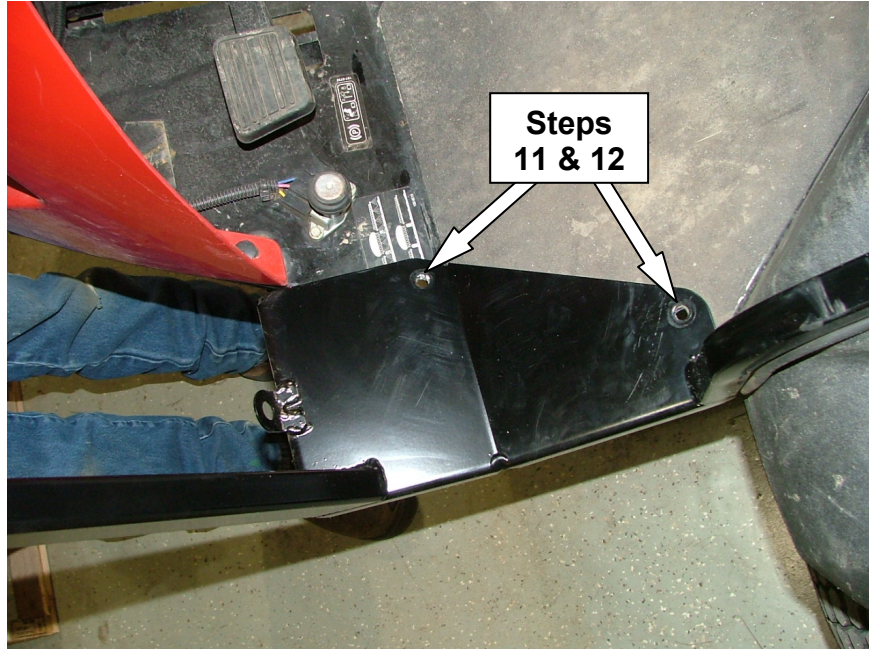


Figure 5

13. Install LH fender panel assembly (Item 4) to LH cab side frame **(Figure 6)**. Secure using;
(1) 1/4" x 1-1/2" button head screw (Item 10)
(2) 1/4" flat washer (Item 11)
(2) 1/4" nylock nut (Item 12)
(2) 1/4" x 1/2" long, Phillips truss head bolt (Item 13)
14. Repeat step 13 for RH fender panel assembly onto RH cab side frame **(Figure 7)**.

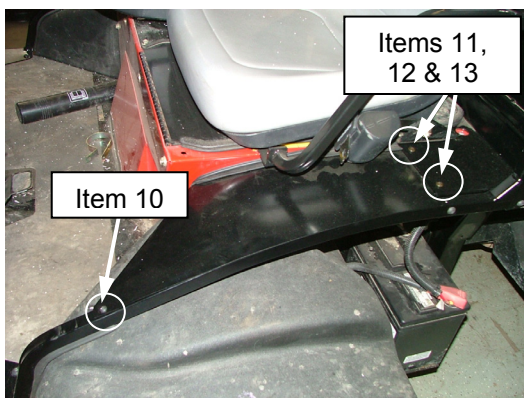


Figure 6

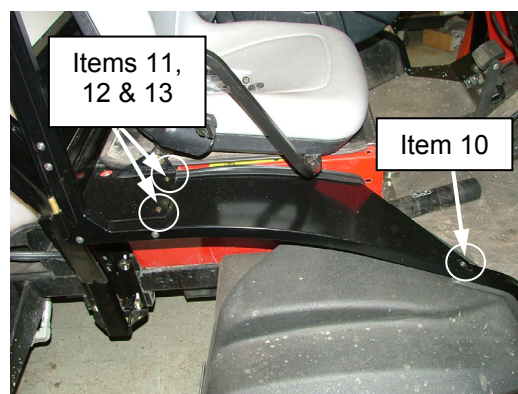


Figure 7

INSTALLATION INSTRUCTIONS A-11836 Cab with Doors Kit

15. Re-install doors and connect gas springs.
16. Open and close the doors. The striker stud can be adjusted for proper 2-stage rotary latch engagement.
17. Layout hole location on each seat panel and drill a .375" diameter hole as shown in **Figure 8**. Install locking compression plungers (Item 17) into seat panels as shown in **Figure 9**.
18. Raise and lower seats. When lowered, rubber part of plunger is to fit into 1" hole located in rear mount panel. Fold lever to lock seat down, lift lever to tip seat up.



Figure 8

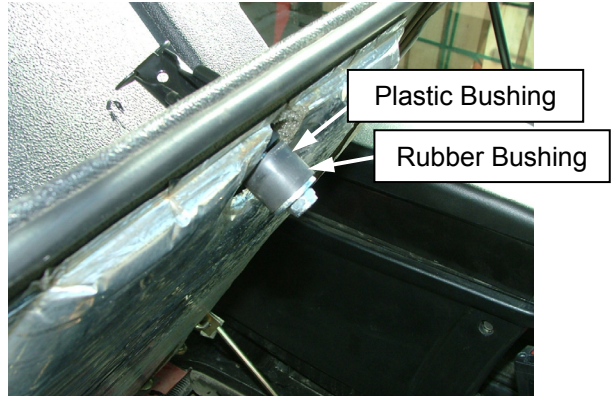


Figure 9

19. Additional foam seal and butyl tape is supplied with hardware kit and can be installed in various areas as needed.
20. Make sure all installation hardware is fully tightened at this time. Reconnect battery.
21. Cab installation is now complete.
22. Proceed with replacing the vehicle's standard front leaf springs with **heavy duty front springs, Toro P/N 99-0569 (Purchased separately from The Toro Company)**.

Optional kits are available for your Multi-Pro 5800 Sprayer Cab and are noted below;

- A-11838 Wiper kit, radial coverage with park, switch, wiring and fuse
- A-11839 Washer fluid tank with pump, wet arm, switch, wiring and fuse
- A-11840 Interior mirror, full width 5 panel
- A-11841 Air Conditioner kit, compressor, condenser, plenum, wire harnesses and controls
- A-11845 Defroster fan kit with switch, wiring and fuse
- 99-0569 Heavy Duty Leaf Springs (Supplied by the Toro Company; (2) required per machine)**



Sunshade and Front Window kits are also available for the Multi-Pro 5800 Sprayer;

- A-11837 Sunshade roof and frame
- A-11842 Front window for sunshade frame

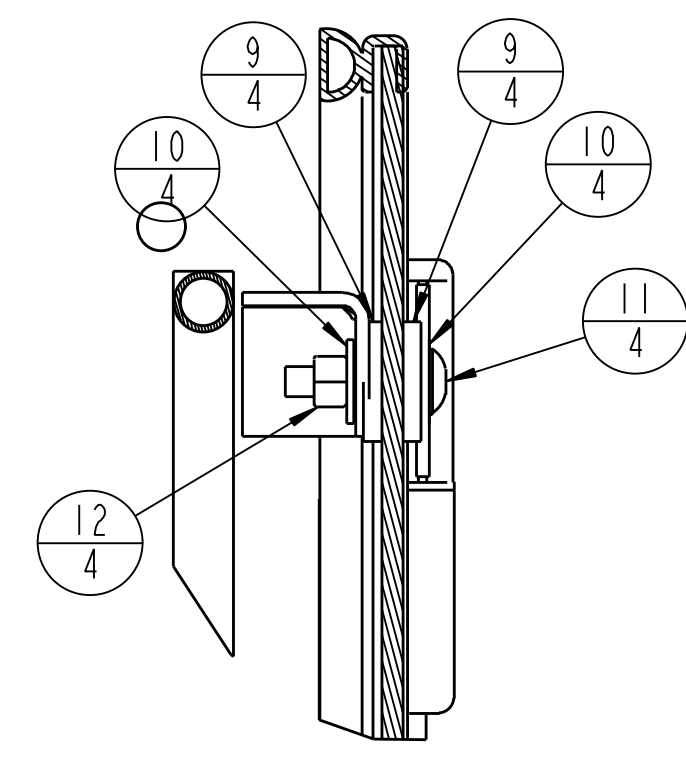
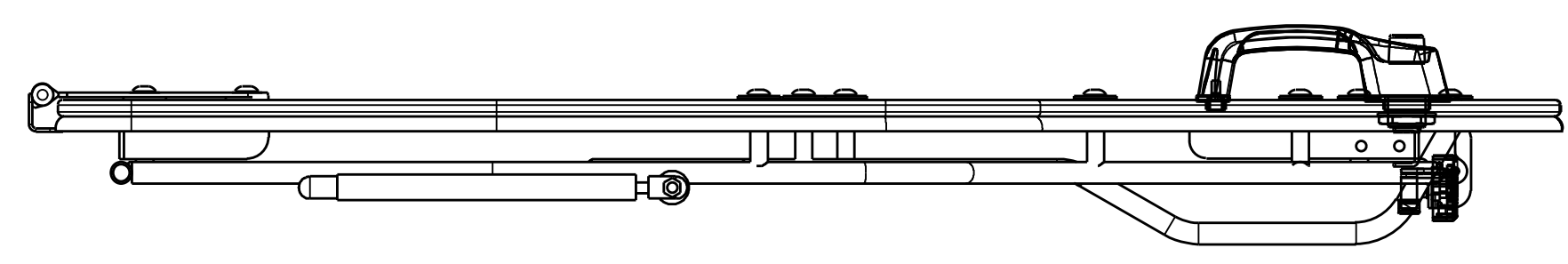
For questions or comments, contact;



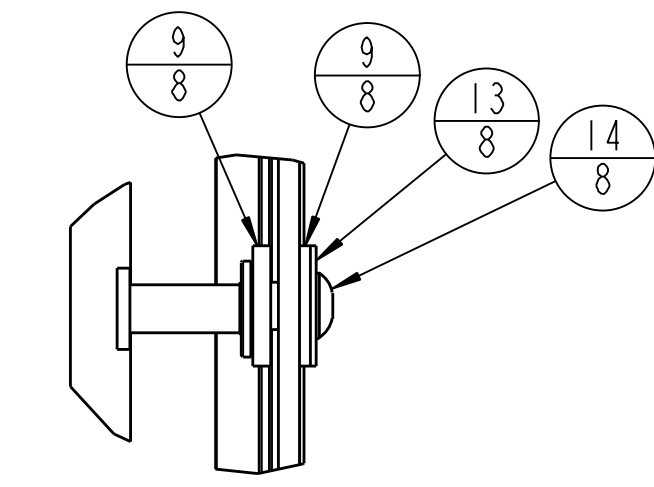
PO BOX 70, 1715 S. Sibley Avenue, Litchfield, MN 55355-0070
Ph: (320) 693-3221 Fax: (320) 693-4833
Website: www.CPcabs.com

05-11069
12/27/2012

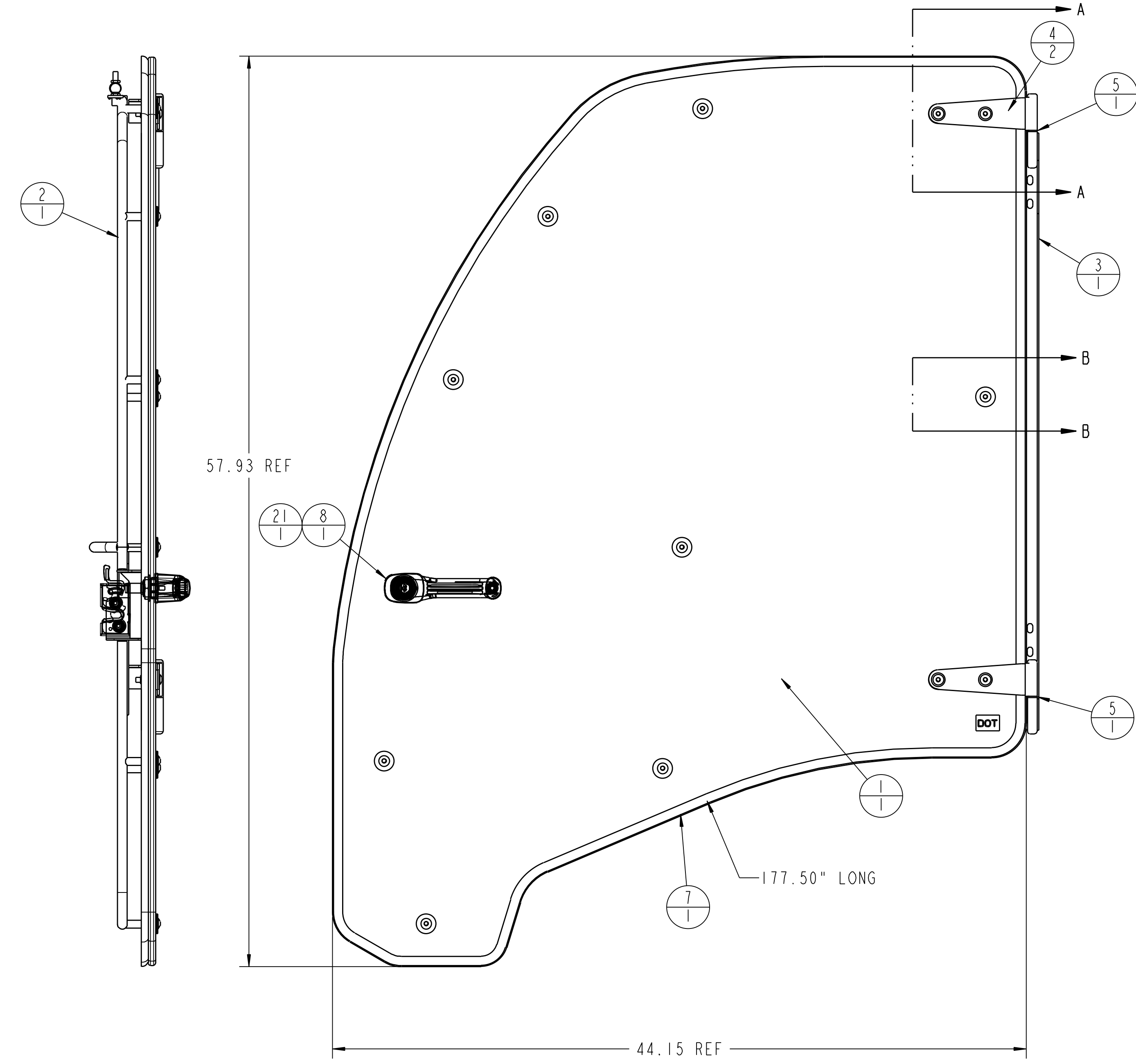
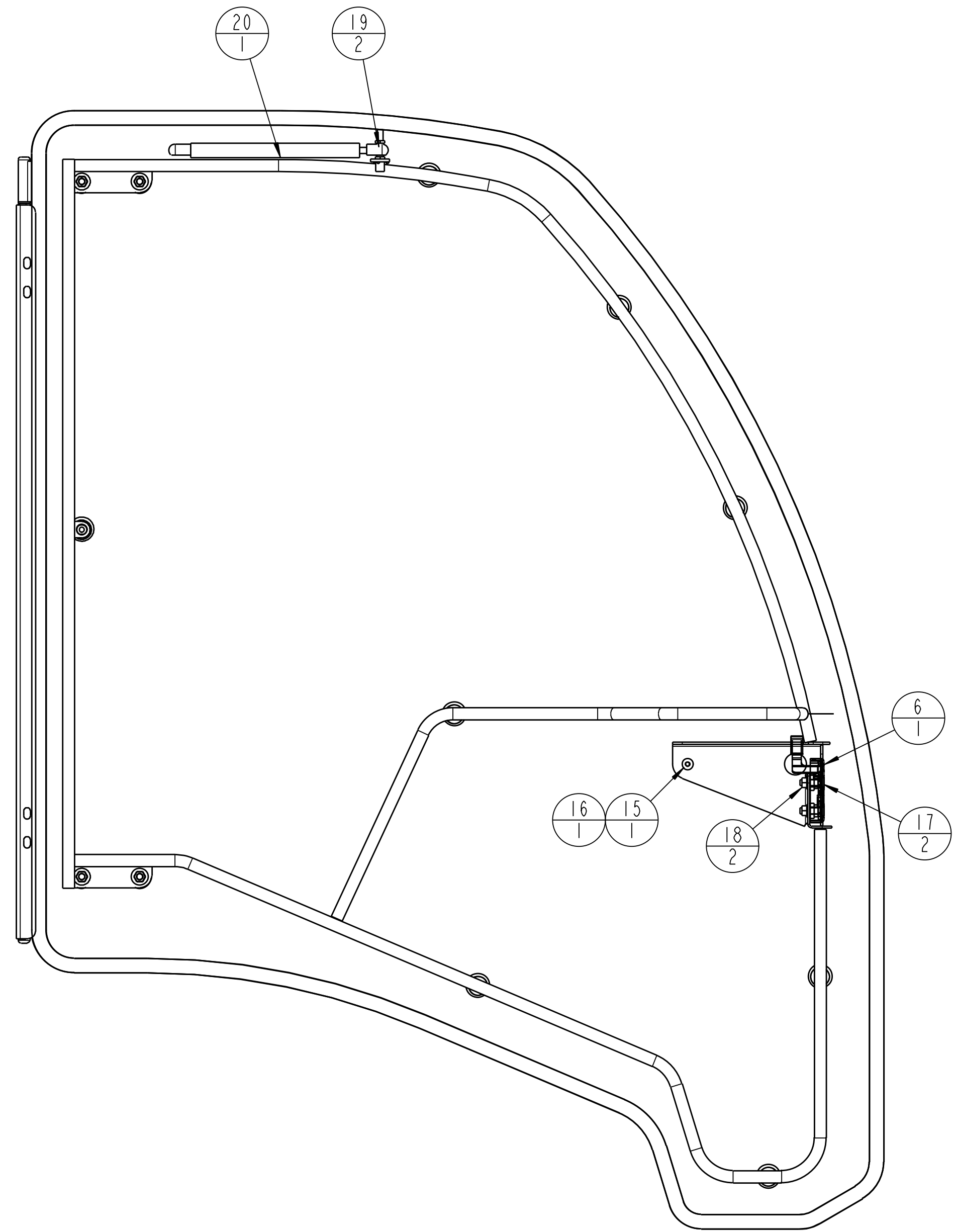
REV	DCR NO.	DESCRIPTION	DRAFTSMAN	DATE
A	9934	CHANGED BOLT LENGTH SECTION A-A	LPJ	10/25/10
B	10016	LATCH 3-19308 WAS 3-19309	CAD	12/8/10



SECTION A-A
SCALE 0.500



SECTION B-B
SCALE 0.500



SCALE 0.200

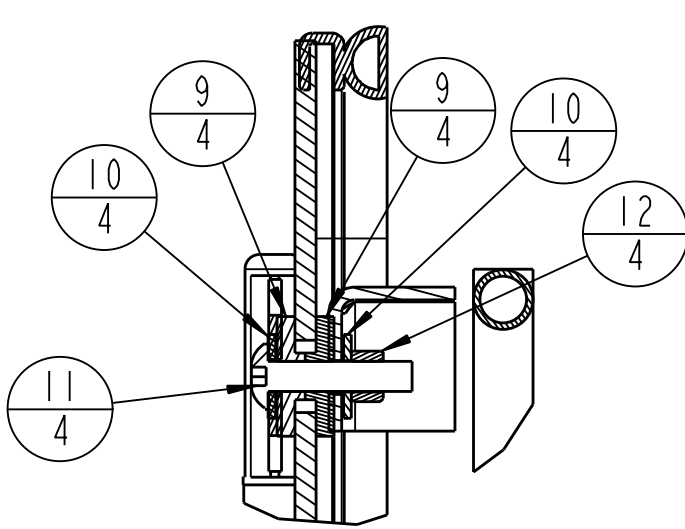
ITEM #	DESCRIPTION	QTY
1	3-19500_DOOR_GLASS_TORO_5800	1
2	2-16597_DOOR_FRAME_LH	1
3	2-16603_DOOR_MOUNT_LH	1
4	2-16504_HINGE_DOOR_WELDMENT	2
5	3-15971_HINGE_WASHER	2
6	3-19308_LATCH_DLP_615100-2_SW	1
7	3-19324_BUB_RUB_DOOR_177_50	1
8	3-19307_HANDLE_EXTERI_SW0001	1
9	3-16217_GLASS_WASHER	24
10	3-10085_3125_WASHER	8
11	3-19342_MSCR_313X150_TRUSS_TORX	4
12	3-10072_3125_NYLOCK	4
13	3-18187_31_FENDER_WASHER	8
14	3-18324_313_18_NC_125_TH_TORX	8
15	3-10076_250_LOCK_WASHER	1
16	3-18312_MSCR_M6X20_TH_TORX	1
17	3-18453_MSCR_312-18X125_FH_TORX	2
18	3-17111_SER_FLNG_NUT_312	2
19	3-11821_BALL_STUD	2
20	3-13024_GAS_SPRING_6IN	1
21	3-19325_FOAM_SPACER_DOOR_MIR	1

WEIGHT = 56.2 LBS
REFERENCE MIRROR PART 4-15537

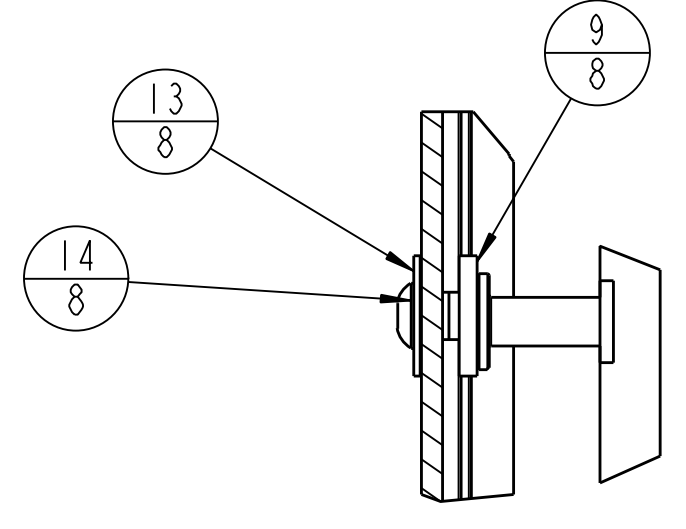
THIS DOCUMENT CONTAINS CONFIDENTIAL INFORMATION AND IS THE PROPERTY OF CUSTOM PRODUCTS OF LITCHFIELD, INC. AND MAY NOT BE COPIED, REPRODUCED OR DISCLOSED IN ANY MANNER WITHOUT EXPRESSED WRITTEN CONSENT FROM CUSTOM PRODUCTS OF LITCHFIELD, INC.

TOLERANCES UNLESS NOTED OTHERWISE	CUSTOMER NAME & MOD NO: A-11836 TORO 5800 MY 10	MATL SPEC:
	CUSTOM PRODUCTS 1715 SOUTH SIBLEY AVE LITCHFIELD, MN 55355	
X ± .09 XX ± .06 XXX ± .03 HOLE SIZE (OE/OD) ANGLE ± 5°	TITLE: DOOR ASM LH	DRWG NO: 4-15536 1 of 1
	DRWG SIZE: D	REV LEVEL: B
	DRWN: CAD	DATE: 04-21-10

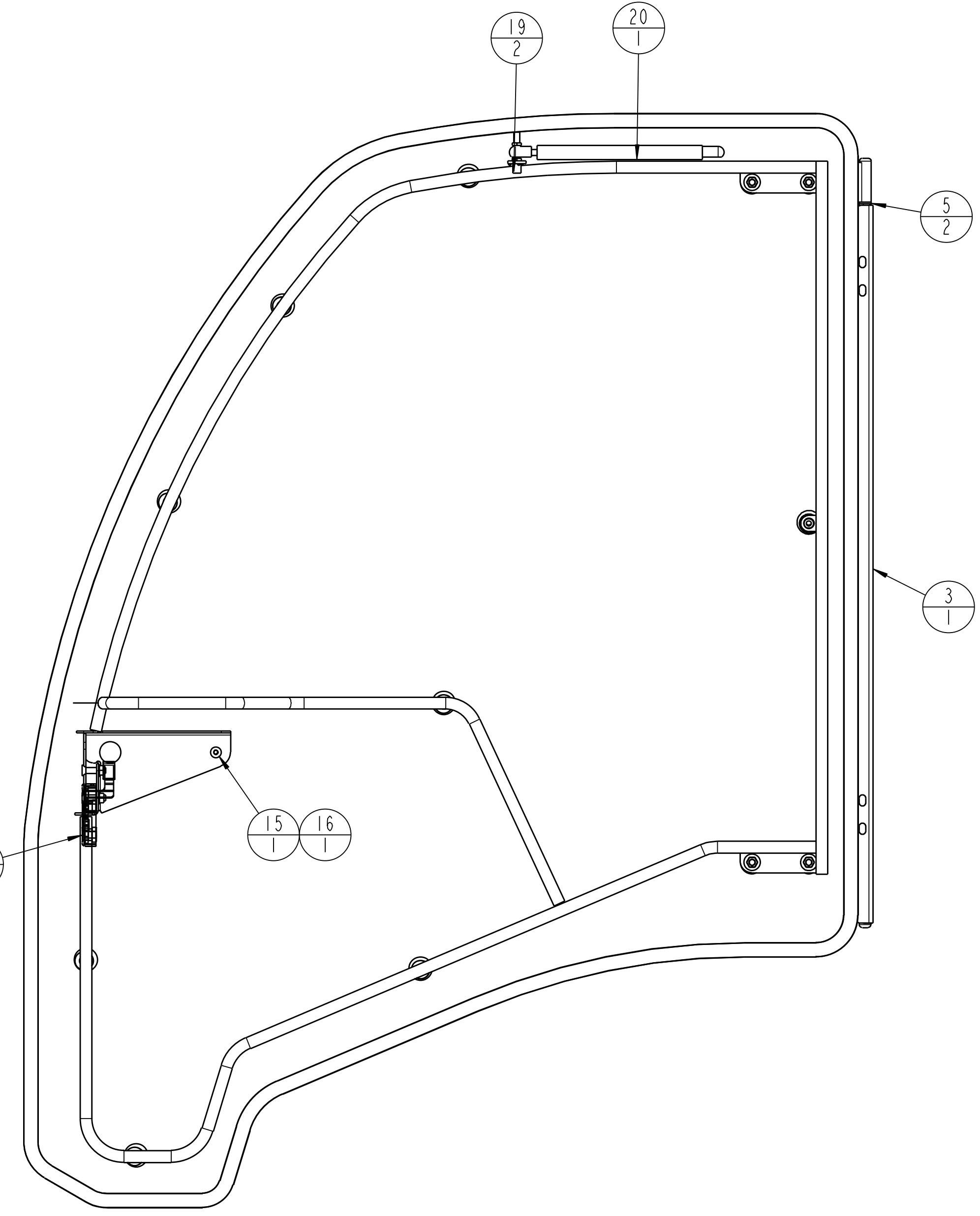
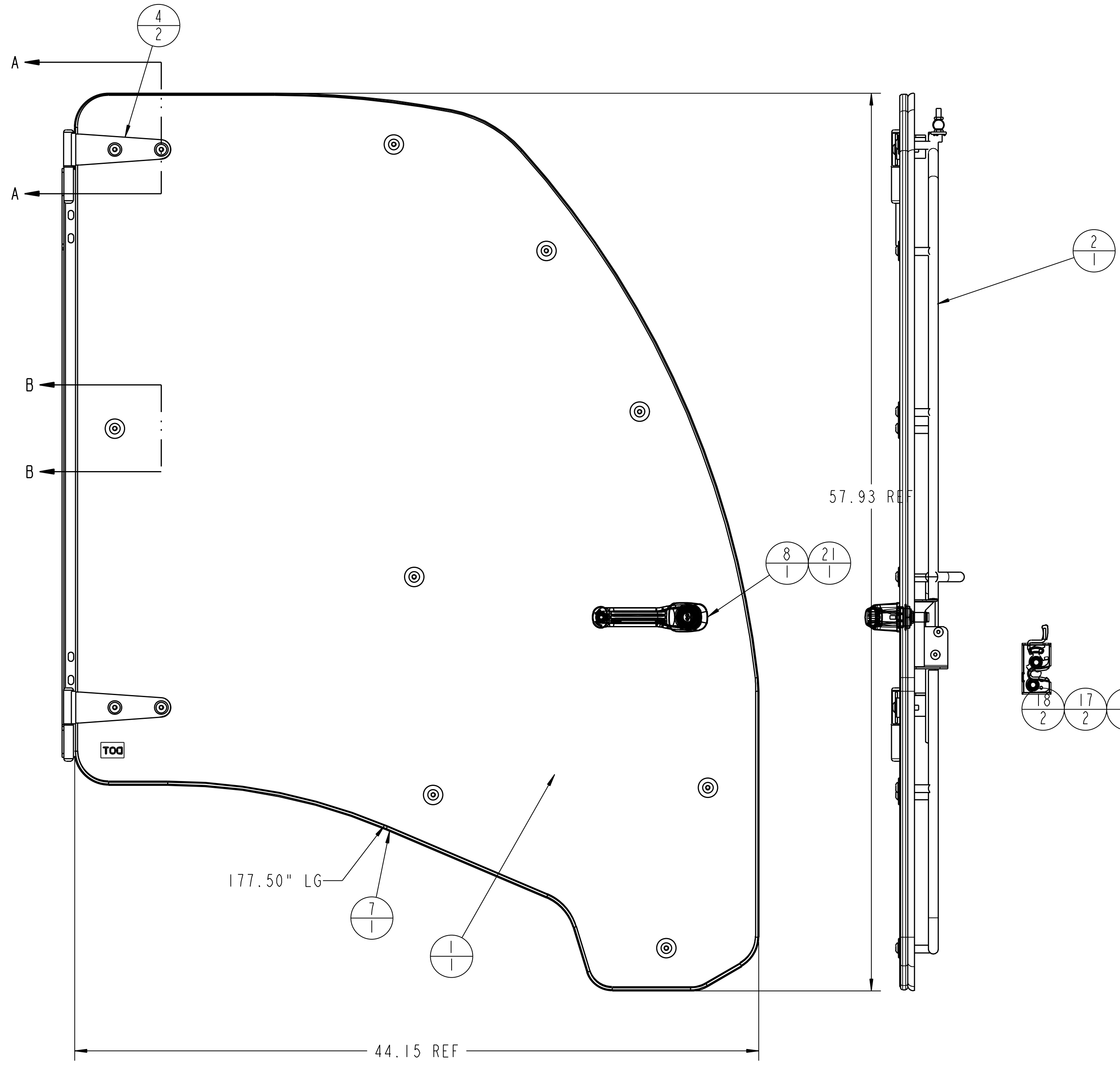
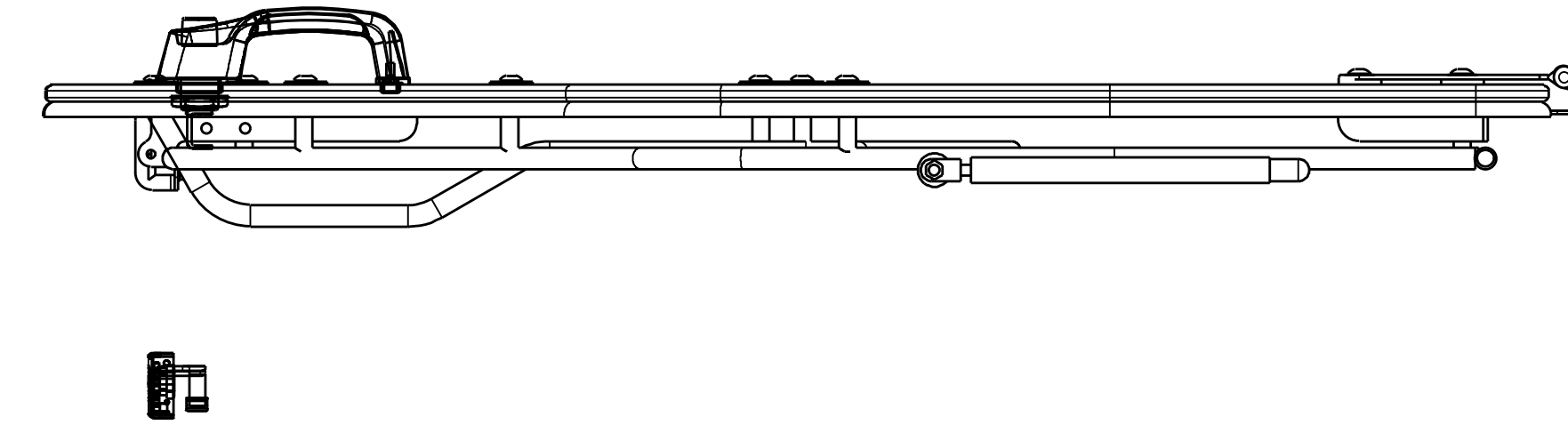
REV	DCR NO.	DESCRIPTION	DRAFTSMAN	DATE
A	9934	CHANGED BOLT LENGTH SECTION A-A	LPJ	11/25/10
B	10016	LATCH 3-19309 WAS 3-19308	CAD	12/8/10



SECTION A-A
SCALE 0.500



SECTION B-B
SCALE 0.500



SCALE 0.200

ITEM #	DESCRIPTION	QTY
1	3-19500_DOOR_GLASS_TORO_5800_MR	1
2	2-16598_DOOR_FRAME_RH_MIR	1
3	2-16604_DOOR_MOUNT_RH_MIR	1
4	2-16504_HINGE_DOOR_WELDMENT_MR	2
5	3-15971_HINGE_WASHER_MIR	2
6	3-19309_LATCH_DLP_MIR_REF_-1	1
7	3-19324_BUB_RUB_MIR_177_50	1
8	3-19307_HANDLE_EXTERI_SWI_MIR	1
9	3-16217_GLASS_WASHER_MR	24
10	3-10085_3125_WASHER_MIR	8
11	3-19342_MSCR_313X150_TRUSS_TORX	4
12	3-10072_3125_NYLOCK_MIR	4
13	3-18187_31_FENDER_WASHER_MR	8
14	3-18324_313_18_NC_125_TH_TRX_MR	8
15	3-10076_250_LOCK_WASHER_MIR	1
16	3-18312_MSCR_M6X20_TH_TORX_MIR	1
17	3-18453_MSCR_312-18X125_FH_TRX_	2
18	3-17111_SER_FLNG_NUT_312_MIR	2
19	3-11821_BALL_STUD_MIR	2
20	3-13024_GAS_SPRING_6IN_20_MIR	1
21	3-19325_FOAM_SPACER_DOOR_MIR	1

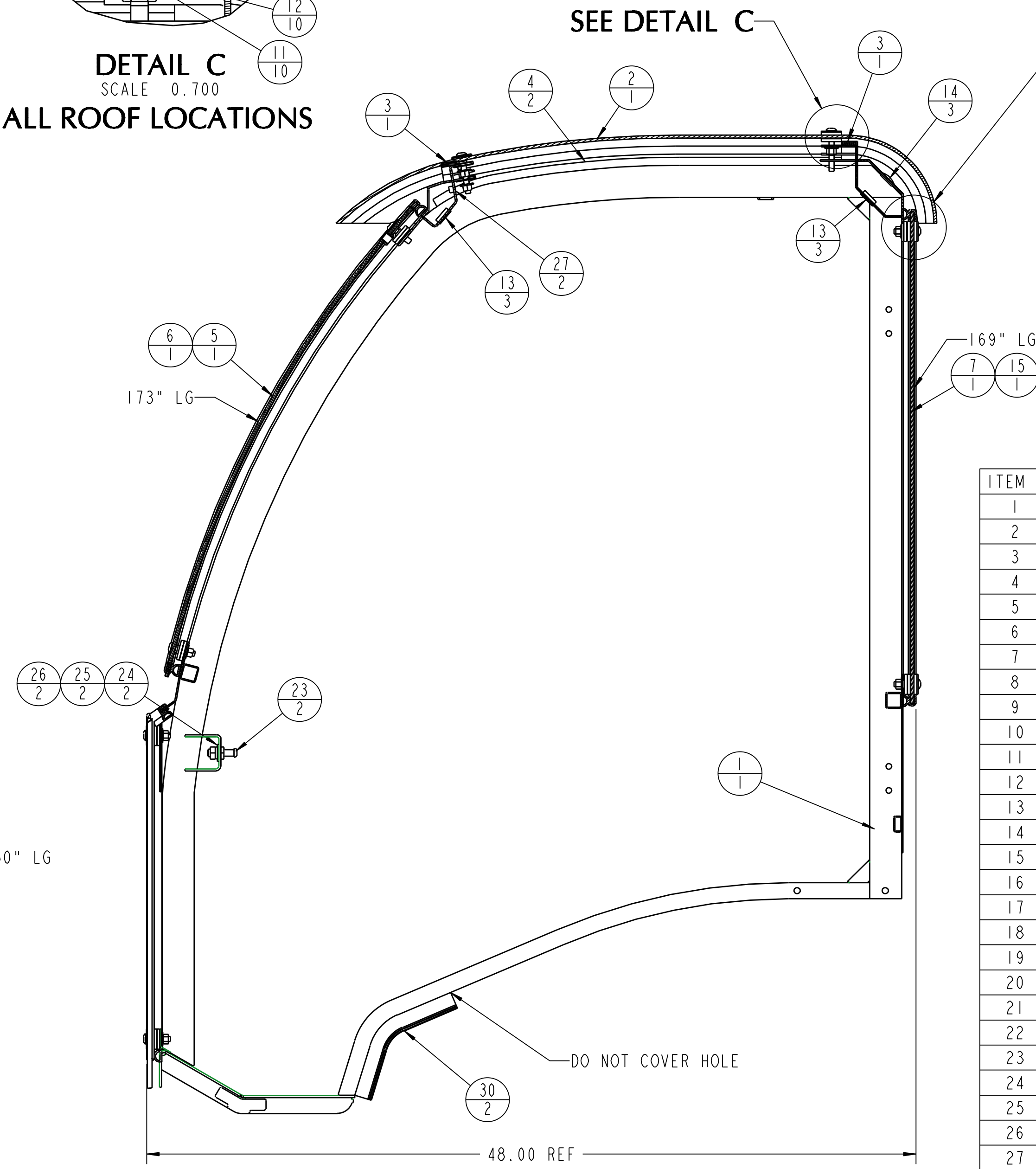
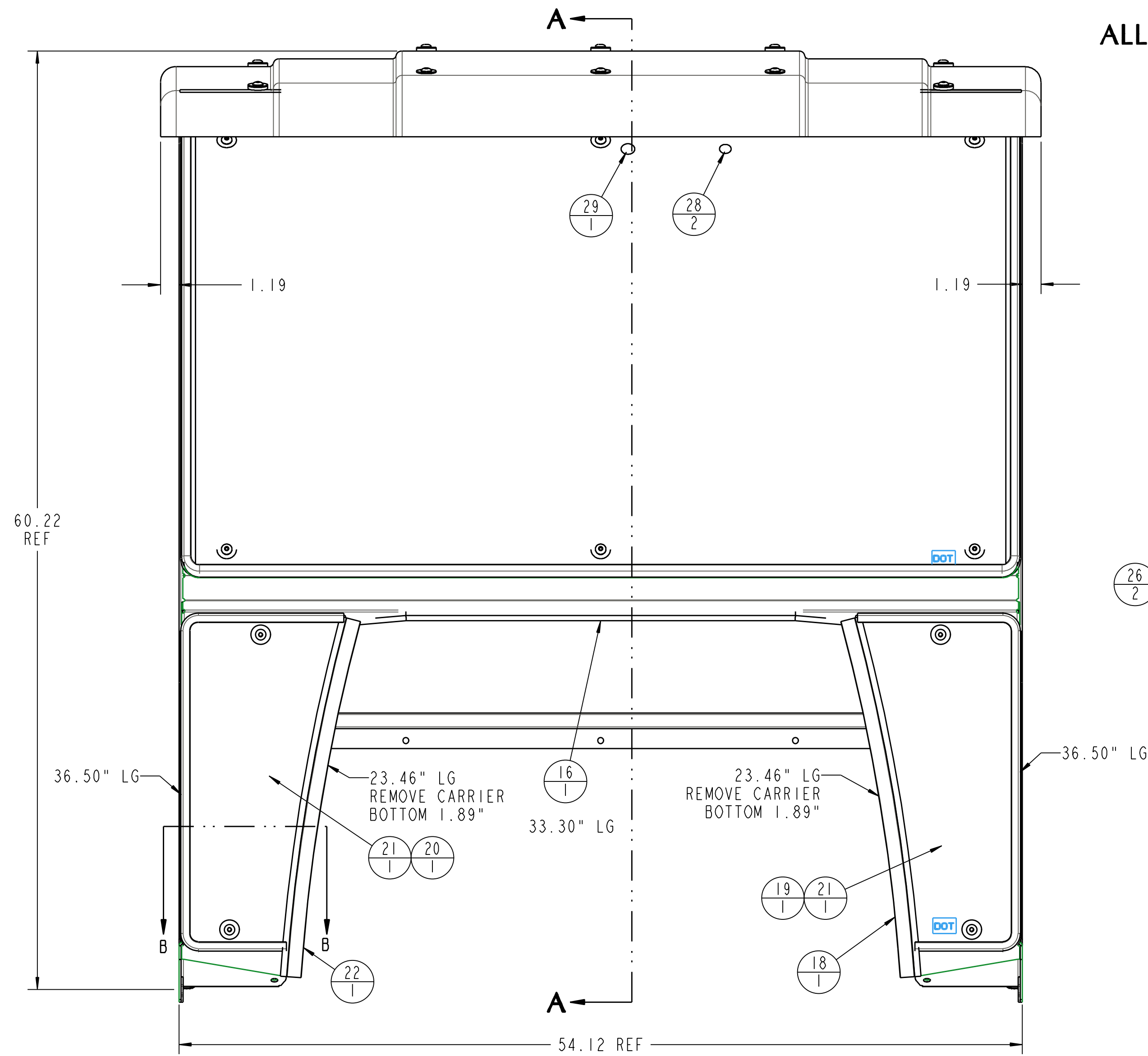
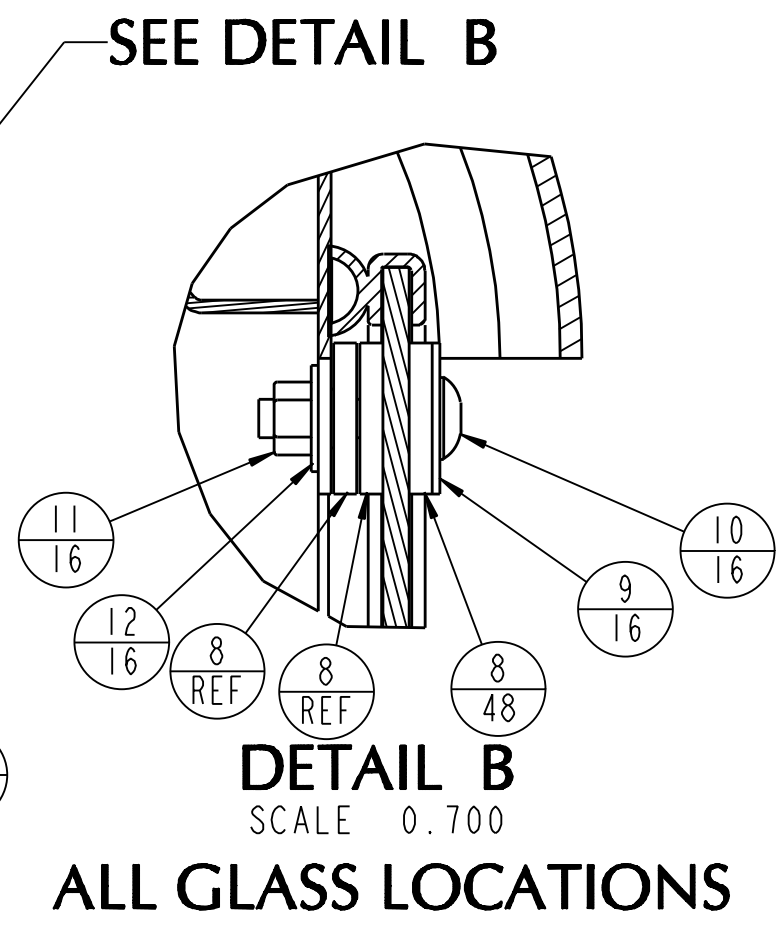
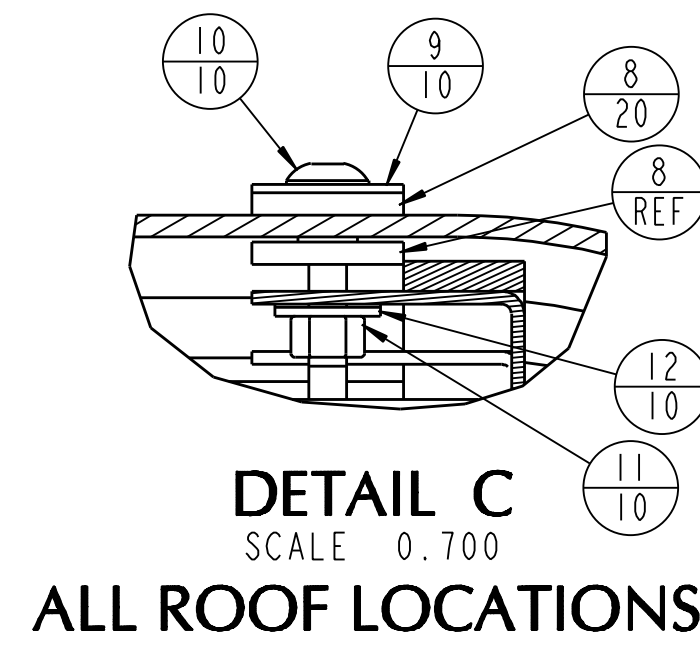
WEIGHT = 56.2 LBS

REFERENCE MIRROR PART 4-15536

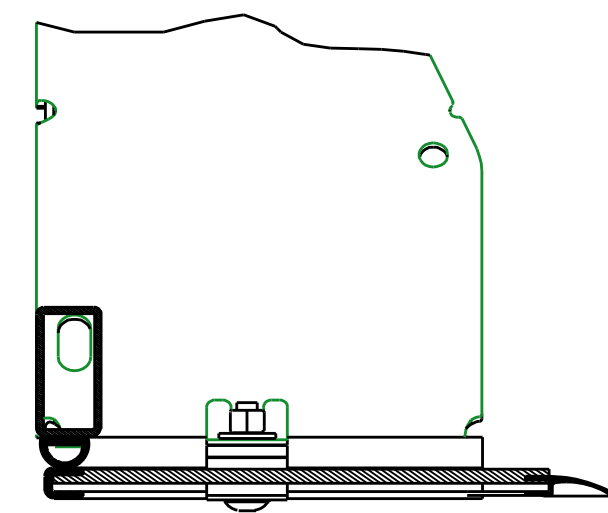
THIS DOCUMENT CONTAINS CONFIDENTIAL INFORMATION AND IS THE PROPERTY OF CUSTOM PRODUCTS OF LITCHFIELD, INC. AND MAY NOT BE COPIED, REPRODUCED OR DISCLOSED IN ANY MANNER WITHOUT EXPRESSED WRITTEN CONSENT FROM CUSTOM PRODUCTS OF LITCHFIELD, INC.

TOLERANCES UNLESS NOTED OTHERWISE	CUSTOMER NAME & MOD NO: A-11836 TORO 5800 MY 10	MATL SPEC:
X ± .09 XX ± .06 XXX ± .03 HOLE SIZE /05/10 ANGLE ± 5°	CUSTOM PRODUCTS 1715 SOUTH SIBLEY AVE LITCHFIELD, MN 55355	
TITLE	DRWG NO.	REV LEVEL
DOOR ASM RH	4-15537 1 of 1	B
DRWN: CAD	DATE: 04-22-10	

REV.	DCR NO.	DESCRIPTION	DRAFTSMAN	DATE
A	9939	ADDED ITEMS 28 & 29; ADDED SECTION A-A AND DETAIL VIEWS B & C	CAD	10-15-10
B	9934	ADDED ITEM 28 AND NOTE	MRB	10-21-10
C	9957	ADDED ITEM 24 & 25; EXTENDED FLAT SEAL AND ADDED SECTION B-B	MRB	10-25-10
D	9934	ITEM 10 3-19342 WAS 3-18538	LPJ	10/26/10



ITEM #	DESCRIPTION	QTY
1	2-16599_CAB_WELDMENT	1
2	3-19501_ROOF_PANEL_ABS_WHITE	1
3	3-18805_FOAM_1X1X55LG	2
4	3-18805_FOAM_SEAL_1X1X26_LG	2
5	3-19499_FRONT_WINDOW_TORO_5800	1
6	3-19324_BUB_RUB_FRONT_173	1
7	3-19502_REAR_WINDOW	1
8	3-16217_GLASS_WASHER	68
9	3-18187_31_FENDER_WASHER	26
10	3-19342_MSCR_313X150_TRUSS_TORX	26
11	3-10072_3125_NYLOCK	26
12	3-10085_3125_WASHER	26
13	3-18552_GROMMET_SNAP_UNIV_1_00	6
14	3-17390_1_HOLE_PLUG	3
15	3-19324_BUB_RUB_REAR_169	1
16	3-18829_BUB_RUB_33_3_LG	1
17	3-15658_BUB_RUB_33_3_LG	1
18	3-19349_FLAP_SEAL_23_46	1
19	3-19324_BUB_RUB_LO_36_50	1
20	3-19324_BUB_RUB_MIR_36_50	1
21	3-19503_WINDOW_FRONT_LO	2
22	3-19349_FLAP_SEAL_MIR_23_46	1
23	3-18069_STRIKER_DLP_10MM	2
24	3-12466_WASHER_50_TYPE_A_N	2
25	3-10079_50_LOCK_WASHER	2
26	3-18070_JAM_NUT_FOR_10MM_STRKR	2
27	3-14387_25_NUT-SERT	2
28	3-19336_RACHET_PLUG_375_X_250	2
29	3-19337_HOLE_PLUG_750_X_THICK	1
30	3-17865_D-SEAL-9.5IN-LONG	2

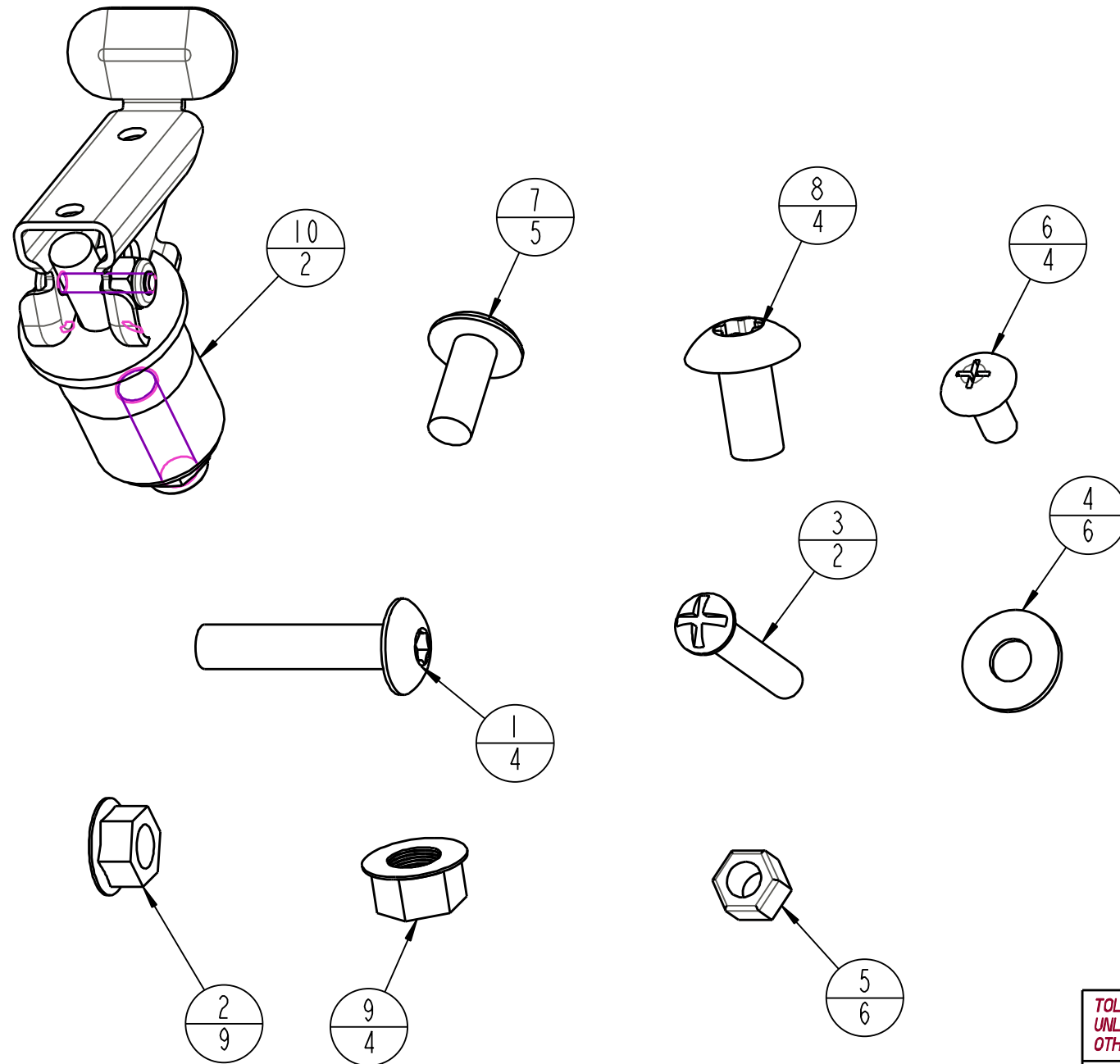


WEIGHT = 206.0 LBS

THIS DOCUMENT CONTAINS CONFIDENTIAL INFORMATION AND IS THE PROPERTY OF CUSTOM PRODUCTS OF LITCHFIELD, INC. AND MAY NOT BE COPIED, REPRODUCED OR DISCLOSED IN ANY MANNER WITHOUT EXPRESS WRITTEN CONSENT FROM CUSTOM PRODUCTS OF LITCHFIELD, INC.

TOLERANCES UNLESS NOTED OTHERWISE	CUSTOMER NAME & MOD NO. A-11836 TORO 5800 MY 10	MATL SPEC
	CUSTOM PRODUCTS 1715 SOUTH SIBLEY AVE LITCHFIELD, MN 55365	
X ± .09 XX ± .06 XXX ± .03 HOLE SIZE 1/64-1/32 ANGLE ± 5°	TITLE CAB SHELL ASSEMBLY	DRWG NO. 4-15538 1 of 1
	DRWG SIZE D	REV LEVEL D
	DATE 04-21-10	

REV.	DCR NO.	DESCRIPTION	DRAFTSMAN	DATE
A	9934	3-19342 WAS 3-18538	LPJ	10/27/10



ITEM #	DESCRIPTION	QTY
1	3-19342_MSCR_313X150_TRUSS_TORX	4
2	3-17111_SER_FLNG_NUT_312	9
3	3-10101_MSCR_25_RHSL	2
4	3-10084_250_WASHER	6
5	3-10070_25_NYLOCK	6
6	3-17057_25X500_TH_PHIL	4
7	3-19340_MSCR_313X75_TRUSS_TORX	5
8	3-17805_375_75BH_TRX	4
9	3-17622_SER_FLG_NUT_375-16	4
10	3-19295_ASM_LOCKED	2
11	05-11069_MOUNT_INSTR_A-11836	1
12	3-16265_BAG_ZIPLOCK_10X12	1

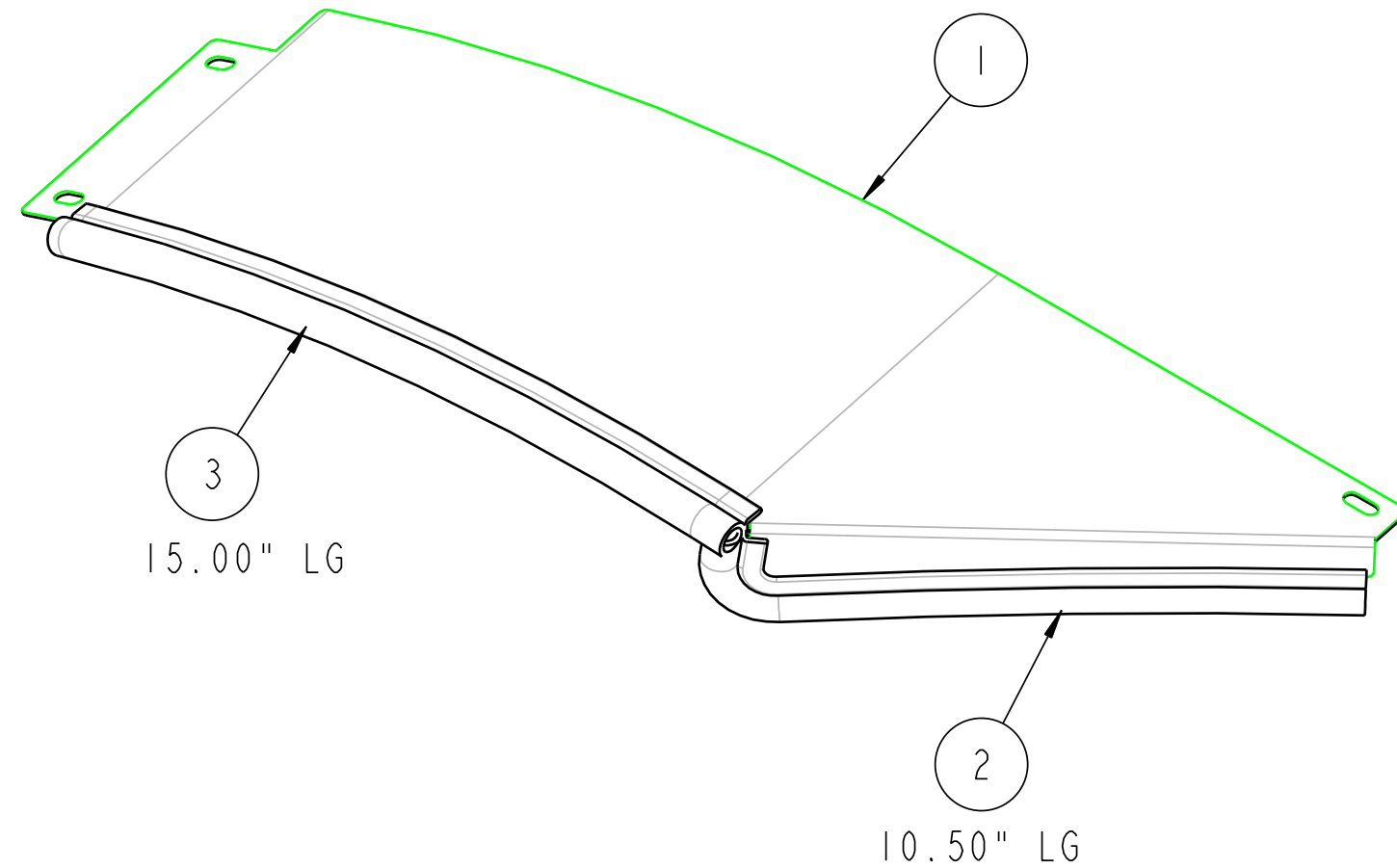
SCALE 1.000

THIS DOCUMENT CONTAINS CONFIDENTIAL INFORMATION AND IS THE PROPERTY OF CUSTOM PRODUCTS OF LITCHFIELD, INC. AND MAY NOT BE COPIED, REPRODUCED OR DISCLOSED IN ANY MANNER WITHOUT EXPRESSED WRITTEN CONSENT FROM CUSTOM PRODUCTS OF LITCHFIELD, INC.

TOLERANCES UNLESS NOTED OTHERWISE X ± .09 XX ± .06 XXX ± .03 HOLE SIZE +.015/-.010 ANGLE ± .5°	CUSTOMER NAME & MOD NO.: A-11836 TORO 5800 MY 11		MATL SPEC:	
	CUSTOM PRODUCTS 1715 SOUTH SIBLEY AVE. LITCHFIELD, MN 55355		DRAWN: CAD	DATE: 06-10-10
TITLE HARDWARE KIT		DRWG SIZE B	DRWG NO. 4-15539	REV LEVEL A

NAME:CAD2 OBJECT:4-15568 DATE:10-Jun-10 15:47:26

REV.	DCR NO.	DESCRIPTION	DRAFTSMAN	DATE
------	---------	-------------	-----------	------



SCALE 0.333

ITEM #	DESCRIPTION	QTY
1	1-47039_FENDER_SEAL_PANEL_LH	1
2	3-18110_BUB_RUB_10_50_LG	1
3	3-18110_BUB_RUB_15_LG	1

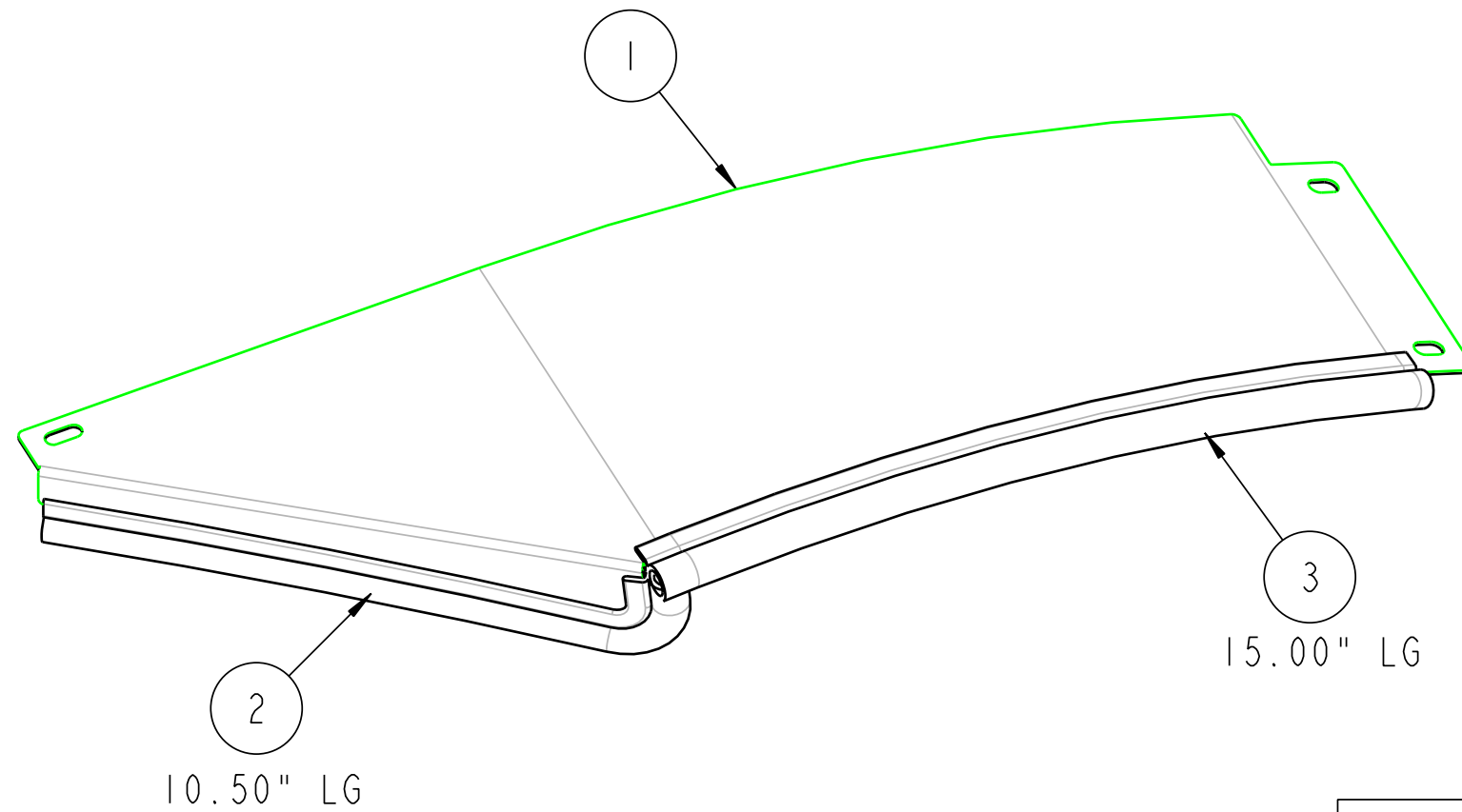
QTY=1 PER ASM
REF MIRROR RH ASM 4-15569

THIS DOCUMENT CONTAINS CONFIDENTIAL INFORMATION AND IS THE PROPERTY OF CUSTOM PRODUCTS OF LITCHFIELD, INC. AND MAY NOT BE COPIED, REPRODUCED OR DISCLOSED IN ANY MANNER WITHOUT EXPRESSED WRITTEN CONSENT FROM CUSTOM PRODUCTS OF LITCHFIELD, INC.

TOLERANCES UNLESS NOTED OTHERWISE .X ± .09 .XX ± .06 .XXX ± .03 HOLE SIZE 1.05/.010 ANGLE ± .5°	CUSTOMER NAME & MOD NO.: A-11836 TORO 5800 MY 11		MATL SPEC:	
	CUSTOM PRODUCTS 1715 SOUTH SIBLEY AVE. LITCHFIELD, MN 55355		DRWG SIZE B	DRWG NO. 4-15568
TITLE FENDER PANEL ASM, LH			REV LEVEL -	DATE 06-10-10
DRAWN: CAD		DATE: 06-10-10		

NAME:CAD2 OBJECT:4-15569 DATE:11-Jun-10 08:18:48

REV.	DCR NO.	DESCRIPTION	DRAFTSMAN	DATE
------	---------	-------------	-----------	------



SCALE 0.333

ITEM #	DESCRIPTION	QTY
1	1-47040_FENDER_SEAL_PANEL_RH	1
2	3-18110_BUB_RUB_MIR	1
3	3-18110_BUB_RUB_15_LG_MIR	1

QTY=1 PER ASM
REF MIRROR RH ASM 4-15568

THIS DOCUMENT CONTAINS CONFIDENTIAL INFORMATION AND IS THE PROPERTY OF CUSTOM PRODUCTS OF LITCHFIELD, INC. AND MAY NOT BE COPIED, REPRODUCED OR DISCLOSED IN ANY MANNER WITHOUT EXPRESSED WRITTEN CONSENT FROM CUSTOM PRODUCTS OF LITCHFIELD, INC.

TOLERANCES UNLESS NOTED OTHERWISE .X ± .09 .XX ± .06 .XXX ± .03 HOLE SIZE +.015/-0.010 ANGLE ± .5°	CUSTOMER NAME & MOD NO.: A-11836 TORO 5800 MY 11	MATL SPEC:	
	CUSTOM PRODUCTS 1715 SOUTH SIBLEY AVE. LITCHFIELD, MN 55355		
TITLE FENDER PANEL ASM, RH	DRWG SIZE B	DRWG NO. 4-15569	REV LEVEL -
	DRAWN: CAD	DATE: 06-10-10	