



A-12001

REAR WORK LIGHT KIT

(LIGHT INCLUDED)

The tractors do not come with rear work lights. This kit is for installation of (1) one 37.5 watt work light. Do not substitute higher wattage bulb into light housing! Total current draw should not exceed 3.3 amps at 12 VDC. **Do not substitute higher wattage bulbs!**

Do not exceed the machine's available alternator capacity. If you do not know how much current is available, contact your dealer or manufacturer of this machine, prior to installing this kit.

This kit is for use with cab kit A-11976, which includes a main feed breaker and relay wire harness and 6-slot fuse block, already install in the cab's overhead switch panel from the factory. Light is to be mounted on rear of cab, with or without beacon kit.

Before you begin, read these instructions and identify components. Please retain these instructions for future reference and parts ordering information.

Kit Components:	ITEM	QTY	DESCRIPTION	PART NO.
	1	1	REAR LIGHT MOUNT BRACKET	1-48301
	2	2	BOLT, TRUSS BUTTON 5/16 x 3/4" LONG	3-19340
	3	2	NUT, FLANGED, 5/16	3-17111
	4	1	ROCKER SWITCH, OFF-ON	3-18189
	5	1	ROCKER SWITCH ACTUATOR, LIGHTS	3-18514
	6	4	NYLON TIE	3-16629
	7	6	NYLON TIE WITH 1/4" RETAINER TREE	3-19594
	8	1	FUSE, 7.5 AMP	3-16581
	9	1	WIRE HARNESS, FUSE BLOCK TO SWITCH	3-19686
	10	1	WIRE HARNESS, REAR LIGHT	3-19662
	11	1	LIGHT, ROUND, 70mm 12v 37.5 WATT	3-19997

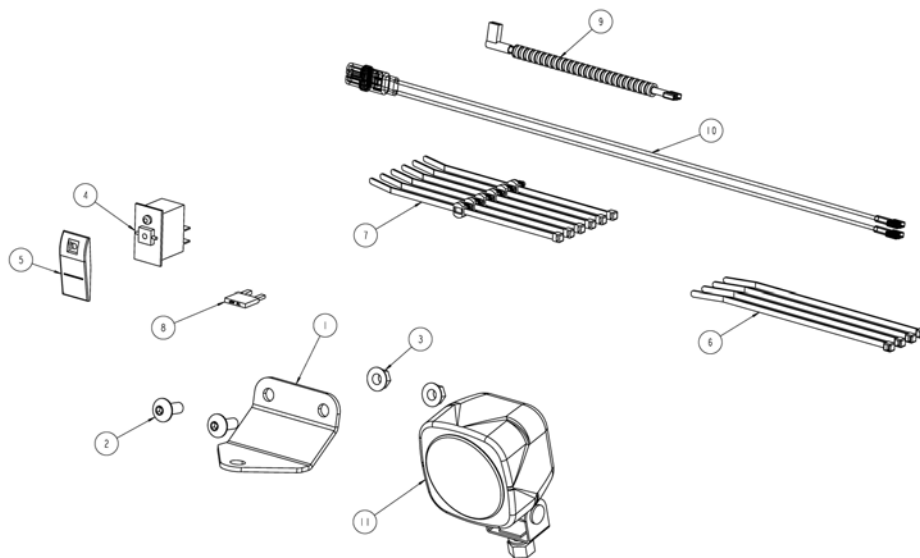


Figure 1

Installation Steps:

1. Remove the (2) 5/16" bolts that secure the switch panel to the cab frame header area.
2. Remove rear roof bolts and place a block to gap the roof 2-3" above the rear cross member.
3. Secure light (Item 11) to mount bracket (Item 1) using the existing light bracket mount hardware. **(Figure 2).**
4. If warning beacon kit is installed on cab, remove beacon and bracket from rear cross member **(Figure 3).**

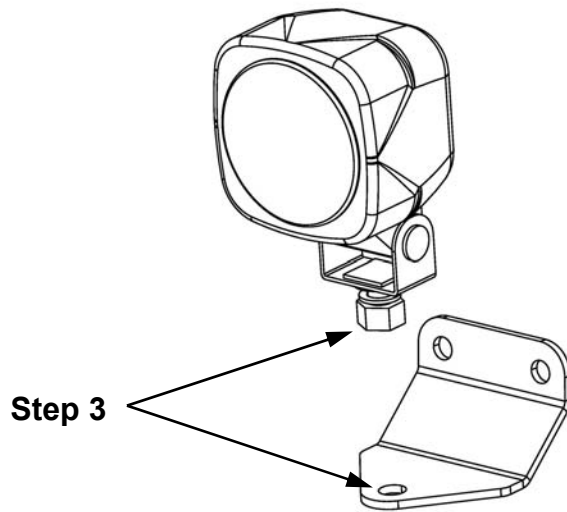


Figure 2

5. Remove (2) 3/8" hole plugs from middle of rear cross member.
6. Secure rear light and mount bracket to rear cross member (Install or re-install warning beacon if required, using **(Figure 3 & 4)**;
(2) 5/16 x 3/4" long button head bolts (Item 2)
(2) 5/16" flange nuts (Item 3)

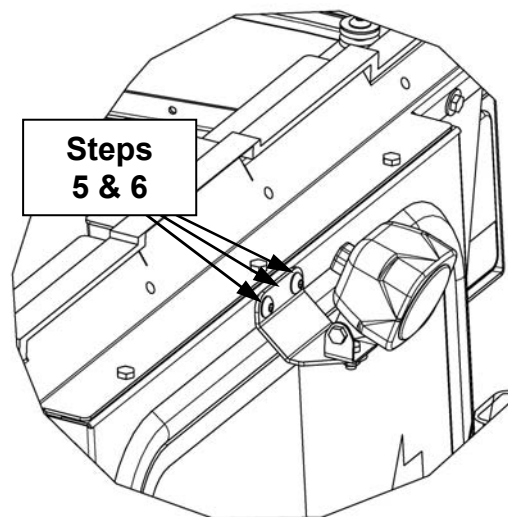


Figure 3

7. Locate wire harness with light connector end (Item 10). Connect light end of wire harness to light (Figure 4).
8. Route opposite end of wire harness, between roof and cross member, from rear of cab, along RH side channel, to the front switch panel area.
9. Select an empty location on switch panel for rocker switch (Item 4). Remove rectangular knockout (Figure 4).
10. Route **brown** wire of harness through switch knockout and connect to rocker switch terminal 3. Refer to labels on harness (Figure 6) for correct wire connections.
11. Connect **black** wire of harness labeled -12VDC Lights to ground terminal of fuse block (Figure 5).
12. Remove fuse block access cover from headliner and select an empty fuse terminal location.
13. Locate the shorter fuse block to switch wire harness 3-19686 (Item 9). Connect 90 degree connector of wire to empty fuse terminal location, selected in step 9 (Figure 5).
14. Connect straight connector of wire through switch knockout hole and connect to rocker switch terminal 2 (Figures 4 & 6).
15. Attach switch actuator (Item 5) to rocker switch (Item 4) then install switch into knockout (Figure 4).
16. Install 7.5 amp fuse into fuse block location selected in Steps 9-13 (Figure 5).
17. Remove block and lower roof. Re-secure back of roof.

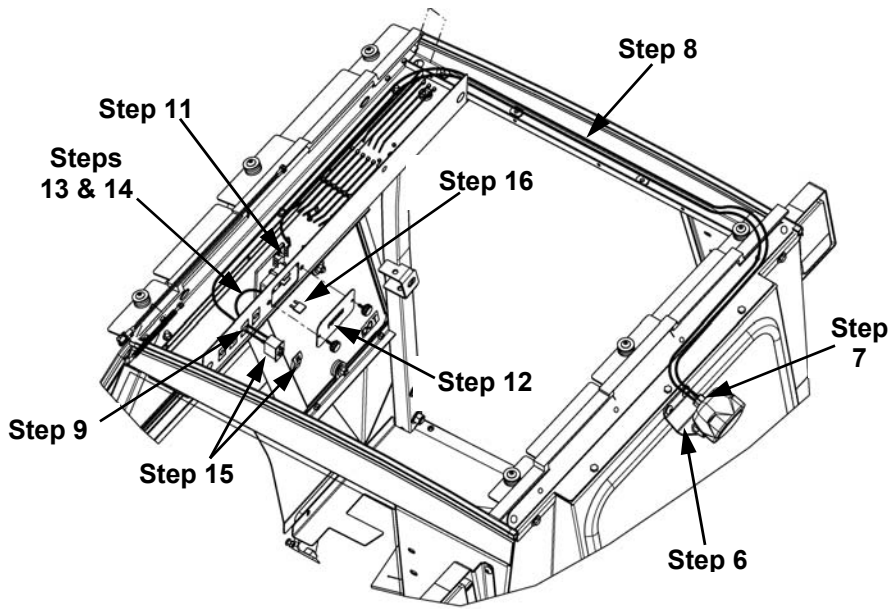


Figure 4
(Roof not shown)

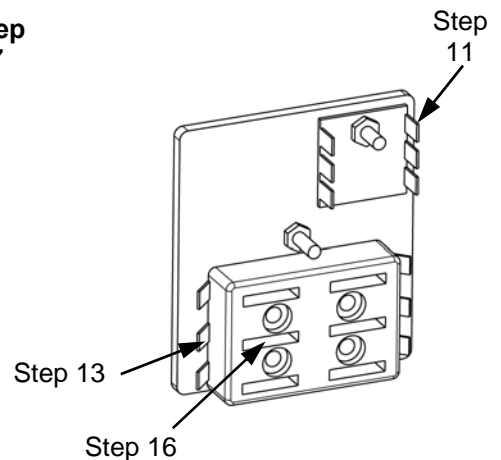


Figure 5

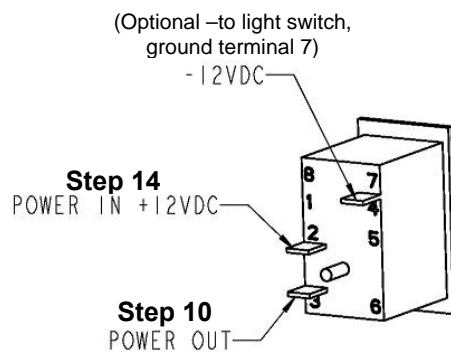


Figure 6

ROCKER SWITCH 3-18189
20A MAX AT 12VDC
TYPICAL SWITCH WIRING

05-11301
November 17, 2014

Completing installation:

18. Turn tractor's ignition key to "On".
19. Turn lights on and off to check proper operation. Check coverage area and adjust lights if needed.
20. Secure wire harness using nylon ties with ¼" retainer (Item 7) at inside header locations shown in **Figures 7 & 8**. Note: If beacon kit is to be installed, secure both wire harnesses at the same time.
21. Secure switch panel to cab frame and fuse block access cover to switch panel.

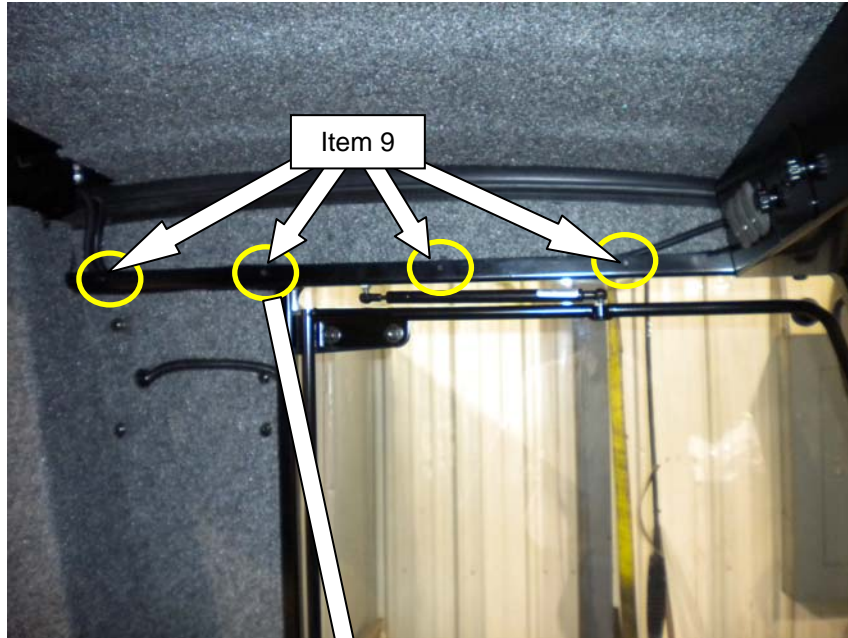


Figure 7



Figure 8

Manufactured by:

SP CUSTOM PRODUCTS
OF LITCHFIELD, INC.
BOX 70 • LITCHFIELD, MINNESOTA 55355-0070
(320) 693-3221 Fax: (320) 693-4833
www.CPcabs.com

05-11301
November 17, 2014