

COZY CABS

MOUNTING INSTRUCTIONS



With Parts Listing
and Drawings for
JOHN DEERE
655, 755, 855, 955
ROPS Cab

Also With Supplemental
Instructions For Mounting
MODEL 70 LOADER
On **JOHN DEERE 755**
ROPS Cab

OPTIONAL KITS:

Flasher Kit (Roof Mounted): 4-10693

Headlight Kit: 4-10865

Defroster Fan Kit: 4-10993

Heater Kit: 4-11962



Manufactured by:

CUSTOM PRODUCTS
OF LITCHFIELD, INC.

BOX 718 • LITCHFIELD, MINNESOTA 55355
(612) 693-3221 Fax: (612) 693-7252
1-800-222-5463

05-10162
Sept. 1995

SAFETY INSTRUCTIONS

Read operator's manual. Be thoroughly familiar with the controls, capabilities, and proper use of the equipment.

NEVER ALLOW ANY RIDERS.

Thoroughly inspect Roll Bar and Roll Bar Mounting periodically.

Stay alert for hidden hazards and traffic.

Avoid sudden starts, excessive speeds, and sudden stops when operating on hillside, rough ground and most off-the-road operations.

Use extreme care when working close to fences, ditches, or on hillsides.

Wait for tractor to STOP before dismounting.

Check clearance carefully before driving under any objects.

Avoid operating sideways on a steep slope whenever possible.

ALWAYS buckle safety belt while operating tractor.

Never exceed factory recommended specifications.

Do not weld, cut, drill or modify ROPS in any manner unless instructed by manufacturer.

ROLL BAR SPECIFICATIONS

MODEL	MAXIMUM WEIGHT CAPACITY (Tractors and Implements.)
655	4020#
755	4020#
855	4020#
955	4020#

MOUNTING INSTRUCTIONS

John Deere 655, 755, 855, 955 ROPS Cab

1. Preparation of tractor.

- A. Remove 2-Post Roll Bar from tractor.
- B. Disconnect and remove both headlights and bellows from tractor.
- C. Remove grab handles from fenders.
- D. Remove flashers from fenders.
- E. Remove seat and suspension for easier panel installation.
- F. Remove left engine side panel, cowl panel and P.T.O. lever, Figure #1.
- G. On the 655 model #51 loader, the brace on the loader tower may have to be ground to clear the lower front filler panels of cab, Figure #2-A.

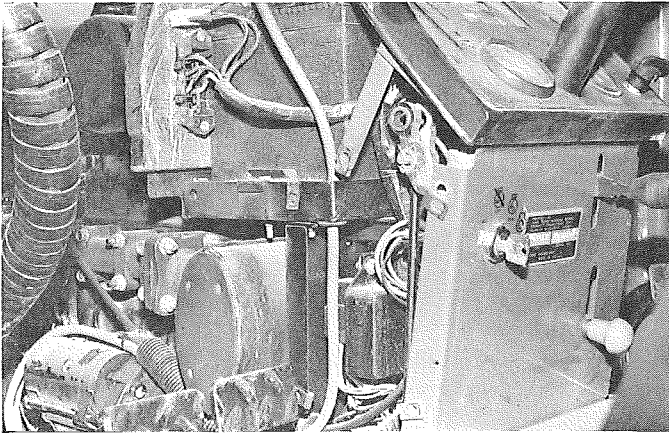


Figure 1

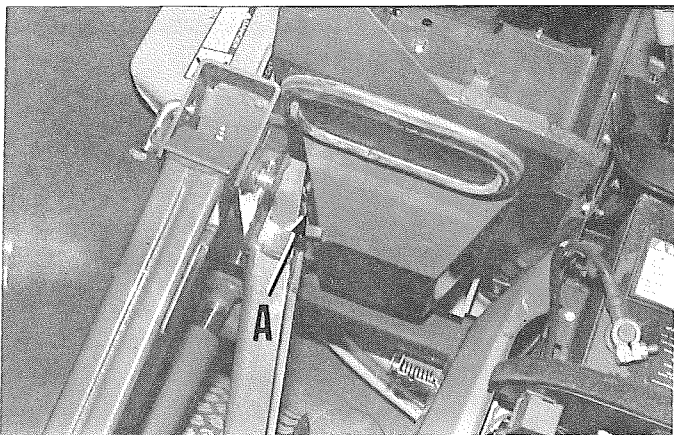


Figure 2

2. Installation of P.T.O. lever and headlight panels.

- A. Install P.T.O. lever supplied with cab in the same manner as the original one was removed, Figure #3-A. **NOTE:** Before replacing side cowl panel be sure the lever operates correctly.
- B. Place headlight filler panels in the area that the bellows were removed and use the holes prepunched in these parts as a template and drill 7/32" dia. holes into the tractor fenders and fasten with 10-32 trusshead screws, lockwashers and nuts. **NOTE:** Be sure that point A on Figure #4 meets corner to corner so that there is a smooth transition for the cab to seal on.

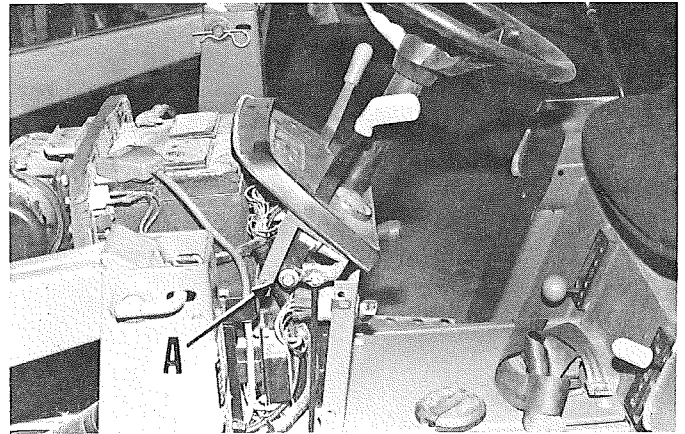


Figure 3

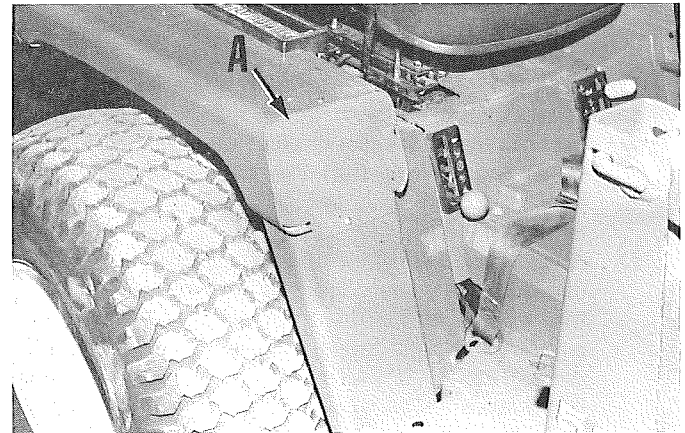


Figure 4

3. Installation of rear mounts and sway brace brackets.

- A. Install right and left brackets onto tractor using 16mm x 2.00 x 130 & 140mm Gr. 8.8 bolts, Figure #5-A, and 1mm x 2.00 x 40mm long Gr. 8.8 bolts, Figure #5-B. **(DO NOT TIGHTEN).**

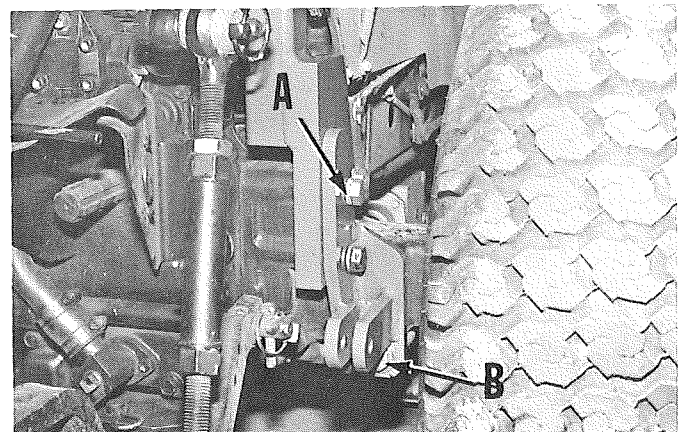


Figure 5

4. Installation of cab (755 & 855).

- A. Remove windshield and raise hood.
- B. Lower cab onto tractor and when holes in rear cab mount line up with holes in rear mounts, install 1/2" x 1 1/4" Gr. 5 bolts, lockwashers, nuts and flatwashers on both sides, Figure #6-A.

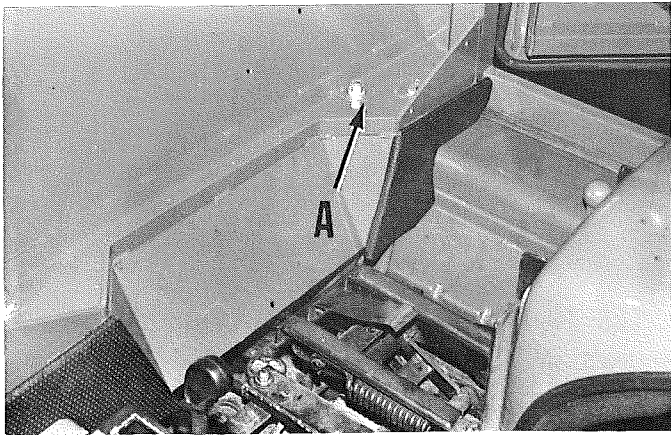


Figure 6

- C. Fasten front cab mounts to existing holes in tractor platforms with three 3/8" x 1 1/4" bolts, flatwashers, lockwashers and nuts per side, Figure #7-A. Make sure that the cab is centered on tractor and all seals are adjusted properly, then tighten all bolts.
- D. After the bolts have been tightened, the vinyl insulation that is glued to the cab should be trimmed to allow the hood to open and close without tearing it loose from the cab. **NOTE:** Do this carefully so too much is not removed and thus leaves air gaps when hood is closed, Figure #11-A.
- E. The windshield can be replaced on the cab at this time. **NOTE:** The hood panel and hinges have slots so if any adjustment is needed for a sufficient seal around hood it can be done here.

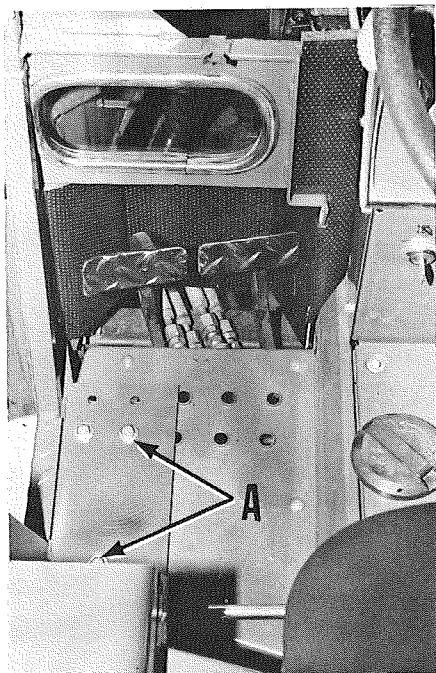


Figure 7

- F. The selective control valve handle shown in Figure #8-C may have to be modified for proper operation in all directions after cab is installed.

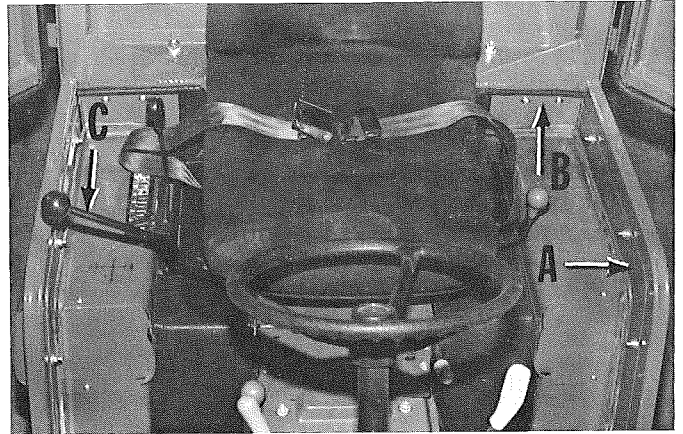


Figure 8

5. Installation of cab (655).

- A. Due to the difference in fender heights of the 655, fender filler panels will have to be mounted to cab frame before installing on tractor.
- B. Remove clip on rubber from cab fender tubing. Then install side fender filler panels to cab using 1/4" x 3/4" trusshead screws, flatwashers, lockwashers and nuts, Figure #8-A.
- C. Install rear fender filler to inside of cab using 1/4" x 3/4" trusshead screws, flatwashers, lockwashers and nuts, Figure #8-B.
- D. Reinstall clip on rubber to fender filler panel.
- E. After the above is complete follow the same procedures in Item 4 of the mounting instructions to install cab onto tractor.



Figure 9

6. Installation of dustshield filler panels.

- A. Install dustshield onto tractor as shown in Figure #9 and fasten to cab frame with 1/4" x 3/4" trusshead screws, flatwashers, lockwashers and nuts. **NOTE:** Some trimming of vinyl insulation may be needed for a satisfactory fit.

- B. The 655 tractor needs additional filler panels as shown in Figure #10. Join the top dustshield to lower filler panels with a 1/4" x 3/4" trusshead screw, Figure #10-A. Using a prepunched hole in the bottom lip of filler panel as a template, drill a 13/64" dia. hole through tractor platform and fasten with a 1/4" sheet metal screw, Figure #10-B.

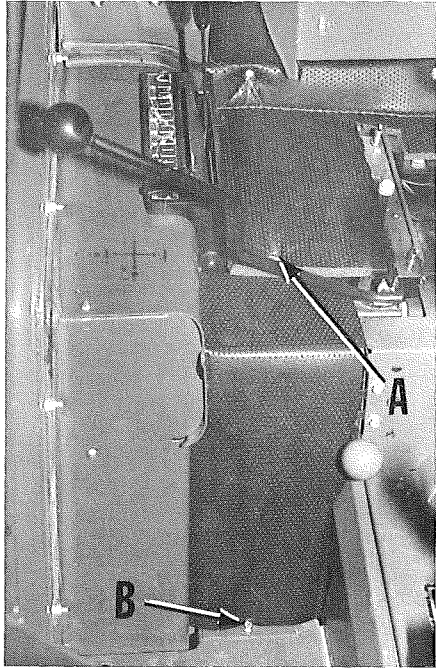


Figure 10

7. Installation of pedal pocket filler panels.

- A. Install left and right filler panels inside of lower front corners of cab using 1/4" x 3/4" trusshead screws, flatwashers, lockwasher and nuts, Figure #12 and #13-A.

8. Installation of floor mats.

- A. Install floor mats in cab. This floor mat is designed to fit reasonably close, but due to slight model changes or added accessories different from the machine we designed on, you may find it necessary to trim the mat to fit your requirements.

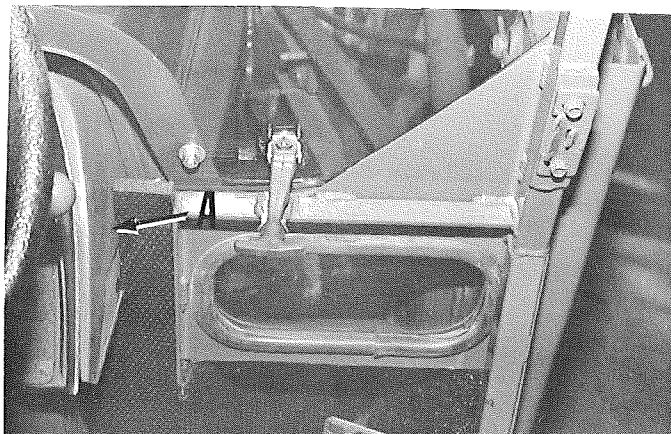


Figure 11

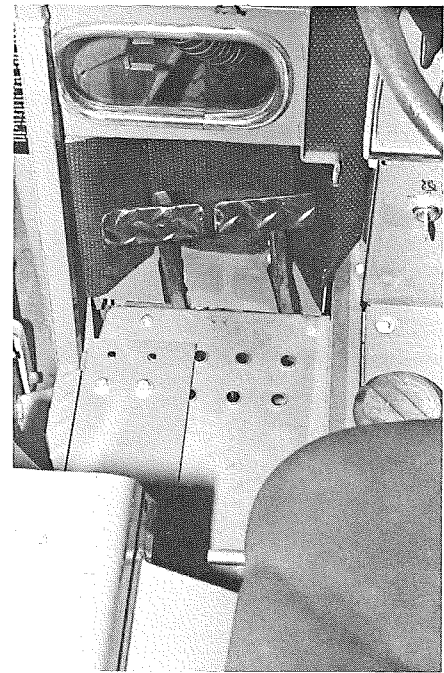


Figure 12

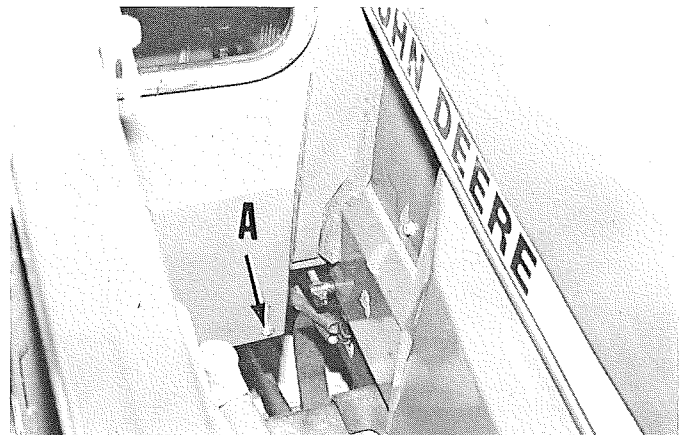
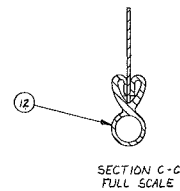
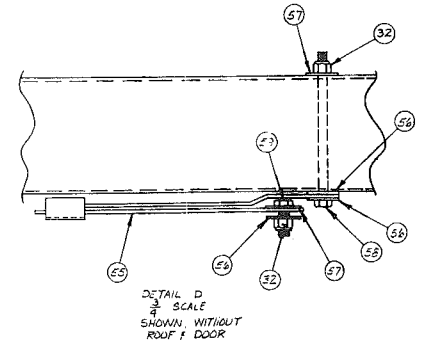
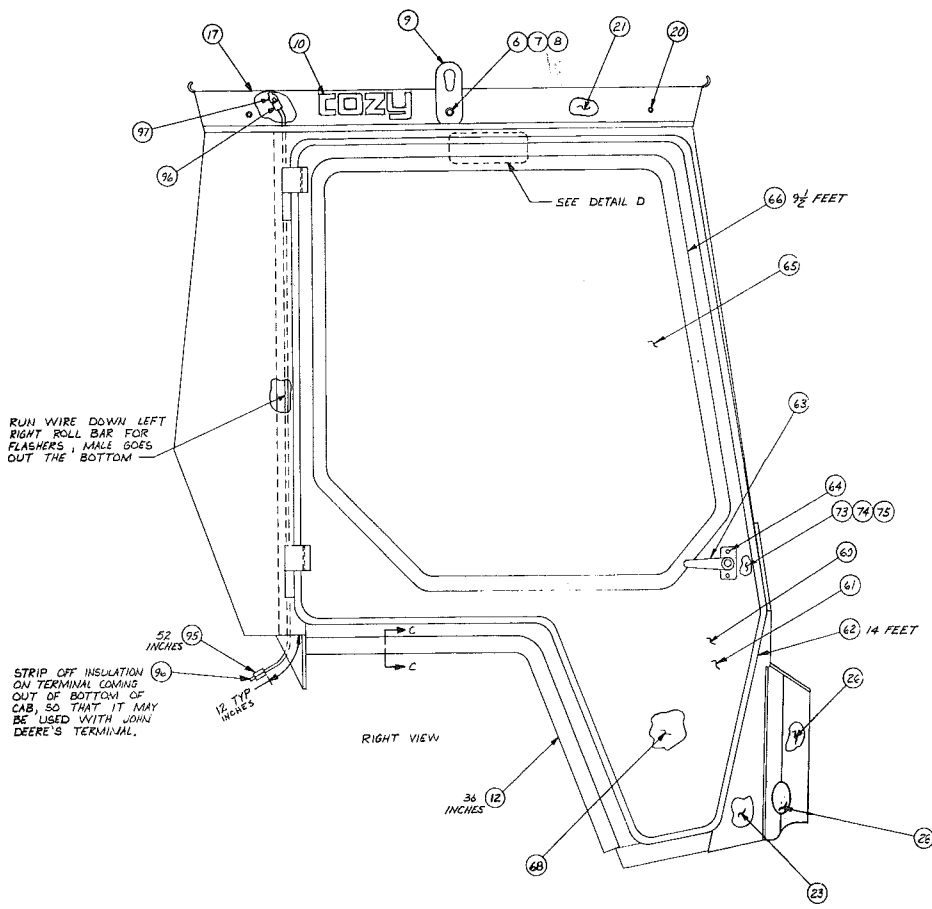
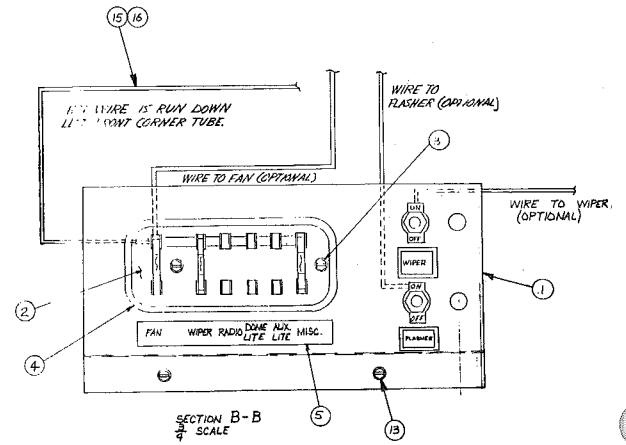
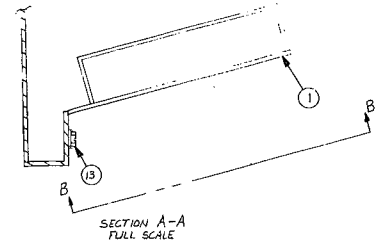
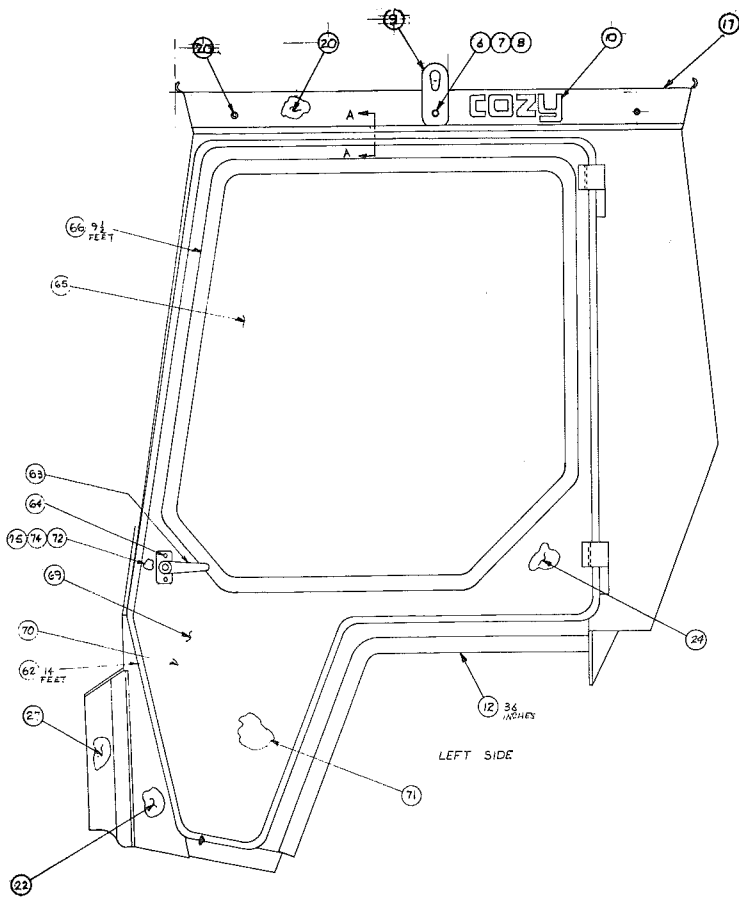
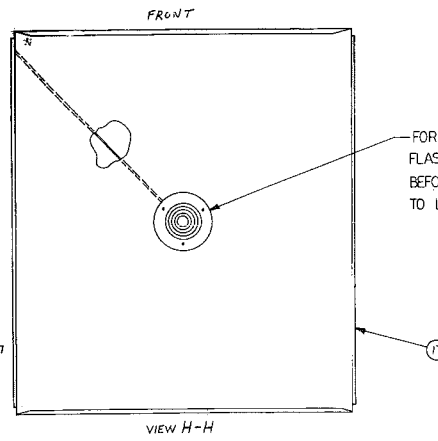
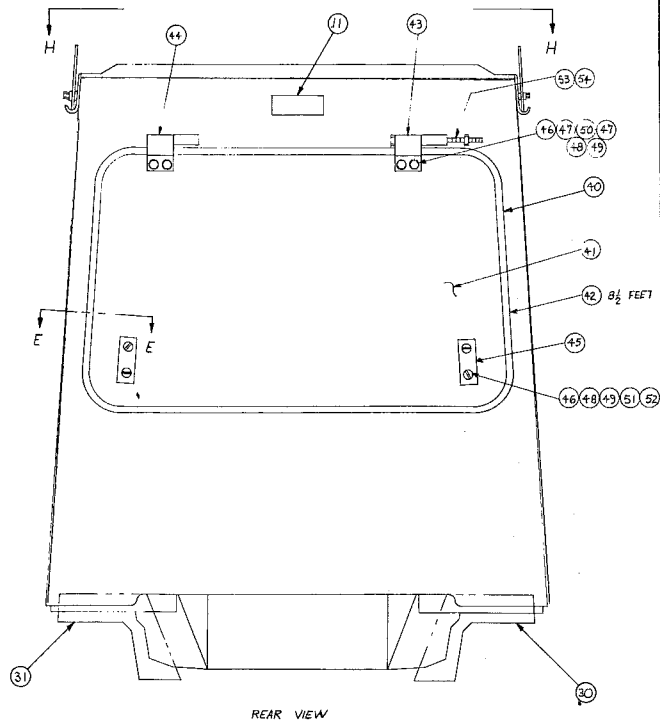
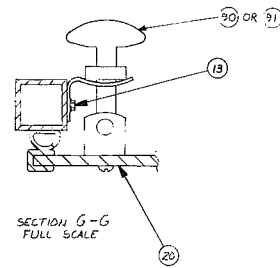
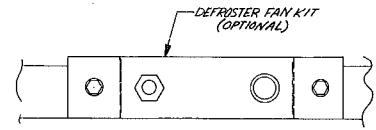
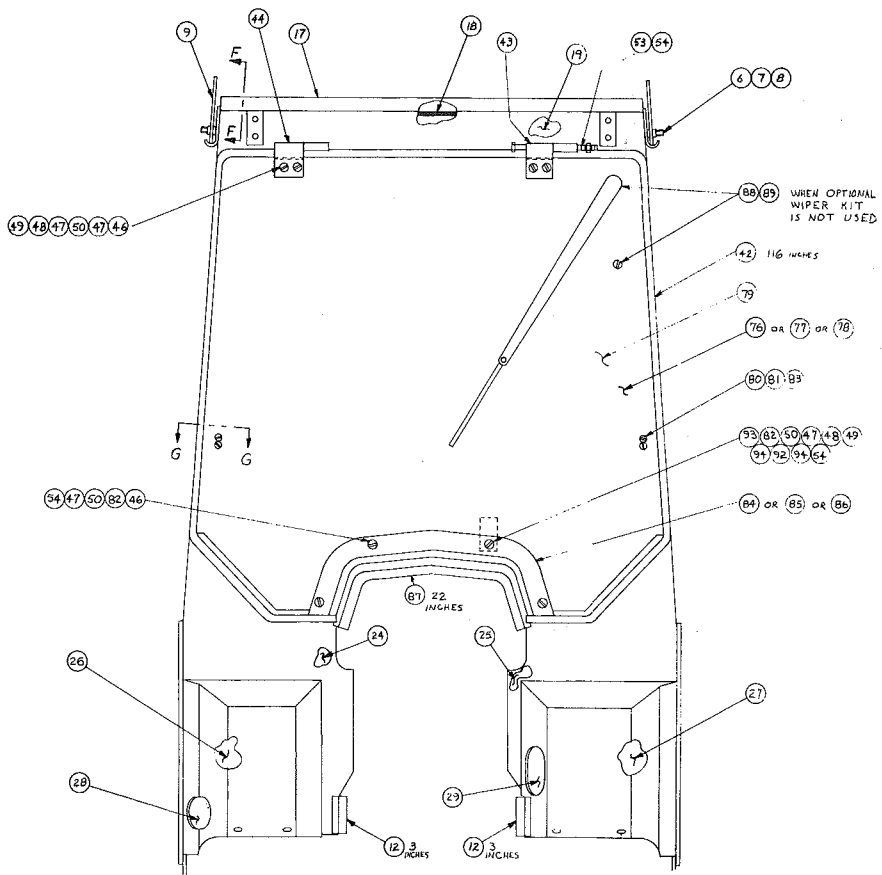


Figure 13

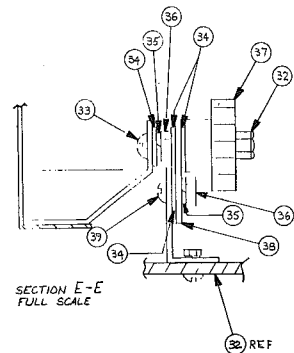
Replacement Parts - JD 655, 755, 855, 955 ROPS Cab



Replacement Parts - JD 655, 755, 855, 955 ROPS Cab



FOR MOUNTING OPTIONAL ROOF MOUNTED FLASHER, LOCATE ON CENTER OF ROOF, BEFORE GLUEING POLYFOAM RUN WIRE TO LEFT FRONT CORNER AS SHOWN.



Replacement Parts
JD 655, 755, 855, 955 ROPS Cab
4-11959

ITEM	QTY	PART NO.	DESCRIPTION
1	1	4-11645	Accessory Mount Panel Assembly
2	1	3-13008	Fuse Block, Small
3	2	3-10448	Screw, Self-tap, #8 x 1/2" Hex Washer Head, Slotted
4	1'3"	3-10647	Rubber, Beadex, Channel, 60 Durometer
5	1	3-10320	Decal, Flasher, Rear Lite, Front Lite, Wiper (Black on Yellow)
6	2	3-10147	Screw, Hex Cap, 3/8-16 x 1"
7	2	3-10073	Nut, Hex, Nylock, 3/8"-16 NC
8	4	3-10086	Washer, Flat, Plain, 3/8"
9	2	1-20618	Lifting Ear
10	2	3-11740	Decal, Cozy for Lawn & Garden
11	1	3-10579	Decal, Cozy Cab Lawn & Garden
12	6'6"	3-10610	Rubber, Clip-on Bubble, Small, 180 Deg.
13	6	3-10448	Screw, Self-tap, #8 x 1/2", Hex Washer Head, Slotted (Zip)
14	1	3-13797	Decal, Caution Ear Protection Is Recommended
15	8'	3-10351	Wire, MTW, 12 Ga. Red
16	1	3-10305	Terminal, 10-12 Ga, #10 Stud, Insulated, Ring Type
17	1	1-28242	Roof Weldment
18	1	1-28292	Insulation, Roof, 1/2"
19	1	1-28277	Insulation, Upper Front Windshield, 1/2"
20	1	1-28288	Insulation, Upper Side, Roof, Right, 1/2"
21	1	1-28289	Insulation, Upper Side, Roof, Left, 1/2"
22	1	1-28293	Insulation, Lower Front Side, Left, 1/2"
23	1	1-28294	Insulation, Lower Front Side, Right, 1/2"
24	1	1-28278	Insulation, Lower Front, Right, 1/2"
25	1	1-28285	Insulation, Lower Front, Left, 1/2"
26	1	1-28287	Insulation, Lower Front, Right, 1/2"
27	1	1-28286	Insulation, Lower Front, Left, 1/2"
28	1	1-28295	Insulation, Lower Front Side, Right, 1/2"
29	1	1-28296	Insulation, Lower Front Side, Left, 1/2"
30	1	1-28281	Insulation, Rear Cab Floor Mount Right, 1/2"
31	1	1-28282	Insulation, Rear Cab Floor Mount Left, 1/2"
32	6	3-10070	Nut, Hex, Nylock, 1/4-20 NC
33	2	3-10212	Screw, Machine, 1/4 NC x 2 1/2" Round Head Slotted
34	8	3-10084	Washer, Flat, Plain, 1/4"
35	4	3-10076	Washer, Lock, Hel Spring, 1/4"
36	4	3-10063	Nut, Hex, 1/4-20 NC
37	2	3-11318	Knob, Black Plastic, Window
38	2	1-10263	Holder, Rear Window, Plated
39	2	3-10381	Screw, Machine, 1/4 NC x 5/8" Round Head, Slotted
40	1	4-11955	Back Window Assembly
41	1	3-14241	Glass, Back
42	18'2"	3-11280	Rubber, Clip-on Bubble, Large, 90 Deg.
43	2	1-20379	Hinge, Weldment, 1/4 Pin, Slots, Bent
44	2	2-11589	Hinge Weldment
45	2	1-10877	Holder, Window
46	15	3-10260	Screw, Machine, 1/4 NC x 3/4" Truss Head, Slotted
47	16	3-10112	Washer, Flat, Fiber, 5/16"
48	16	3-10076	Washer, Lock, Hel Spring, 1/4"
49	13	3-10063	Nut, Hex, 1/4-20 NC
50	16	1-22030	Window Spacer, Plastic
51	4	3-10645	Rubber, Washer
52	7"	1-10643	Channel Liner
53	2	3-13931	Screw, Hex Cap, 1/4-20 x 4 1/2"
54	6	3-10070	Nut, Hex, Nylock, 1/4-20 NC
55	2	4-10055	Scissor Door Holder Assembly
56	6	3-10112	Washer, Flat, Fiber, 5/16"
57	4	3-10085	Washer, Flat, Plain, 5/16"

(Continued)

Replacement Parts

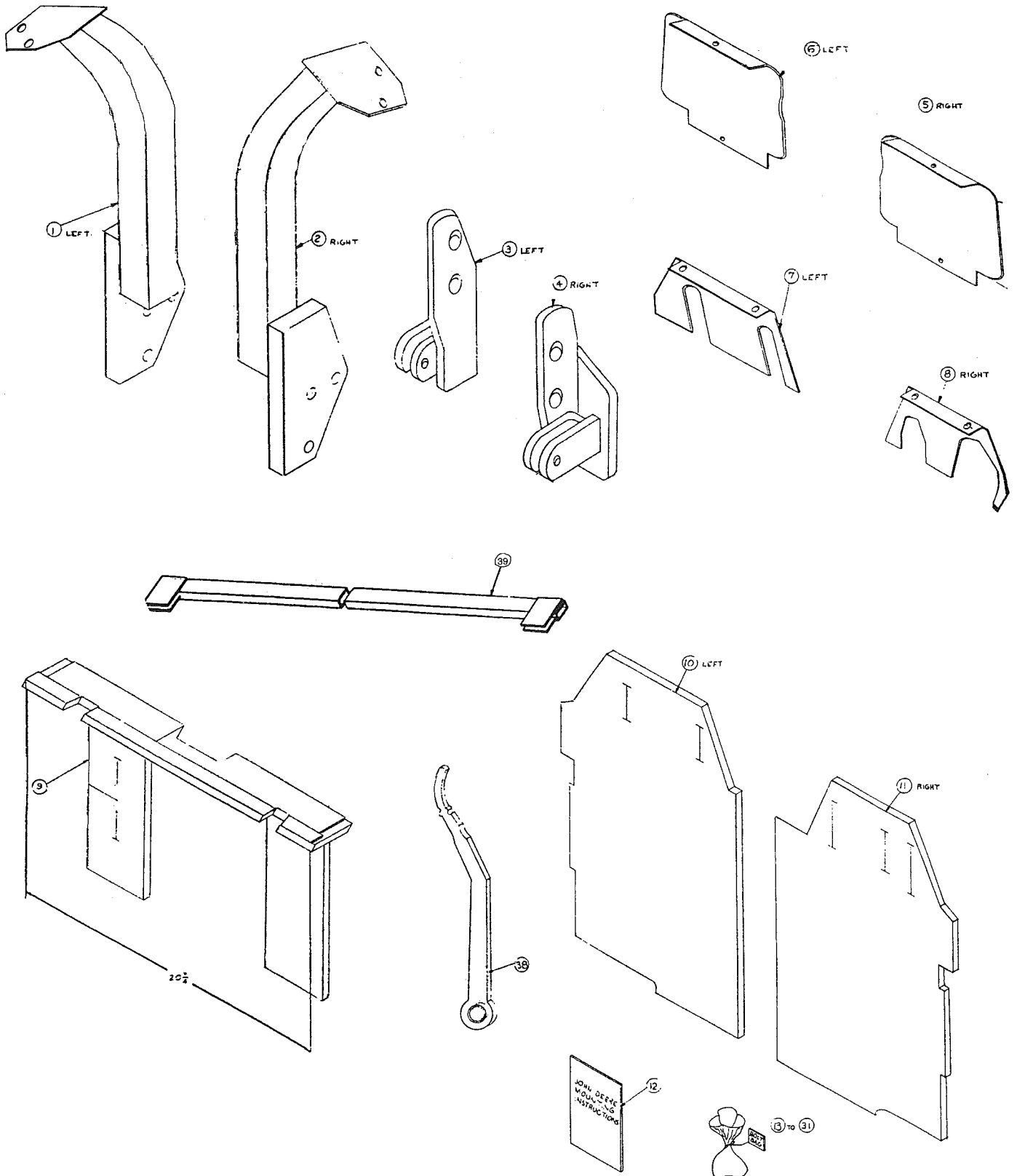
JD 655, 755, 855, 955 ROPS Cab

4-11959

58	2	3-10202	Screw, Hex Cap, 5/16-18 x 4"
59	2	3-10126	Screw, Hex Cap, 5/16-18 x 3/4"
60	1	4-11956	Door Assembly, Right
61	1	2-13127	Door Weldment, Right
62	14'	3-12138	Rubber, Clip-on Bubble, 90 Deg.
63	2	1-23602	Handle, Non-Locking, Mod. 3-12650(1.75 Spacing)
64	4	3-11797	Screw, Self-tap, #10 x 1" Oval Head, Phillips Type A
65	2	3-14246	Glass, Door
66	9'5"	3-10649	Rubber, Window, 1/8" Off-set Locking, 70 Durometer
67	1	3-12158	Decal, ROPS Tested
68	1	1-28280	Insulation, Door Panel, Right
69	1	4-11957	Door Assembly, Left
70	1	2-13126	Door Weldment, Left
71	1	1-28279	Insulation, Door Panel, Left, 1/2"
72	1	3-11127	Door Latch, Right
73	1	3-11128	Door Latch, Left
74	12	3-12057	Screw, Self-tap, 1/4 x 1/2"
75	2	1-10247	Striker, Door
76	1	4-11952	Windshield Assembly, JD 655 Only
77	1	4-11953	Windshield Assembly, JD 755 Only
78	1	4-11954	Windshield Assembly, JD 855, 955 Only
79	1	3-14242	Glass, Windshield
80	4	3-11663	Screw, Machine, #8-32 NC x 1/2" Truss Head, Slotted
81	4	3-14155	Nut, Hex, #8-32 NC
82	1'11"	3-11264	Polyfoam, Sponge, 1/8 x 5/8", PSA
83	1"	3-12626	Hose, Washer, 1/8 ID, 1/4 OD
84	1	2-13135	Hood Filler Weldment, JD 655 Only
85	1	2-13136	Hood Filler Weldment, JD 755 Only
86	1	2-13137	Hood Filler Weldment, JD 855, 955 Only
87	1'11"	3-10610	Rubber, Clip-on Bubble, Small, 180 Deg, #SD-168
88	1	3-10721	Plug, Hole, Plastic 3/8" Dia.
89	1	3-10723	Plug, Hole, Plastic 5/8" Dia.
90	1	4-11641	Rubber Hood Fastener Assembly, Right
91	1	4-11642	Rubber Hood Fastener Assembly, Left
92	1	1-28275	Window Holder Bracket
93	1	3-10107	Screw, Machine, 1/4 NC x 1 1/4" Truss Head, Slotted, Unplated
94	2	3-10084	Washer, Flat, Plain, 1/4"
95	8'8"	3-10345	Wire, MTW, 14 Ga, Black
96	4	3-11428	Terminal, 14-16 Ga, 1/4" Wide, Insulated, Male, Sliding Type
97	2	3-10670	Terminal, 14-16 Ga, 1/4" Solderless, Insulated, Female, Sliding Type

3-16342 Hinge, Cab Half Windshield &
Rear window

Replacement Parts Mounting Kit, JD 755, 855, 955 4-11961



Replacement Parts
Mounting Kit, JD 755, 855, 955
4-11961

ITEM	QTY	PART NO.	DESCRIPTION
1	1	2-13133	Rear Mount Weldment, Left
2	1	2-13134	Rear Mount Weldment, Right
3	1	2-13131	Support Weldment, Left
4	1	2-13132	Support Weldment, Right
5	1	1-28245	Headlight Cover Plate, Right
6	1	1-28244	Headlight Cover Plate, Left
7	1	1-28247	Pedal Filler, Left
8	1	1-28246	Pedal Filler, Right
9	1	4-11965	Dustshield Assembly, JD 855, 955
9	1	1-28291	Dustshield Insulation, JD 855, 955
10	1	1-28262	Floormat, Left
11	1	1-28263	Floormat, Right
12	1	05-10162	Mounting Instructions, JD 655, 755, 855, 955
13	6	3-10080	Washer, Lock, Hel Spring, 5/8"
14	10	3-10087	Washer, Flat, Plain, 1/2"
15	4	3-12647	Screw, Machine, #10-24 NC x 1/2" Truss Head, Slotted, SST
16	4	3-10088	Washer, Lock, Hel Spring, 3/16"
17	4	3-10110	Nut, Hex, #10-24 NC
18	6	3-10394	Screw, Hex Cap, 3/8-16 x 1 1/4"
19	6	3-10078	Washer, Lock, Hel Spring, 3/8"
20	6	3-10065	Nut, Hex, 3/8-16 NC
21	12	3-10086	Washer, Flat, Plain, 3/8"
22	4	3-10406	Screw, Hex Cap, 1/2-13 x 1 1/4"
23	4	3-10079	Washer, Flat, Plain, 3/8"
24	4	3-10067	Nut, Hex, 1/2-13 NC
25	7	3-10260	Screw, Machine, 1/4 NC x 3/4", Truss Head, Slotted
26	7	3-10084	Washer, Flat, Plain, 1/4"
27	7	3-10076	Washer, Lock, Hel Spring, 1/4"
28	7	3-10063	Nut, Hex, 1/4-20 NC
29	4	3-14251	Screw, M16 x 140 x 2.00 C Din 931, Hex Cap, Grade 10.9
30	2	3-14250	Screw, M16 x 130 x 2.00 C Din 931, Hex Cap, Grade 10.9
31	2	3-14249	Screw, M16 x 40 x 2.00 C Din 931, Hex Cap, Grade 10.9
38	1	2-13140	Lever Weldment
39	1	2-13494	Loader Latch Arm Support Weldment (755 only)
85	1	2-13136	Hood Filler Weldment 755 (not shown) Shown installed on Cab Assembly
86	1	2-13137	Hood Filler Weldment 855, 955 (not shown) Shown installed on Cab Assembly

ROPS CAB SUPPLEMENTAL MOUNTING INSTRUCTIONS FOR MODEL 70 LOADER ON JOHN DEERE 755

1. Preparation of Loader

- A. The loader mount on the right side of tractor will have to be modified slightly in order to clear cab. Figure #1-A.

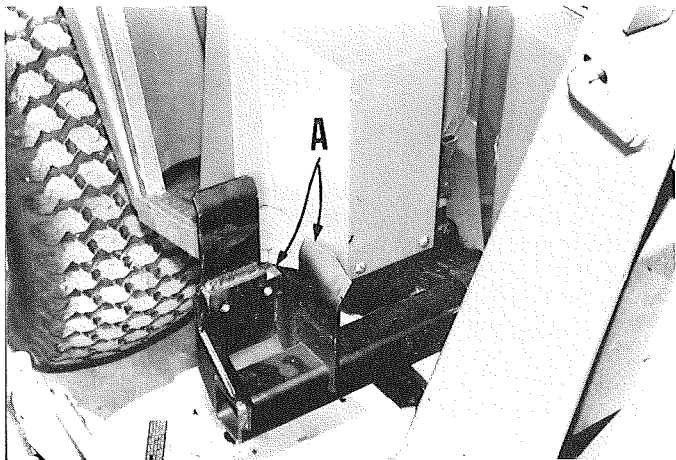


Figure 1

- B. Figure #2 shows left side where no modifications are necessary.



Figure 2

- C. The top edge of the loader latch mounts will have to be cut so that the loader can be installed and removed with cab on Figure #3-A.

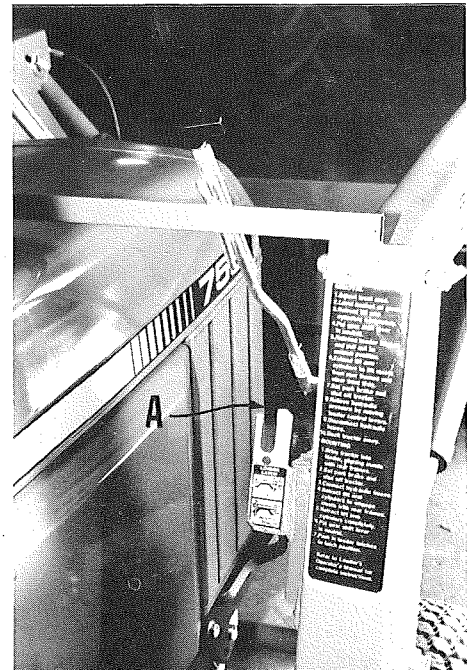


Figure 3

- D. Figure #4 shows the use of the loader support bracket supplied with cab mounting kit when removing loader from tractor. **NOTE:** Cab Windshield assembly will have to be off of cab when removing loader.

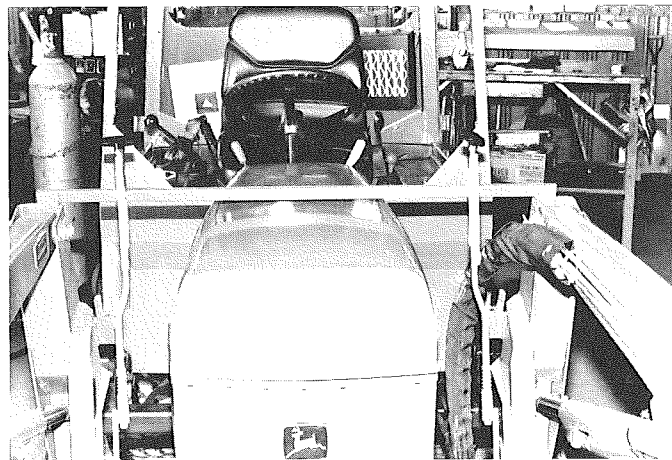
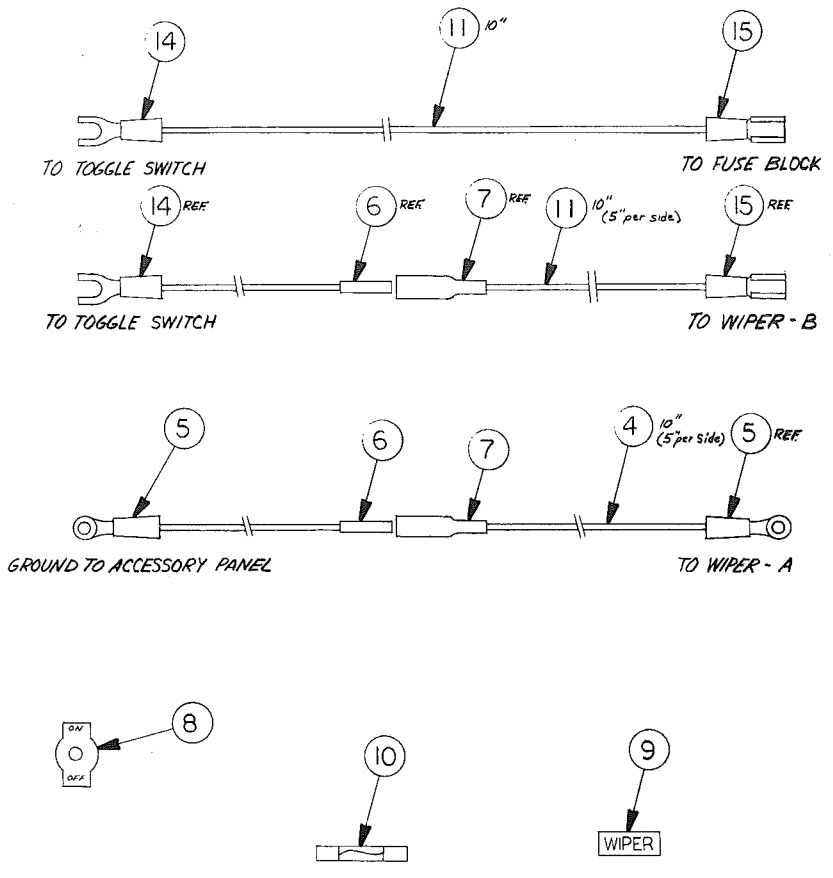
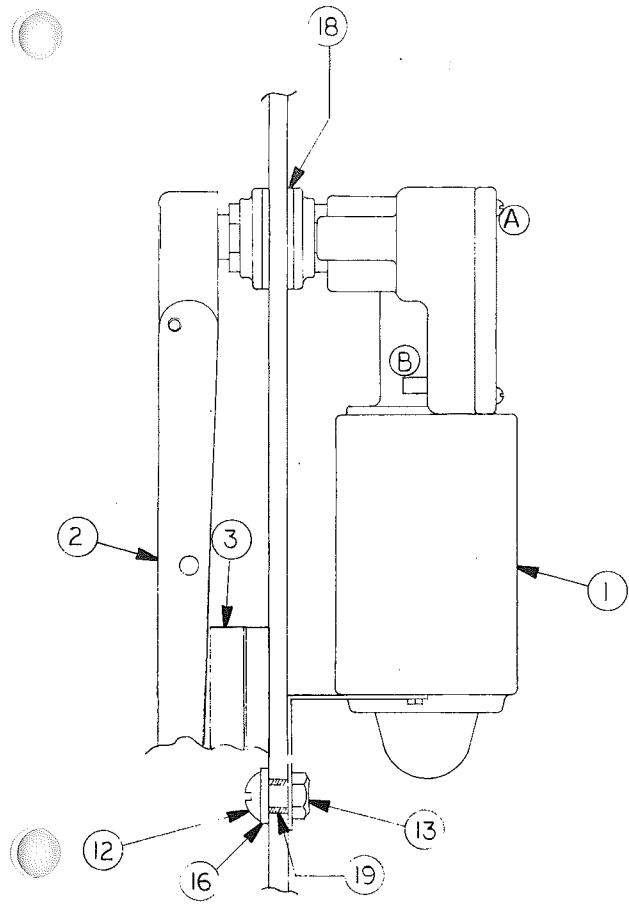


Figure 1

- E. When reinstalling the loader the latch mounts are used per instructions on loader towers.



Replacement Parts JD 655, 755, 855, 955 Wiper Kit 4-11302

ITEM	QTY	PART NO.	DESCRIPTION
1	1	3-11099	Wiper Motor
2	1	3-11091	Wiper Arm
3	1	3-15081	Wiper Blade, 14"
4	11"	3-10345	Wire, MTW, 14 Ga, Black
5	2	3-10667	Terminal, 14-16 Ga, #6 Stud, Insulated, Ring Type
6	2	3-10666	Bullet, Plug, 14-16 Ga, 5/32 OD, Non-insulated
7	2	3-10792	Bullet, Receptacle, 14-18 Ga, 160 ID, Insulated
8	1	3-12096	Switch, Toggle With On-off Plate
9	1	3-10320	Decal, Flasher, Rear Lite, Front Lite, Wiper
10	1	3-11686	Fuse, AGC, 5.00 Amp
11	1'8"	3-10364	Wire, MTW, 14 Ga, Red
12	1	3-10260	Screw, Machine, 1/4 NC x 3/4" Truss Head, Slotted
13	1	3-10070	Nut, Hex, Nylock, 1/4-20 NC
14	2	3-10671	Terminal, 14-16 Ga, #10 Stud, Insulated, Fork Type
15	2	3-10670	Terminal, 14-16 Ga, 1/4" Solderless, Insulated, Female, Sliding Type
16	1	3-10645	Rubber, Washer, 1/4 ID x 5/8 OD
18	1	3-12945	Gasket, Spacer
19	1	1-22030	Window Spacer, Plastic