

INSTALLATION INSTRUCTIONS
John Deere One Series; 1023E, 1025R and 1026R Models



A-11978 HEATER KIT

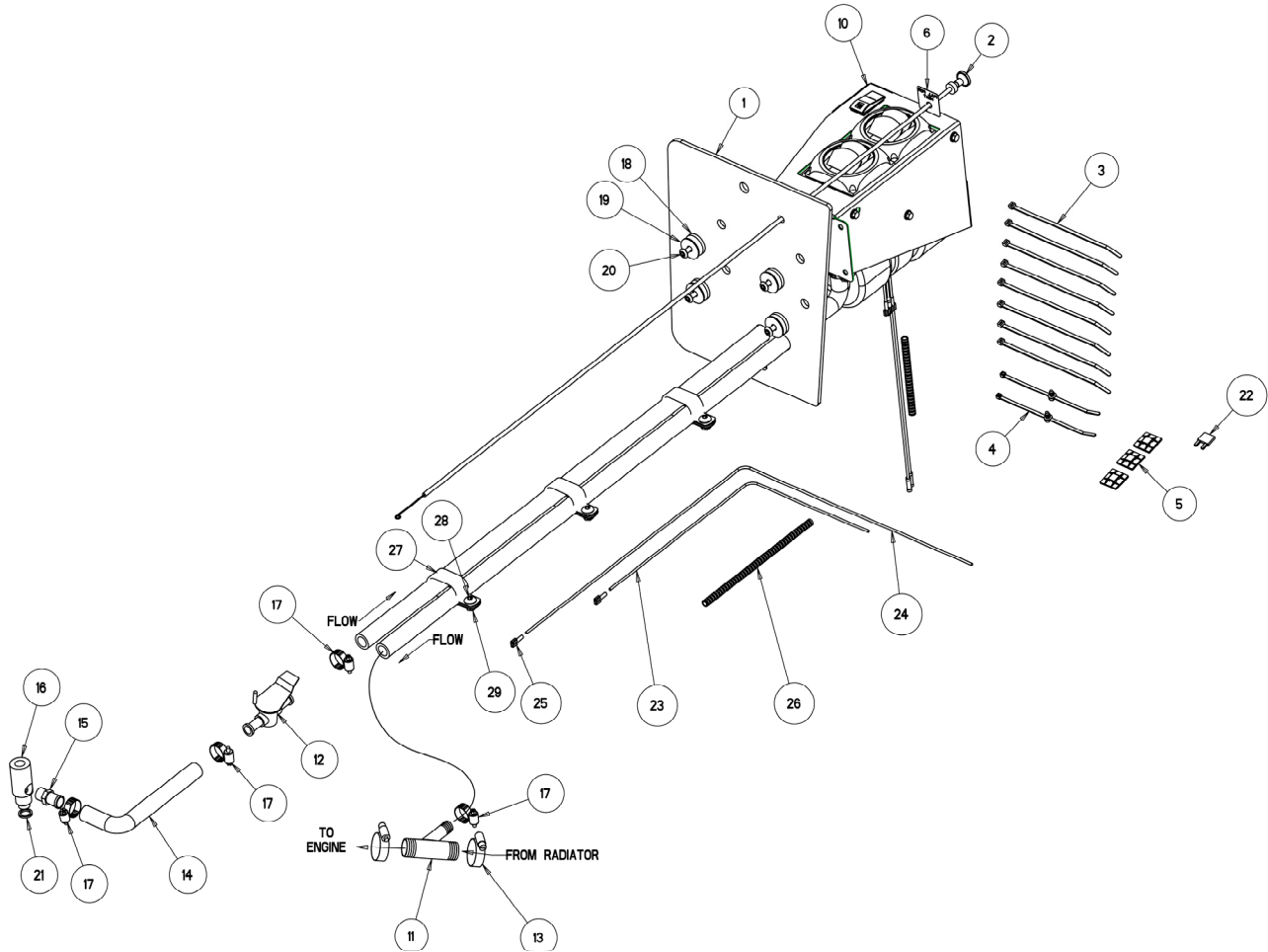


Figure 1
(General Layout and Parts I.D.)

Read these instructions and identify all components. Please retain these instructions for future reference and parts ordering information. Refer to kit components and Figure 1 for general layout.

INSTALLATION INSTRUCTIONS
John Deere One Series; 1023E, 1025R and 1026R Models

Kit Components:	ITEM	QTY	DESCRIPTION	P/N
	1	1	FRONT LOWER WINDOW, ACRYLIC	3-19998
	2	1	CABLE, PUSH-PULL	3-17100
	3	8	WIRE TIE	3-16629
	4	2	CABLE TIE WITH RETAINER	3-19594
	5	3	NYLON TIE MOUNT BLACK PSA	3-17517
	7	1	DECAL PULL FOR HEAT	3-18819
	10	1	HEATER ASSEMBLY	4-15815
	11	1	HEATER Y-FITTING	3-20137
	12	1	CABLE OPERATED VALVE	3-11220
	13	2	HOSE CLAMP #16	3-13442
	14	1	HOSE ELBOW	1-49570
	15	1	FITTING BRASS 375 TO 62	3-12119
	16	1	FITTING HEATER, ALUMINUM	3-17262
	17	4	CLAMP, HOSE, #10	3-10858
	18	4	RUBBER GLASS, WASHER	3-16217
	19	4	FENDER WASHER	3-18187
	20	4	MSCR, .250 X 1.00 TRUSS, TORX HEAD	3-19335
	21	1	O-RING	3-16823
	22	1	FUSE, 10 AMP	3-16057
	23	1	WIRE, RED, 14 GA X 102"	3-10364
	24	1	WIRE, BLACK, 14 GA X 76"	3-10345
	25	2	BLADE CONNECTOR, .250, 14 GA, BLUE	3-10670
	26	1	WIRE DUCT .350" X 72"	3-10704
	27	3	DUAL P-CLAMP FOR 5/8" HOSE	3-11255
	28	3	MACHINE SCREW, 5/16" X 1/2" LONG	3-19338
	29	3	FLANGE NUT, 5/16	3-17111

Note: Cab kit A-11858 must be installed prior to installing this kit!

Preparation of Tractor;

1. Park tractor on level surface and turn ignition key off.
2. Allow engine to cool. Drain coolant from radiator. Open hood and remove engine side panel covers.

Mounting the heater unit;

3. Remove lower RH front window from cab (**Figure 2A**) and remove seals from window.
4. Install seals onto new window (1) supplied with heater kit (**Figure 3**).
5. Re-install window with seals onto lower RH front cab location (**Figure 3**) re-using window hardware.
6. Secure the heater unit (10) onto the inside surface of the new window using (**Figures 2B and 3**);
 - (4) 1/4" x 1" button socket head bolts (20)
 - (4) 5/16" flat fender washers (19)
 - (4) Rubber shoulder washers (18)

INSTALLATION INSTRUCTIONS
John Deere One Series; 1023E, 1025R and 1026R Models

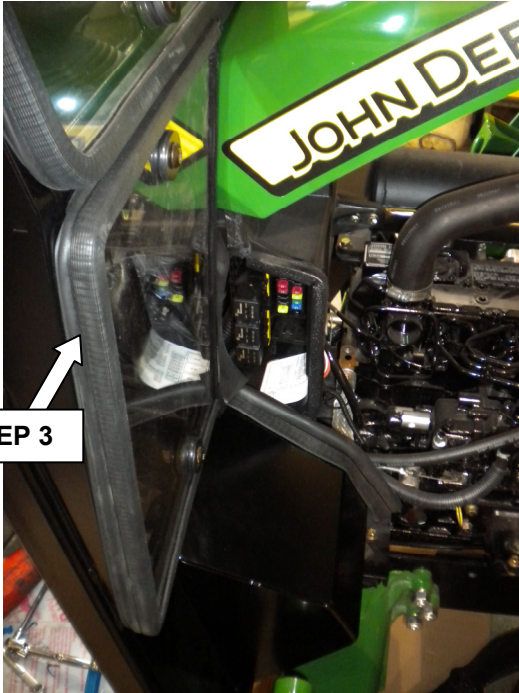


Figure 2A

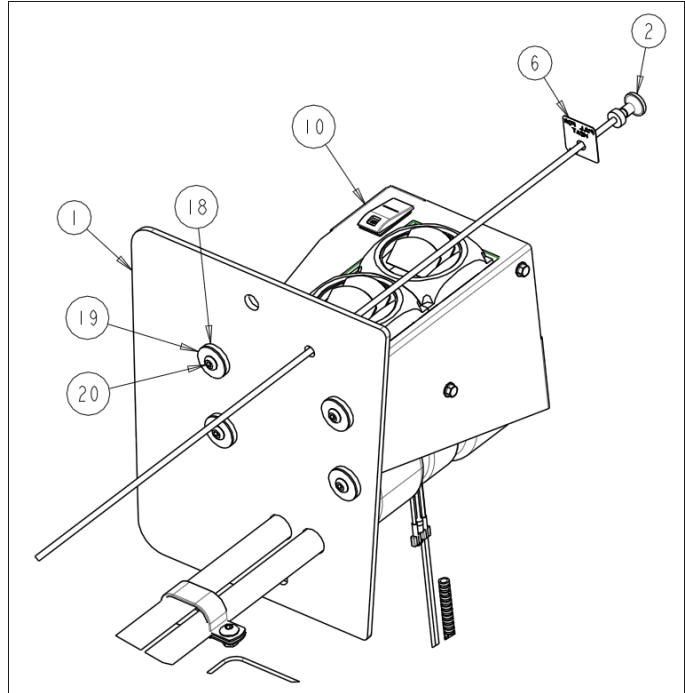


Figure 2B

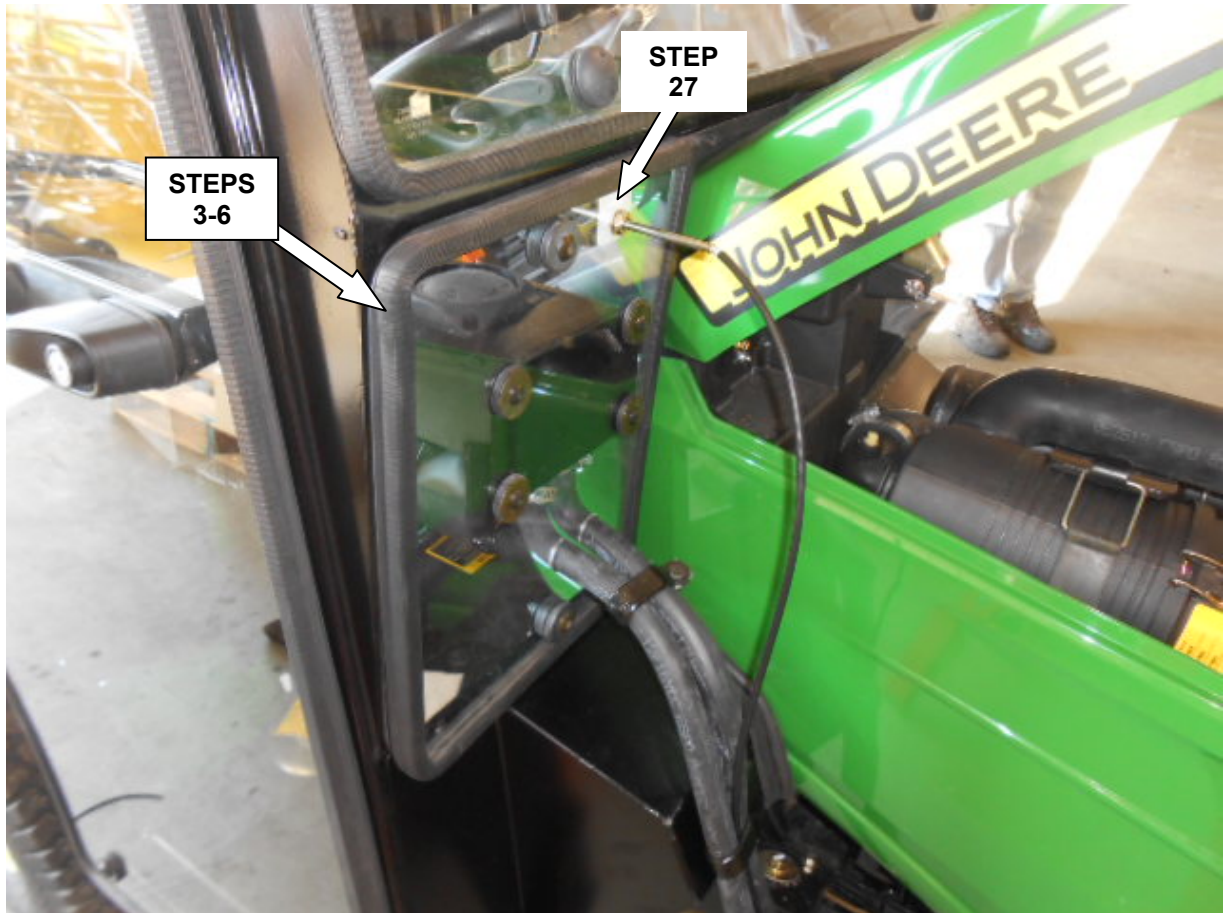


Figure 3

INSTALLATION INSTRUCTIONS

John Deere One Series; 1023E, 1025R and 1026R Models

Supply connection from engine to heater unit (Steps 7-13) (Figures 4A & 4B);

7. Locate temperature sensor near thermostat area. Remove temperature sensor.
8. Install aluminum fitting (16) with rubber washer (21) into port location.
9. Reinstall temperature sensor into aluminum fitting (16).
10. Install brass fitting (15) into aluminum fitting (16) using thread sealing tape.
11. Connect 5/8" x 17.00" long, heater hose elbow (14) to brass fitting (15) and secure using a small hose clamp (17).
12. Connect shut-off valve (12) to remaining end of 5/8" x 17" long heater hose (14) and secure using a small hose clamp (17). Note: The valve **must** be install and oriented as shown in **Figure 4A**.
13. Connect 5/8" x 38.00" long heater hose from heater to remaining end of shut-off valve (13) and secure using a small hose clamp (17).

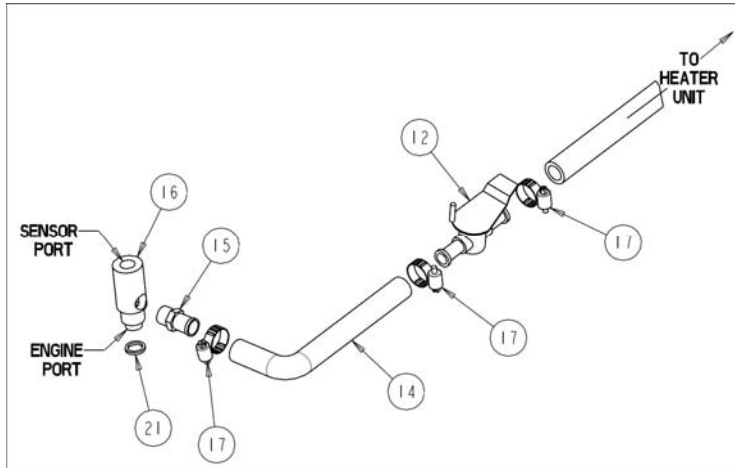


Figure 4A



Figure 4B

Return connection from heater unit to engine (Steps 14-16) (Figure 5A & 5B);

14. Locate lower radiator hose. Cut hose and install the reducing Y-fitting (11) as shown in **Figure 5**.
15. Secure using large hose clamps (13).
16. Connect 5/8" x 38" long, heater hose from heater to 5/8" nipple on Y-fitting (11) and secure using small hose clamp (17).

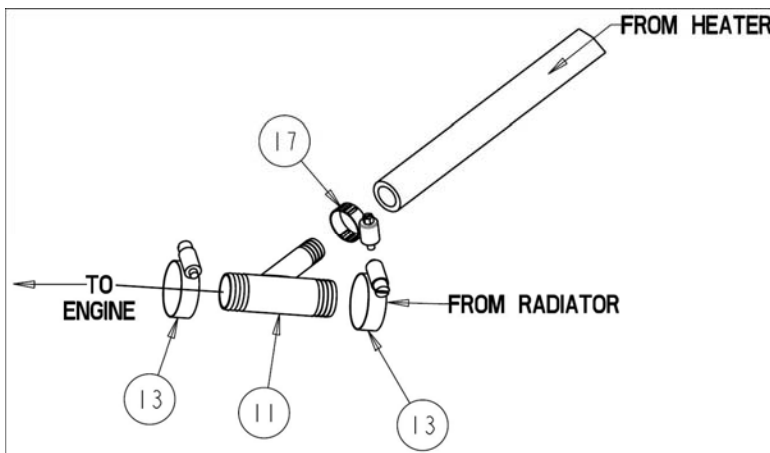


Figure 5A



Figure 5B

INSTALLATION INSTRUCTIONS
John Deere One Series; 1023E, 1025R and 1026R Models

Connecting power to headliner;

17. Connect heater unit red wire to 102" red using a wire crimping tool.
18. Connect heater unit black wire to 72" black wire using a wire crimping tool.
19. Remove (4) headliner bolts and lower headliner.
20. Select an empty fuse block location.
21. Attach a .25" female spade terminal to remaining end of red wire using a wire crimping tool. Route red wire and connect to selected fuse block location.
22. Attach a .25" female spade terminal to the end of black wire using a wire crimping tool. Route black wire to grounding terminal (-12VDC).
23. Install 10 amp fuse (22) into selected location from step 21.
24. Cover wires with split loom conduit.
25. Secure wires with wire ties and wire tie mounts.
26. Reinstall headliner bolts.

Completing Installation;

27. Apply push/pull decal (7) to inside of RH front window (**Figure 3**).
28. Install push/pull cable (2) from inside of RH front window (1). Route loop end of cable to shut-off valve (12) (**Figure 6**). Secure with hardware supplied with push/pull cable.
29. Connect loop end of push/pull cable (2) to shut-off valve (12) and retain cable using hardware supplied with valve (**Figure 6**).
30. Refill radiator.
31. Start tractor and turn heater switch on and off to check blower operation.
32. Pull and push cable several times to activate valve and allow coolant to circulate through the heater.
33. Shut engine off and check coolant. This may take several attempts to purge all the air from the system.

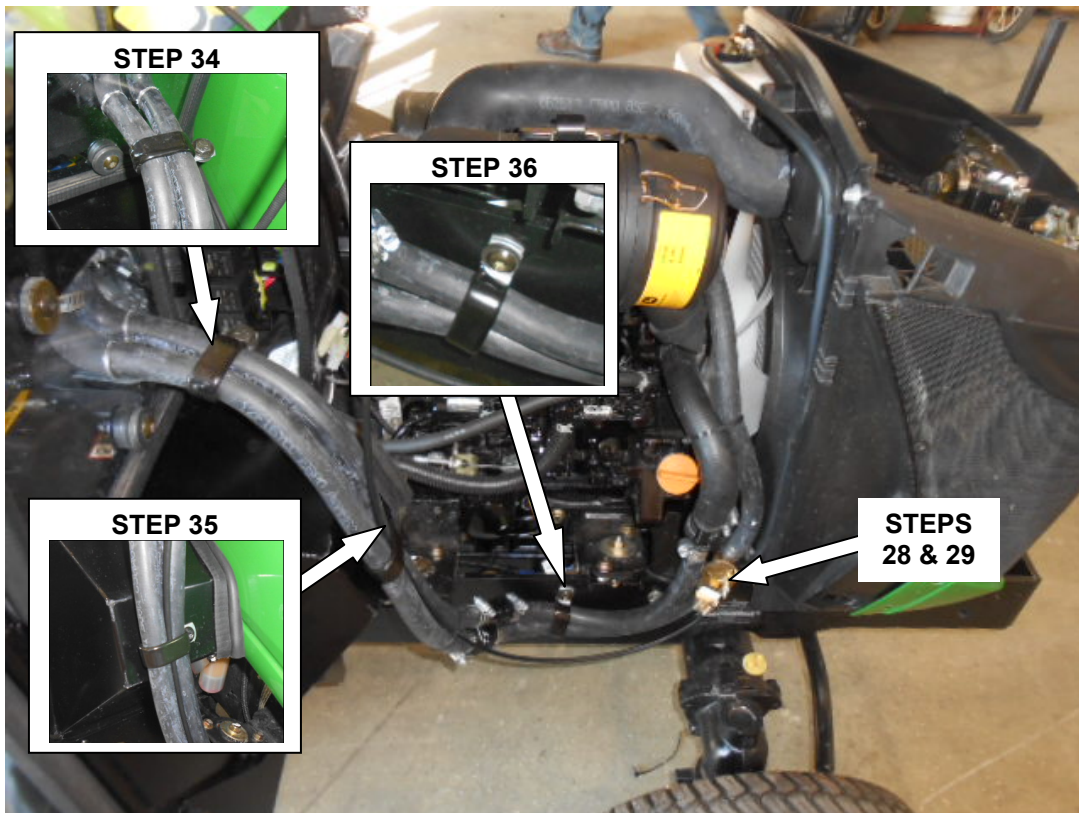


Figure 6

INSTALLATION INSTRUCTIONS
John Deere One Series; 1023E, 1025R and 1026R Models

34. Measure 4 inches from front window and secure heater hoses together using **(Figure 6)**;
 - (1) Double P-clamp (27)
 - (1) 1/4" x 1.00" long bolt (28)
 - (1) 1/4" hex flange nut (29)
35. Secure heater hoses and push/pull cable to front of RH pedal pocket. A 1/4" hole will need to be drilled into the pedal pocket panel as shown in **(Figure 6)**, if hole is not present. Secure using;
 - (1) Double P-clamp (27)
 - (1) 1/4" x 1.00" long bolt (28)
 - (1) 1/4" hex flange nut (29)
36. Secure heater hoses to frame location as shown in **(Figure 6)**. Use existing hole already in the frame. Secure to frame using;
 - (1) Double P-clamp (27)
 - (1) 1/4" x 1.00" long bolt (28)
 - (1) 1/4" hex flange nut (29)

Finishing Installation;

37. Secure loose wires and hoses using nylon ties supplied with kit. **Do not secure wires or hoses to high pressure fuel lines, hot surfaces or moving components.**

Revised 09-27-13; 1025R addition

Installation is now complete. If you have any questions or comments, contact;



PO BOX 70, 1715 S. Sibley Avenue, Litchfield, MN 55355-0070
Ph: (320) 693-3221 Fax: (320) 693-7252
www.800cabline.com

05-11313
9/27/2013