



A-12004 RECIRCULATION FAN KIT

Note: This kit requires a minimum current draw of 3.3 amps at 12 VDC. Do not exceed the machine's available alternator capacity. If you do not know how much current is available, contact your dealer or manufacturer of this machine, prior to installing this kit.

This kit is for use in cabs that have a factory installed overhead switch panel. The cab and overhead switch console are supplied with a main feed breaker/relay wire harness and 6-slot fuse block with ground terminals.

Before you begin, read these instructions and identify all components (Figure 1). Please retain these instructions for future reference and parts ordering information.

Kit Components:	ITEM	QTY	DESCRIPTION	PART NO.
	1	1	FAN MOUNT PANEL	1-48816
	2	1	FAN ASSEMBLY WITH SWITCH	3-15346
	3	5	BOLT, No.10 x 1/2" LONG	3-17331
	4	5	NUT, NYLOCK No.10	3-10308
	5	1	FAN GASKET (SUPPLIED WITH FAN)	-
	6	1	WIRE HARNESS, FAN	3-20162
	7	3	NYLON TIE	3-16629
	8	1	TERMINAL BLADE	3-19901
	9	1	TERMINAL BULLET	3-11795
	13	2	ROSEBUD LOOM RETAINER, 1/4"	3-20008

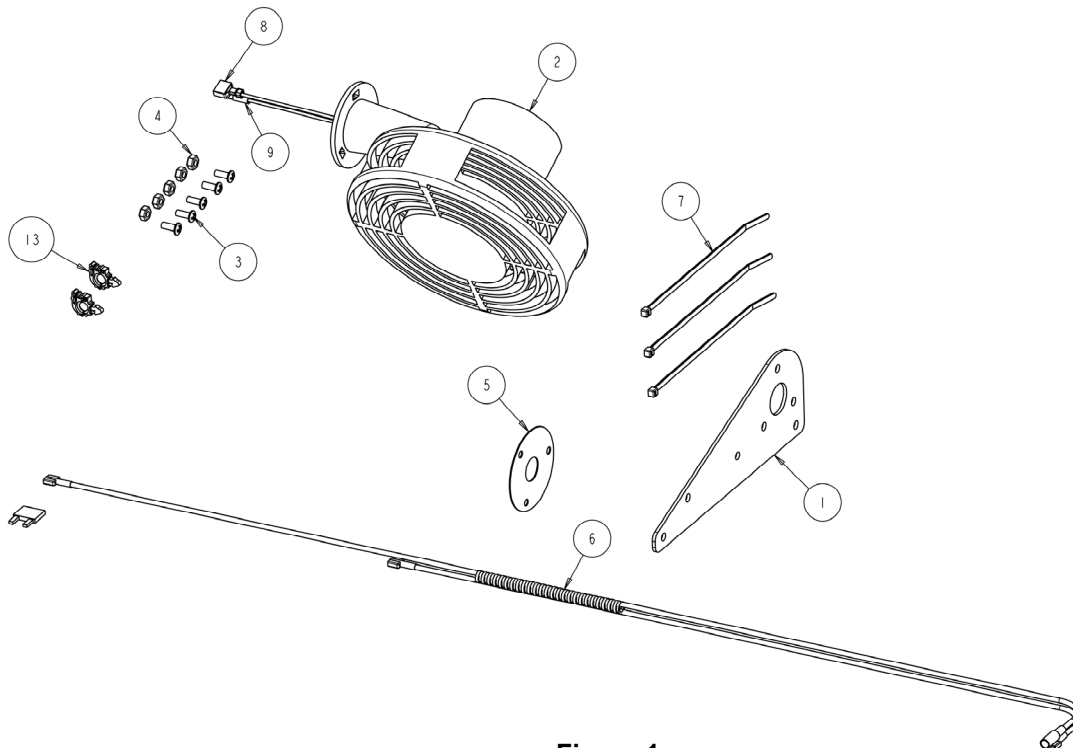


Figure 1

FAN KIT INSTALLATION:

1. Make sure machine's ignition key is turned off. Remove key.
2. Secure fan (Item 2) with fan gasket (Item 5) to mount panel (Item 1) using No. 10 x 1/2" long bolts (Item 3) and No.10 nylock nuts (Item 4) (**Figure 2**).
3. Connect fan end of wire harness 3-20162 (Item 6) to wires of fan (Item 2).
4. Secure fan with mount panel to Rear RH side of Cab as shown in Figure 2 using No. 10 x 1/2" long bolts (Item 3) and No.10 nylock nuts (Item 4) (**Figure 2**).
5. Remove overhead switch panel bolts and allow panel to tip down.
6. Route opposite end of wire harness along the inside of RH header to fuse block location (**Figure 3a**). Remove fuse block access cover from switch panel.
7. Secure wire harness using (2) 1/4" rosebud retainers (Item 13) to inside of RH header channel (**Figure 3a and 3b**).
8. Connect red wire of wire harness to an empty fuse block terminal (**Figure 4**).
9. Connect black wire of wire harness to fuse block (-12VDC) grounding terminal (**Figure 4**).
10. Install 5 amp fuse into fuse block location selected in Step 8 (**Figure 4**).
11. Turn tractor's ignition key "On" and check fan operation by turning the switch located on the fan, on and off. Fan should also turn off when tractor's ignition key is turned off.
12. Secure wire harness using nylon ties (Item 7).
13. Re-install switch panel to cab. Secure fuse access cover panel to switch panel.

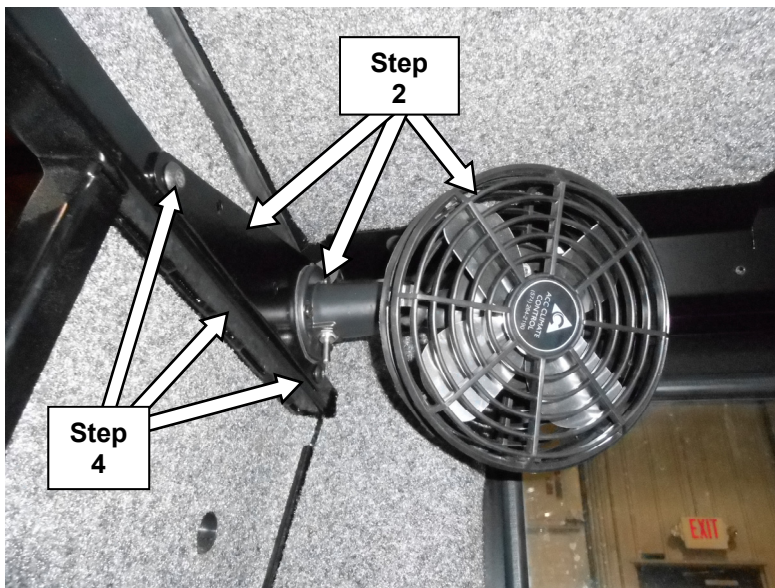


Figure 2

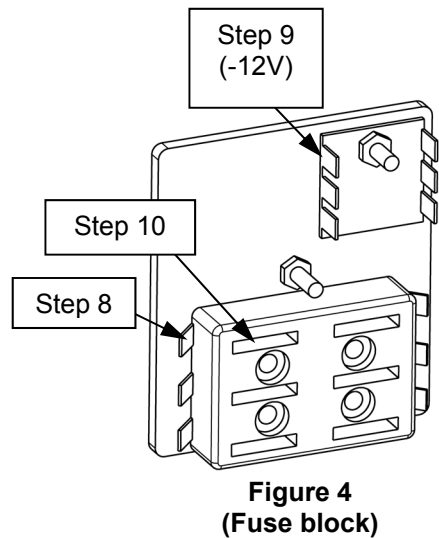


Figure 4
(Fuse block)

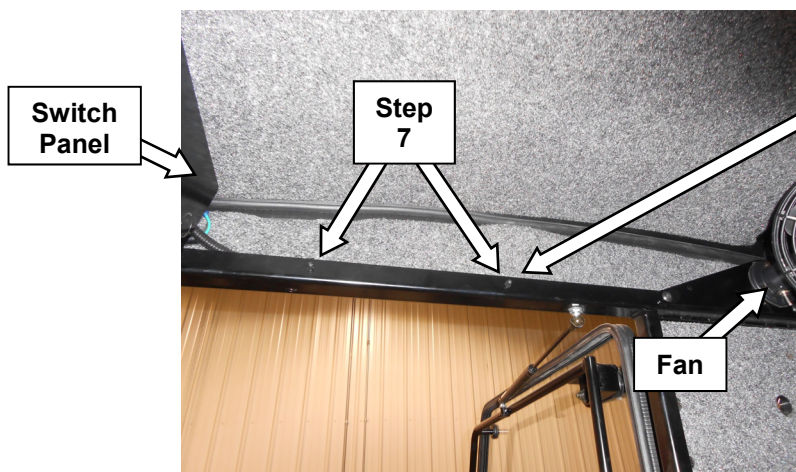


Figure 3a

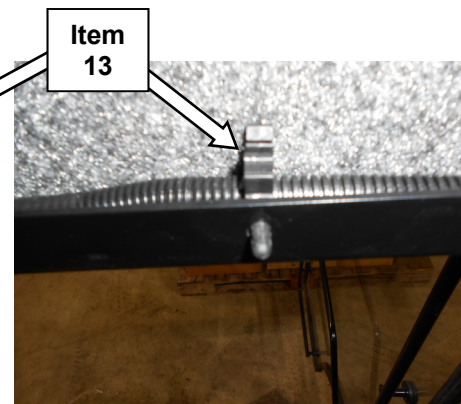


Figure 3b