

John Deere HPX and XUV  
Heater Kit 4-14916

**COZYcab™**



## MOUNTING INSTRUCTIONS

With replacement parts drawing

**SP** **CUSTOM PRODUCTS**  
OF LITCHFIELD, INC.

BOX 70 • LITCHFIELD, MINNESOTA 55355-0070  
(320) 693-3221 Fax: (320) 693-7252  
Visit our web site at: [www.800cabline.com](http://www.800cabline.com)

# John Deere HPX Heater Kit 4-14916

**Note: This kit does not include engine hookup fittings! Engine fittings need to be ordered from your local John Deere Dealer.**

**Gas model fittings:           JD part number VGB10547**  
**Diesel model fittings:       JD part number VGB10548**

1. Turn engine off and allow to cool. Drain coolant from the radiator.

## **Mounting the heater unit**

2. Mount the bracket to the heater unit and secure using (3) ¼-20unc X ¾" self-tapping screws
3. Place heater unit against passenger side seat base area. Locate bracket 1" from outer edge of seat panel. Match drill (2) 3/16" diameter holes. Secure using (2) ¼-20unc X ¾" self-tapping screws.
4. Install (2) louvers into the heater unit. See Figure 1.

## **Connecting heater hoses**

5. Remove heater nipple plugs if present.
6. Connect (2) heater hoses, 5/8" X 7" long to each nipple of the heater unit and secure with small hose clamps.
7. Install h-valve and secure with small hose clamps. Locate valve as shown in figure one.
8. Connect (1) heater hose 18" long to the outer nipple of the H-valve to the engine area. Secure with small hose clamps.
9. Connect (1) heater hose 36" long to the inside nipple of the H-valve to the engine area. Secure with small hose clamps.
10. Install the return radiator hose tee. Gas and Diesel models have different hose routes. Select a location of the machine's 1" return hose line for best installation of the hose tee.
11. Install the hose tee and secure using (2) large hose clamps.
12. Connect the 36" long heater hose that routes from the inside nipple of the H-valve to the 5/8" nipple of the hose tee and secure with (1) small hose clamp.
13. Install the 5/8" to ½" hose reducer and the ½ x 48" long heater hose to the 18" long heater hose that routes from the outside nipple of the H-valve and secure using small hose clamps.
14. Route the ½" x 48" long heater hose around the rear to the driver side of the engine area, to the fuel filter area. See Figures 2 and 3.

## **Diesel Models follow steps 15-18 (See Figure 4A)**

15. The fuel filter may need to be loosened in order to access the area of supply port for the ½" heater hose. Loosen fuel filter bracket and rotate filter unit out of the way.
16. Remove the engine block plug and install fittings kit JD VGB10548.
17. Install the ½ x 48" long heater hose and secure with small hose clamp. Trim hose if required.
18. Rotate fuel filter back to original location and secure.

## **Gas Models follow steps 19-23 (See Figure 4B)**

20. Remove the engine temperature sensor.
21. Install fittings kit VGB10547.
22. Re-install the engine temperature sensor into the fittings kit VGB 10547.
23. Connect the ½ x 48" long heater hose and secure with small hose clamp. Trim hose if needed.

# John Deere HPX Heater Kit 4-14916

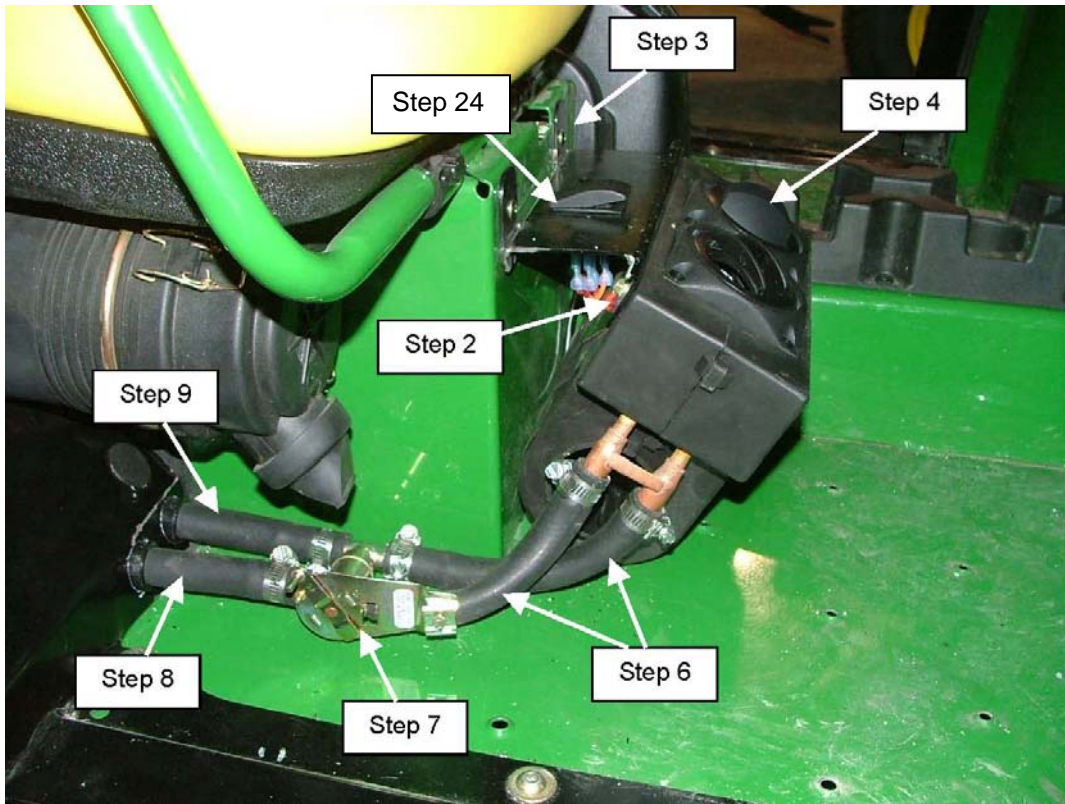


Figure 1

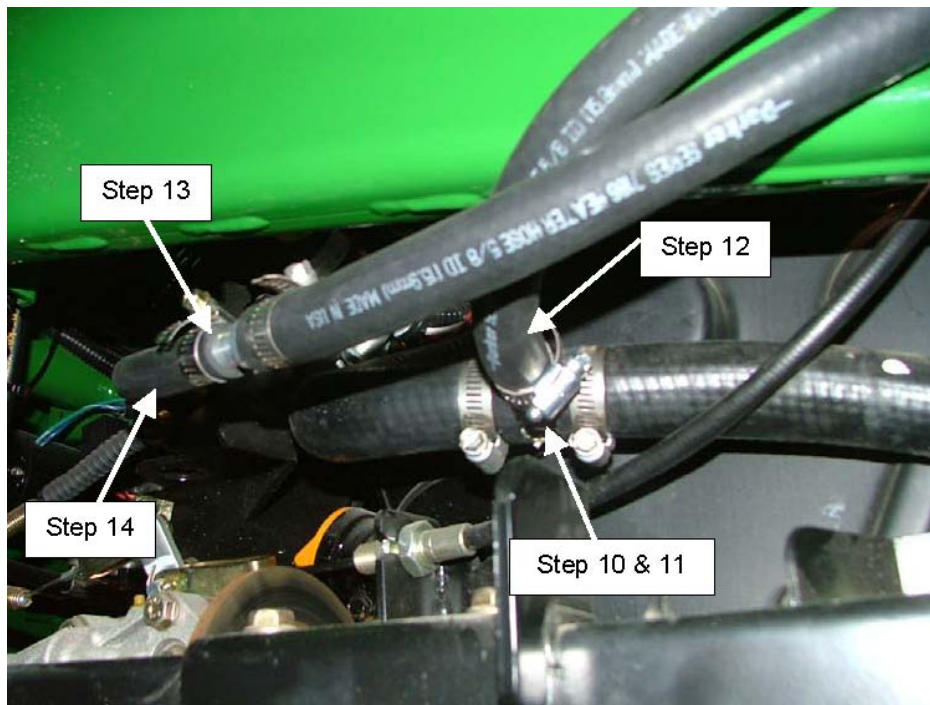


Figure 2



## John Deere HPX Heater Kit 4-14916

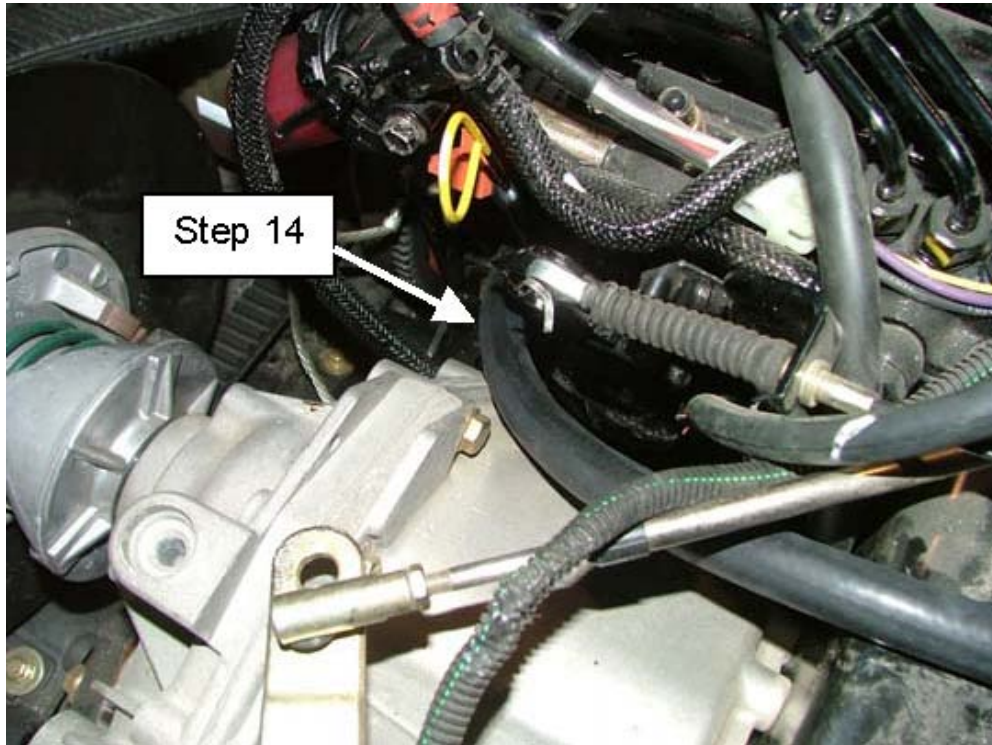


Figure 3

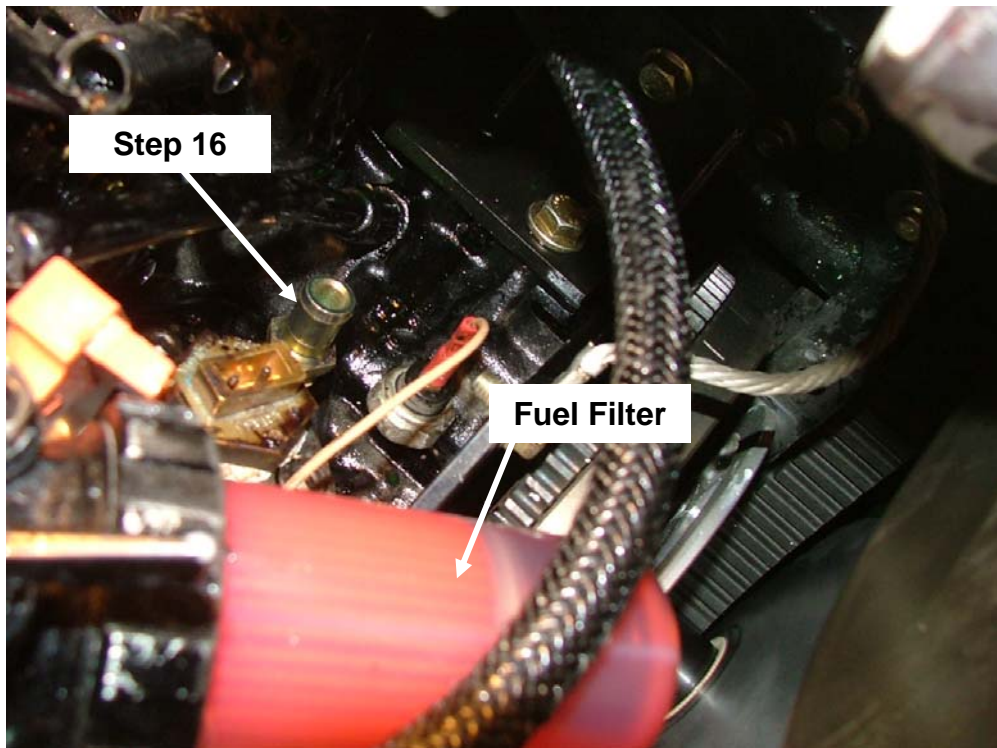
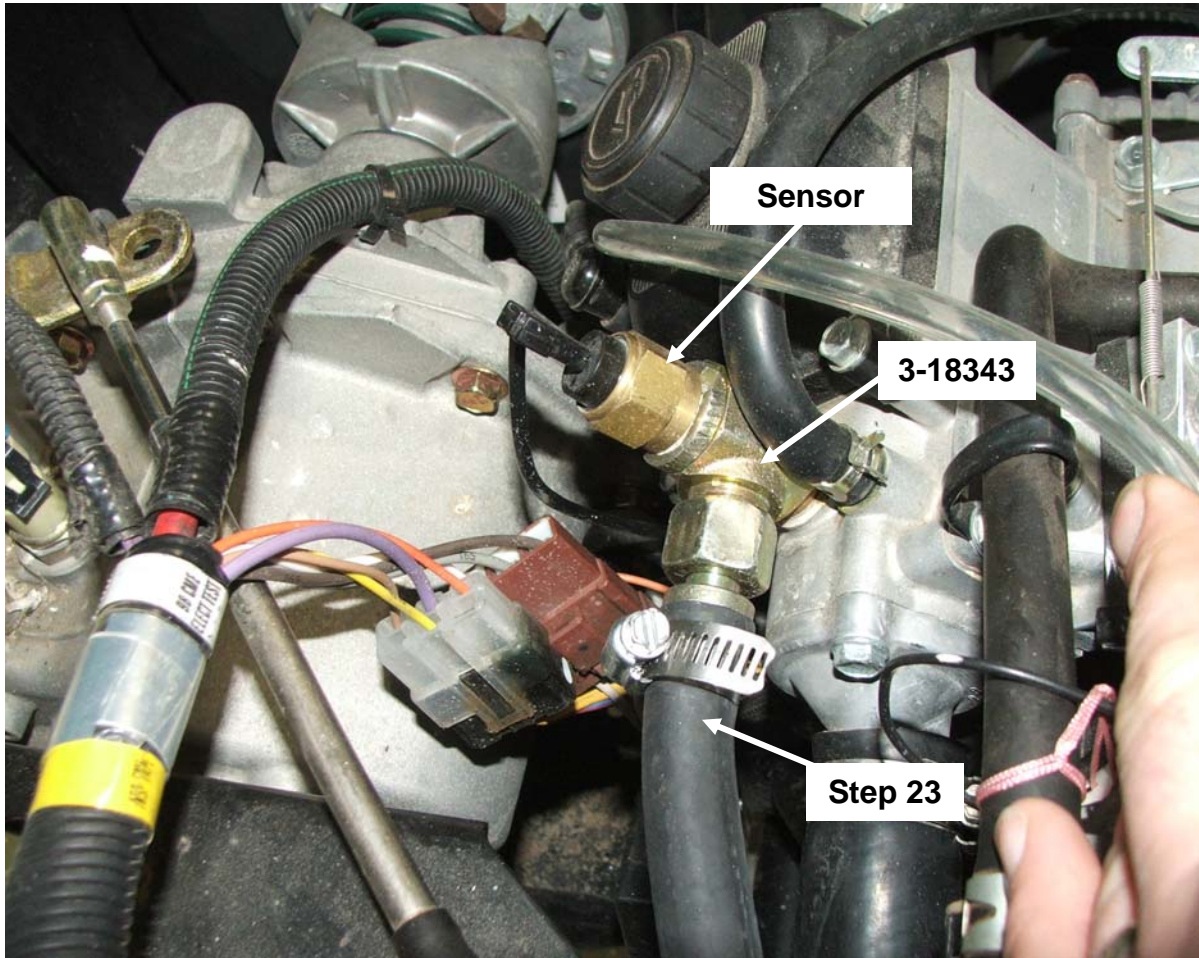


Figure 4A  
(Diesel Models Only)

## John Deere HPX Heater Kit 4-14916



**Figure 4B**  
**(Gas Models Only)**



## John Deere HPX Heater Kit 4-14916

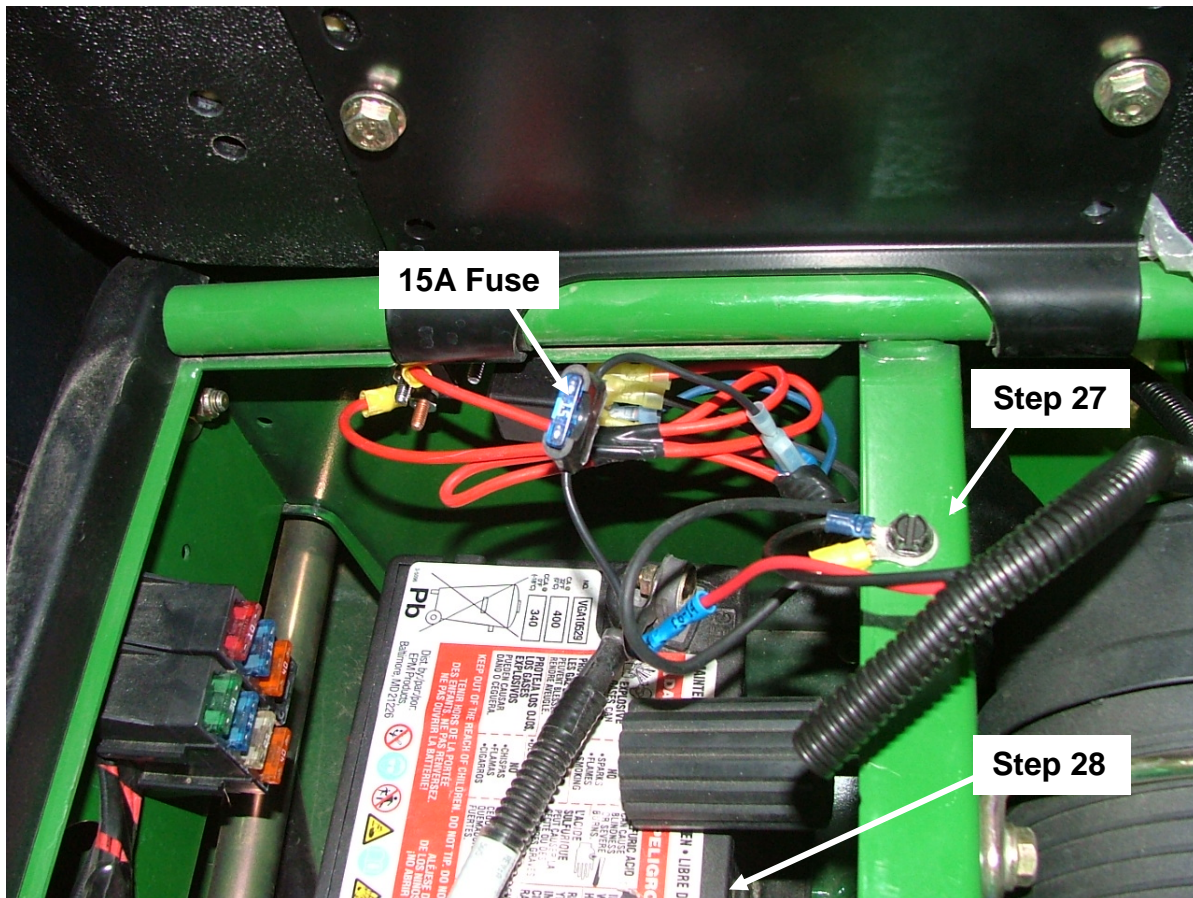


Figure 5

### **Installing the rocker switch and connecting power (Refer to drawing 3-18340)**

24. Install the rocker switch with the wire harness into the rectangular hole of the heater unit mount bracket. See Figure 1.
25. Remove the gray connector that is supplied with the heater unit wires. This connector will not be used.
26. Using an electrical wire crimping tool, connect wire harness wires with blue butt connectors to the heater unit wires. Red to red, orange to orange and black to black.
27. Secure the black wire with terminal eye end to a grounding (-12VDC) location. See Figure 5.
28. Connect the red wire with terminal eye to the positive (+12VDC) terminal of the battery.
29. Check switch operation. Positions are low speed, off and hi speed.

# John Deere HPX Heater Kit 4-14916

## Completing Installation

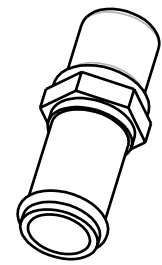
26. Refill radiator and start engine. Allow engine to warm up.
27. Purge the system of air. A pressure tester applied to the radiator may be used to assist in bleeding. Open and close the H-Valve several times during the purging air process. It may take two to three times to bleed air for best results.
28. Secure loose heater hoses or wires with nylon ties supplied with kit.
29. Install the protective hose cover over the H-valve and heater hoses. Secure with nylon tie straps as shown in Figure 6.
30. Installation is now complete.



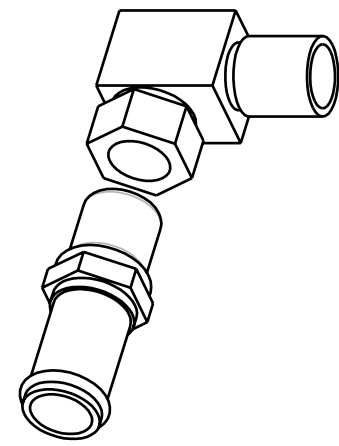
Figure 6



REV.	DCR NO.	DESCRIPTION	DRAFTSMAN	DATE
-	-	DESIGN RELEASE	CAD	12-19-05
A	9241	UPDATED FITTING NOTES AND WIRE HARNESS	CAD	12-06-07

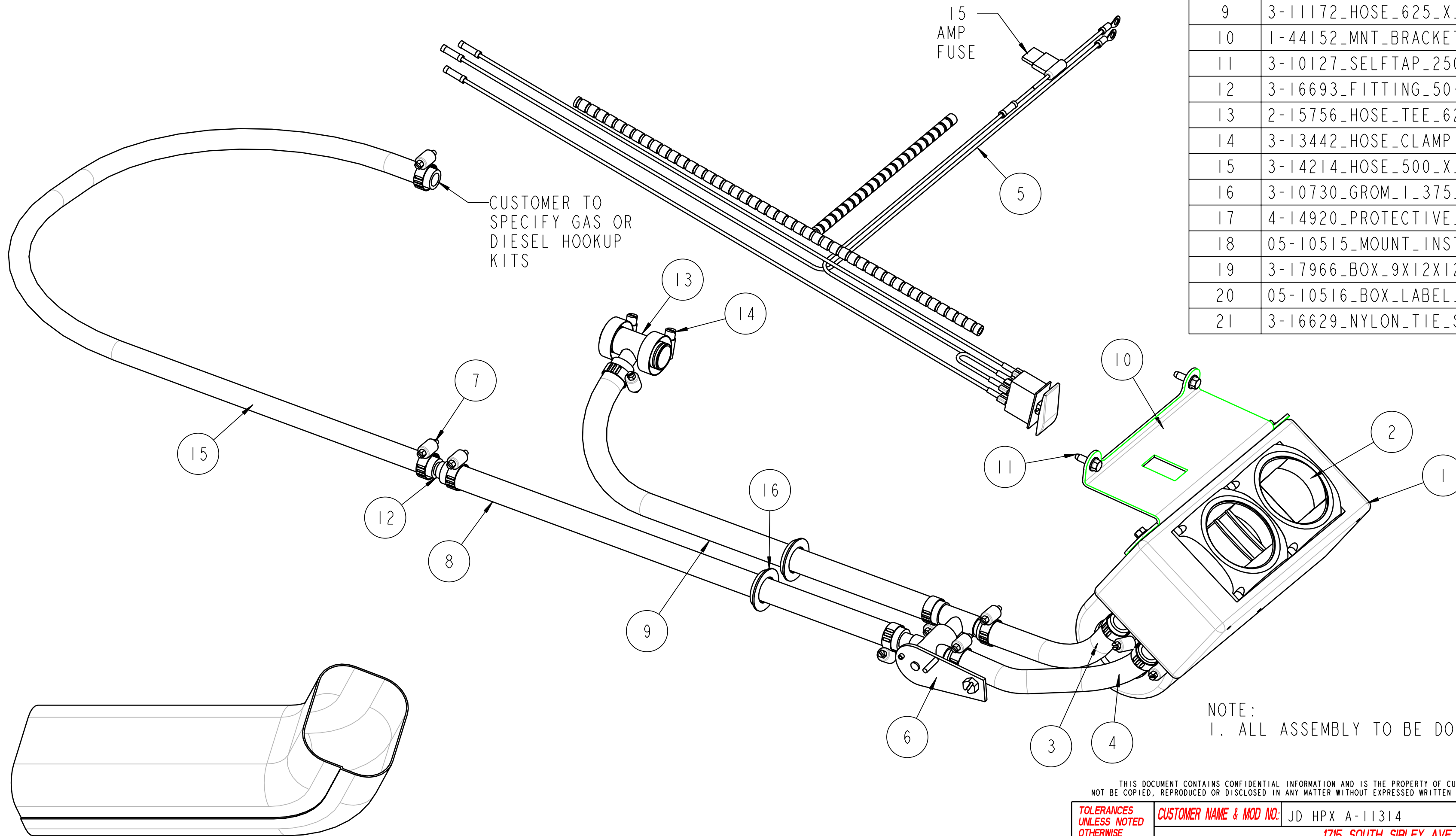


REF JD VGB10548 DIESEL FITTINGS KIT  
SCALE 0.666



REF JD VGB10547 GAS FITTINGS KIT  
SCALE 0.666

ITEM #	DESCRIPTION	QTY
1	3-18067_HEATER_UNIT_R-270-0P_12	1
2	3-18076_LOUVER_FOR_3-18067	2
3	3-11172_HOSE_625_X_7_IN_LG	1
4	3-11172_HOSE_625_X_7_IN_L	1
5	3-18340_WIRE_FUSE_HARN_HPX_HK	1
6	3-16692_VALVE_HTR	1
7	3-10858_CLAMP_HOSE_10	10
8	3-11172_HOSE_625_X_20_IN_LG	1
9	3-11172_HOSE_625_X_18_IN_LG	1
10	1-44152_MNT_BRACKET_HK	1
11	3-10127_SELFTAP_250X750_HWH	5
12	3-16693_FITTING_50-63	1
13	2-15756_HOSE_TEE_625_TO_1X1	1
14	3-13442_HOSE_CLAMP	2
15	3-14214_HOSE_500_X_48_IN_LG	1
16	3-10730_GROM_I_375_MTG	2
17	4-14920_PROTECTIVE_HOSE_SLEEVE	1
18	05-10515_MOUNT_INSTR_4-14916	SEE BOM
19	3-17966_BOX_9X12X12	SEE BOM
20	05-10516_BOX_LABEL_HK_4-14916	SEE BOM
21	3-16629_NYLON_TIE_STRAP_7_50	SEE BOM



CUSTOMER TO SPECIFY GAS OR DIESEL HOOKUP KITS

15 AMP FUSE

NOTE:  
1. ALL ASSEMBLY TO BE DONE BY CUSTOMER

4-14920 QTY=1  
PROTECTIVE HOSE COVER

SCALE 0.333

THIS DOCUMENT CONTAINS CONFIDENTIAL INFORMATION AND IS THE PROPERTY OF CUSTOM PRODUCTS OF LITCHFIELD, INC. AND MAY NOT BE COPIED, REPRODUCED OR DISCLOSED IN ANY MANNER WITHOUT EXPRESSED WRITTEN CONSENT FROM CUSTOM PRODUCTS OF LITCHFIELD, INC.

TOLERANCES UNLESS NOTED OTHERWISE .X ± .09 .XX ± .06 .XXX ± .03 HOLE SIZE .05/-010 ANGLE ± 5°	CUSTOMER NAME & MOD NO.: JD HPX A-11314	MATL SPEC: SEE BOM
	CUSTOM PRODUCTS 1715 SOUTH SIBLEY AVE. LITCHFIELD, MN 55355	
TITLE HEATER KIT 15K BTU	DRWG SIZE C	DRWG NO. 4-14916
	REV LEVEL A	DATE 1-21-05

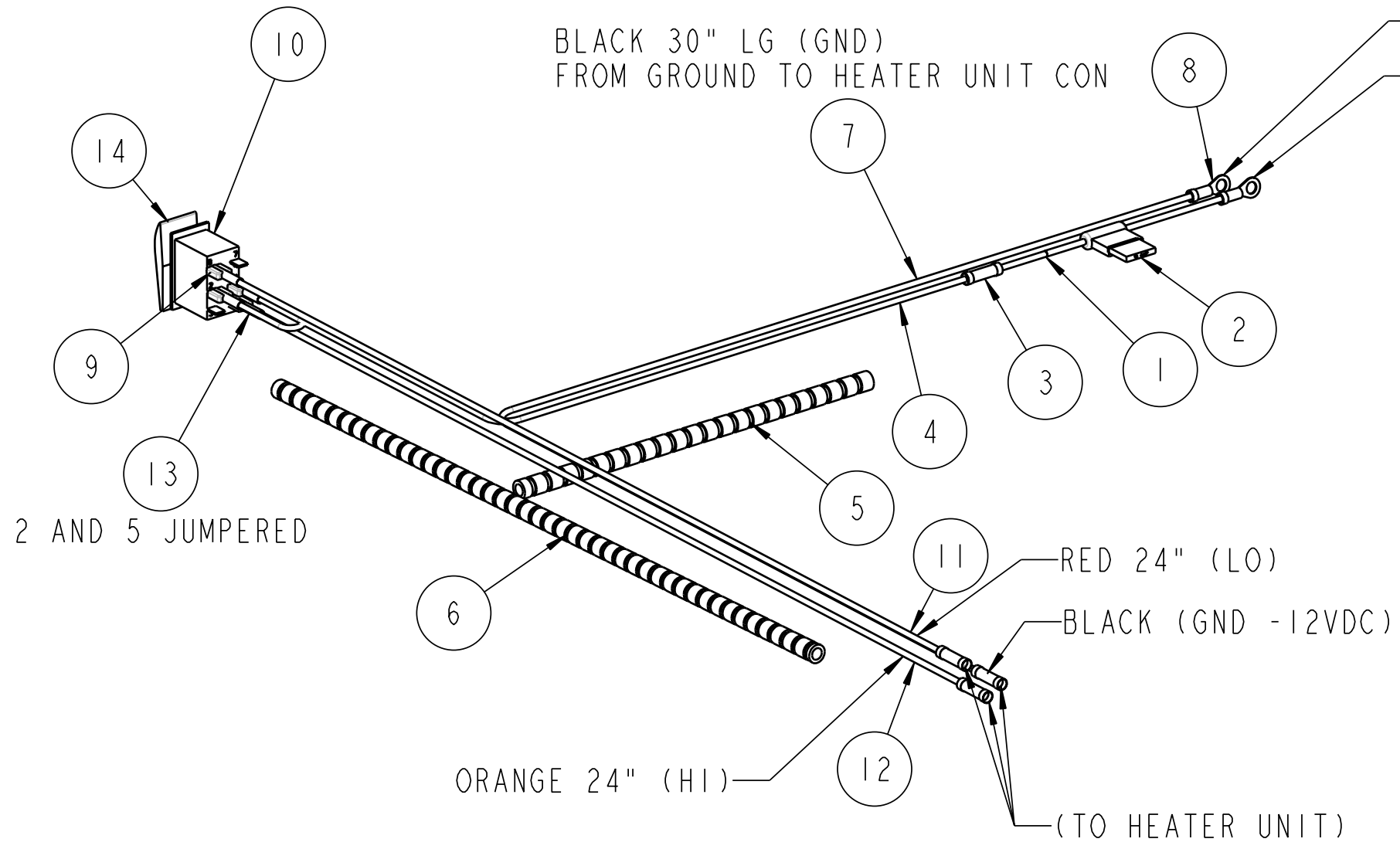
NAME:CAD2 OBJECT:4-14916 DATE:06-Dec-07 14:19:33



SWITCH LEGEND

TERMINAL 1/8 -LO SPEED (RED 24")  
 TERMINAL 2 AND 5 (JUMPERED) POWER IN  
 TERMINAL 6 -HI SPEED (ORANGE 24")

REV.	DCR NO.	DESCRIPTION	DRAFTSMAN	DATE
A	-	REPLACED BUTT CON WITH DUESTCH CON	CAD	12-19-05
B	9241	OMITTED TEE TAP; ADDED TERM EYE	CAD	12-06-07



ITEM #	DESCRIPTION	QTY
1	3-18231_FUSE_HOLDER_ATO_ATC	1
2	3-17060_FUSE_15_AMP	1
3	3-10672_BUTT_SPLICE_14GA_BLUE	4
4	3-10364_WIRE_RED_14GA_30	1
5	3-15133_WIRE_LOOM_375_X18_	1
6	3-15133_WIRE_LOOM_375X18	1
7	3-10345_WIRE_BLACK_14GA_30	1
8	3-11434_TERM_CON_250_STUD_BLU	2
9	3-10670_BLADE_CON_250_14GA_BLUE	4
10	3-18190_RCKR_SW_OFF_ON_ON_UNLIT	1
11	3-10364_WIRE_RED_14GA_X_24	1
12	3-14011_WIRE_ORANGE_14GA_24	1
13	3-10346_WIRE_RED_14GA_X_4	1
14	3-18191_RCKR_SW_ACTIVATOR_BLACK	1

THIS DOCUMENT CONTAINS CONFIDENTIAL INFORMATION AND IS THE PROPERTY OF CUSTOM PRODUCTS OF LITCHFIELD, INC. AND MAY NOT BE COPIED, REPRODUCED OR DISCLOSED IN ANY MANNER WITHOUT EXPRESSED WRITTEN CONSENT FROM CUSTOM PRODUCTS OF LITCHFIELD, INC.

<b>TOLERANCES UNLESS NOTED OTHERWISE</b> .X ± .09 .XX ± .06 .XXX ± .03 HOLE SIZE +.05/-.010 ANGLE ± .5°	<b>CUSTOMER NAME &amp; MOD NO.:</b> JD HPX	<b>MATL SPEC:</b> SEE BOM
	<b>CUSTOM PRODUCTS</b> 1715 SOUTH SIBLEY AVE. LITCHFIELD, MN 55355	
<b>TITLE:</b> WIRE HARNESS	<b>DRWG SIZE:</b> B	<b>DRWG NO.:</b> 3-18340
	<b>DATE:</b> 1-24-05	<b>REV LEVEL:</b> B

SCALE 0.330

NAME:CAD2 OBJECT:3-18340 DATE:06-Dec-07 14:16:36