

# COZY CABS

## MOUNTING INSTRUCTIONS With Replacement Parts Listing For TORO 355-D/455-D ROPS CAB A-11147



### OPTIONS

- |         |                    |
|---------|--------------------|
| 4-13069 | Heater Kit Option  |
| 4-13072 | Flashing Light Kit |
| 4-13070 | Headlight Kit      |
| 4-13071 | Defroster Fan Kit  |
| 4-11067 | Door Screen Kit    |



Manufactured by:

**CUSTOM PRODUCTS**  
OF LITCHFIELD, INC.

BOX 718 • LITCHFIELD, MINNESOTA 55355  
(320) 693-3221 Fax: (320) 693-7252  
1-800-222-5463

**'NOTE:**

**If the optional heater kit is to be installed, it is recommended that the hose connects to the engine be made before mounting the cab.**

# MOUNTING INSTRUCTIONS

## With Replacement Parts Listing For TORO 355-D/455-D ROPS CAB

**PLEASE COMPLETELY REVIEW INSTRUCTIONS BEFORE MOUNTING.**  
If you have any questions or comments please call 1-800-222-5438 and ask for technical assistance with the Toro 355/455 ROPS cab mounting.

### PREPARATION OF MACHINE

A. Bolt lower filler panel (Item #9 Mounting Kit) to the front of tractor frame.

1. Position panel over the two existing holes used for headlight mounts.
2. Secure with two 5/16" x 1" self tapping bolts. (Figure No. 1).



Figure 1

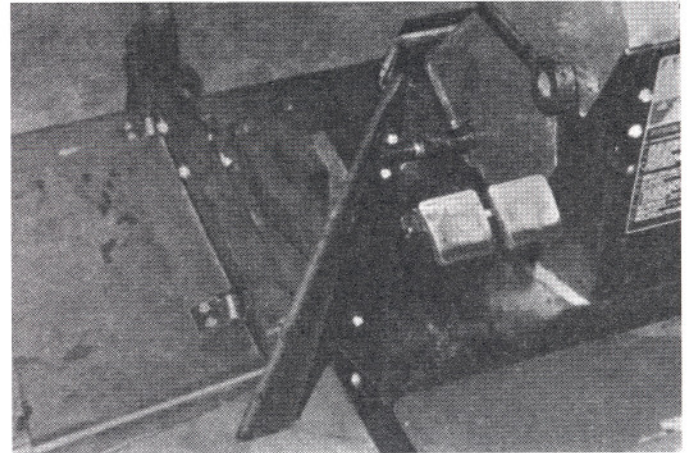


Figure 2

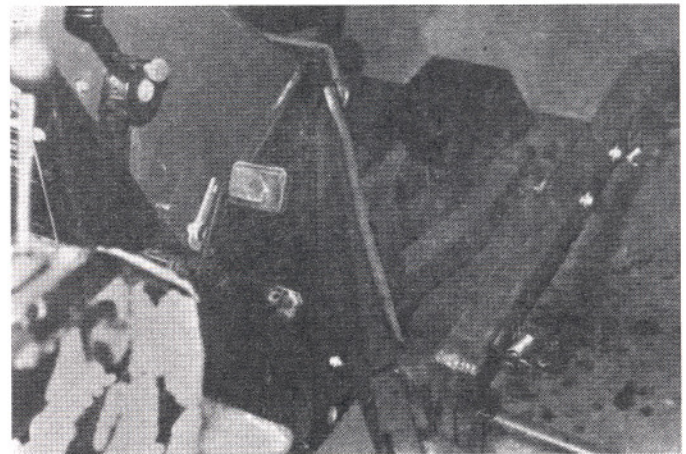


Figure 3

B. Attach front right and front left side seal assemblies to tractor frame sides.

1. Position left side seal assembly (Item #7 Mounting Kit) over the left side platform flange and butt up against Item #9. (Figure No. 2).
2. Match drill with a #7 (.201 dia.) drill bit, the two hole in Item #7 into the platform flange.
3. Secure seal assembly with two 1/4" x 3/4" self tapping bolts and washers.
4. Repeat this process with the right side seal assembly (Item #8 Mounting Kit) on the opposite platform flange. (Figure No. 3).

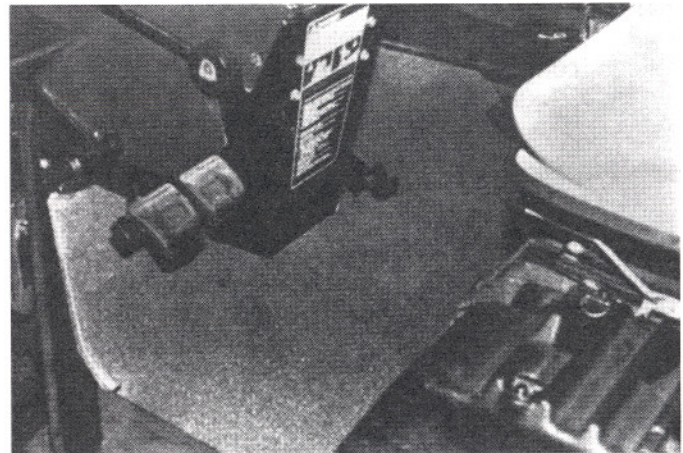


Figure 4

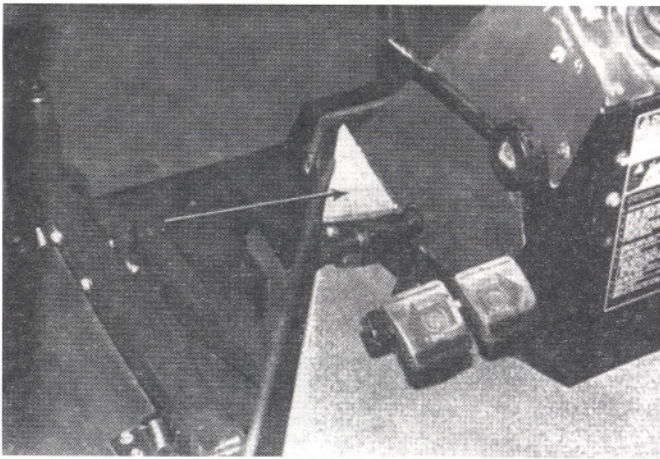


Figure 5

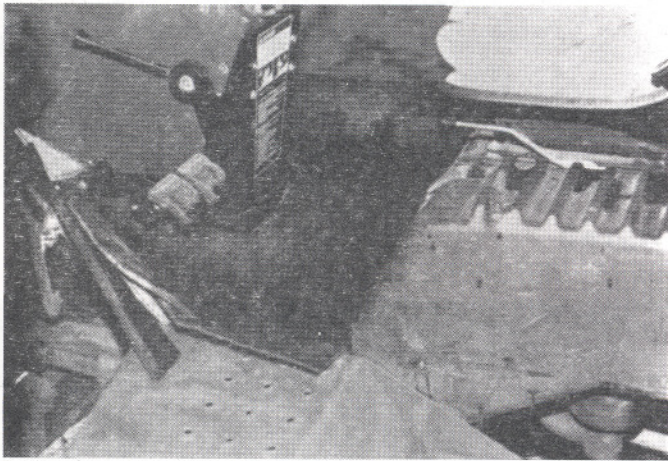


Figure 6

#### C. Installation of floor mat

1. Position floormat acoustical barrier (Item #24 Mounting Kit) onto the platform with cutouts around steering console and traction pedal. (Figure No. 4).
2. Fill area above brake pedals with the floormat corner section (Item #25 Mounting Kit). (Figure No. 5).
3. Cover barrier material with floormat. (Item #10 Mounting Kit). (Figure No. 6).

#### D. Finish installing sound insulation kit.

1. Familiarize yourself with the proper locations of each self adhering part of the sound kit.

Item #	Description	Location
26	1/2" Barrier 13 x 17.13	Fits under seat
27	1/2" Barrier 2.0 x 7.0	Inside front of fuel tank
28	1/2" Barrier 2.0 x 5.0	Upper front of fuel tank
29	1/2" Barrier 5.88 x 21.88	Right console along seat
30	1/2" Barrier 7.5 x 19.5	Front of right side console
31	1/2" Barrier 13.38 x 20.13	Outer right console, under cover
32	1/2" Barrier 6.13 x 19.0	Hinged cover, right side console
33	1/2" Barrier 9.0 x 21.25	Front of seat pedestal
1	Polyfoam, Grey, Sewn	Wraps insulated r-side console

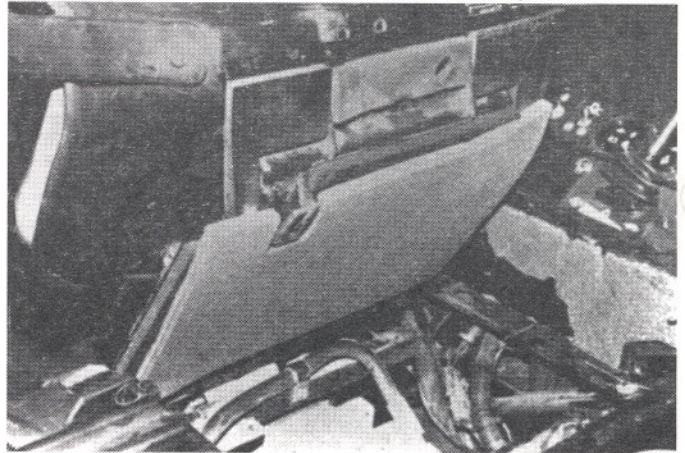


Figure 7

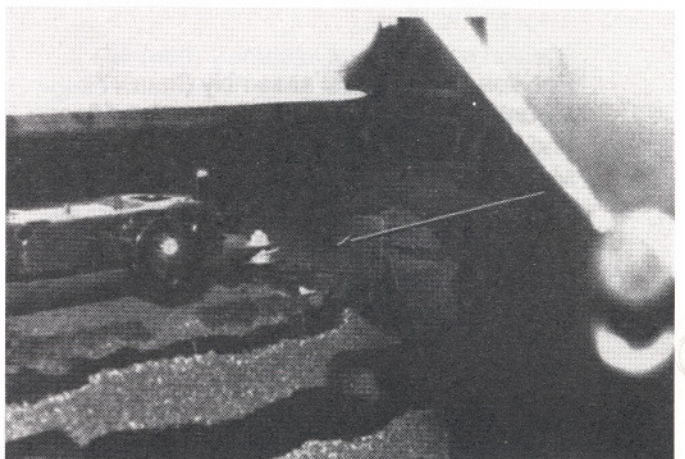


Figure 8

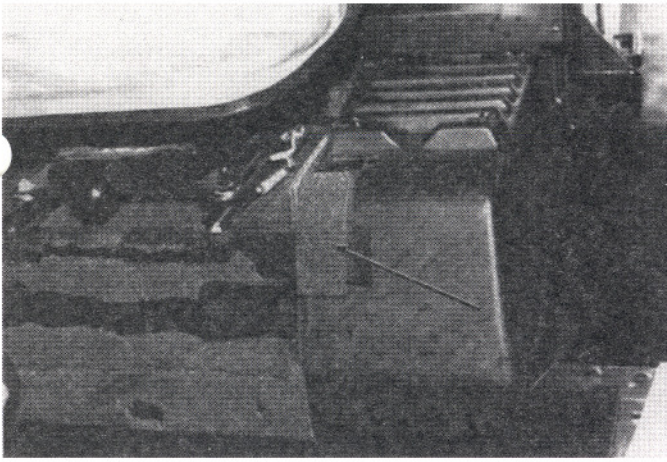


Figure 9

2. Apply each piece in the order listed above.
  - a. Position Item #26 under seat so the notch lines up with the mount on the left side of the seat pedestal. Remove backing and secure. (Figure No. 7).
  - b. Position Item #27 on the inside front of the fuel tank. Remove backing and Secure. (Figure No. 8).
  - c. Position Item #28 on the upper front left side of the fuel tank. Remove backing and secure. (Figure No. 9).
  - d. Match the slope of Item #29 with the slope of the right side console above the seat pedestal. Remove the backing and secure. (Figure No. 10).

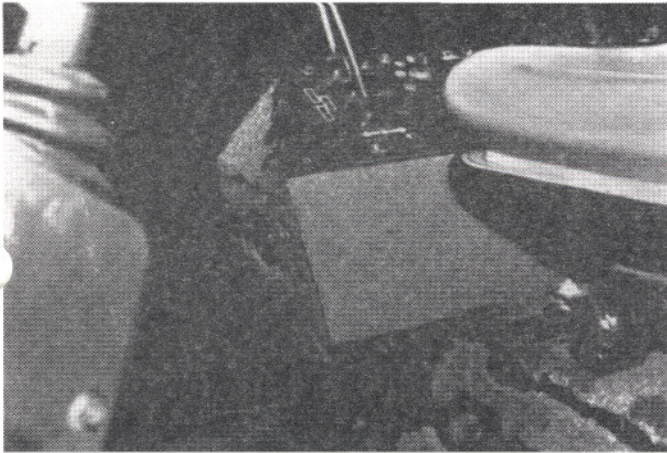


Figure 10

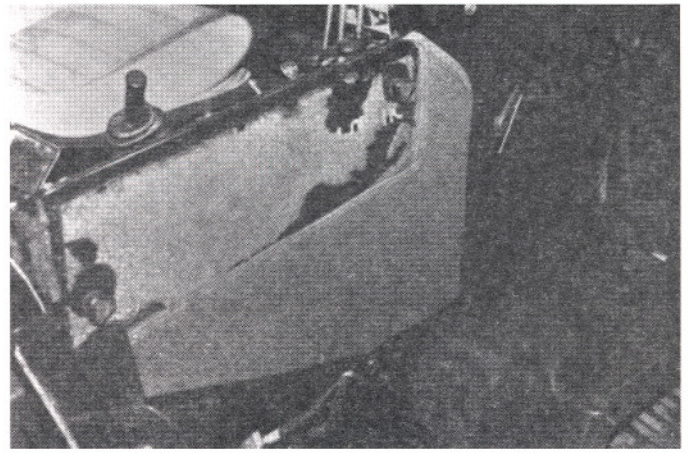


Figure 12

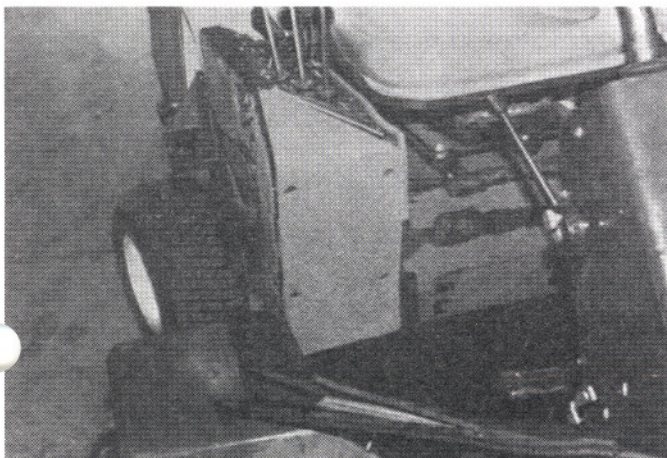


Figure 11

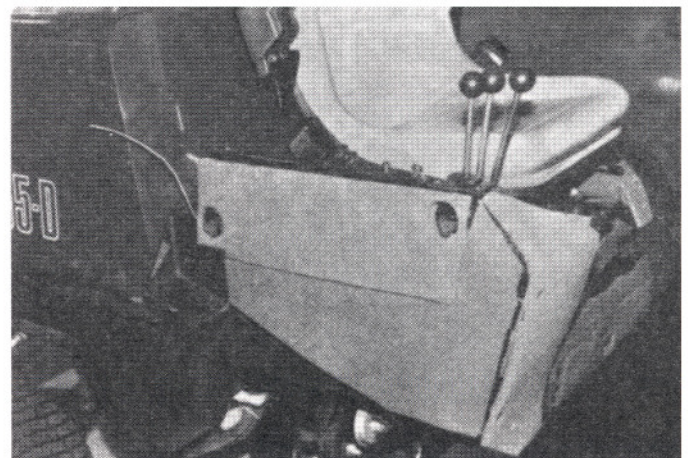


Figure 13

- e. Position Item #30 on the front of the right side console making sure the holes in the barrier material line up with the four bolts in the panel. Remove the backing and secure. (Figure No. 11).
- f. Position Item #31 below the hinged cover on the outside of the right side console. Remove the backing and secure. (Figure No. 12).

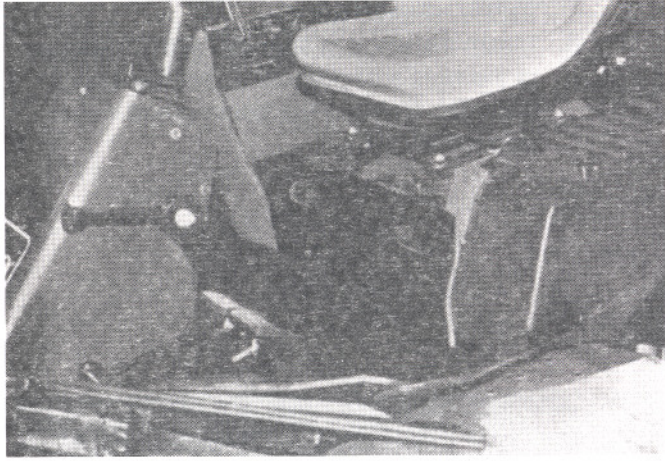


Figure 14

- g. Position Item #32 over the hinged cover on the outside of the right side console. Remove the backing and secure. (Figure No. 13).
- h. Position Item #33 on the removable front of the seat pedestal making sure the holes line up with the knobs. Remove backing and secure. (Figure No. 14).

**E. Attach rear mount weldment to tractor frame.**

1. Position the rear mount weldment (Item #2 Mounting Kit) across the tube located at the rear of the operator area of the tractor. (Figure No. 15).

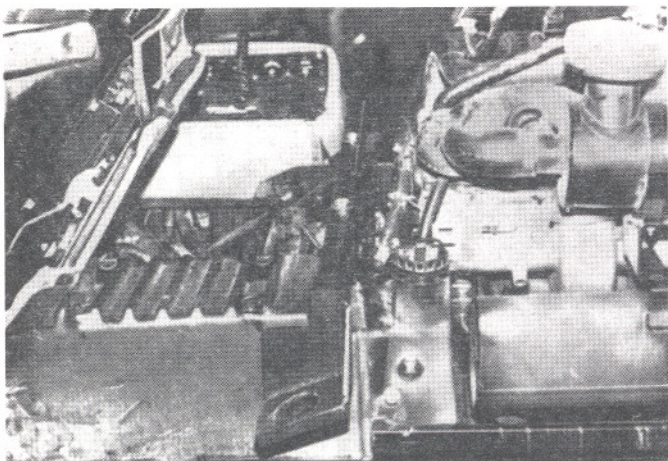


Figure 15

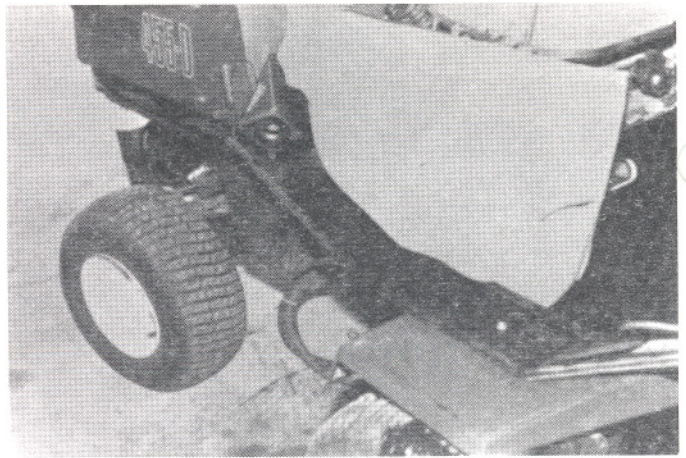


Figure 16

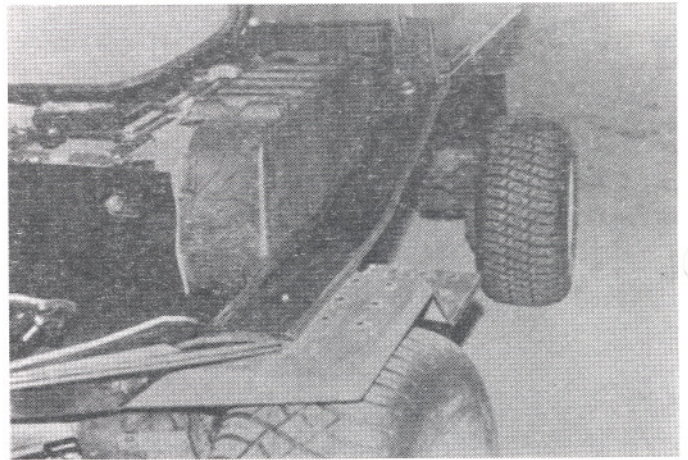


Figure 17



Figure 18

2. Secure mount with two 1/2" x 6 1/2" bolts, locknuts, and four flatwashers. You will have to tighten the bolts from under the tractor frame.

F. Install left and right bolt on seal assemblies.

1. Position left side seal assembly (Item #5 Mounting Kit) on top of left side entry step and floor mat.
2. Line up the large hole in the rear of the assembly with the hole in the cab mount weldment just installed. Be sure the seal assembly is pressed in as far as possible. (Figure No. 16).
3. Match drill a hole in the entry step using a #7 (.201 Dia.) drill bit. Secure the assembly to the step with a 1/4" x 3/4" selftapping bolt.
4. Repeat steps 1-3 for the right side seal assembly (Item #6 Mounting Kit). (Figure No. 17).
5. Secure the rear of the assemblies by pressing the class A side of the rubber mount (Item #3 Mounting Kit) up through the rear mount weldment and seal assembly. Slip the class C side of the mount (Item #4 Mounting Kit) over the class A side to secure the assembly.

G. Install isolation mounts on the front of the cab.

1. Press the class A sides of the mount (Item #3 Mounting Kit) into the front mount holes of the cab and slip class C side over it to secure. (Figure No. 18).

H. Lift tractor hood and seat.

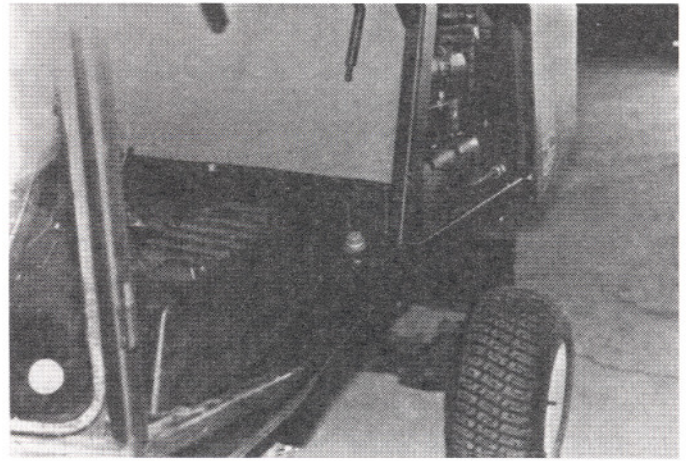


Figure 20



Figure 21

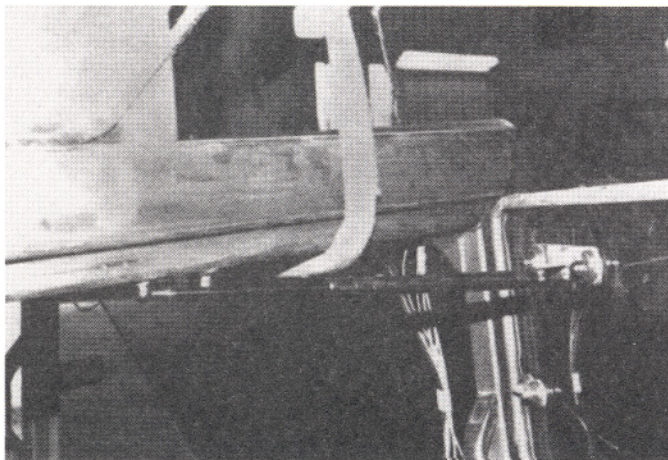


Figure 19

## MOUNTING OF CAB

A. Hoist Cab.

1. Open cab doors.
2. Run a lifting strap through the cab between the cab frame and the gas springs. (Figure No. 19).
3. Carefully hoist cab and position over tractor frame.

B. Secure to tractor frame.

1. Lower the cab slowly until rear mounting plates just touch the rear rubber mounts. Line up holes and loosely fasten with two 3/4" x 4 1/2" bolts, lockwashers, nuts, and four flatwashers. (Figure No. 20).
2. Lower the front of the cab tucking floor mat under front of cab frame. Line up the front mounting holes with rubber mounts on cab. Firmly secure the front mounts with two 3/4" x 3 1/2" bolts, lockwashers and flatwashers. (Figure No. 21).
3. Finish tightening the rear mounting hardware.

- C. Install larger entry step pad to left side of tractor frame.
1. Position entry step pad (Item #22 Mounting Kit) with the two bare edges facing the tractor frame. (Figure No. 22).
  2. Secure with three 1/4" x 1 1/4" bolts, flatwashers and nuts.

## WIRING OF CAB

- A. Run the power lead along the right hand side of cab to the outside of the right side console and in through the back side of the hinged cover. (Figure No. 23).
- B. Connect the terminal to the connection on the rear of the power relay. (Figure No. 24).
- C. Wrap Item #1 around insulated right side console and secure it in place with the velcro strips provided. (Figure No. 25).

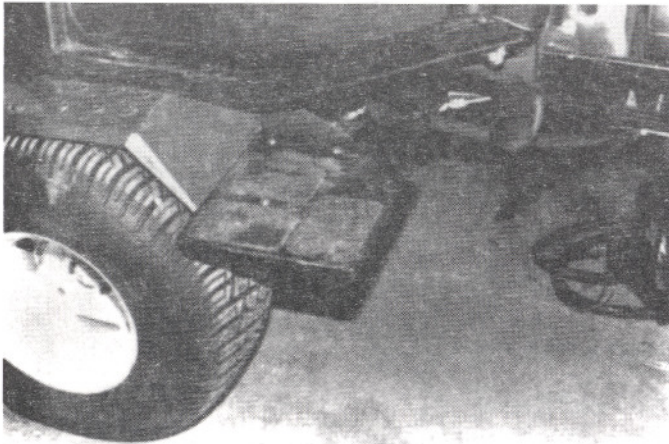


Figure 22

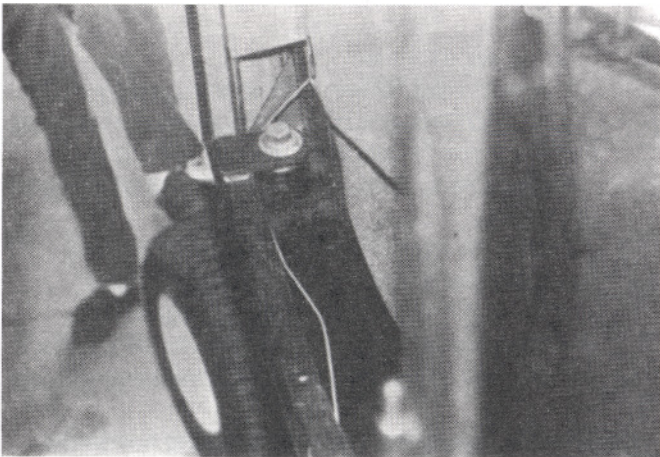


Figure 23

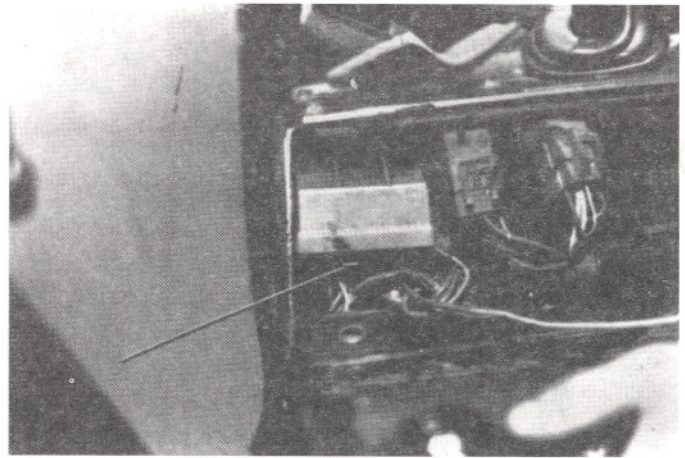


Figure 24

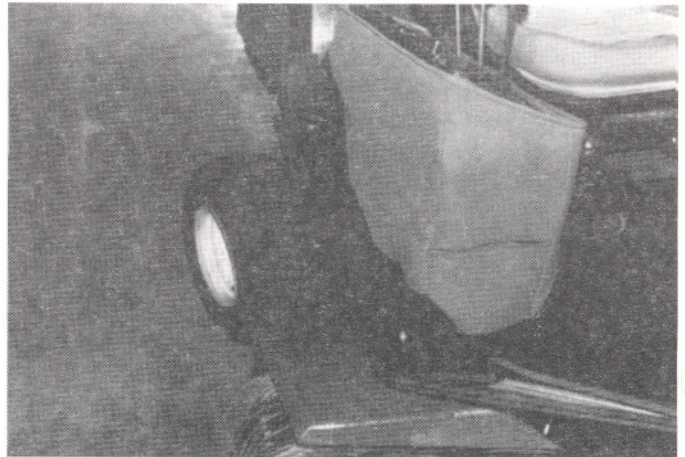


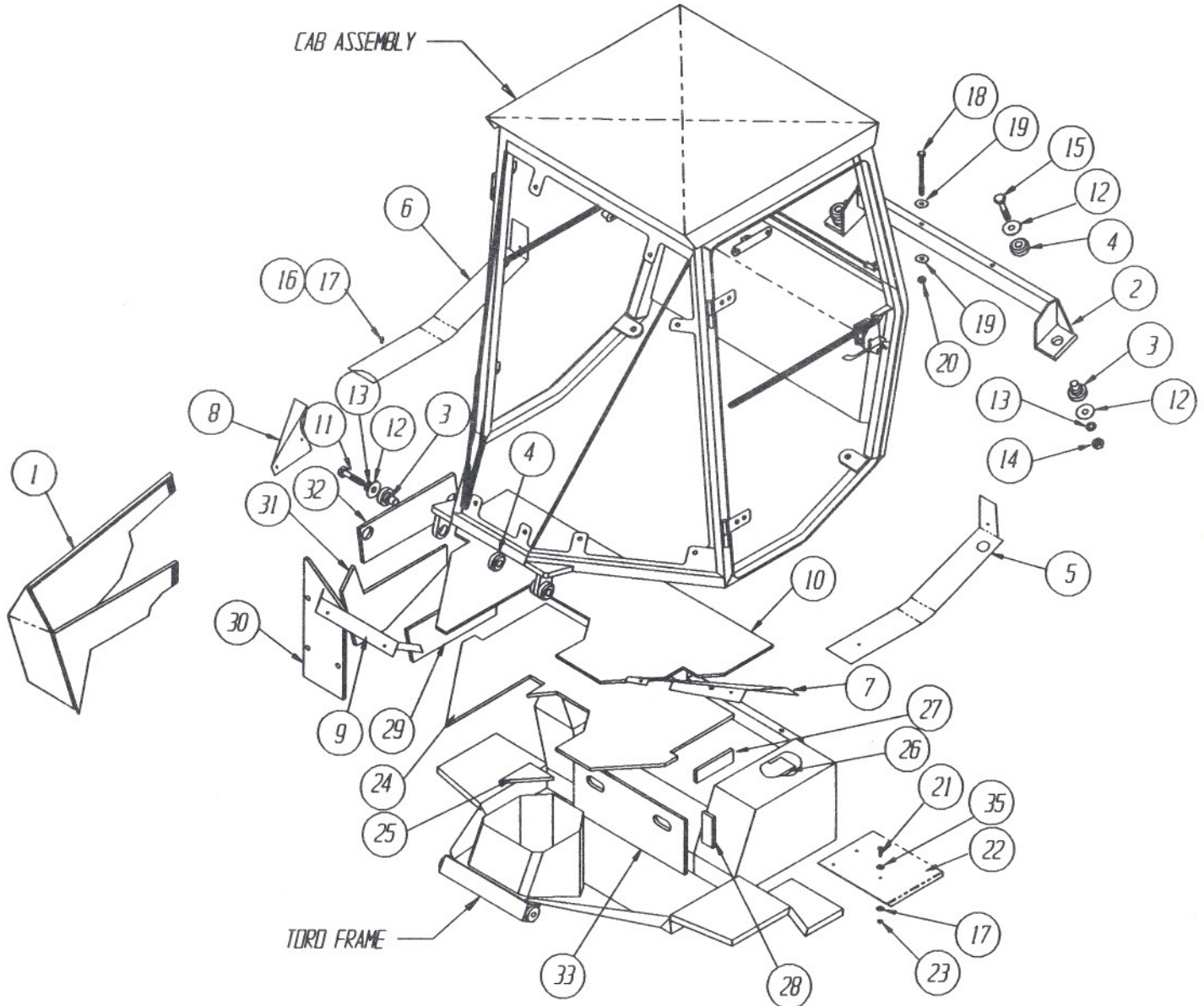
Figure 25



**REPLACEMENT PARTS**  
**MOUNTING KIT TORO 355-D/455-D CAB**  
**4-14115**

ITEM	QTY	PART NO.	DESCRIPTION
1	1	4-13077	Right side console cover assembly
	1	1-35623	Insulation, outer console cover
	1	1-35624	Insulation, front console cover
	1	1-35625	Insulation, inside console cover
	.4'	3-13854	Velcro, 1" wide hook
	.4'	3-10635	Velcro, 1" wide loop
2	1	2-14405	Rear mount weldment
3	4	3-11273	Rubber mount class A
4	4	3-11275	Rubber mount class C
5	1	4-13046	Left side seal assembly
	1	1-35423	Bolt on seal panel Lt
	3'	3-11280	90 deg clip on bubble rubber Lg.
	3'	3-15068	180 deg clip on bubble rubber 3/8"
6	1	4-13047	Right side seal assembly
	1	1-35426	Bolt on seal panel Rt
	3'	3-11280	90 deg clip on bubble rubber Lg.
	3'	3-15068	180 deg clip on bubble rubber 3/8"
	2	3-10319	Plastic hole plug 1 3/8" Dia.
7	1	4-13044	Right front seal assembly
	1	1-35425	Right front seal panel
	2'	3-11280	90 deg clip on bubble rubber Lg.
8	1	4-13043	Left front seal assembly
	1	1-35422	Left front seal panel
	2'	3-11280	90 deg clip on bubble rubber Lg.
9	1	4-13045	Front bolt on seal assembly
	1	1-35427	Front bolt on panel
	2'	3-15068	180 deg clip on bubble rubber 3/8"
10	1	1-35619	Floormat
11	2	3-10425	3/4"-10NC x 3 1/2" Gr. 5 Bolt
12	6	3-10142	3/4" Flatwasher
13	4	3-10081	3/4" Lockwasher
14	2	3-10069	3/4"-10NC Hex nut
15	2	3-10426	3/4"-10NC x 4" Gr. 5 Bolt
16	8	3-10127	1/4" x 3/4" Selftap
17	2	3-10084	1/4" Flatwasher
18	2	3-15121	1/2"-13NC x 6 1/2" Gr. 5 Bolt
19	4	3-10087	1/2" Flatwasher
20	2	3-10379	1/2"-13NC Nylock hex nut
21	3	3-10009	5/16"-18NC x 1 1/8" Gr. 5 Bolt
22	1	4-13076	Foot step assembly
	1	1-35615	Foot step extension
23	3	3-10072	5/16"-18NC Nylock hex nut
24	1	3-16069	Barrier, floormat
25	1	3-16068	Barrier, corner section
26	1	3-16065	Barrier, seat mount
27	1	3-16066	Barrier, left seat side
28	1	3-16067	Barrier, upper left fuel tank
29	1	3-16070	Barrier, inside right side console
30	1	3-16063	Barrier, front console cover
31	1	3-16062	Barrier, outer lower console
32	1	3-16061	Barrier, hinged console cover, outside

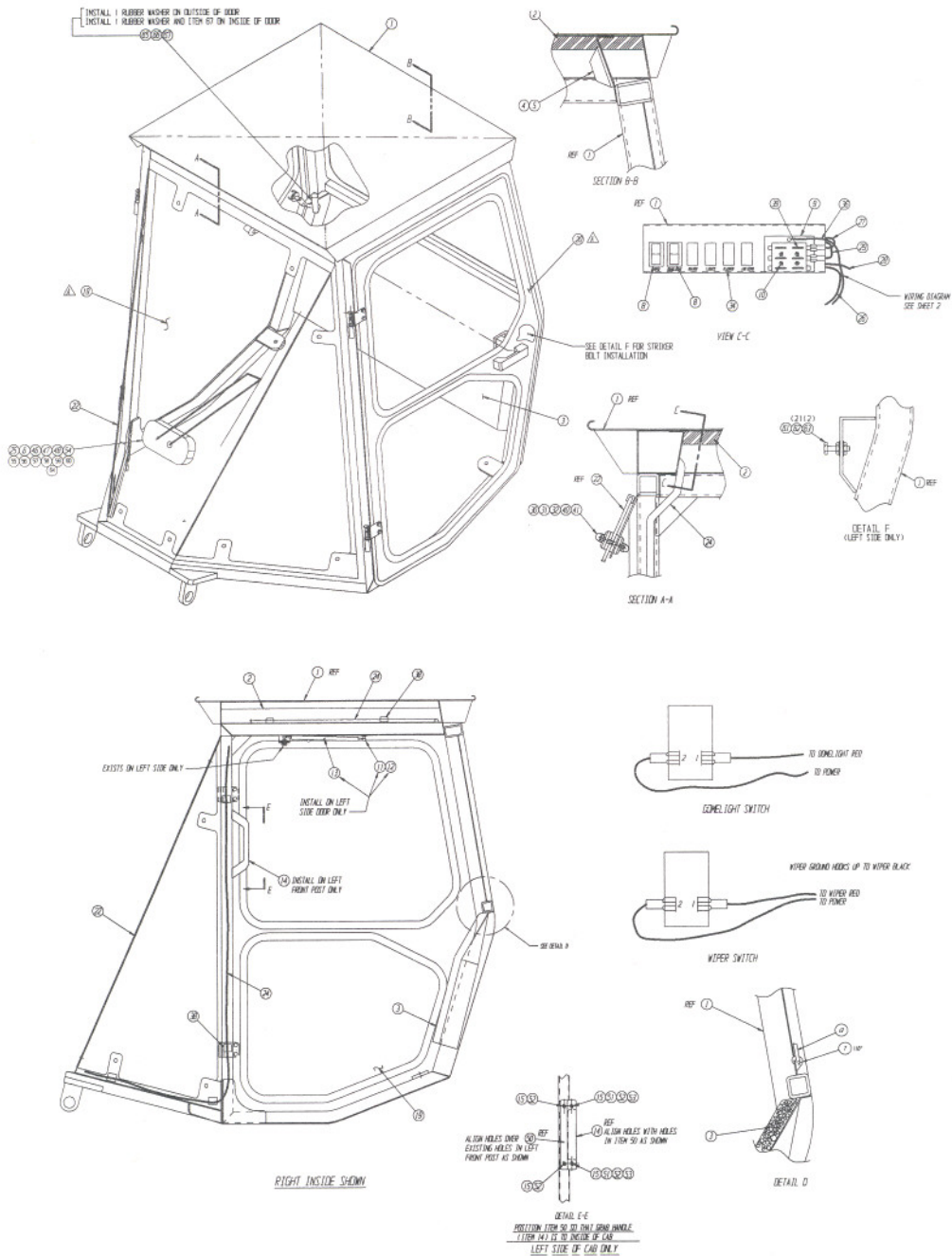
33	1	3-16064	Barrier, front seat pedestal
34	2	3-10380	5/16" x 1 Selftap
35	6	3-10085	5/16" Flatwasher



**REPLACEMENT PARTS  
CAB ASSEMBLY TORO 355-D/455-D CAB  
4-14103**

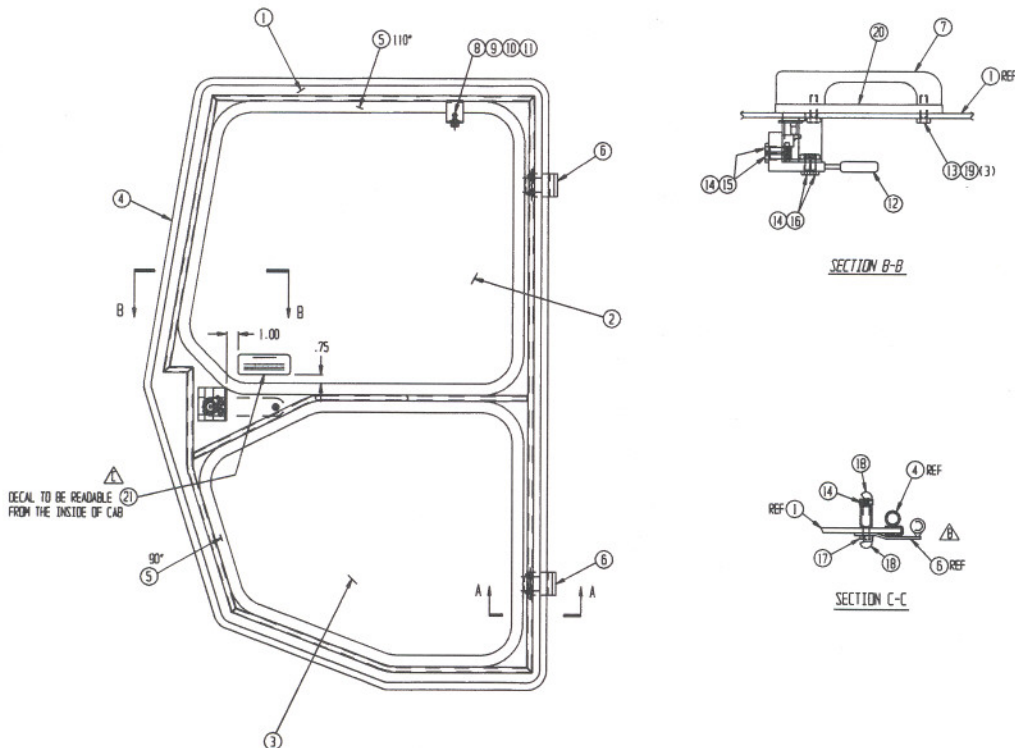
ITEM	QTY	PART NO.	DESCRIPTION	
2	1	1-35301	Insulation, Roof	
3	1	1-35602	Insulation , Lower Rear	
4	1	3-16010	Dome Light	
5	2	3-10243	Selftap #8 x .500	
6	1	3-11099	Wiper Motor	
7	3.5'	3-10649	Window rubber	
8	2	3-16274	Rocker Switch	
9	1	3-16033	Fuse Block	
10	4	3-10099	MSCR. #10 x 1.5	
11	1	3-11821	Ball Stud	
12	1	3-17020	Slider Window, Rear	
13	1	3-11929	Gas Spring, 6"	
14	1	3-15675	Grab Handle	
15	6	3-10105	MSCR. #10 x .75	
19	1	4-14143	Door Assembly, RH	
20	1	4-13269	Door Assembly, LH	
22	1	4-14024	Assembly, Front Window	
		1	3-16828	Glass, Front
		2	3-15957	Glass, Front, Sides
	10.3 oz.	3-15095	Silicon Sealant, Black	
	14.5'	3-15569	Trim Seal	
23	1	3-14575	Decal, Serial No.	
24	12.5'	3-10704	Wire Duct	
30	10	3-16217	Washer, Glass Mount	
31	10	3-15768	Washer, Glass Mount, Delrin	
32	10	3-15995	Cap, 1/4" Hex Head	
33	2	3-11853	Decal, "Cozy"	
34	1	3-16012	Decal, Switches, Toro	
38	10	3-15366	Clamp, PSA Backed	
39	2	3-16057	Fuse, 10 Amp.	
40	10	3-10070	1/4" Nylock Nut	
41	10	3-10383	Hhcs. 1/4" x 1.75	
42	1	1-35670	Insulation, Front Roof	
43	2	1-35671	Insulation, Side Roof	
44	2	1-35672	Insulation, Rear Roof	
45	1	3-14944	Adhesive	
46	1	3-15776	Wiper Arm, 16"	
47	1	3-15763	Wiper Blade, 16"	
48	1	3-15577	Wiper Motor Cover	
50	1	1-37206	Mount, Grab Handle	
51	2	3-10110	Nut, Hex, #10-24	
52	4	3-10088	3/16" Lock Washer	
53	2	3-10083	3/16" Flat Washer	
54	2	1-22030	Spacer, Plastic	
55	1	3-10112	3/16" Fiber Washer	
56	1	3-10308	#10-24 Nylock Nut	
57	1	3-11117	Wiper Nut	
58	1	3-10645	1/4" Rubber Washer	

59	1	3-12945	5/8" Fiber Washer
60	1	3-10716	5/8" x 1" Bushing
61	1	3-12591	Hhcs. 5/16" x 1.75
62	2	3-10085	5/16" Flat Washer
63	2	3-10064	5/16" Nut
64	1	3-16305	Gasket, Wiper Arm
65	1	3-15993	Latch, Right Side Door
66	1	3-15576	Roll Pin
67	1	3-16206	11/16" Rubber Washer



**REPLACEMENT PARTS  
DOOR ASSEMBLY TORO 335-D/455-D CAB  
4-13269 LEFT**

ITEM	QTY	PART NO.	DESCRIPTION
1	1	2-14722	Weldment, door (Left door)
2	1	3-16517	Glass, upper
3	1	3-16518	Glass, lower
4	13.5 ft.	3-15952	Trim Seal, 3/4"
5	17 ft.	3-10649	Rubber, window, offset
6	2	2-14731	Weldment, hinge (L.H. door)
7	1	3-15574	Handle, exterior, black
8	1	3-11821	Ball Stud, gas spring
9	1	3-10085	Washer, flat, 5/16"
10	1	3-10077	Washer, lock, 5/16"
11	1	3-10064	Hex Nut, 5/16"
12	1	3-15969	Rotary latch, left door
13	3	3-12692	Bolt, M6 X 15 X1.0
14	8	3-10070	Hex Nut, Nylock, 1/4" -20
15	2	3-10220	Bolt, 1/4" -20 X 1.00
16	2	3-10219	Bolt, 1/4" -20 X 3/4"
17	4	3-10204	Bolt, 1/4" -20 X 1.50
18	8	3-15995	Cap, 1/4" Hex Head
19	3	3-10076	Washer, Lock, 1/4"
20	1	1-37207	Spacer, door handle
21	1	3-16395	Decal, caution



**REPLACEMENT PARTS  
DOOR ASSEMBLY, RH 4-14143  
TORO 355-D/455-D**

ITEM	QTY	PART NO.	DESCRIPTION
1	1	2-14723	Weldment, Door, Right
2	1	3-16517	Glass, Upper Door
3	1	3-16518	Glass, Lower Door
4	13.5'	3-15952	Trim Seal
5	17'	3-10649	Window Rubber
6	2	2-14732	Weldment, Hinge
7	4	3-10070	1/4" Nylock Nut
8	4	3-10204	1/4" HHCS x 1.50
9	4	3-15995	Cap, 1/4" Cap Screw

