

COZY CABS

MOUNTING INSTRUCTIONS

With Replacement Parts List

for

TORO GROUNDSMASTER

580D

ROPS Cab A-10844



OPTIONS

- 4-11849 Two Speed Wiper Kit
- 4-12676 Front Work Lights
- 4-12670 Heater Kit
- 10693 Roof Top Flasher Kit (Not compatible with air conditioner)
- A-10965 Entry Step (Not compatible with mower decks)



Manufactured by:

CUSTOM PRODUCTS
OF LITCHFIELD, INC.

BOX 718 • LITCHFIELD, MINNESOTA 55355
(320) 693-3221 Fax: (320) 693-7252
1-800-222-5463

05-10267
August 2000

SAFETY INSTRUCTIONS

Read operator's manual. Be thoroughly familiar with the controls, capabilities, and proper use of the equipment.

NEVER ALLOW ANY RIDERS.

Thoroughly inspect ROPS Cab and ROPS Cab Mounting periodically.

Thoroughly inspect 4-Post ROPS and 4-Post ROPS Mounting periodically.

Stay alert for hidden hazards and traffic.

Avoid sudden starts, excessive speeds, and sudden stops when operating on hillside, rough ground and most off-the-road operations.

Use extreme care when working close to fences, ditches, or on hillsides.

Wait for tractor to STOP before dismounting.

Check clearance carefully before driving under any objects.

Avoid operating sideways on a steep slope whenever possible.

Never exceed factory recommended specifications.

Do not weld, cut, drill or modify ROPS in any manner unless instructed by manufacturer.

ROLL BAR SPECIFICATIONS

MODEL	MAXIMUM WEIGHT CAPACITY (Mower and Implements)
A-10844	6500#

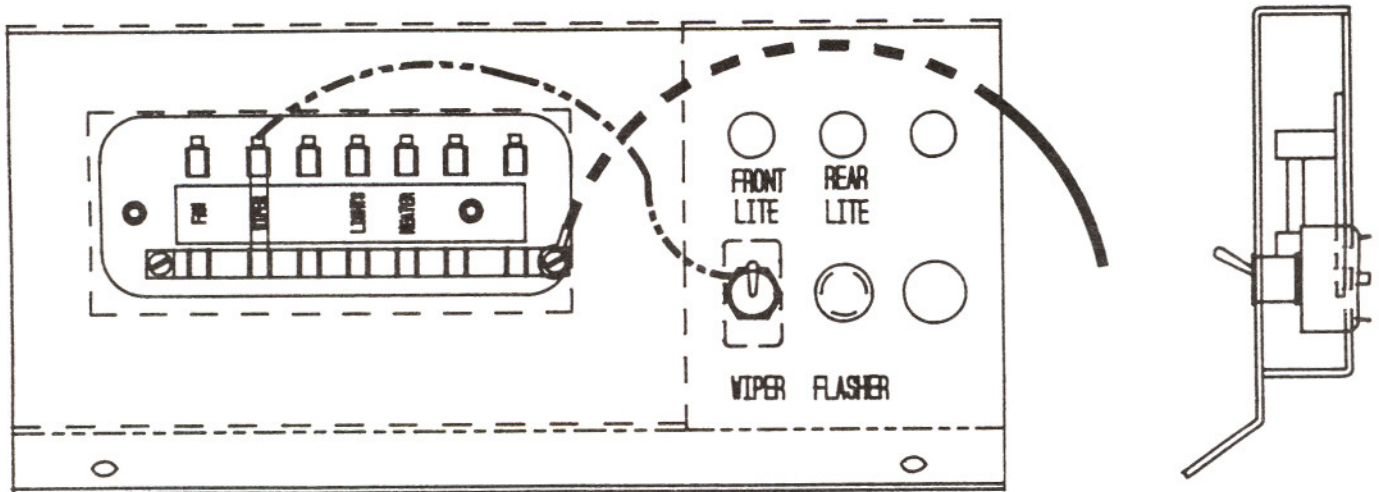
TORQUE TIGHTENING CHART

Use the following charts for all torque applications.

U.S. Bolt Size	Torque Grade 5	
	ft.-lb.	N•m
1/4-20	7-9	9-12
5/16-18	10-15	15-20
3/8-16	20-25	25-35
7/16-14	30-40	40-55
1/2-13	50-60	70-80
9/16-12	70-90	95-120
5/8-11	100-120	135-160
3/4-10	180-220	245-300

Metric Bolt Size	Torque Class 8.8	
	ft.-lb.	N•m
M- 8	17-20	23-27
M-10	34-40	45-55
M-12	55-65	75-90
M-14	91-109	125-145
M-16	145-166	196-225

NOTE All torque specifications apply to plated or oiled fasteners. When non-plated or dry fasteners are used, increase recommended torque by 20%. When tightening bolts into aluminum parts, tightening torques are 65% of the specified value in the charts.



TORO 580D ACCESSORY MOUNT PANEL

MOUNTING INSTRUCTIONS

and replacement parts list for

TORO GROUNDMASTER 580D

ROPS CAB

PLEASE COMPLETELY REVIEW MOUNTING INSTRUCTIONS BEFORE MOUNTING CAB.

If you have any questions or comments please call 1-800-222-5463 and ask for technical assistance with Toro 580D Cab.

PREPARATION OF MACHINE

- A. Lower all cutting decks.
- B. Remove air intake cowling shown in Figure No. 1 from machine.
- C. If a Toro road kit has been installed on the machine the front shroud and headlights must be removed.
- D. Drill two $17/32$ " holes, 18" apart, centered on the front of the platform shown in Figure No. 2.
- E. Bolt angle to the front of the platform using two $1/2$ " x $1\ 1/2$ " bolts, flatwasher, lockwasher and nuts.
- F. Install the 5" piece of clip on bubble rubber from the mounting kit onto the right side of the platform as shown in Figure No. 3.
- G. Remove right side console cover.
- H. Insert rubber grommet into the hole near the platform on the right side console.
- I. Install floor mat. The mat should fit reasonably close but some trimming may be necessary.

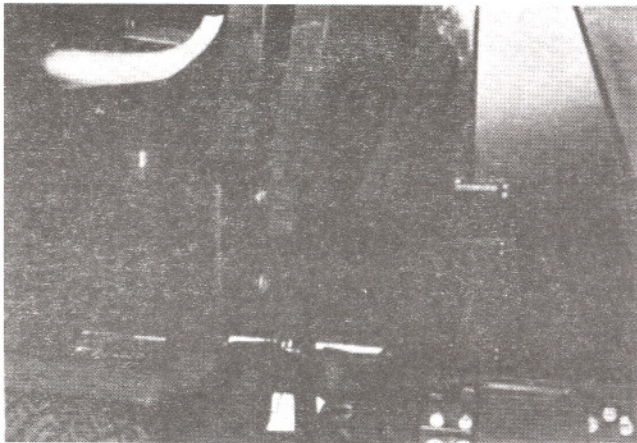


Figure 1



Figure 3

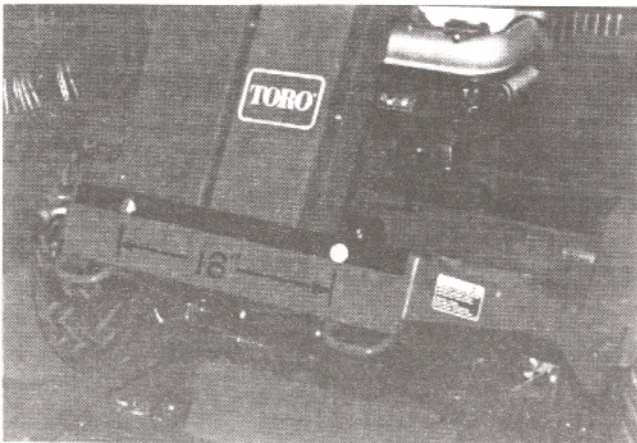


Figure 2

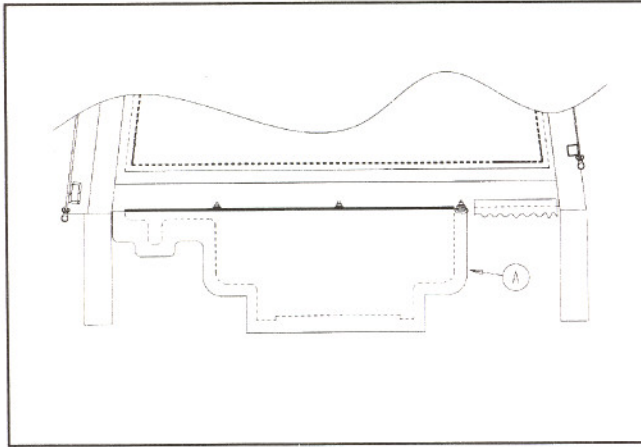


Figure 4

INSTALLATION OF SEAT BELT

- A. Bolt seat belt to holes in the back of the seat using two 7/16" x 1" fine threaded bolts, flat washers and lock washers (Figure No. 7).

NOTE: The lynch pin which keeps the seat from tipping must be in place during operation in order for the seat belt restraining system to function properly.

PREPARATION OF CAB

- A. Remove rear filler panel shown in Figure No. 4-A from cab.
 B. Remove right side bolt on panel shown in Figure No. 5.
 C. Hoist cab and remove from shipping stand.

MOUNTING OF CAB

- A. Lower cab onto machine inserting the rear tapped blocks into the roll bar mount tubes.
 B. As the cab comes to rest on the machine, some adjustment of the sealing rubber may be necessary to achieve a proper seal.

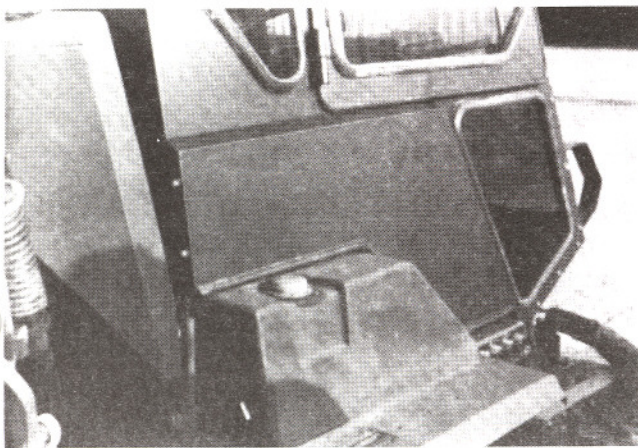


Figure 5

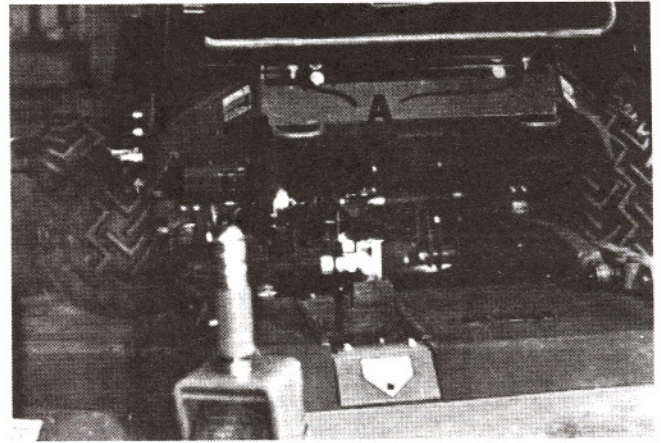


Figure 6

- C. Once the cab is down, fasten the front of the cab to the mount angle as seen in Figure No. 6-A using two 1/2" x 1 1/2" bolts, flat washers, lock washers and nuts.
 D. Install four 3/4" x 2" bolts and lock washers into the rear mounts.
 E. Reinstall the rear filler panel onto cab.
 F. Reinstall air intake cowling.

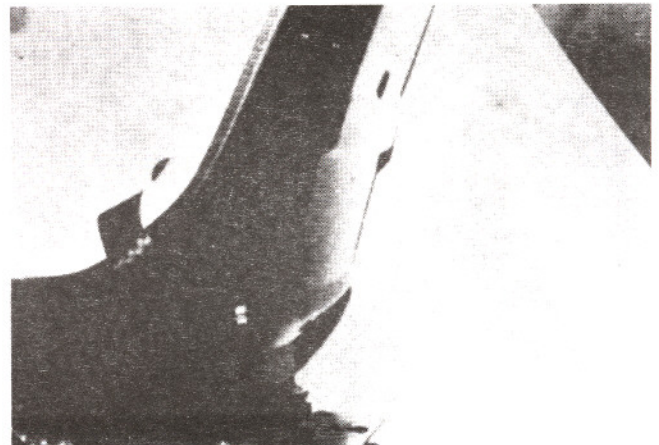


Figure 7

WIRING OF CAB

- A. Run the power lead along the edge of the platform, through the grommet in the side console and to the connecting terminal shown in Figure No. 8-A.
 B. Secure conduit to the side of the platform using the plastic wire clips as shown in Figure No. 9.
 C. If the machine had a road kit, the headlights can now be installed onto the brackets provided on the cab front. The flashers can be mounted to the upper rear sides of the cab.

NOTE: In order to locate the lights in these positions their lead wires will have to be lengthened.

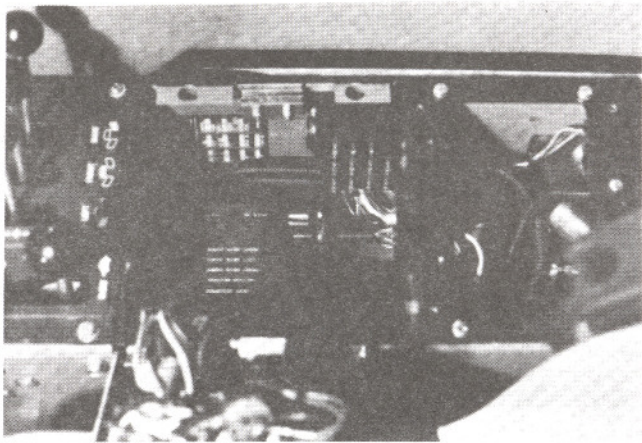


Figure 8

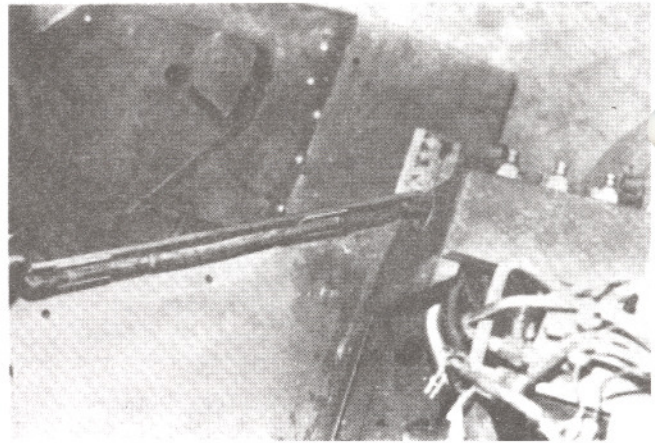
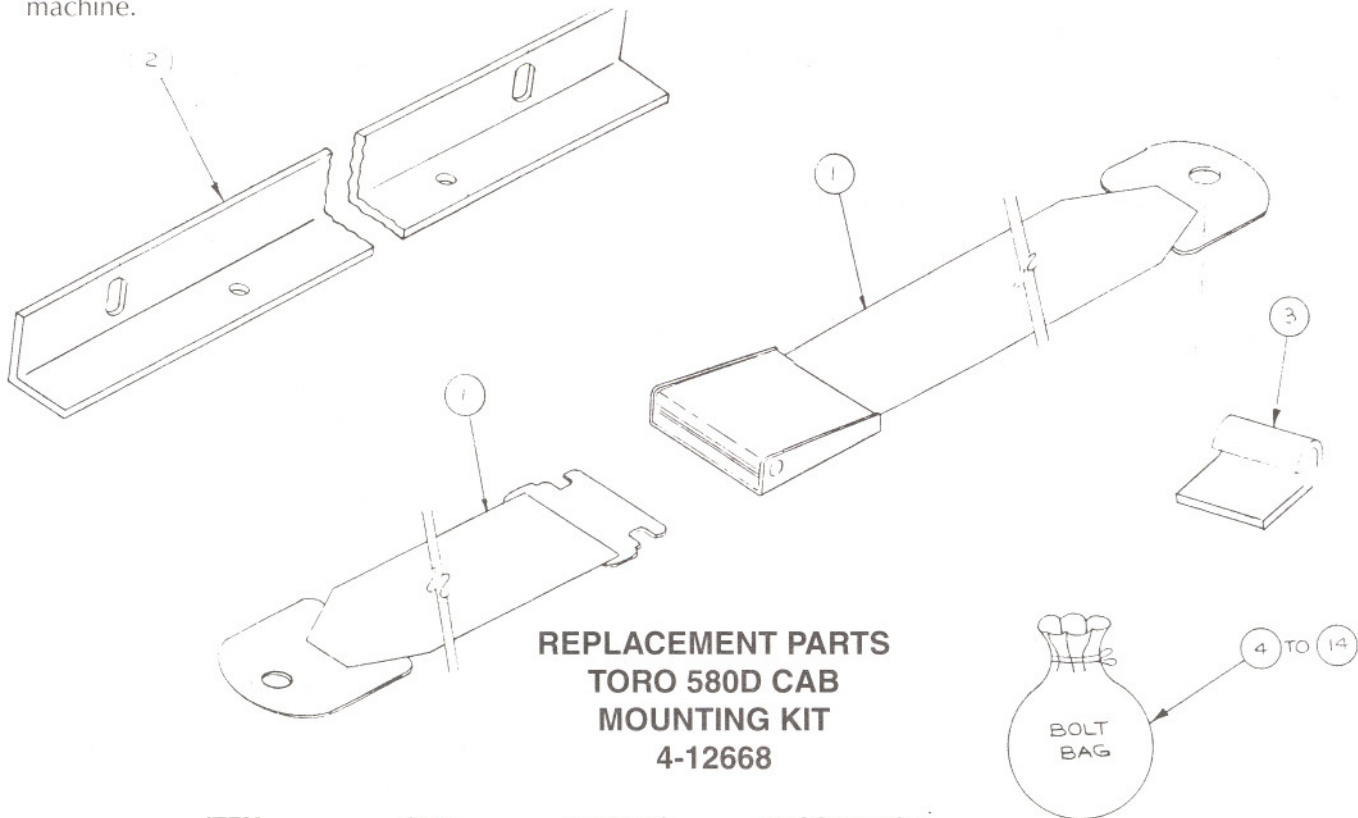


Figure 9

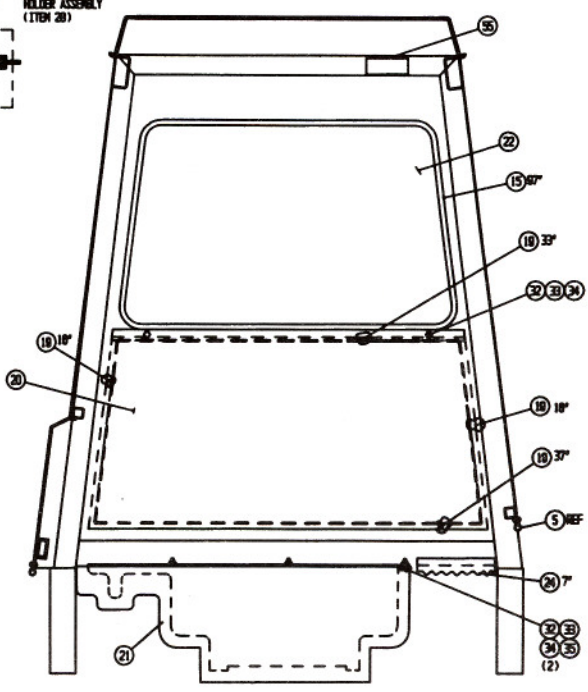
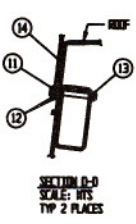
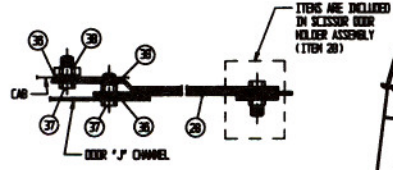
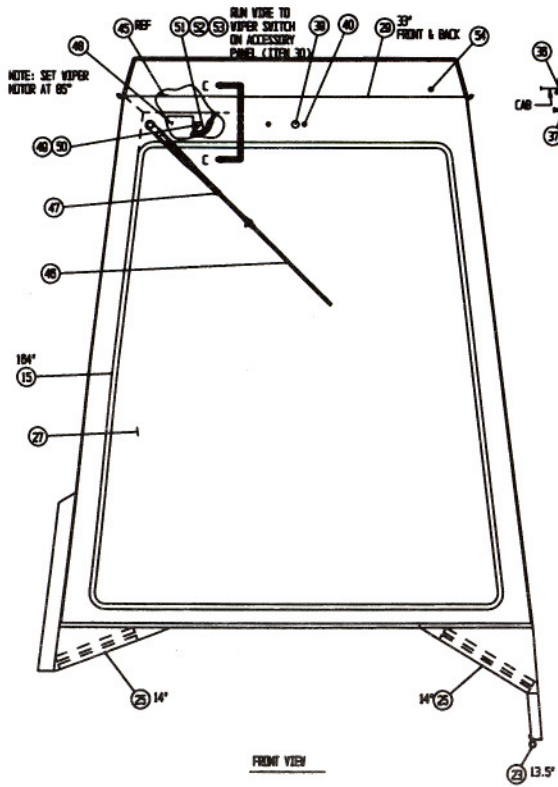
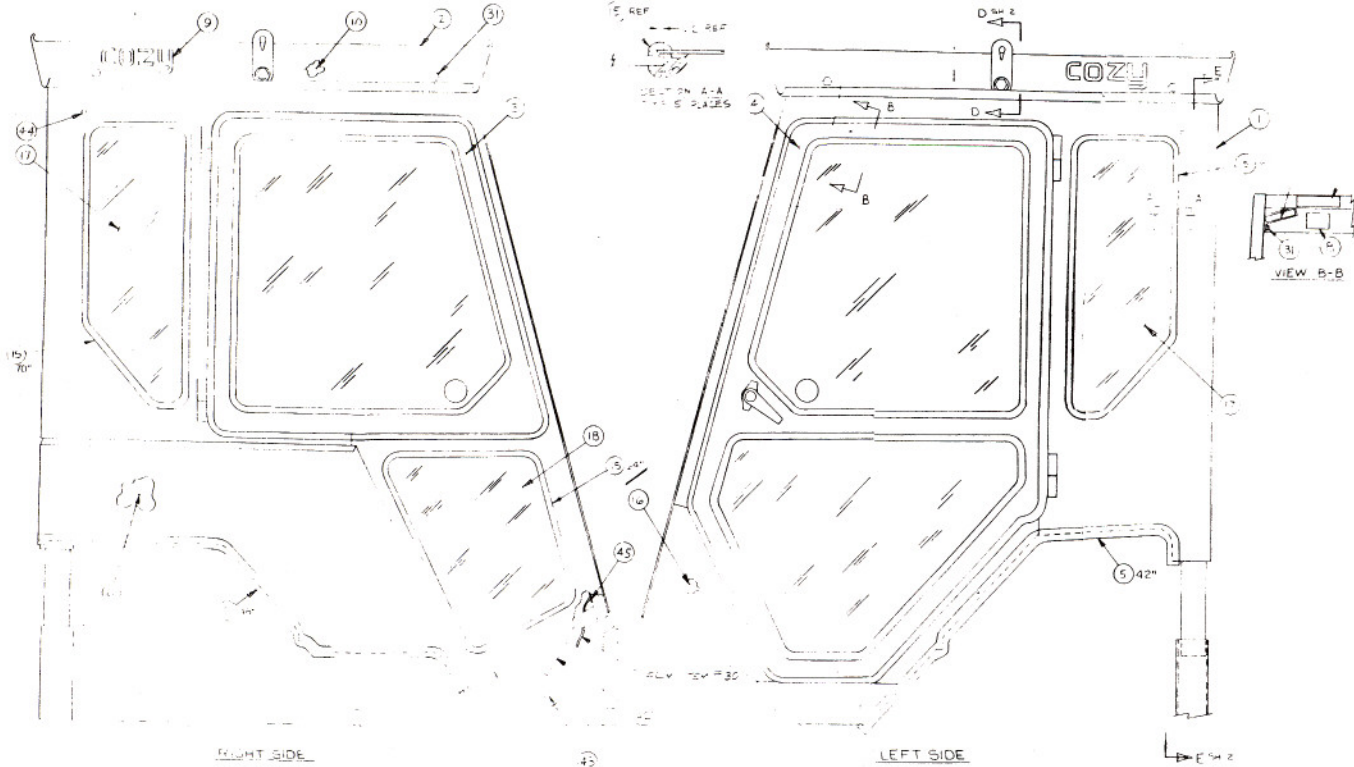
D. Replace the right side console cover on the machine.

E. Bolt the removable right side panel back on the cab.



**REPLACEMENT PARTS
TORO 580D CAB
MOUNTING KIT
4-12668**

ITEM	QTY	PART NO.	DESCRIPTION
1	1	3-10287	Seal Belt
2	1	1-31974	Front Mount Angle
3	3	3-10372	Plastic Clip
4	1/2'	3-10609	Rubber Clip On 90°
5	4	3-10046	.50 x 1/5 Bolt
6	4	3-10423	.75 x 2.0 Bolt
7	2	3-13708	.43 x 1.0 Bolt
8	4	3-10067	.50 Hex Nut
9	2	3-10152	.43 Lockwasher
10	4	3-10079	.50 Lockwasher
11	4	3-10081	.75 Lockwasher
12	2	3-10166	.43 Flatwasher
13	8	3-10087	.50 Flatwasher
14	1	05-10267	Manual
15	1	1-33619	Foam Seal, 1 1/2" Square
16	1	3-12723	Grommet, Rubber, 1 1/2"
17	1	1-35285	Floor mat



**REPLACEMENT PARTS
TORO 580D CAB
A-10844**

ITEM	QTY	PART NO.	DESCRIPTION	ITEM	QTY	PART NO.	DESCRIPTION
1	1	2-13873	Cab Weldment	24	3/4'	3-10607*	Rubber Clip-On 90° 3" Flap
2	1	4-12665	Roof Assembly	25	as required	3-10610*	Rubber Clip-On 180° Small
	1	2-13867	Roof Weldment	27	1	3-15216	Glass, Front
	1	1-32014	Roof Back Insulation	28	2	4-10055	Scissor Door Handle Assembly
	1	1-32015	Roof Front Insulation				
	2	1-32020	Roof End Insulation	29	5 1/2'	3-10834*	.31 x 1.0 Polyfoam Seal
3	1	4-12661	Swingout Assembly	30	1	4-12667	Accessory Mount Panel Assembly
	1	2-13871	Swingout Assembly				
	1	3-15213**	Glass, Swingout		1	2-13748	Accessory Mount Panel Weldment
	9'	3-10649*	Rubber, Window 1/8" Offset				
	11'	3-12138*	Rubber, Clip-On Door Seal		1	3-13008	Fuse Block
	1	3-11127	Inside Latch Left		2	3-10448	#8 x .50 Self Tapping Screws
	4	3-12057	.25 x .50 Self Tapping Screw		1	3-10270	7.5 Fuse
4	1	4-12662	Door Assembly		1	3-12096	Toggle Switch
	1	2-13870	Door Weldment		1	3-13152	Decal
	1	3-15213**	Glass, Upper Door		1	3-10668	Ring Terminal
	9'	3-10649*	Rubber, Window 1/8" Offset		13 1/2"	3-10351*	Wire 12 Ga. Red
	1	3-15217**	Glass, Lower Door		1	4-12540	Wire Assembly
	8'	3-10649*	Rubber, Window 1/8" Offset	31	6	3-12057	.25 x .50 Self Tapping Screws
	13 1/2'	3-12138*	Rubber, Clip-On Door Seal	32	5	3-10219	.25 x .75 Bolt
	1	1-23810	Door Handle Outside	33	7	3-10076	.25 Lockwasher
	2	3-16262	#10 x 1 Self Tapping Screws	34	12	3-10084	.25 Flatwasher
	1	3-11128	Inside Latch Right	35	5	3-10063	.25 Nut
	4	3-12057	.25 x .50 Self Tapping Screw	36	4	3-10112	.31 Fiber Washer
5	7 1/2'	3-10611*	Rubber, Clip-On 180° Large	37	4	3-10126	.31 x .75 Bolt
7	1	3-13797	Decal, Caution	38	4	3-12913	.31 Centerlock Nut
8	1	3-13893	Decal, Warning	39	1	3-10723	.62 Hole Plug
9	2	3-11740	Decal, Cozy	40	2	3-10721	.37 Hole Plug
10	2	1-32019	Roof Side Insulation	42	6'	3-10704*	Wire Duct
11	2	3-10176	.37 x 2.50 Bolt	43	1	3-10305	Ring Terminal
12	4	3-10086	.37 Flatwasher	44	2	3-10620	.50 Hole Plug
13	2	3-10073	.37 Nylock Nut	45	2	3-10729	.50 Grommet
14	2	1-20618	Lifting Ear	46	1	3-10247	Wiper Blade
15	as required	3-10649*	Rubber, Window 1/8" Offset	47	1	3-11091	Wiper Arm
16	1	1-32013	Left Lower Side Insulation	48	1	3-11099	Wiper Motor
17	2	3-15214**	Glass, Rear Sides	49	1	3-10105	#10-24 x .75 Trusshead Screw
18	1	3-15218**	Glass, Lower Right	50	1	3-10308	#10-24 Nylock Nut
19	8 1/2'	3-14815*	.25 x 1.0 Seal	51	3 1/2'	3-10345*	Wire 14 Ga. Black
20	1	4-12663	Removeable Back Panel Assembly	52	1	3-11433	Ring Terminal
	1	1-32016	Removeable Back Panel Insulation	53	1	3-10670	Slide on Terminal
21	1	4-12664	Lower Rear Filler Assembly				
	1	1-32018	Lower Rear Filler Insulation				
22	1	3-15215**	Glass, Rear				
23	as required	3-10609*	Rubber Clip-On 90° Small				

* Items must be purchased by the foot and cut to fit.

** Custom Products does not supply replacement glass. It must be purchased from a local glass supplier.