



TORO
4-Post ROPS with Canopy
A-10855
Canopy Only
A-11036

MOUNTING INSTRUCTIONS
With Parts Listings and Drawings
to fit

Toro
REELMASTER 5100-D, 5200-D,
5300-D, 5400-D and 5500-D

Manufactured by:



BOX 70 • LITCHFIELD, MINNESOTA 55355
Phone: (320) 693-3221 Fax: (320) 693-7252
1-800-222-5463

Website: www.800cabline.com

SAFETY INSTRUCTIONS

Read operator's manual. Be thoroughly familiar with the controls, capabilities and proper use of the equipment.

NEVER ALLOW ANY RIDERS.

Thoroughly inspect Roll Bar and Roll Bar Mounting periodically.

Thoroughly inspect Canopy and Canopy Mounting periodically.

Stay alert for hidden hazards and traffic.

Avoid sudden starts, excessive speeds, and sudden stops when operating on hillside, rough ground and most off-the-road operations.

Use extreme care when working close to fences, ditches or on hillsides.

Wait for tractor to STOP before dismounting.

Check clearance carefully before driving under any objects.

Avoid operating sideways on a steep slope whenever possible.

Never exceed factory recommended specifications.

DO NOT weld, cut, drill or modify ROPS in any manner unless instructed by manufacturer.

ROLL BAR SPECIFICATIONS

<u>MODEL</u>	<u>MAXIMUM WEIGHT CAPACITY</u> (Tractor and Implements)
5100-D	3000#
5200-D	3000#
5300-D	3000#
5400-D	3000#
5500-D	3000#

MOUNTING INSTRUCTIONS
for
TORO 4-Post ROPS
to fit
REELMASTER 5100-D, 5200-D, 5300-D, 5400-D & 5500-D

1. Installation of Retention Pins

- A. In the back corners of the seat pan, measure in 2 1/2" from each edge and drill two 15/32" diameter holes through seat pan. Figure #1
- B. Install the retention pins to the seat pan using two 7/16" x 1" Gr. 5 coarse threaded bolts, flat washers and lock washers. Figure #2-A
- C. Install one end of the teather strap and one end of the seat belt to the back sides of seat using two 7/16" x 1" Gr. 5 fine threaded bolts, flat washers and lock washers. Figure #2-B
Note: The end of the teather strap with the 13/16" diameter hole in it goes over the retention pin and is held on with a lynch pin. Figure #2-A

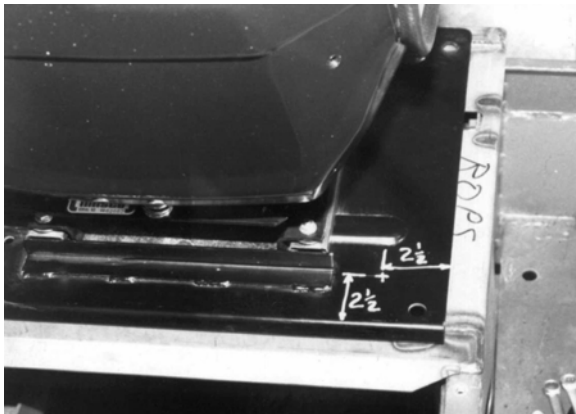


Figure 1

- C. Being sure the top flange of the roll bar mount is flush with the top edge of tractor platform and the roll bar is centered from side to side on the tractor. Match drill three 17/32" diameter holes through the front of the tractor using the pre-punched holes in the roll bar and fasten them together using three 1/2" x 1 1/4" Gr. 5 bolts, flat washers, lock washers and nuts. Figure #4-A
Note: Tighten all bolts to the recommended torque.

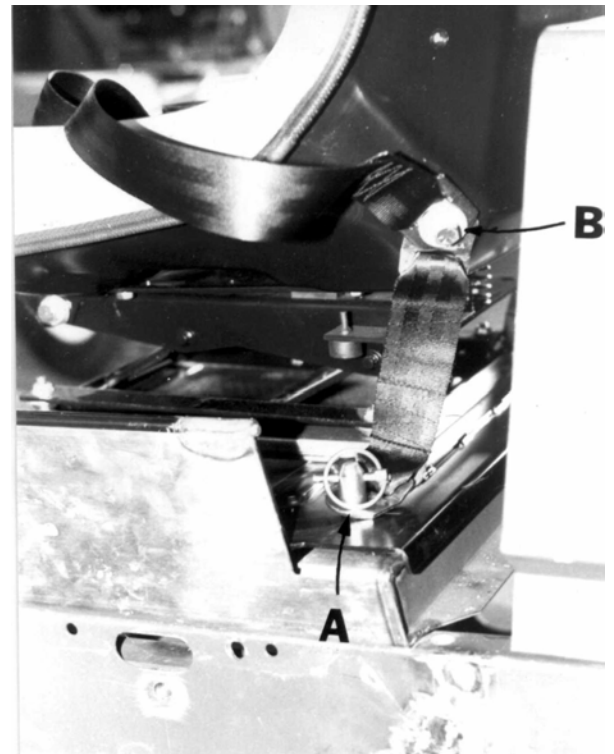


Figure 2

2. Installation of Roll Bar.

- A. Raise hood.
- B. Lower roll bar onto tractor and fasten rear mounts to tractor using six 1/2" x 1 1/4" Gr. 5 bolts, flat washers and lock washers. Figure #3-A
Note: Do Not Tighten.



Figure 3

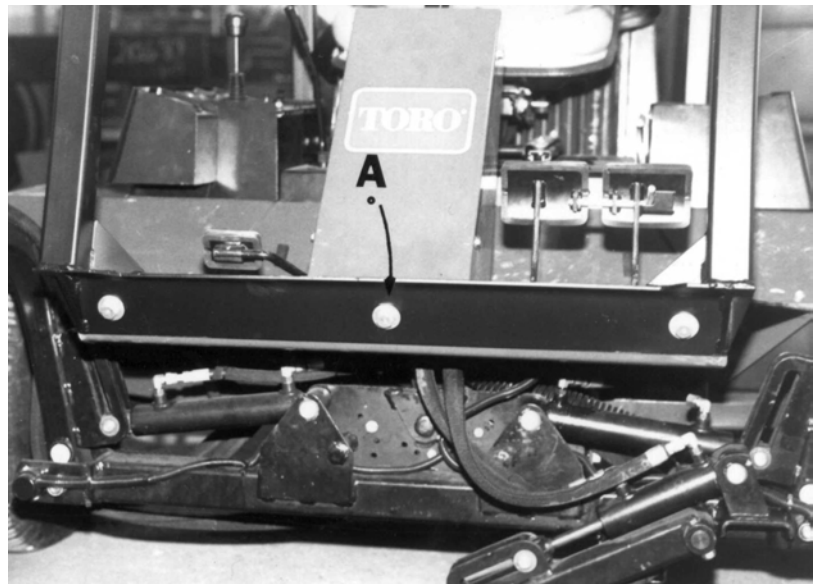


Figure 4

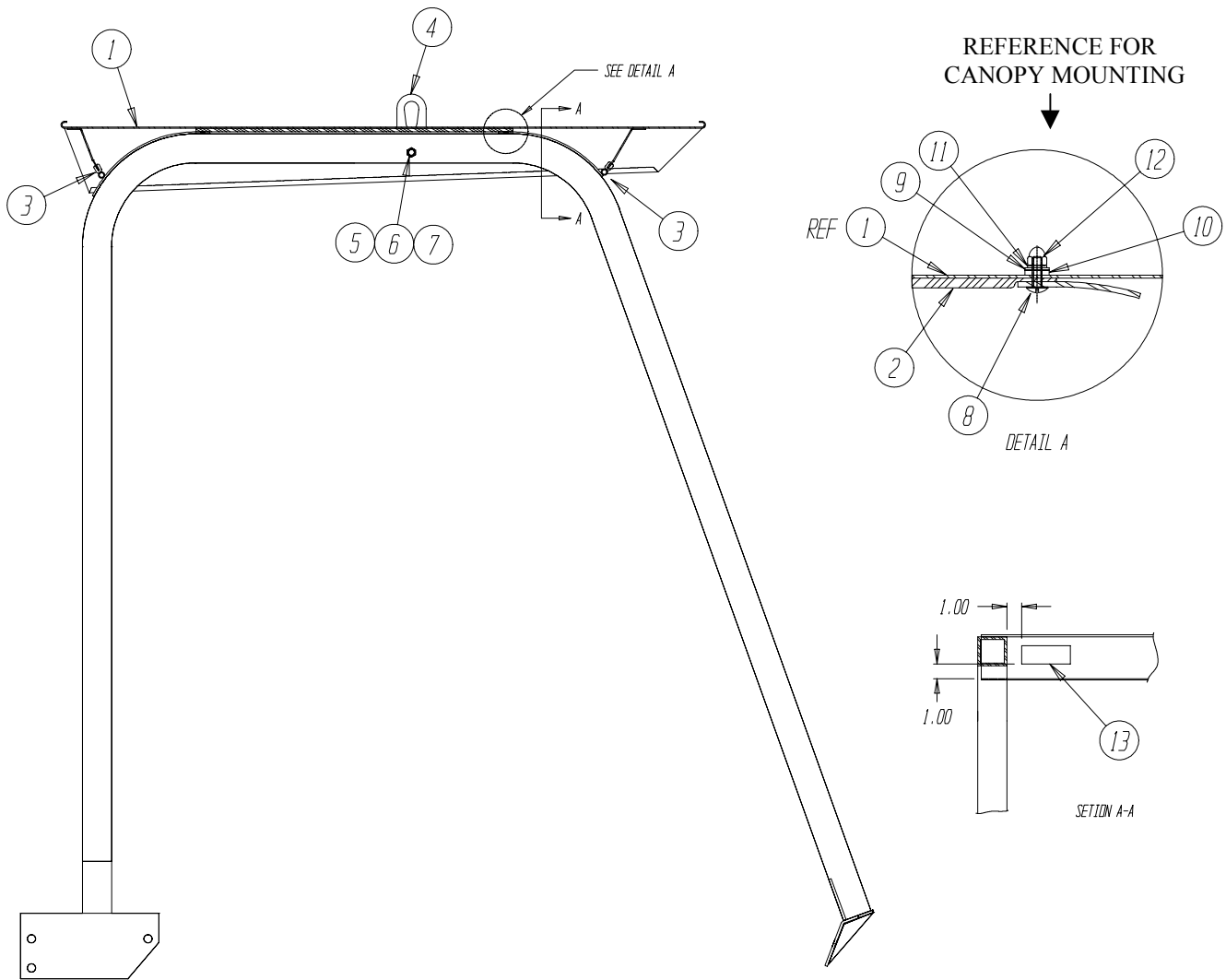
TORQUE TIGHTENING CHART

Use the following charts for all torque applications.

U.S. Bolt Size	Torque Grade 5	
	ft.-lb.	N•m
1/4-20	7-9	9-12
5/16-18	10-15	15-20
3/8-16	20-25	25-35
7/16-14	30-40	40-55
1/2-13	50-60	70-80
9/16-12	70-90	95-120
5/8-11	100-120	135-160
3/4-10	180-220	245-300

Metric Bolt Size	Torque Class 8.8	
	ft.-lb.	N•m
M- 8	17-20	23-27
M-10	34-40	45-55
M-12	55-65	75-90
M-14	91-109	125-145
M-16	145-166	196-225

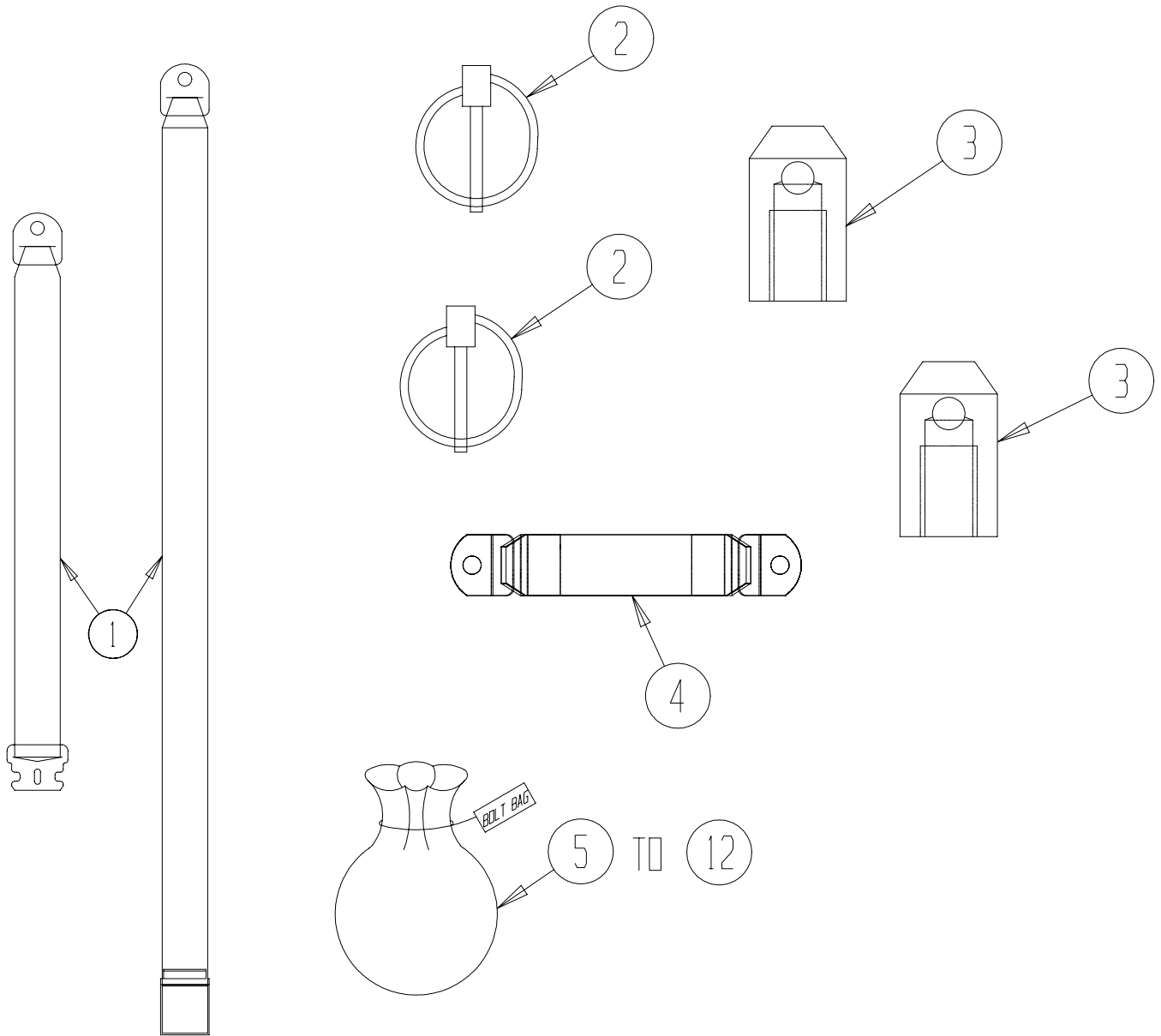
NOTE All torque specifications apply to plated or oiled fasteners. When non-plated or dry fasteners are used, increase recommended torque by 20%. When tightening bolts into aluminum parts, tightening torques are 65% of the specified value in the charts.



REPLACEMENT PARTS

TORO 5100-D, 5200-D, 5300-D, 5400-D and 5500-D

<u>ITEM</u>	<u>QTY</u>	<u>PART NO.</u>	<u>DESCRIPTION</u>
1	1	8-12674	Roof Assembly
2	1	1-32065	Roof Insulation
3	1	3-15068	Clip on Seal Rubber
4	2	1-20618	Lifting Ear
5	2	3-10147	3/8" x 1" Bolts
6	4	3-10086	3/8" Flat Washers
7	2	3-10073	3/8" Nylock Nuts
8	6	3-10260	1/4" x 3/4" Trusshead Screw
9	12	3-10084	1/4" Flat Washers
10	6	3-10645	Rubber Washer
11	6	3-10070	1/4" Nylock Nut
12	6	3-15995	1/4" Acorn Cap
13	1	3-13893	Decal, Warning



REPLACEMENT PARTS
TORO 5100-D, 5200-D, 5300-D, 5400-D and 5500-D

<u>ITEM</u>	<u>QTY</u>	<u>PART NO.</u>	<u>DESCRIPTION</u>
1	1	3-10287	Seat Belt
2	2	3-11635	Lynch Pin
3	2	1-23414	Teather Pin
4	2	1-32077	Teather Strap
5	3	3-10067	1/2" Nut
6	9	3-10406	1/2" x 1 1/4" Bolt
7	2	3-13708	7/16" x 1" Fine Threaded Bolts
8	9	3-10087	1/2" Flat Washers
9	9	3-10079	1/2" Lock Washers
10	4	3-10166	7/16" Flat Washers
11	4	3-10152	7/16" Lock Washers
12	2	3-10045	7/16" x 1" Coarse Threaded Bolts