

COZY CABS

DIRECTIONAL SIGNAL LIGHT KIT OPTION (Side Mounted)

Part No.
4-10359

MOUNTING INSTRUCTIONS With Parts Listing and Drawing



Manufactured by:

CUSTOM PRODUCTS
OF LITCHFIELD, INC.

BOX 718 • LITCHFIELD, MINNESOTA 55355
(320) 693-3221 Fax: (320) 693-7252
1-800-222-5463

05-10217
April 1989

MOUNTING INSTRUCTIONS

for

DIRECTIONAL SIGNAL LIGHT KIT OPTION

(Side Mounted)

4-10359

A. Determine the best location to mount the amber warning lights. Generally they are positioned near the top, rear, left and right sides. See Figures #1, 2, 3 and 4 for mounting examples.

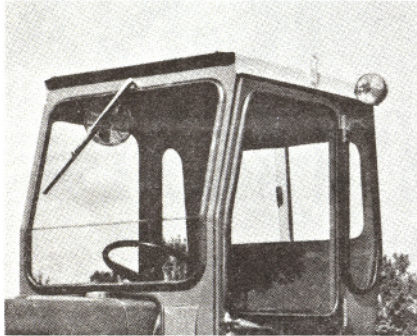


Figure 1



Figure 3

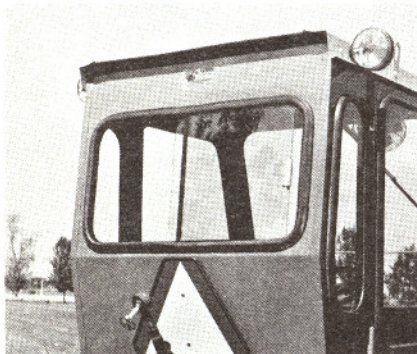


Figure 2



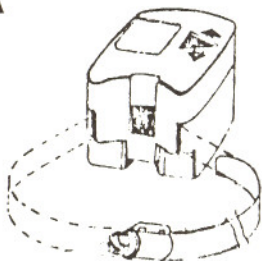
Figure 4

B. In most applications it will be necessary to drill mounting holes. Measure the diameter of the light mounting screw and match drill mounting holes at the location determined in instruction 'A' above.

C. Using a screw driver, unscrew clamp band so that both ends are free. See Diagram A.

D. Reference Diagram A and open mounting strap. Form approximately one inch on the lead edge of the strap to 3/4" radius. (This will help to guide the strap thru the switch housing.)

DIAGRAM A



E. Feed the radiused end of the strap into the opening on the back of the switch housing (as shown in Diagram A) and continue to push thru. The 3/4" radius on the strap will follow the contour of the housing and come out on the opposite side.

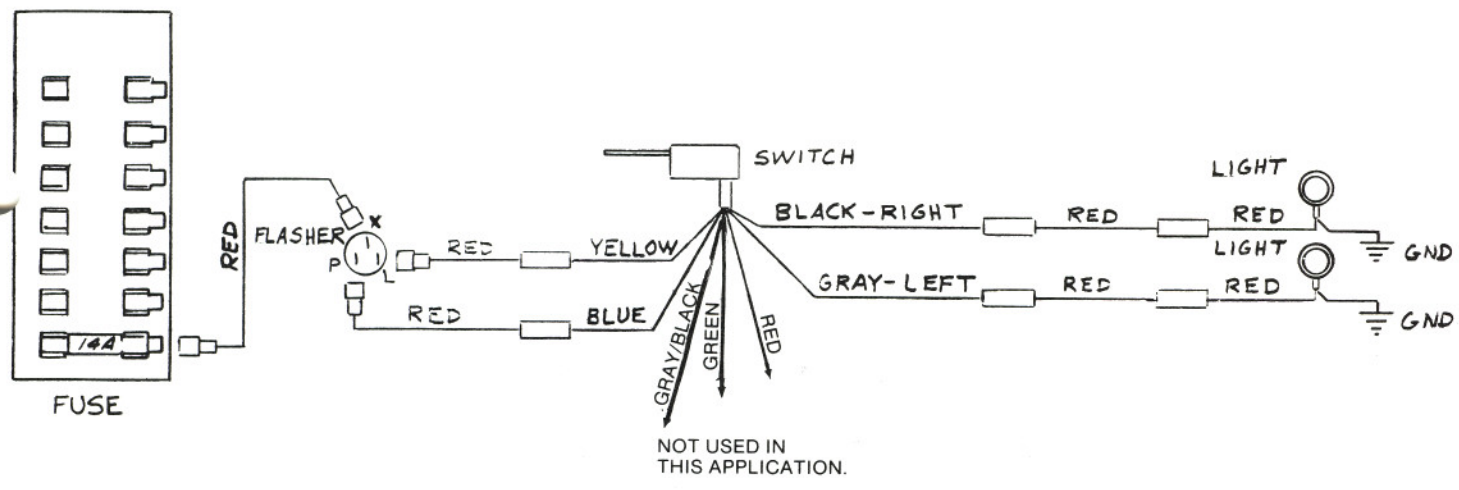
F. Mount switch to the steering post. (Be certain that this area is free of dirt and paint in order to obtain a good electrical ground connection.) Insert strap end into adjusting housing and turn screw clockwise to tighten strap.

G. Disconnect the flasher can during wiring. Reconnect the flasher can after the wiring has been completed and checked.

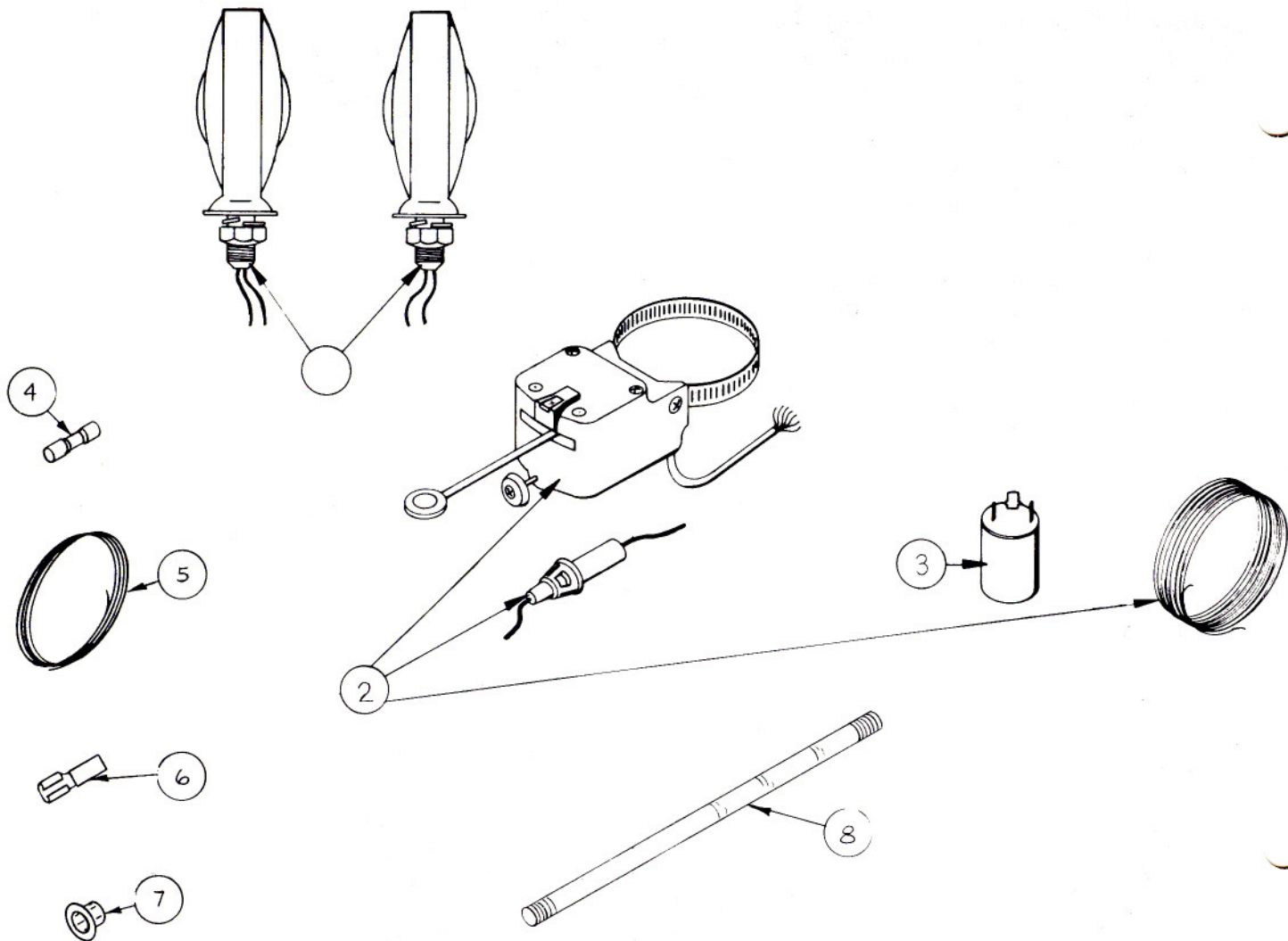
H. Connect wires from switch harness as shown on the wiring diagram.

WARNING: CONNECT THE GRAY, BLACK AND BLUE WIRES BEFORE CONNECTING THE YELLOW WIRE TO AVOID DAMAGE TO THE SWITCH FROM ACCIDENTAL SHORTING. In this application the green, gray/black, and red wires from the switch harness are NOT used and should be capped and covered with electrical tape to prevent accidental shorting.

- I. Service — To replace pilot bulb in switch:
1. Unscrew the two screws on top of switch case.
 2. Remove top cover by guiding bottom half down and away from top cover.
 3. Snap out bulb bracket by first lifting off triangle plate, then move turn signal arm up as for right turn exposing bulb bracket.
 4. Replace bulb.
- NOTE:** For 6 volt system use bulb #147.
 For 12 volt system use bulb #194.
 For 24 volt system use bulb #464.
5. Reassemble in reverse order.
- NOTE:** Be sure that the small marks on triangle plate and on gear sector of turn signal arm are aligned with one another.



WIRING DIAGRAM



REPLACEMENT PARTS
for
DIRECTIONAL SIGNAL LIGHT KIT OPTION
4-10359

Item	Qty.	Part No.	Description
1	2	3-11308	Amber and Red Warning Light
2	1	3-11307	Warning/Flasher Switch
3	1	3-11259	Flasher Can
4	6	3-10672	Insulated Butt Splice (14-16 Ga.)
5*	40'	3-10364	14 Ga. MTW Red Wire
6	4	3-10670	1/4" Solderless Insulated Female Sliding Terminal (14-16 Ga.)
7	2	3-10729	1/2" Grommet
8*	2'6"	3-10704	Black Flexible Loom Wire Duct
Not Shown	1	05-10217	Instruction/Parts Manual

* This item must be ordered by the foot and cut to fit.