

Cab Serial Number CP22-58-XXXXX

COZY CABS

MOUNTING INSTRUCTIONS



With Parts Listing
and Drawings for
JOHN DEERE

316 (Twin Cylinder) - 318 - 420 - 430
A-10362 A-10362 A-10360 A-10467



**CUSTOM PRODUCTS
OF LITCHFIELD, INC.**
Box 718 Litchfield, Minnesota 55355
Phone (612) 693-3221

 A Reinke Company

05-10117

MOUNTING INSTRUCTIONS

316 (Twin Cylinder) - 318 - 420 - 430

R.O.P.S. Cab

1. Preparation of tractor.

- Block up rear of tractor and remove both tires.
- Loosen seat deck bolts.
- Slide seat to forward position.

2. Installation of rear mounts.

- Use template sent with mounting kit for locating mount holes in side frame of tractor. Line up $13/16$ " diameter hole in template over hole in tractor frame. Top edge of template should be flush with top edge of tractor frame. Fig. 1 and Fig. 2. Then center punch four holes

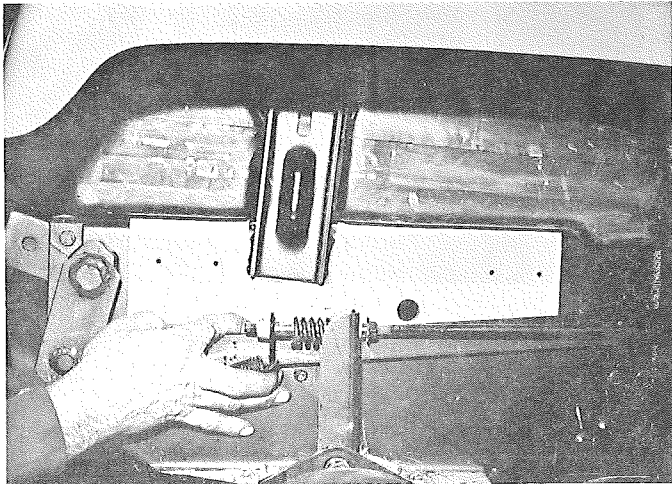


Figure 1

in the template and drill four $17/32$ " diameter holes through frame. Use same procedure for opposite side. Fig. 1 shows the 420 template which has a blank size of $3\frac{3}{4}$ " x $15\frac{1}{4}$ " and the 318 template is 5" x $15\frac{1}{4}$ ". Fig. 2.

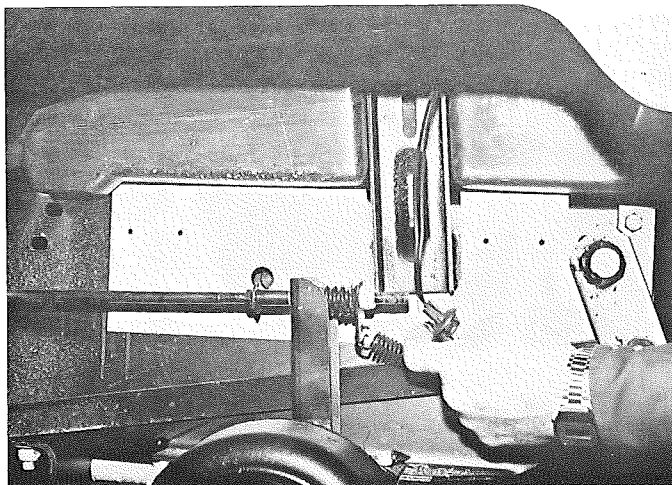


Figure 2

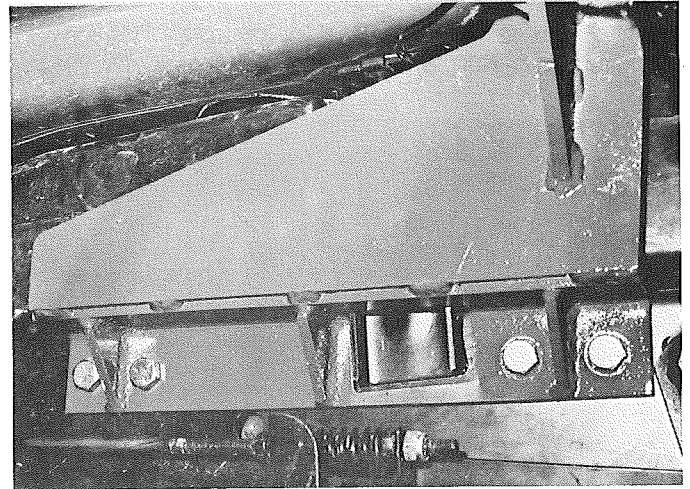


Figure 3

- Install rear mounts to tractor using $\frac{1}{2}$ " x $1\frac{1}{4}$ " Grade 5 bolts, lockwashers and nuts. Fig. 3 shows 420 mount and Fig. 4 shows 318 mount. Tighten mounts up to side of tractor frame. Before drilling holes through seat deck be sure that the mounts are at $23\frac{1}{2}$ " center to center of holes in bottom mount. Fig. 5. Use holes in bottom mount pad as template and drill eight $17/32$ " diameter holes through seat deck. Fig. 4-A.

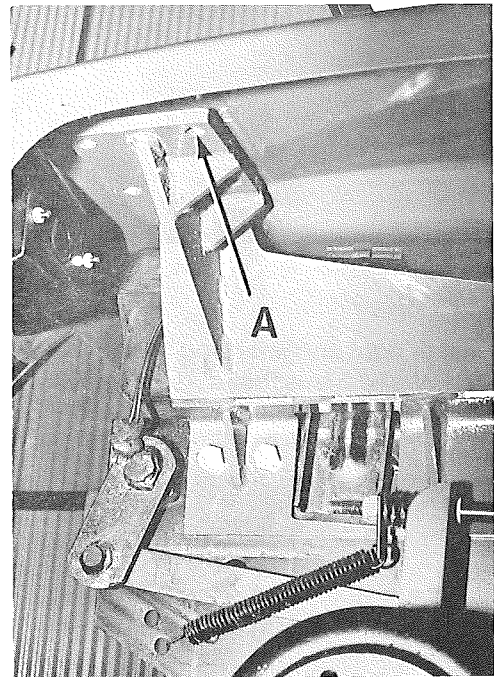


Figure 4

3. Installation of cab, filler panels and floor mat.

- Remove windshield from cab.
- Place brakes on park.
- Lower cab onto tractor. When cab rear mount holes are lined up with holes in seat deck fasten with eight $\frac{1}{2}$ " x $1\frac{1}{2}$ " Grade 5 bolts, flatwashers, lockwashers and nuts. **Note:** Install

seat belt ends to front inside holes as shown in Fig. 6-A. **(Do Not Tighten These Bolts Yet.)**



Figure 5

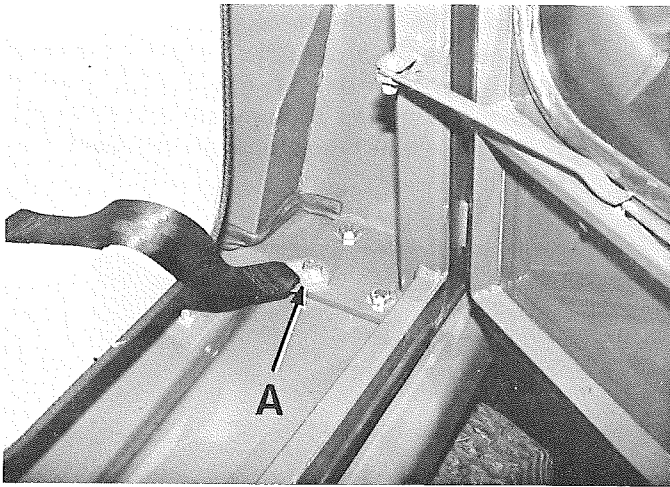


Figure 6

D. Install right and left hood filler panels using six $\frac{1}{4}$ " x $\frac{3}{4}$ " trusshead screws, flatwashers, lockwashers and nuts. Fig. 7 and Fig. 8.

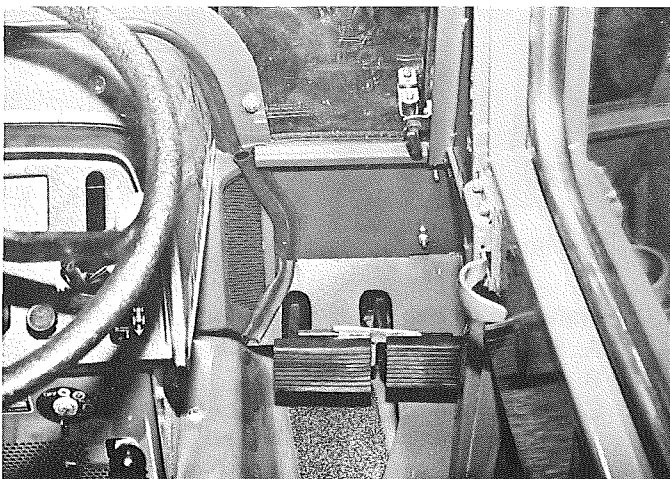


Figure 7

E. Being sure that the cab is centered on tractor, all seal rubbers are properly adjusted and outside width of cab at point B, Fig. 9, is $34\frac{3}{8}$ " , drill four $\frac{13}{32}$ " diameter holes through holes in cab mount into seat deck and fasten with four $\frac{3}{8}$ " x 1" bolts, lockwashers and nuts. Fig. 9-A. **(Tighten All Bolts.)**

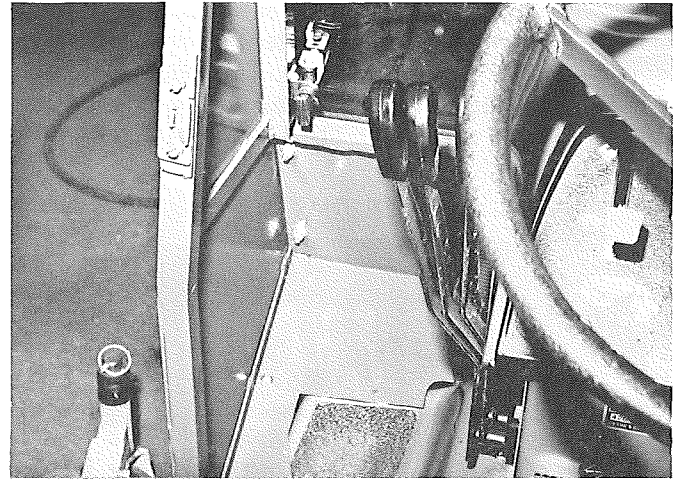


Figure 8

F. Install floor mats in cab. This floor mat is designed to fit reasonably close but due to slight model changes or added accessories different from the machine we designed on, you may find it necessary to trim the mat to fit your requirements.

G. Reinstall windshield onto cab. Some adjustment may be needed up or down for a good fit on hood. This can be accomplished by either using the slots in the hinges bolted to windshield or the actual adjusting of the hinge welded to the cab.

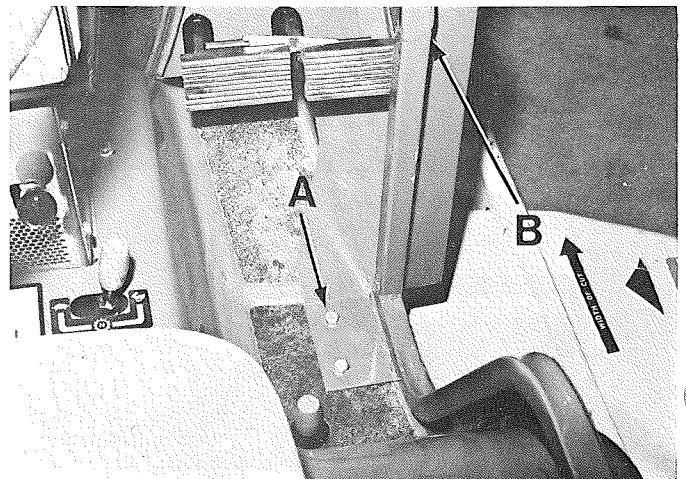
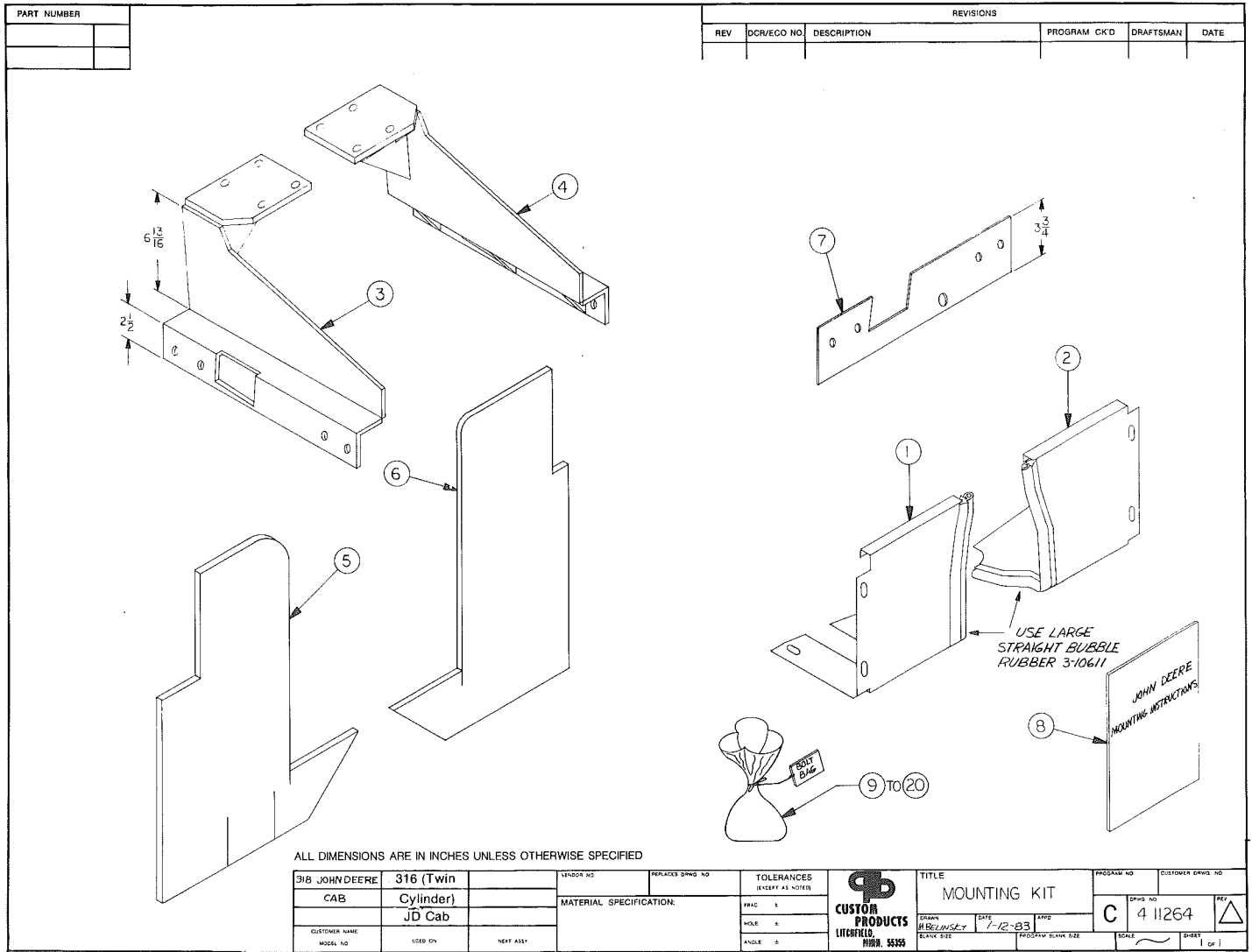
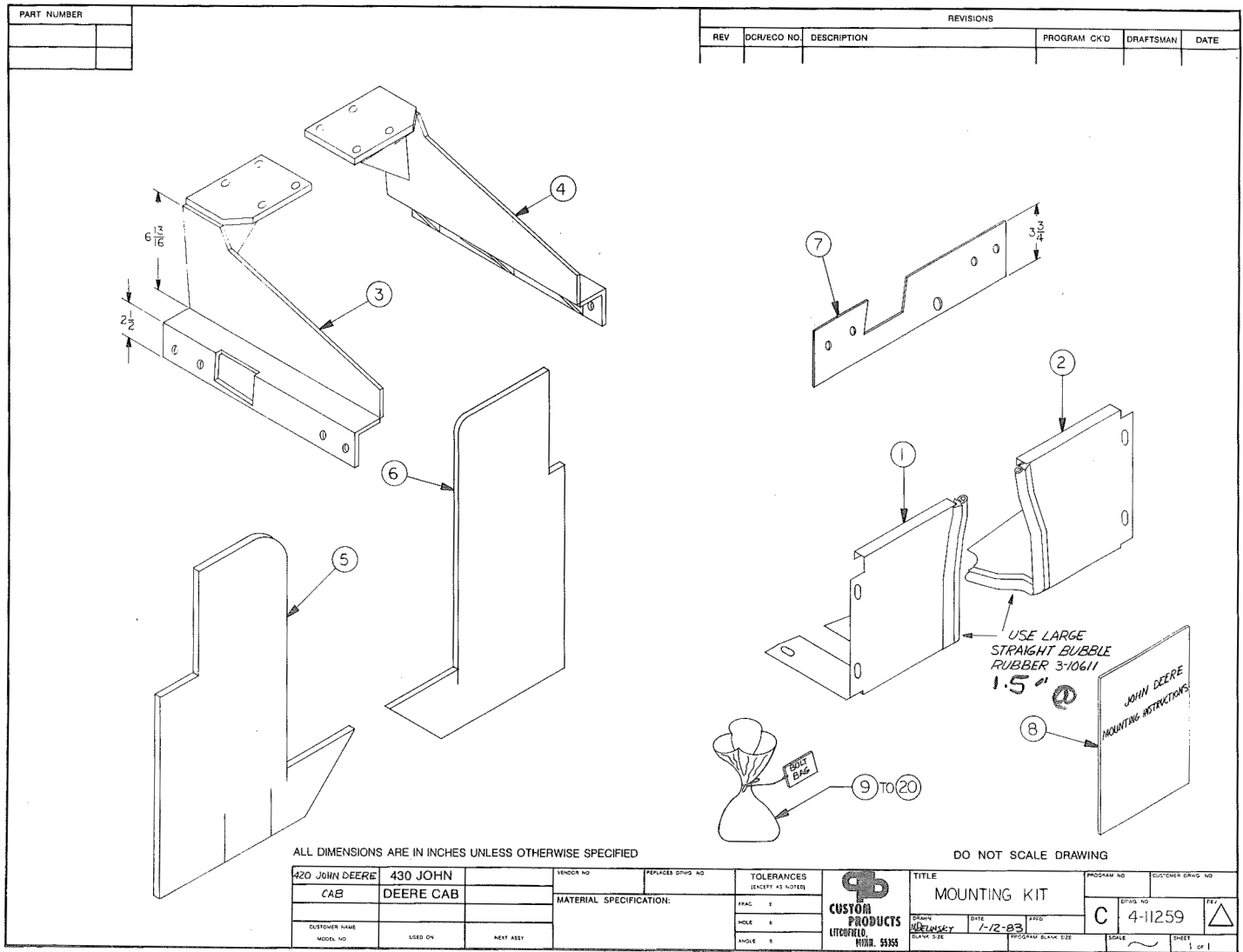


Figure 9



Mounting Kit John Deere 316 (Twin Cylinder) - 318 4-11264

Item	Qty.	Part No.	Description
1	1	4-11261	Bolt-on Filler Panel Assembly, Right
2	1	4-11262	Bolt-on Filler Panel Assembly, Left
3	1	2-12154	Mount Weldment, Left
4	1	2-12153	Mount Weldment, Right
5	1	1-23659	Floor Mat, Right
6	1	1-23660	Floor Mat, Left
7	1	1-23655	Mounting Template
8	1	05-10117	Mounting Instruction Booklet, 318 & 420 John Deere Cab
9	6	3-10260	Machine Screw, .250 NC x .750 Truss Head, Slotted
10	6	3-10084	Flatwasher, .250
11	6	3-10076	Lockwasher, .250
12	6	3-10063	Hex Nut, .250
13	4	3-10147	Hex Cap Screw, .375 x 1.000, Grade 5
14	4	3-10078	Lockwasher, .375
15	4	3-10065	Hex Nut, .375
16	8	3-10046	Hex Cap Screw, .500 x 1.500, Grade 5
17	8	3-10087	Flatwasher, .500
18	16	3-10079	Lockwasher, .500
19	16	3-10067	Hex Nut, .500
20	8	3-10406	Hex Cap Screw, .500 x 1.250, Grade 5



Mounting Kit John Deere 420-430 4-11259

Item	Qty.	Part No.	Description
1	1	4-11253	Bolt-on Filler Panel Assembly, Right
2	1	4-11254	Bolt-on Filler Panel, Left
3	1	2-12146	Mount Weldment, Left
4	1	2-12145	Mount Weldment, Right
5	1	1-23659	Floor Mat, Right
6	1	1-23660	Floor Mat, Left
7	1	1-23645	Mounting Template
8	1	05-10117	Mounting Instruction Booklet 318 & 420 John Deere Cab
9	6	3-10260	Machine Screw, .250 x .750 Truss Head, Slotted
10	6	3-10084	Flatwasher, .250
11	6	3-10076	Lockwasher, .250
12	6	3-10063	Hex Nut, .250
13	4	3-10147	Hex Cap Screw, .375 x 1.000, Grade 5
14	4	3-10078	Lockwasher, .375
15	4	3-10065	Hex Nut, .375
16	8	3-10046	Hex Cap Screw, .500 x 1.500, Grade 5
17	8	3-10087	Flatwasher, .500
18	16	3-10079	Lockwasher, .500
19	16	3-10067	Hex Nut, .500
20	8	3-10406	Hex Cap Screw, .500 x 1.250, Grade 5
	1	3-10287	Seat Belt

John Deere
316 (Twin Cylinder), 318, 420, 430
Replacement Parts

Qty.	Part No.	Description	Qty.	Part No.	Description
1	1-23664	Insulation, Roof	2	3-12138	Door Seal Rubber 154' each
1	1-23667	Insulation, Roof Front	4	3-11797	Phillips Oval Head Screw, Outside Handle
1	1-23668	Insulation, Roof Side, Left	2	2-11589	Hinge Weld, Windshield & Back Window
1	1-23669	Insulation, Roof Side, Right	2	2-12152	Hinge Weld, Windshield & Back Window
2	3-12870	Handle - Locking	2	3-11318	Back Window Knob
1	3-11127	Door Latch, Right	2	1-10263	Back Window Slide
1	3-11128	Door Latch, Left	2	1-10877	Back Window Holder
2	2-10124	Door Holder Weld	13	1-22030	Window Spacer Bushing
2	1-11357	Door Catch	1	1-23627	Roof
2	1-21398	Door Spring	1	3-10287	Seat Belt
1	2-12143	Door Weldment-Right	2	3-11740	Decal Cozy Cab
1	2-12144	Door Weldment-Left	1	3-10783	Fuse Block
1	4-11257	Door Assembly-Right	A.R.	3-10988	Paint, John Deere Yellow
1	4-11258	Door Assembly-Left	A.R.	3-11006	Paint, John Deere Green
1	4-11255	Back Window Assembly	A.R.	3-10637	Adhesive
1	4-11253	Bolt-on Filler Panel Assembly-Right	1	3-12096	Wiper Switch
1	4-11254	Bolt-on Filler Panel Assembly-Left			
1	4-11256	Windshield Assembly (420 JD)			
1	4-11263	Windshield Assembly (318 JD, 316 JD)			
1	4-11613	Windshield Assembly (430 JD)			
1	3-11099	Wiper Motor			
1	3-11091	Wiper Arm 15" TO 19" aDJ.			
1	3-15081	Wiper Blade 14"			
1	4-10850-01	Accessory Mount Panel Assembly			
1	1-23653	Hood Filler (318 JD, 316 JD)			
1	1-25502	Hood Filler (420 JD, 430 JD)			
1	3-12898	Glass, Windshield			
1	3-12899	Glass, Back			
2	3-12900	Glass, Door			
1	1-23659	Floor Mat, Right			
1	1-23660	Floor Mat, Left			
1	3-11280	Rubber Swing-out Window Windshield Top & Sides (11') Rear Window (9')			
1	3-10649	Off-set Window Rubber 108" each Door			
3'	3-10610	Lower Windshield Seal, Bottom 3'			
8'	3-10610	Cab to Fender Deck Seal, Right and Left Side 8'			
4'	3-10610	Lower Back Seal to Deck 4'			

*Cabs with serial number CP22-58-266 & up to have new style windshield. 420 John Deere to have filler panel sent with windshield on replacement parts orders CP22-58-265 & down.